



Spotted knapweed



Autumn olive



European swamp thistle

### Be Aware of these Common Invasive Plants

Many people are concerned about invasive and exotic species. Shown here are common species you might see in our service area. For more detailed information please ask us for a copy of a free Invasive Plant Field Guide (See Offfield Work Bee next page).

#### Garlic mustard (*Alliaria petiolata*)

In bloom, this invasive plant has white, 4-petaled flowers, and can dominate ground cover of forests. This invasive growing type typically prohibits all other species growth by destroying necessary fungi for woody plants to regenerate. Often found along forest edges, pathways, and floodplains. LTC has focused on removal of this invasive at the Meadowgate Preserve in Emmet County in recent years.

#### Autumn olive (*Elaeagnus umbellata*)

Native to Asia, this shrub easily out-competes native plants by invading disturbed areas and increasing soil nitrogen levels. It is found often in sunny, open areas, and is hard to remove once established because of its large size and tendency to stump sprout. LTC, with the help of many volunteer hands, has tackled this invasive with much success at the Chaboiganing Preserve in Cheboygan County.

#### Spotted knapweed (*Centaurea stoebe*)

Common in well-drained, poor soils, this European native plant quickly becomes invasive in disturbed sites here in the U.S. It is allelopathic, making it almost impossible for anything native to grow around each plant. This characteristic can be dangerous to humans also, so if you are intent on removing it, wear gloves and long sleeves. We have been successful at keeping European

knapweed from over-taking pristine Lake Superior shoreline at Vermilion Point Preserve in Chippewa County through an annual work bee every July (look for details in the LTC summer newsletter).

#### European swamp thistle (*Cirsium palustre*)

It can be tricky to discern between the native and non-native, invasive swamp thistle. Invasive or European swamp thistle has spiny stems, unlike the smooth stems of native swamp thistle. European swamp thistle is common in moist, sunny areas with acidic soils such as roadside ditches, swamps, and other types of wetlands. We have spent a small amount of time controlling European swamp thistle at the Kalman Preserve in Emmet County.

#### Eurasian phragmites (*Phragmites australis australis*)

This perennial grass likes nutrient-rich soils and is often found in wetlands, ditches, and shorelines. Phragmites spreads quickly by seed and aggressive vertical and horizontal rhizomes. It grows up to 13' tall in dense stands, and has slight differences from the native Michigan species, mostly in the stem characteristics, growth density, and overall height. Some of our preserves have been professionally treated for invasive phragmites control on Beaver Island and a grant has been received by the Conservation Resource Alliance to continue large-scale control efforts across the entire island.



Garlic mustard



Phragmites

## 2014 Stewardship Volunteer Work Days

Help us spread the word! Join us for the whole day or a few hours, as your schedule permits. To sign up, or for more information, please call our office at 231.347.0991. You can also find more details and online registration at [www.landtrust.org](http://www.landtrust.org)

#### Offfield Preserve Plant & Habitat Survey

Emmet County - Saturday May 17, 11-3

#### Rogers Family Homestead Preserve Clean-Up

Charlevoix County - Saturday May 24, 9-4

#### Trail Building at Reed's Pigeon River Preserve

Cheboygan County - Saturday May 31, 9-3

#### Boardwalk Building at Hailand & Helstrom Preserves

Emmet County - Saturday June 21, 9-3

#### Vermilion Knapweed Pull

Chippewa County - Mid July, Date to be determined, 9-3

## 2014 Preserve Priority Projects

In addition to our scheduled work bees, the following list highlights nature preserves where we hope to conduct major projects this upcoming season. If you are interested in working specifically at one of these preserves please contact Cacia at 231.344.1002 or [cacia@landtrust.org](mailto:cacia@landtrust.org).

#### Charlevoix County

Darnton  
The Hill  
Wisser-Saworski

#### Emmet County

Watson  
Hailand/Helstrom  
Fochtman

#### Cheboygan County

Andreae  
Reed's Pigeon River  
Chippewa County  
Foster-Hartley Lake

#### Mackinac County

Aldo Leopold  
Birge

## Explaining the Roles of Preserve Monitors and Trail Stewards

For many of you, your volunteer duties are well-engraved in your mind, but we have over 30 new volunteers this year, and a few of you have requested clarification between Trail Steward and Preserve Monitor duties. See the checklist below to jog your memory before heading out to do your spring monitoring or trail clearing. You can find more detailed resources on our website, [www.landtrust.org](http://www.landtrust.org), under the Volunteer tab.

#### Preserve Monitor Checklist

Walk boundaries:

- Boundary encroachment
- Trash dumping
- Motorized vehicle trespass

Make note of invasive plants (see page 2)

Condition of signs

Condition of Structures- bridges, boardwalks, benches, interpretive signs

Report illegal activity immediately

Report in spring and fall

Track your hours

#### Trail Steward Checklist

Inspect trails:

- After winter/rain/wind storms
- Once a season
- Ask LTC to clear trees with chainsaw if necessary
- Assess condition of blazes or metal trail markers on trees
- Structures along trails- bridges, boardwalks, benches, interpretive signs

Clear trails:

- Maintain 2-track trails 8' wide x 8' high
- Maintain single track trails 4' wide x 8' high

Report once annually in December

Track your hours and include with your December report, or quarterly by email

## Stew Crew 2014



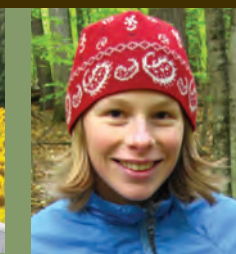
Charles Dawley  
Preserve/GIS  
Specialist



Caitlin Donnelly  
Stewardship & Land  
Protection Specialist



Kieran Fleming  
Director of  
Stewardship



Cacia Lesh  
Volunteer  
Coordinator



Mike Lynch  
Preserve Specialist



Derek Shiels  
Conservation  
Easement Specialist



## With gratitude to our volunteers (as of April, 2014)

### Current Preserve Monitors and Trail Stewards

Daniel and Carol Adams • Mary Stewart Adams • Denise Simon and Hugh Melling • Steve Anderson • Joey Arbaugh • Les Arnold • Gary Barfknecht • Ray Baron • Michael Bartlett • John Beach • Gretchen Bearce • Carolyn Belknap • Jim and Sandy Birdsall • Jason Brabbs • Ruth Brede • Mike and Bonnie Brunett • Michael Buttigieg • Joseph and Bridget Cadreau • Dave and Jamie Caroffino • Judi and Pete Chimner • Fred and Mary Clinton • Maureen Conklin • George Covington • Tom and Karen Criste • Mike and Joanne Cromley • David Cummings • Hope Cutshall and Family • Gary and Marilyn Damstra • Jack Dean and Family • Gary and Tammy Dettmann • Bill Dohm • Gretchen Dorian • Mike Dow • Dan Dueweke • Lorraine Edwards and Family • Scot Egleston • Doug and Sherry Engler and Family • Chuck and Bonnie Farrugia • Jeff Fox and Michelle Suworoff • Rafael Garcia • Rich Gedert • Sherry Gerlach • Zach Ginop • Lois Graham • Maryln Graham • John Griffin • Ed and Elaine Harris • Judy Harvey • Roger Heimbuch • Bill and Betty Henne • Gary High • John and Barb Hoffman • Cindy Holmes • Greta Jankoviak • Cindy and Kelvin Johncheck • Mary Johnson • Kelly Joyce • Michael Karr • Ken Kelsey • Joe and Karen Kimmell • Karen Klomprens • Chris and Lynsa Knickerbocker and Family • Roger Knutson • Sherry Kovach • Paul Krecke • Barb Kurtz • Jacque LaFreniere • Doug Fuller • Dale and Gloria Landes • Darrell Lawson • Don LeClair • Tom Lehman • Ric and Lisa Loyd • Mike Lynch • Sarah MacLean • Mark Maier • Larry Mann • Ed and Jane Marin • C.T. Martin • Larry Marvin • John Maximiuk • Bill Mayhew • Vaughn and Harriet McGraw • Charley and Norma McKinley • Kitty McNamara and Mike Green • Carl and Diane Meyer • Tim DeWick and Bonnie Mikkelsen • Al and Jean Moberly • Chris Scherwinski and Ashley Moerke • Lisa Morris • Jay and Shawn Neff and Family • Steve and Ruth Nelle • Ted and Pam Newcomb • Ron Oesterreicher • Jim and Anne Oleszek • Chris Oliver • Marta Olson • Gary Osterbeck • Dale Petty and Jeannine Palms • Jim and Frances Paris • Rich Pattison • Glen Schmiede and Lynne Petersen • Todd Petersen • Jane Duffield and Paul Pioszak • Deb and Peter Plastrik • Dick and Vera Post • Melissa and Jon Purdy • Dan and Jan Reelitz • Margie Reh • Andy Reyburn • John Riggs • Gerald and Patricia • Rintamaki • Barb Rivard • Frank Rostar • Susan Rutledge • Bill and Deb Rutter • John and Suzette Sanborn • Jim Schroeder • Jim Scollin • Dick and Julie Scott • Amanda Seidel • Marilyn and Stan Smith • Scott Smith and Family • Frank Solle • Kenyon and Sally Stebbins • David Stepanovich • Karen Stewart • Ed and Diane Strzelinski • Doug Tayler • Stan Todd • Miles Trumble • Mary Jane Ulrich • Jean Van Dam • John and Susan Vrondran • Paula Welmers and Fred Mulhauser • Phil Wesorick • Lois Williams • Neil Wilson • Pat and Paul Wilson • Ron Winchester • Todd and Jen Winnell • Ken Winter • Trish and Phil Woollcott

### 2013 Community Group and Business Volunteers:

Bluegreen Corporation • Crossfit Petoskey • CMU Alternative Spring Breaks • Circuit Controls Corporation • Consumer's Energy • Greenheart Group • Lakeview Academy • Maple Grove Martial Arts • Narcotics Anonymous • Training Leaders for Christ Camp (Emmanuel Episcopal Church)

### 2013/14 Kestrel Nest Box Volunteer Monitors

Brook Barney • Jim and Wendy Bean (Project Coordinators) • Jason Brabbs • Shirley Burns • Mike and Joanne Cromley • Gretchen Dorian • Lynn Walters Frazee • Maryln Graham • Brad and Pam Grassmick • Don Grimmer • Jim and Sarah Haveman • Bill and Betty Henne • Mary Johnson • Joe and Karen Kimmell • Barb Kurtz • Darrell Lawson • Vickie Lyon • Sarah MacLean • Mark Maier • Jay and Shawn Neff and Family • Ron Oesterreicher • Gary Osterbeck • Darryl Parish • Tony and Juli Ryner • Kenyon and Sally Stebbins • Karen Stewart • Ed and Diane Strzelinski • Kelly Trierweiler • Nancy Waldron • Jennifer Eis and Don Ward • Matthew Weeber and Sarah Mann



Nature Preserves  
by County  
as of April 15, 2014

County	# Preserves	Acres
Charlevoix	49	2,657
Cheboygan	27	2,042
Chippewa & Luce	19	2,913
Emmet	73	4,154
Mackinaw	14	3,199
<b>TOTAL</b>	<b>182</b>	<b>14,965</b>



### VOLUNTEER SPOTLIGHT Glen Matthews

*Glen is a highly skilled volunteer who contributes to wildlife and habitat studies on nature preserves, helps write management plans, and tackles invasive species.*

Many people love their work, but most spend their free time in another way. For Glen Matthews, this was not the case. Glen felt lucky enough to work in a field that encompassed his love for the outdoors, people, and working with the community. When he retired in 2008 from his position as Wildlife Supervisor at the Gaylord office of the Michigan DNR, Glen sought out the same type of volunteer work that he had done early in his career – exploring the wilds of northern Michigan. And LTC was lucky enough to be the organization of his choice.

Glen brings a strong work ethic and a methodical, patient, attitude to his volunteerism that he learned early in his childhood on the family farm in West Branch. Family trips to the Upper Peninsula introduced him to a wilder side of Michigan where he could roam the woods and trails, cultivating a deep love of the outdoors beyond his experiences on the farm. This love led to a Bachelor of Science degree in Wildlife Biology from Michigan State University, where he also met his wife, Diane. They were married and had two sons with whom he shared his love of the rivers and lands of northern Michigan. After working for three DNR divisions, including three years with Forest Management in the UP, Glen transferred to Wildlife Division at Indian River in 1977. In this role, he studied the habitats of Cheboygan and Emmet counties for 12 years. His job as wildlife supervisor at Gaylord for the next 18 years allowed him to be involved in diverse wildlife and habitat issues in a 14 county district of northeast Michigan.

With his family based in Indian River, Glen's job allowed him to explore nearly 2 million acres of public land across 14 counties. Learning from others in the field, Glen worked with foresters to

establish best management practices on state land, and address private land owner concerns regarding wildlife management and habitat protection. Living his passions, he was in the field year-round - on snowshoes and off trails - going through a process of discovery, both inside and out. On a personal level Glen felt very fulfilled by this work that highlighted the special characteristics that make northern Michigan home to a diverse array of wildlife –black bear, elk, and other iconic species such as the Kirtland's warbler.

Thirty years with the DNR was not enough for Glen; he still felt the pull to explore even more wild lands of the north. So upon retirement, he found his outlet with LTC. Glen has found the corridor of LTC's Pigeon River preserves - such as the Andreae and Banwell preserves - to be extraordinary examples of protecting contiguous habitats.

When working with LTC on a wildlife study or management plan, Glen helps draw a picture of the existing landscape so its natural qualities can be best managed. He has helped with habitat studies and has contributed to many management plans preserves such as Goodhart Farms, Reed's Pigeon River, Offield Family, and The Hill. What Glen enjoys about his volunteer position is that he has eased into this very suitable role, making his own schedule, and helping to achieve organization goals without feeling overwhelmed or straying from LTC's mission. He generously shares and applies his knowledge with LTC, and at the same time finds fulfillment in contributing to conservation.

This symbiotic relationship, where both our organization and the volunteer feel equally fulfilled by the other, is one LTC strives to achieve. As Glen puts it, "land trust organizations like LTC play an important role. From working with the DNR to accomplishing conservation on the community level, LTC can work on a large or small scale as necessary and act more quickly than local or state government departments." Through collaboration with LTC, others in the community feel empowered to manage their own private land with conservation goals in mind.

Glen is one community member threading his way through our landscape with public benefit and conservation in mind. Thank you, Glen, for your heart and steady efforts to engage with the community, LTC, and the landscape we love and call home.

### Volunteer Appreciation Luncheon

Saturday, June 28, 2014

Save the Date! This year's event will be held at the Indian River Golf Club. Watch your mail for a formal invite in May!