



Eric Begin



Kevin Cole

## The Inland Waterway Nature Preserve

CONSERVANCY AND LAKE ASSOCIATION PARTNER AGAIN

**Imagine** you are on a boat in Emmet County's Crooked Lake, moving north along the Inland Waterway. You are heading toward the Crooked River and ahead of you are the Alanson locks which will transport you safely to the Crooked River. To your left, just before the locks, are beautiful, undeveloped wetlands. It is a place where the call of kingfishers is common, as is the water trail of a muskrat or otter that just passed through.

This spring, Little Traverse Conservancy purchased 2,000 feet of this frontage along with 23 acres of marsh and forested wetlands to create the Inland Waterway Preserve. According to wildlife ecologist Burt Ebbers, "I cannot think of any other waterfront parcel in the upper Crooked River watershed more deserving of preservation than this property, both in terms of helping maintain water quality and providing quality habitat for native plants and animals."



Ebbers noted that the new preserve includes a well-defined Northern Fen community, a rarity in this region.

"Protecting this much shoreline near the top of the waterway was a high priority for the Conservancy," said Tom Bailey, executive director for the Conservancy.

Funding for the purchase came primarily from the Taylor Foundation, and was greatly enhanced with a \$15,000 contribution from the Pickerel-Crooked Lake Association (PCLA), a dynamic group that has worked in partnership with the Conservancy throughout the years. Most notably, this group served a significant role in protecting the Oden Island Nature Preserve and the Black Hole Nature Preserve.

"The PCLA is made up of members with a wide variety of backgrounds with the common interest of protecting the environmental well being of our lakes," said Ray McMullen, president of PCLA. "Unscientifically

*continued page 4*



Looking at Little Traverse Conservancy's five-county service area, we've highlighted a few properties protected through the Conservancy and open to the public. These include Conservancy-owned preserves and properties now owned by local or state government

## Longer Hiking/Mountain Biking



### Goodhart Farms

595 acres with several parking areas and 7.5 miles of wooded and open trails.



### Raven Ridge

140 forested, hilly acres and 1.5 miles of trails available for biking and hiking. This preserve is adjacent to the Raven Hill Discovery Center.



### Oliver & Edna Birge

435 acres with 2 miles of trail. Overlook platform on Loon Lake. The preserve lies along 1.2 miles of Lake Huron.



### Colonial Point/ Chaboiganing

A total of 482 acres and more than 2.5 miles of easy trails make for excellent hiking and biking through fields and towering oaks and pines.



### Vermilion Point

Combined with thousands of acres of adjacent State land, this 175-acre preserve with 1.75 miles of sandy Lake Superior shoreline provides wonderful beach walking.



see also Round Island Point

## Canoeing/Kayaking



### Crooked Lake Shoreline Preserves

Two different launch sites along Channel Road provide access to all five of our Crooked Lake preserves: Oden Island, The Black Hole, Rocky Point, Laughbaum, and Ponsheawaing.



### St. Clair Lake/ Six Mile Lake Natural Area

This 261-acre property with 2.3 miles of water frontage includes a launch for canoes or kayaks and a short hike to a platform overlooking St. Clair Lake. paddle also Rogers Homestead



### Hessel Beach

This public access and swimming beach right within the village of Hessel allows a launching site to access the Les Cheneaux Islands.

see also Marquette Island



### Pigeon River Preserves

Launch at Pigeon River Road and take out at M-68 for a scenic paddle along the shores of the Helmer's Dam and Uvivan VanCampen Preserves. Paddle in the spring to avoid low water conditions."

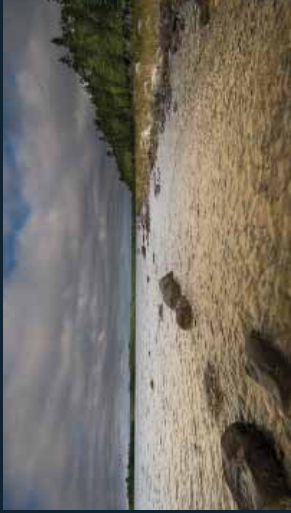


### Round Island Point

Although there is no launch site at the preserve, this is a fun sea kayaking day-trip destination. Launch at Brimley State Park for an 8-mile round trip, or Sherman Park in the Sault for a 12-mile round trip.



## Birding/Wildlife Viewing



### Thorne Swift

Three easy trails cover 30 acres taking you to a pond, a dune overlook, and the beach. A local birding favorite and a great place for kids with a full nature center to explore.



### Rogers Family Homestead

With 1.2 miles of frontage along the west bank of the Jordan River, this 86-acre preserve includes an easy 1.5 mile trail system.



a public canoe launch is near this preserve

### Marquette Island

More than 1,400 acres and nearly five miles of Lake Huron shore are protected on this Les Cheneaux island. Numerous bird species migrate through this region in the spring and fall.



### Lee Grande

A former buffalo ranch, these 2,400 acres are now owned by the State and managed as high quality wildlife habitat. A network of criss-crossing two-track roads invite quiet recreation.



### Bailey-Lagerstrom

With more than 2 miles of Lake Huron/St. Mary's River shore, this 422-acre property provides numerous opportunities to view wildlife.



## Close to Town



### Allan and Virginia McCune

Located 7 miles east of Petoskey, you will find three miles of trail loops on 168 acres with frontage on the beautiful Minnehaha Creek.



### Susan Creek

Located a few miles northeast of Charlevoix, this 223-acre preserve features a 1.5 mile trail system, a mile of frontage on Susan Creek, and nearly a mile along US-31.



### Mackinac Bay

Situated between Hessel and Cedarville directly off of M-134, this preserve includes a handicap accessible overlook of the bay.



### Agnes A. Andreae

One mile of hiking trails and a foot bridge over the Pigeon River are features of this 181-acre preserve with 1.3 miles of river frontage. Located five miles from Indian River.



### Clyde and Martha Williams

The Conservancy's first preserve on Drummond Island, these 80 acres include a 1.3 mile trail system. Points of interest include several forest types and an old stone wall.



that stand out as well-suited for the activities listed. For full descriptions, maps, photos, and directions about these preserves, you can call our office at 231.347.0991 for a copy of the preserve guide or visit [www.landtrust.org](http://www.landtrust.org).



Ruffed Grouse



## Double Time

SECOND CONSERVATION EASEMENT DONATED ON FAMILY LAND


WHEN TERRY SCHAEIDIG DONATED A CONSERVATION easement to protect his 100 acres of Chippewa County land in 2003, it was understood that in a matter of time, his brother Randy would follow suit. This past spring, Randy and his wife Karen completed their easement, bringing the total protected land to 153 acres.

Originally from Cedarville, the Schaedigs have owned the land since 1980. "At first, it was used primarily for deer hunting and cutting firewood," Randy said. "Since then, my brother has built a cabin on his property, and we've tried to manage the land through forestry management and timber stand improvements. This is really my brother's area of expertise, so the credit has to go to him!"

Today, four generations of the Schaedig family have hunted and enjoyed the land. One of Randy's favorite places to visit is a large stand of mature hemlock. Some

of the wildlife sightings have included coyotes, sharptail grouse, bobcat, ruffed grouse, and tracks of wolf and marten. "My daughter and I saw a fox and a bear on the same day during an early youth deer hunt a few years back," Randy said.

Land Protection Specialist Jay Neff noted that cougar tracks were identified by the DNRE just north of the Schaedig property last winter. "This is wild, beautiful Upper Peninsula country - the kind of place that defines that part of the state for all of us," Neff said.

"I enjoyed working with the Conservancy staff," Randy said. "Everyone was very helpful and I felt that the process was well laid out and explained to me along the way. While I can't guarantee ownership 50 years from now, this is a way to ensure that this parcel will remain as a continuous piece of wild land in the future." 

**Little  
Traverse  
Conservancy's  
38th  
annual meeting**

**Tuesday, August 3  
Boyne Mountain Resort**

10 am      meeting  
12 noon    luncheon

**Afternoon field trips to the Raven Ridge Nature Preserve and the Rogers Family Homestead Preserve.**

**Members, watch for your invitation coming soon or please call 231.347.0991 to make a reservation.**




Inland Waterway Nature Preserve

*Inland Waterway  
continued from cover*

speaking, one of the best ways to maintain or enhance the quality of a water body is to leave it the heck alone. This is why PCLA has been pleased to work with LTC on many

conservation projects.”

The map on page 1 shows how the new preserve directly adds to protection provided by other preserves. On June 24, a pontoon ride to the new preserve will depart from Ryde Marine in Oden (*see page 13*). 



*“Harbor Sailboats,” an original digital painting in encaustic medium by Dr. Kim Aikens will be featured in this year’s Save the Trees raffle.*

## 21st annual land protection fundraiser **Save the Trees**

**Saturday, July 10 6-8:30 pm**  
**Irish Boat Shop, Harbor Springs**

**A family-friendly event**  
with SEE-North’s Birds of Prey and other children’s activities.

**Food by Island Bean**  
**Music by Jelly Roll Blues Band**  
**Admission Tickets: \$75 (\$80/door)**  
**Raffle Tickets: \$50**

**No charge for children with an adult!**

**For tickets or more information, please call  
the Conservancy at 231.347.0991.**



## Summer Youth Program Series

**Lots of fun in store! No charge for these programs, but don't forget to pre-register by calling 231.344.1004 or 231.344.1010.**

### Knee High Naturalist Programs (ages 3-6)

**June 22-July 28 Tuesdays & Wednesdays, 10-11 am & 1-2 pm**

Due to the popularity of these programs, additional sessions were added this year. The theme is the same for **all four sessions** each week. Each one-hour session includes a hike, exploratory activities or craft, story, water, and a snack. Come prepared for outdoor play, with closed-toed shoes, layers, sun screen, and insect repellent.

**Tuesday, June 22 & Wednesday, June 23**

**PONDERIFIC!** *Spring Lake Park*

Hopping herps, finny fish, busy bugs and much more call a pond home. Come discover the wonders of life in a pond. We'll look and listen for the larger inhabitants and get up close and personal with some of the tiny critters that dwell below the surface. What special parts do they have? What special ways do they move? Can you move like they do? Have fun exploring this amazing habitat. Wear shoes that can get wet!

**Tuesday, June 29 & Wednesday, June 30**

**Goin' On A Nature Hunt!** *Spring Lake Park*

We're goin' on a nature hunt! I see a trail! Can't go under it, can't go through it, guess we'll have to go ON it! A fun twist to the scavenger hunt, we'll read the book, "Goin' on a Bear Hunt," then hike the trail to different habitats to discover who lives there, what grows there, and how the animals and plants navigate their way in nature. Fun activities along the way encourage movement, creativity, exploration and play.

**Tuesday, July 6 & Wednesday, July 7**

**Our Feathered Friends** *Spring Lake Park*

They have wings, beaks, claws, and feathers. They sing, fly, swim, and build nests. Birds are fascinating to watch and enjoyable to learn about. Fly on over to Spring Lake Park to explore the wonderful world of birds. Have fun listening for them, observing them in action, and mimicking their movements.

**Tuesday, July 13 & Wednesday, July 14**

**Bug Me!** *Thorne Swift Nature Preserve*

Roll over a log in the forest, find a lady-bug sunning herself on the beach, or watch a dragonfly at the pond! We'll read about insects and bugs and how they blend into their surroundings. Then we'll hike down the nature path seeking our camouflaged friends. Bug jars and magnifying lenses will help us capture the critters, learn about them, and release them back into their homes. After hiking, we'll visit the nature center to learn about the nature that calls Thorne Swift home!

**Tuesday, July 20 & Wednesday, July 21**

**Summer Sensations** *Thorne Swift Nature Preserve*

Awaken your senses with the sights, sounds, scents, and textures of summer. Look for the many colors of the forest, listen carefully for calling birds and buzzing insects, inhale the scents of the evergreens, bark, and flowers, and feel something velvety soft, bumpy, or smooth.

**Tuesday, July 27 & Wednesday, July 28**

**Who Lives Here?** *Thorne Swift Nature Preserve*

Explore animal homes just like the animal that lives there! First, listen to a story about animals and their homes. Then, quietly creep into the woods in search of some woodland creatures. We will search high and low in a forest, at a pond, and on the beach to learn more about the animals that live there. Be careful! You might have to find food for a mouse or hide in tall grass like a baby deer!

### Junior Naturalists Hikes (ages 7-11)

**June 24-July 29 Thursdays, 10-Noon**

The Junior Naturalist Series run Thursdays June 24 through July 29th. Bring sturdy, comfortable, closed-toed shoes, layers, sun screen, insect repellent, and water.

**Thursday, June 24**

**Adventures In The Sky** *Skyline Trail, Petoskey*

Salamanders, switchbacks and sweeping views, Oh My! Catch a glimpse of Lake Michigan from this new trail. More than 800 acres of land and an elevation of more than 1200 feet creates dramatic views of the northern Michigan skyline. The trail winds up in a switchback pattern, just like climbing a mountain! Lots of wildlife call this area home including the black bear and even a massasauga rattlesnake was recently seen. We'll keep an eye out for smaller species, such as red-backed salamanders, as we hike to the scenic overlook.

**Thursday, July 1**

**Wild Dens and Woodland Adventures** *McCune Preserve*

Where do the creatures hide? How do they make their homes? We'll hone our observation skills by walking through the un-nature trail, then search for secret spaces. What kind of den would you make? We'll use our creativity and ingenuity to build a temporary shelter ourselves using only what the forest provides.

**Thursday, July 8**

**Bugs-N-Bogs** *Stutsmanville Bog*

Using sweep nets and aerial nets we'll work our way through the tall grasses collecting whatever creepy crawlies we can find. Field guides, bug jars and magnifying lenses (we'll bring them) will help us identify some of the Earth's most unique critters. At the bog, we'll find a whole different environment for exploring life less than one inch tall! Wear long pants if you find tall grass too tickly.

**Thursday, July 15**

**Take a Walk on the Creek Side**

*Five Mile Creek Swamp Preserve*

Walk along a tributary to where it flows into Five Mile Creek. Explore the creek and check it out up close. Where does the creek come from? Where does it go? What sips from its edge? What hides in its bed? Enjoy views of the creek from atop a ridge with a dramatic slope to the water. This field trip is for the adventurous child! There are no established trails, so although the walking is not extremely difficult, it is not as easy as a maintained trail and will require maneuvering over logs and through branches.

**Thursday, July 22**

**Caching In** *Offield Family Preserve*

Using real Global Positioning System (GPS) units while hiking through a new nature preserve, we will learn all about geocaching! Geocaching is a high-tech treasure hunting game played throughout the world by adventure seekers. The basic idea is to locate hidden containers, called geocaches, outdoors and then share your experiences in the geocache you find, or online. All skill levels welcome. Conservancy staff will have GPS units available.

**Thursday, July 29**

**Adventures in Nature Photography** *Spring Lake Park*

Grab your digital camera for some photo fun with Sarah Mayhew. Refine your observation skills and take some cool nature photos to share with family and friends.

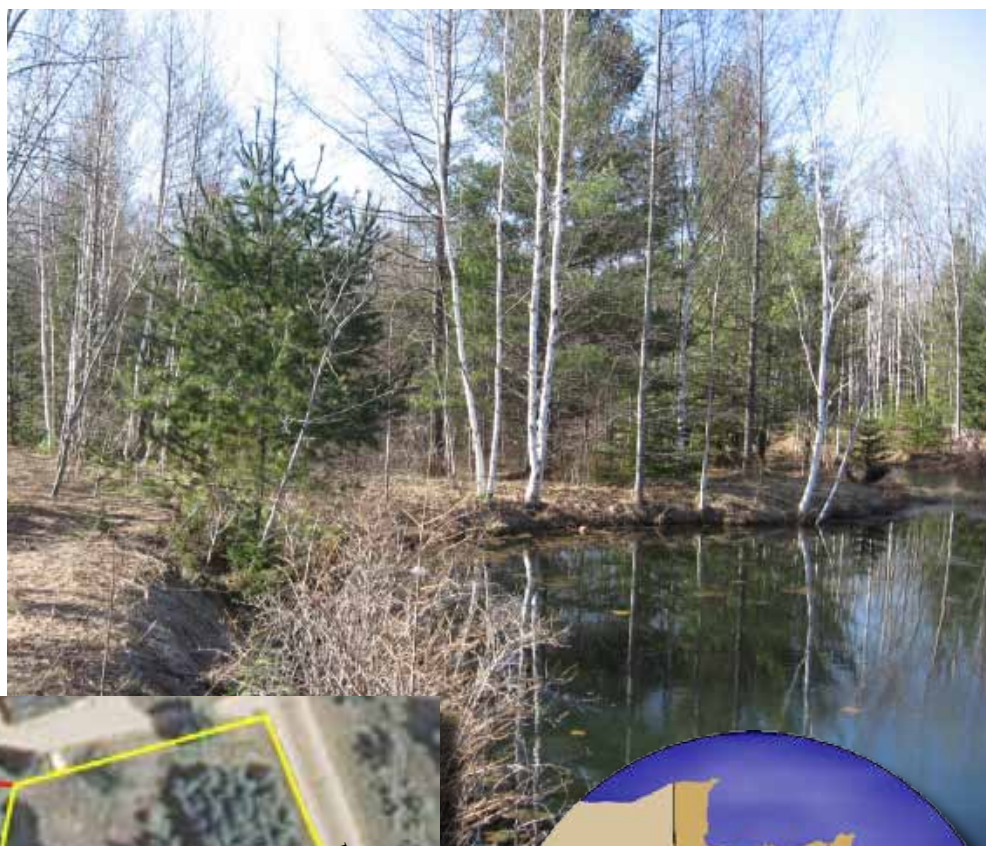


Emily Martin



## Wellman Preserve Gets Bigger

This spring, the Conservancy purchased five acres of land adjacent to the Wellman Preserve to double the size of this small preserve that lies along the Boyne River (see map below). “The addition provides an added buffer of undeveloped land to the preserve,” said Land Protection Specialist Ty Ratliff. Access to the preserve from the road is also now improved with the addition of nearly 600 feet of US-131 frontage.



## Conservancy Assists with State Park Addition

Little Traverse Conservancy assisted the state of Michigan by purchasing and holding a nine-acre addition to the Cheboygan State Park until state funds were available. This past spring, the State repaid the Conservancy and transferred the land into its own holdings. “This property was a natural fit for providing access to the park,” said Paul Kozegi, Cheboygan Park Supervisor. “We are very appreciative of the Conservancy for helping us buy time until the purchase could be completed. There was a high likelihood that the land would have gone to a private sale and been subdivided,” he said.

The 1,298-acre Cheboygan State Park lies just outside of the city along Lake Huron and includes most of a peninsula along Duncan Bay. The park features rustic and modern camping facilities along with several miles of marked trails.





# New Members

The Conservancy would like to thank the following new Friends or Benefactors or members who have increased their level of giving within the Friends or Benefactors level from March 1, 2010 to May 20, 2010

## Individual or Family Friends or Benefactors

Thomas and Cecelia Bolz  
Mrs. Mary Driggs  
Mr. and Mrs. Gordon Hassing  
David and Cecily Kenny  
Mr. Barry A. Petersen  
Steve and Brenda Ramsby  
Eric Russell & Randel Richner  
Mr. Frederick E. Sanquist Jr.  
Catherine and George Wilson

## New Contributing Members

Del and Jane Andrews  
Ms. Florine Bialek  
Ms. Kalyn Brandewie  
Mrs. Jane A. Guttman  
Chris and Lynsa Knickerbocker  
Ms. Cynthia Mnich  
Dennis Fulbright and Jane Schneider  
Marsha and Mark Tompkins  
William and Diane Yocum

MaryJane Ulrich

## Scholarship at MSU Honors Little Traverse Conservancy, Bailey

JOHN CAMPBELL, CHARLEVOIX LANDSCAPE ARCHITECT and former Trustee of the Little Traverse Conservancy, and his wife Mary Lee have endowed a scholarship at Michigan State University for graduate students interested in environmental design. Contributions in memory of his late mother, Helen Campbell, are among the gifts which have helped expand this endowment. Hoping to help educate future leaders of the land conservation movement, he has joined together with LTC to create the Little Traverse Conservancy–Thomas C. Bailey Scholarship.

Campbell said that his goal with the scholarship is “to encourage more multi-disciplinary work, and also develop young professionals who, like Bailey, can be leaders in land conservation work.” Campbell notes that his studies at Michigan State have been multi-disciplinary, with landscape architecture at its core. “The University’s traditional specialized degree programs are now merging into inter-disciplinary programs,” he says. After working together with Tom Bailey, they soon discovered that this was something they shared. (Bailey’s graduate studies encompassed land use, resource economics, and environmental law.)

The scholarship, according to Campbell’s endowment, is intended to “attract students and practicing professionals with undergraduate design backgrounds in fields such as Landscape Architecture; Horticulture; Parks, Recreation

and Tourism Resources; Human Environment and Design; and Architecture. The degree will allow them to upgrade their problem-solving skills in the areas of design theory, methods, and technology and encourage individuals to seek this degree in order to improve their job competitiveness, develop their problem-solving skills, and obtain higher entry-level positions.” The degree is seen as an alternative to traditional professional degree programs. Students from other backgrounds are encouraged to inquire about their qualifications for admission.

The Conservancy’s Board of Trustees approved the plan in March, granting permission to use its name on the scholarship along with that of Bailey. The Board approved promoting the program to our summer interns and also from time to time making people aware of it through the Conservancy’s publications and/or web site.

Candidates will be screened and selected by MSU, and anyone interested as a candidate for the scholarship should contact Professor Warren Rauhe at the MSU School of Landscape Architecture, 517.432.0704, email [rauhe@msu.edu](mailto:rauhe@msu.edu) or [spdc@msu.edu](mailto:spdc@msu.edu). To make a contribution to the endowment, contact Karen Wenk, Michigan State University Development Office 1.800.232.4MSU or email [wenk@msu.edu](mailto:wenk@msu.edu). Contributions are also being accepted through the Conservancy.





L-R: Sally and Kenyon Stebbins, Jerry Keeney, and Cindy Mom at the Offield Work Day.

## Biggest LTC Volunteer Work Day Ever!

Fifty-three volunteers turned out on a beautiful Saturday in April to help take care of the new Offield Family Nature Preserve near Harbor Springs. Petoskey's Scout Pack 5, along with many other volunteers, were based at the Hedrick Road entrance. They cleaned up four different dump sites in the western part of the property, removing hunting blinds and old glass and metal. Six big loads of trash were hauled to the nearby transfer station, and almost everything was recycled. Volunteers based at the Quick Road entrance planted more than one hundred donated trees (*see below*), cleared invasive honeysuckle shrubs, and cleaned up roadside trash. Another crew went deep into the south and east parts of the property, clearing trails and creating two brand new trail segments. It's a testament to the size of the Offield Preserve that these different crews were out there working all day and never even saw each other. Many thanks to everyone who helped! (*See next page.*)



Volunteers plant pine and oak seedlings at the Rogers Family Homestead Preserve (left) and the Offield Family Nature Preserve (right).



This spring, the Little Traverse Bay Gobblers a chapter of the National Wildlife Turkey Federation, donated hundreds of trees to the Conservancy to plant at nature preserves. In April, many were planted at the Offield Family Nature Preserve, and dozens more were planted on the Rogers Family Homestead Preserve in May by students with Charlevoix Family Court - Juvenile Division. "The kids are excited to canoe the Jordan later this summer and all want to check on 'their trees' that they helped to plant!" said Mary Hickman, supervisor for the group.

"We get trees every year and our members plant them to improve wild turkey habitat," said John Janecki, president of the local chapter. "This year we decided to do something different by collaborating with Little Traverse Conservancy, a partnership we hope to continue," John added.

The work of the Little Traverse Bay Gobblers includes a winter feed program, raising plants for springtime plantings, Archery in Schools, wood duck house building, youth events, and fundraisers that allow them to provide scholarships and last year donate \$1,000 to food banks. For more information, please visit [www.nwtf.org](http://www.nwtf.org).

## Summer Programs at Thorne Swift

### Children's Programs (ages 5-10)

Thursdays, July 8, 15, 22 29, August 5, 12, 19, 10:30 a.m. – 12:00 noon

### Birds & Blooms w/Sally Stebbins & John Riggs

Saturday, July 17 and Saturday, August 14 at 10:00 a.m.

### Stargazing for Families

Saturday, July 17, Friday, August 6, and Saturday, August 14 at 9:30 p.m.

### Storytelling & Night Hike

Friday, July 23 and Friday, August 20 at 9:00 p.m.

8 - [www.landtrust.org](http://www.landtrust.org)

Call 231.536.6401 for  
more information.



Little Traverse Conservancy assisted West Traverse Township by developing five new interpretive signs for Thorne Swift Nature Preserve.



# Stewardship Work Days - 2010

*The following work days have been scheduled for the stewardship work season. If you would like to join us, please call 231.347.0991 for more information*

## Thursday, July 8 9 am - 3 pm

The **Adolph and Margaret Gauthier Preserve** consists of 38 acres on the western outskirts of Cheboygan. Situated adjacent to Lake Huron, the Cheboygan Marsh and the Little Black River, this preserve is a "diamond in the rough" (with the emphasis on rough, as a fair bit of junk clean-up is needed). Get to know this interesting little preserve better while making it a better home for wildlife.

## Tuesday, July 20 9 am - 3 pm

The **Kalman Preserve** near Harbor Springs has an exceptionally high quality and diverse assemblage of native plants. Unfortunately, invasive exotic species such as yellow flag iris, purple loosestrife, spotted knapweed, and shrub honeysuckles have become established. Join LTC staff to spend an hour or a day helping to rid this preserve of undesirable plants.

## Wednesday, August 18 9 am - 3 pm

A new two-mile long loop trail was constructed on the **Birge Preserve** in the Les Cheneaux area in 2008. Since then, LTC has been making improvements to the trail. Some wet spots are found along the trail and several sections of boardwalk are needed to make this a truly all-season trail. Put your skills to work to help complete the boardwalk construction this year. (P.S. You won't have to carry in any lumber!)

## Saturday August 21

Participate in one of the aforementioned events and receive an automatic invitation to LTC's annual **Stewardship Volunteer Appreciation Luncheon**. This year we're planning to hold it at the Lake Superior State University campus in the Soo, with a catered meal and a side trip to a nearby LTC preserve, or perhaps the LSSU's Aquatic Research Lab (stay tuned for more details).

## Tuesday, September 14

Spend three hours participating in the seventh annual Day of Caring, a community-wide volunteer work day coordinated by Char-Em United Way. This year we plan to host volunteer events at the **Marvin Preserve** in Charlevoix County (clean-up) and **Goodhart Farms Preserve** in Emmet County (trail maintenance).

## Saturday, September 25 10 am - 3 pm

Travel to the **Cook Island Preserve** on exotic and far-away Sugar Island (actually, it's just east of Sault Ste. Marie) for a day to join with local islanders and LTC staff to improve access, trails, and signage and remove old duck blinds and pig huts. (Now we're betting you're really intrigued!)

# Thank you...

Don Johnson, bussing manager at Fletch's, for helping with the parking design at the Offield Family Preserve.

John Janicki and the Wild Turkey Federation for donating tree and shrub seedlings for planting at LTC nature preserves.

Walt Lapeer and Mike Cromley for helping with stewardship issues at the Helmer's Dam Preserve.

Joe and Lisa Dannenberg for providing cut-rate snow plowing at the Offield Family Nature Preserve last winter.

Bonnie Mikkelsen and Tim Dewick for facilitating an early season visit to the Seiberling Stewart Preserve on Marquette Island for trail planning and clearing.

John Griffin, Tim DeWick, Larry and Sharon Turner, and Jim and Mary Dalbec for help hauling in boardwalk materials at the Birge Preserve.

Glen Matthews for help developing preserve management plans.

Doug and Bernie Whitcomb for showcasing their property for an easement landowner newsletter article.

Maureen Conklin and Straits Area Audubon Society for partnering on the Reed's Alverno field trip.

Gary Johnson, president of the Tittabawasee Chapter of the North Country Trail, for his help on the May 1 Skyline Hike.

Brenda Archambo of Sturgeon for Tomorrow for leading a field trip along the Black River and for going above and beyond in her hospitality. Thanks also to Conservation Officer Matt Thenick and Tim Cwalinski, biologist with the DNRE, for their time.

Marta Olson for technical website support.

MaryJane Ulrich and Martin McReynolds and Bill Vander Roest for donating use of photos.

Mary Hickman and the Charlevoix Family Court-Juvenile Division for planting trees at the Rogers Family Homestead Preserve.

The following people for helping at the Offield Earth Week Work Day:

John Bailey	Kyle Kurtz	Denise Rice
Marlene Bartson	Matt Kurtz	Kelly Ronquist
Dillan Bieling	Martha Lancaster	Camden Smith
Jodie Bieling	Lisa Loyd	Carlin Smith
Carter Cohen	Ric Loyd	Eric Smith
Anton Epskamp	Vickie Lyon	Eric Smith, Jr.
Raymond Epskamp	Michael McGeehan	Kenyon Stebbins
David Farley	Patrick McGeehan	Sally Stebbins
Joseph Farley	David McVicker	Dick Taylor
Casey Festerling	Mike Meadows	Ed Tibble
Kyle Festerling	Lisa Morris	Jesse Tibble
Ted Festerling	Geno Oprisiu	Paul Van Klaveren
Bonnie Frank	Dakota Panicali	Keith Vreeland
Gregg Garver	Michele Burian Quintiliano	Mandy Vreeland
Shawn Gray	Colin Redman	Craig Williams
Doug Hill	Scott Redman	Kallan Williams
Beverly Jaekl	Sean Redman	Brenda Wodek
Jerry Keeney		Jerry Wodek



The following gifts were received  
March 1 - May 28, 2010

## Memorials

### Jack Arnold

The Radke/Brandi Family

### Jane Marie Bailey

Catherine and George Wilson

### Vera Bridges

Anne and Michael Mesmer

### Patty Brigham

Mr. and Mrs. George W. James

### Charles Burke

ARC Real Estate Management Team

Mr. John G. Cameron, Jr.

Ms. Martha Costello

Ms. Margaret A. Coughlin

Mr. and Mrs. Roger Cummings

Ms. Susan Dickey

Dickinson Wright, PLLC

Mr. Stefan R. Dull

Mrs. William A. Fisher, II

Ms. Martha Gilchrist

Ms. Patricia Harvey

Steve and Linda Holladay

Ms. Jane Huber

L'Arbre Croche Club

Dick and Jane Lent

Robert V. and Susan Peterson

Mr. and Mrs. William A. Petzold

Paul and Pam Wyzgoski

### Helen Campbell

Ms. Ellen Addington

Bunker, Clark, Winnell, & Nuorala, P.C.

Ms. Elizabeth Campbell

John W. and Mary Lee Campbell

Jonas Jeswald and Carolyn Campbell

Mrs. Marjory C. Dinwiddie

John and Helen Donahue

Mr. and Mrs. Michael L. Dow

Mrs. Lavern M. Dowty

Dr. and Mrs. Reed K. Freidinger

David and Cynthia Garland

Mrs. Ruth Betty Renton

Duane and Pat Taylor

Robert and Norma Weller

### Michael M. Carey

Mr. and Mrs. Johnson Hightower

Mr. and Mrs. George W. James

Mr. and Mrs. Michael L. Turnbull

Charles and Kerry Wilson

### John W. Childe, Jr.

Mr. and Mrs. Thomas H. Horner

### Norm Crowder

Mr. and Mrs. Thomas H. Horner

### Nathaniel Clifford Denay

Charles J. Huebner, MD and  
the staff of the Harbor Arthritis Center

### David DeWindt

Richard A. and Marcia B. Ames

### The Dilworth Twins:

#### Jim and Joan Ripstra

Mr. Jack D. Ripstra

### L. Thomas Dulaney, Jr.

Mrs. William Barnes, III

Mr. and Mrs. Thomas H. Carruthers, IV

Mr. and Mrs. J. David Cummings

Mr. and Mrs. James K. Dobbs, III

Mr. and Mrs. Johnson Hightower

Mr. and Mrs. Thomas P. Mackell

Mrs. Walter L. Ross, II

Mrs. Mark L. Townsend

### Jim Faunce

Dave Kring Chevrolet-Cadillac

### John W. Fischer

Ms. Eliece B. Aiman

Al & Jim's Tree Service

Mrs. Joey Arbaugh

Mr. and Mrs. J. Hord Armstrong, III

Terry and Lyndi Balven

Thom and Carrie Blanck

Ted and Kathy Bodzick

Ms. Margaret Braun

Jim and Kathy Bricker

Bunker, Clark, Winnell, & Nuorala, P.C.

Nancy Carapellotti

John and Nona Carr

Mr. and Mrs. Thomas H. Carruthers, IV

Chuck Feucht and Anita Clark

Dr. and Mrs. Allen Damschroder

Mrs. James L. Dilworth

Mr. and Mrs. James K. Dobbs, III

Mr. William P. Dohm

Mrs. Mary Driggs

Duffers League

Mr. Maurice Dunne

Ed and Anne Dziuba

Mr. and Mrs. James H. Everest

Mrs. Jean I. Everest

Ms. Martha Feazell

Ms. Tracy Fischer

Ms. Elizabeth Frey

Ken and Elaine Garver

Mr. Daniel Gaven

Linda and Gary Gidley

Danielle Gee

Mrs. Barbara Bohls Graham

Mr. Harvey Grotrian

Harbor Springs Area Chamber of Commerce

Harbor Springs Education Association

Harbor Springs Public Schools Support Staff

Anne and Hord Hardin

Ms. Kathy Hart

Tim and Lisa Hayner

Niles and Shirley Hill

Hilliard Lyons

Mr. and Mrs. Thomas H. Horner

Mr. and Mrs. David H. Irish

Mr. and Mrs. Laban Jackson

Mr. and Mrs. George W. James

Mrs. Eleanor Jardine

Juilleret Contractors: The Schwarks and Juillerets

Tim, Sharon and Kraeg Kepford

Winnie and Emory Kesteloot

Mrs. Patsy Ketterer

Ms. Stephanie Keywell

Mr. and Mrs. William Kolinski

Mr. and Mrs. Edward Koza

Randy Wiseman and Alice Kraepel

Dave Kring Chevrolet-Cadillac

Earl and Barbara Larson

The Lebanon Management Team: John, Tom, Julio,  
Deb, AC and Tory

Mr. and Mrs. Richard Lent

Mr. Kyle Lieberman

Mrs. Susan Lightfoot

Freddie Lindahl

Seberon and Dianne Litzenburger

Liesa and Jay Malik

Mike and Linda McElroy

Mr. and Mrs. William McElroy

Ms. Carol Bennett McGeorge

Ms. Michele McHugh

Mrs. Deborah Melges

Mr. Randall Meono

Roger and Carole Moore



MaryJane Ulrich



Ms. Elizabeth Mrozinski  
 Marilyn Davies and David C. Muzzall  
 Chris and Kathy Noble  
 Heather O'Brien  
 Mr. Stuart R. Olson  
 Stuart and Linda Olson  
 Chuck and Susan Raisanen and Family  
 Ms. Robyn Rakoniewski  
 Mrs. Jerrie Rockwell  
 Ms. Ethel T. Rose  
 Robert and Suzanne Ross  
 Mr. and Mrs. Christopher M. Searles  
 Mr. and Mrs. David C. Searles  
 Shelia Seaver  
 Dave and Ruth Skop  
 Mr. and Mrs. Carlin Smith  
 Mr. and Mrs. David W. Smith  
 Mrs. Patrick A. Smith and Family  
 Kenyon and Sally Stebbins  
 Mr. and Mrs. Winston L. Stebbins  
 Carol Stewart  
 Herb and Peggy Stockham  
 Ms. Kate C. Stockham  
 Sally Sullivan  
 Ms. Judy Szor  
 Dick and Jerry Taylor  
 Mrs. Louise Taylor  
 Ms. Margarete Thomsen  
 Marsha and Mark Tompkins  
 Mrs. Mark L. Townsend  
 Mr. and Mrs. G. Sheldon Veil  
 Sara Ward  
 Ms. Marylou Warren  
 Gerald and Gail Wells  
 Brent, Tina, and Molly West and Jacob Merrill  
 Mr. and Mrs. Byron L. West  
 Joelle Wilcox  
 Brad and Jan Wilkins  
 Charles and Kerry Wilson  
 Mr. Bill Zwick

**Patricia Ann Gallatin**  
 Ron and Wanda Simandl

**Ruby Nell Gardner**  
 Mrs. Elizabeth Howe

**Irene D. Granger**  
 Max and Mary Putters

**Elizabeth Harp**  
 Carol and Ed Zellner

**Jeane Landers**  
 Bill and Margaret Stude

**Elsie Lauer**  
 Frank and Eve Lauer

**William S. Lorimer**  
 Mr. Michael Ahern and Family  
 Irene Christianson  
 Nels, Eva and Maya Christianson  
 Mary Christianson  
 Bill and Karen Dickieson  
 Michael, Martha, Sarah and Jamie Honeycutt  
 Mr. Robert Kay  
 Julie and Tom Monahan  
 Bill and Gayle Peck  
 Ms. Barbara Romig and Family  
 Andrew and Emma Weichmann

**John G. McCoy**  
 Ms. Eliece B. Aiman  
 Mr. and Mrs. Clarence C. Barksdale  
 Mr. and Mrs. Mark J. Bissell  
 Mrs. Wallace H. Cole, Jr.  
 Mr. and Mrs. J. David Cummings  
 Mr. and Mrs. James K. Dobbs, III  
 Mr. and Mrs. Mark Townsend Driggs  
 Mr. and Mrs. Michael J. FitzSimons  
 Ms. Judith A. Gillow  
 Mr. and Mrs. Johnson Hightower  
 Mr. and Mrs. W. Anthony Huffman  
 Mr. and Mrs. George W. James  
 Mr. and Mrs. Edward Koza  
 Mrs. Barbara N. O'Hara  
 Dave and June Parrish  
 Bill and Margaret Stude  
 Charles and Kerry Wilson

**Ludwig F. Rohe**  
 Don and Kathy O'Connor

**Mary Shands**  
 Charles and Kerry Wilson

**Robert H. Shepard**  
 Mark Lercel

**Denice Summers**  
 Mr. and Mrs. William K. Howenstein  
 Mr. and Mrs. Thomas P. Mackell  
 Mr. and Mrs. Phillip B. Newman, III

**Nicholas Vassalo**  
 Marty and Randy Allran  
 Neal and Madonna Allread  
 Brighton NC Machine  
 Ms. Sher Butzine  
 Jack and Heidi Clausnitzer  
 Colleagues of Peter Vassalo  
 Ms. Shari Daniels  
 The Degnen Family  
 Lana Ewing and Alex Forrest  
 Stevi and Bill Forsyth  
 The Honors Attorneys: Ashton, Erica, Louise,  
 Katy, Mary, Matt and Summer  
 Dennis and Jan Laabs & Family  
 Ms. Katherine Mastman  
 Ken and Janet Miller  
 Ms. Eve Marie Stocker

**Ward Walstrom, Sr.**  
 Mrs. Joey Arbaugh  
 Mr. and Mrs. Thomas H. Carruthers, IV  
 Mr. and Mrs. James K. Dobbs, III  
 Max and Mary Putters

**David Wassenaar**  
 Mrs. Lavern M. Dowty

**Charles P. Willis**  
 William and Janet Vuillemot  
 Ms. Linda Zaander

**Sumner Green Winkjer**  
 Mrs. Joan Keller

**Charles S. Winston, Jr.**  
 Mrs. William Barnes, III  
 Mrs. T. Kemper Brotherton, Jr.



Marylane Ulrich

Mr. and Mrs. Thomas H. Carruthers, IV  
 Mr. and Mrs. J. Oliver Cunningham  
 Mr. and Mrs. Delano deWindt, II  
 Draftfcb  
 Mrs. John W. Fischer & Family  
 Mr. Charles Hollerith, Jr.  
 Mr. and Mrs. James H. Howe, III  
 Mr. and Mrs. William K. Howenstein  
 Mr. and Mrs. W. Anthony Huffman  
 Mr. and Mrs. Laban Jackson  
 Mr. and Mrs. George W. James  
 Mrs. John C. Jansing  
 Mrs. Joan Keller  
 Mrs. Elizabeth C. Larson  
 Seberon and Dianne Litzenburger  
 Mr. and Mrs. Thomas P. Mackell  
 Mr. and Mrs. Archibald McClure, Jr.  
 Mr. and Mrs. John B. McCoy  
 Ms. Virginia McCoy  
 Susan and Bill Montgomery  
 Mr. David P. Reynolds  
 Mrs. Louis Seelbach  
 Mrs. Mark L. Townsend  
 Mr. and Mrs. G. Sheldon Veil  
 Susan and William Volckens

**John Woodhams**  
 Seberon and Dianne Litzenburger

**Thomas 'Tim' Wright, MD**  
 James and Nancy Scott

## Honorariums

**Bernie Clark in honor of your 90th birthday**  
 Mrs. Mary Fischer & Family

**Pamela and Daniel Sanquist in honor of their birthdays**  
 Mr. Frederick E. Sanquist, Jr.

**Patrick N. Wolff in honor of achieving the rank of Eagle Scout**  
 George and Susan Notarianni



*Catch the Energy!*  
**Your Passport to Adventure is Here!**

Getting Kids Outdoors (GKO) is introducing a year-long collaborative project that directly benefits children, families, and local organizations. Modeled after the National Park Service's "Junior Explorer" program, Passport to Adventure encourages children and their families to get outdoors and explore, while promoting local events, programs, and nearby natural destinations.

After each outdoor experience, children record their observations and experiences in their passport on the page designated to each location. Once the experience and correlating passport page has been completed, children will receive an official GKO stamp (stamping provided by staff at each location or office) to prove their participation.

To celebrate participants and their accomplishments, a ceremony will be held at Pond Hill Farm at the end of each summer. Awards will be given out for participation. (Completion of Passport not necessary to attend the ceremony.)

GKO hopes that the Passport to Adventure will be an ongoing activity for everyone to enjoy all year long.



Participating organizations for exploration include but aren't limited to Raven Hill Discovery Center, Pond Hill Farm, SEE-North, and Little Traverse Conservancy.

With help from Harbor Springs Area United Fund, a pilot of the Passport to Adventure program will be conducted through Harbor Springs elementary schools this fall.

Passports are available to download at [www.getting-kidsoutdoors.org](http://www.getting-kidsoutdoors.org).

*This year in northern Michigan!*



*Annual Conference of the*  
**Michigan Alliance for Environmental & Outdoor Education**  
**Engaging Students in**  
**Science & Stewardship**  
**Friday-Sunday, October 8-10, 2010**  
**University of Michigan Biological Station (near Pellston)**

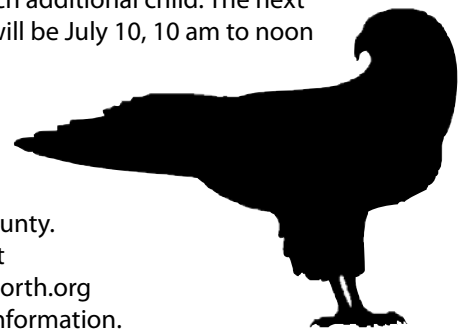
#### **Conference Strands**

- Environmental and global change monitoring
  - School-community partnerships to address a local stewardship need
  - Integrating environmental education into all disciplines
  - Outdoor teaching skills and techniques
- ...and kayaking, night sky, fall colors, new friends, exciting ideas, FUN!

*A limited number of scholarships are available through the Petoskey-Harbor Springs Area Community Foundation. Please call Melissa at 231.344.1004 for more information.*

**[www.michiganenvironmentaled.org](http://www.michiganenvironmentaled.org)**

Little Traverse Conservancy continues to partner with SEE-North in the Junior Birders Program. Junior Birders travel to a new destination once a month to learn about birds and their habitats. Annual membership fee is \$15/year and \$10 for each additional child. The next program will be July 10, 10 am to noon at the Waldron Fen in north-eastern Emmet County. Please visit [www.seenorth.org](http://www.seenorth.org) for more information.



mark  
your  
calendars...



SEE-North's 2nd annual conference  
 September 18-19, 2010 - Boyne Highlands  
[www.seenorth.org](http://www.seenorth.org)

Skyline Trail Hike



Black River Sturgeon Overlook

## Summer Field Trips

Come on out and join us! As a courtesy to our trip leaders, many who are volunteers, please pre-register for a Conservancy field trip by calling 231.347.0991. No charge unless noted.

### Boat the New Inland Waterway Preserve

**Thursday, June 24 6:30 pm**

Come see the new Inland Waterway Preserve and other Crooked Lake preserves first-hand by joining Conservancy staff and Ryde Marine for an evening pontoon tour. We will depart promptly at 6:30 from Ryde Marine in Oden. Ryde Marine is donating use of their boats, but donations toward the project's stewardship costs will be accepted. Limited to 17 participants, please pre-register by calling 231.347.0991.

### Sea Kayaking Les Cheneaux

**Thursday, July 22 10 am to 4 pm**

Join Woods & Water Ecotours on a guided paddling excursion among the blue waters and forested shorelines of Les Cheneaux. We will paddle to the 192-acre Seiberling Stewart Nature Preserve, on Marquette Island. We'll land at Marquette Bay, and hike on a brand new trail across the preserve to the Lake Huron beach. Here we'll break for an Up-North Picnic lunch, and stunning views of the Straits (from an unfamiliar angle). No prior experience is needed, but participants must be in good physical condition. Total paddle distance is 4 miles; round trip hike is less than a mile. Trip is limited to 10-12 people. Cost is \$60 per person including lunch, kayak and gear rental, instruction and guide service. To make your reservation, please contact Jessie Hadley at 906.484.4157 or [www.woodswaterecotours.com](http://www.woodswaterecotours.com).

### Family Nature Hike at the Offield Preserve

**Wednesday, July 14 6:30 pm**

Spending time in nature together is a great family bonding experience! Join our naturalist Alison Berry and her family on a guided

nature walk through the Offield Family Nature Preserve. Discover the more than three miles of trails at this 390-acre property. Learn the names and characteristics of some of northern Michigan's native plants. Above all, discover the rich beauty of northern Michigan available for your family to enjoy at any time.

### Legends, Labyrinths, & Lore

**Sunday, August 8 2-4 pm**

Join Jennifer Eis and Don Ward, authors and lecturers, for an educational walk-about at their 50-acre protected private property. Site of the "Wisdom Keeper-Wisdom Seeker" summer lecture series for the past 12 years, this is a rare and wonderful opportunity. Weather permitting, you will be free to explore the teachings of the Medicine Wheel, walk the largest turf Labyrinth in Michigan, sit in the Talking Circle or the coils of the Great Serpent. Interpretive signs at each of the features will allow for a self-guided experience. Arrive anytime between 2 and 4 pm and expect the unexpected. Due to the walking and fragility of structures, this program is not suitable for young children. Pre-register and get directions through the Conservancy at 231.347.0991.

### Discover the Elmer Johnston Preserve

**Thursday, August 19 10 am to noon**

The 220-acre Elmer Johnston Preserve arguably has the best view of any preserve in the LTC's system. On a clear day six islands (North and South Fox, Beaver, Whiskey, Garden, and Hog) are visible. Almost two miles of trails wind throughout this hilly and mostly forested preserve. Join LTC staffer Doug Fuller on a guided exploration of the Elmer Johnston Preserve. Bring your lunch along to stay afterwards for a picnic, if you'd like.



## Remembering John Fischer

...Tom Bailey

"It's the land, stupid." That was John Fischer's summation of why he helped to create the Little Traverse Conservancy in 1972 and served on its Board of Trustees until his death in March of 2010. In all discussions about his beloved community of Harbor Springs and the larger area of northern Michigan, John recognized that land is the key to a vibrant community, a healthy economy, a bright future and a high quality of life.

When it came to accepting donations of land to dedicate as public nature preserves for generations to come, John's attitude was almost always, "why not." And when there were opportunities to purchase key parcels for long-term protection, his approach was generally, "how can we do this." A familiar gesture at Conservancy board meetings when land protection projects were considered was the "John Fischer shrug." After the project had been described and discussed, when it was time to make a decision John could be seen at his customary spot at the end of the table shrugging his shoulders and holding out his hands as if to say, "why not!"

He made a lot of motions to initiate a lot of projects, and embodied the old saying about accentuating the positive. "To me, the glass is always half full," he said.

This can-do attitude extended beyond John's role with the Conservancy to his many community involvements. From his long service on the board of Northern Michigan Hospital to his involvement in organizations like the Little Traverse Yacht Club and the Crooked Tree Arts Council, John established himself as a hard-working board member. As a volunteer, John's activities ranged from running the clock at Harbor Springs High School athletic events to helping out with little league baseball, the Little Traverse Sailors and other community activities, especially for children.

In elective office, John served several terms on the Harbor Springs Board of Education, and even when not on the board helped with financial management. He was instrumental in building the Blackbird Elementary School, the community pool, renovation of the high school, and building of the Performing Arts Center. In general, if there was a charitable or community-oriented project in Harbor Springs, John could be counted on to help.

Along with his can-do spirit, John maintained a wonderful sense of humor and an overall friendliness that endeared him to the entire community.

I liked John Fischer, appreciated the opportunity to work with him, and am grateful that I was able to learn so much from him. John was the primary repository of institutional memory in the Little Traverse Conservancy, and he helped to keep the organization true to its roots even as it evolved and adapted with the changing times. His



courtesy Mary Fischer

unique ability to embrace new innovations while holding to traditional conservation values was an enormous asset to the Conservancy. When we added educational programs, John became an enthusiastic supporter. Even though these new activities were quite different from the traditional acquisition and stewardship activities that the organization had grown up with, John recognized that educational use of protected lands was a key element of the original vision of the founders and an important element of the overall conservation cause. John could help the Conservancy adapt without ever losing focus on the Big Picture.

We miss John terribly. That spot at the end of the board table will never be the same. At the same time, we will never cease to be grateful for all John did for our organization and our cause. He generously shared his philosophy, and generously recounted stories from the Conservancy's past to help new board members and staff understand how to maintain continuity while also embracing necessary and appropriate change.

He believed in growth, and he believed in life. He lived it well, and helped others to do so, too. Generations to come owe him their deepest gratitude. Thanks, John; God bless you!!

Our most sincere and heartfelt sympathies go out to John's wife Mary, daughters Kristin, Leslie, Debra, and Tracy, his five grandchildren and all the extended Fischer family.



# Winter Photo Contest Results

Seventy entries were submitted for the Winter Photo Contest co-sponsored by Little Traverse Conservancy and Bearcub Outfitters. Open to grades 3-12, the contest ran through March 31 and accepted images taken at a Conservancy nature preserve or natural area protected through the Conservancy. The photos were judged by Greg Czarnecki, Sue Dempsey, Bob deJonge, Holly Gedert, BJ Shawn and Charles Dawley. The top entry in each of three age categories were awarded a \$50 gift certificate from Bearcub Outfitters. Thirteen honorable mentions received Conservancy logo hats from Little Traverse Conservancy.

"Our primary goal was to encourage young people to get outdoors during the winter months, and we hoped to appeal to the more artistic and contemplative sides of the students," said Tom Bailey, executive director for Little Traverse Conservancy.

"The photo contest became a wonderful project for my students," said Kathy Slack, enrichment teacher for Petoskey Elementary Schools. "We were able to take a snowshoeing trip, investigate nature from the viewpoint of a camera lens, and after we developed our pictures we wrote some new forms of poetry. Thank you for this fantastic educational opportunity!"

**Grades 3-5:** *First Place:* "Leaf on Ice" by Sarah Vortruba  
*Honorable Mention:* "Tree Branches" by Austin Rose; "Crystals" by TaiLi Samson; "Snowball on Branch" by Jack Sparrow; and "Tree Trunk Innards" by Jordan Young

**Grades 6-8:** *Tied for First Place:* "Little Snowman on a Big Hill" by Max Meyerson and "Frozen Gurgle" by Paul Vermeesch  
*Honorable Mention:* "McCune Creek" by Tyler Adams; "Snow Branches" by Laura Hammond; "Snow on Fallen Branches" by Lizzie Winter; "Pileated Tree" by Sophie Wittenberg; "2 feet and 1 hand" by Kaycie Overmyer; "Cave with Frozen Icicles" by Cassie Schmidt; "Gall" by Olive Dwan; and "Pine Needles" by Brandi Goodburn

**Grades 9-12:** *First Place:* "Ice Drop" by Emily Ford  
*Honorable Mention:* "Brushing Snow" by Katrina Shafer



Leaf on Ice - Sarah Vortruba  
Round Lake Nature Preserve

3rd grade



Little Snowman on Big Hill - Max Meyerson  
McCune Nature Preserve

6th grade



Frozen Gurgle - Paul Vermeesch  
Susan Creek Nature Preserve

8th grade



Ice Drop - Emily Ford  
The Headlands

11th grade



## Board of Trustees

Carlin Smith, Chair  
John A. Griffin, Vice Chair  
Michael J. FitzSimons, Secretary

Joey Arbaugh  
John T. Baker  
James Bartlett  
Warner Blow  
Ian R.N. Bund  
Nadine Cain  
Michael Cameron  
George Covington  
Marilyn Damstra  
Michael Dow  
Mary Driggs  
Mary H. Faculak  
Jeffrey S. Ford  
Gregg Garver  
Jim Gillingham  
Carol Jackson  
George Jury  
Paul Keiswetter  
Dave Kring  
Dianne Litzenburger  
Lisa Loyd  
C. T. Martin  
Neil Marzella  
William T. McCormick  
Harriet K. McGraw  
Rob Mossburg  
Marta Olson  
Mark Paddock  
R. Hamilton Schirmer  
Marsha Tompkins  
Mary Ann VanLokeren  
Edward G. Voss  
Patsy Warner  
*(italics signify Trustee Emeritus)*  
Joan Winston

## Staff

Thomas C. Bailey  
EXECUTIVE DIRECTOR  
Thomas Lagerstrom  
ASSOCIATE DIRECTOR  
Mary Anne Griffin  
ADMINISTRATIVE STAFF  
Alison Berry  
Melissa Hansen  
ENVIRONMENTAL EDUCATION  
Charles Dawley  
Doug Fuller  
Cindy Mom  
LAND STEWARDSHIP  
Kieran Fleming  
Jay Neff  
Ty Ratliff  
LAND PROTECTION  
Mikki Snyder VanVuren  
EDITOR  
Anne Fleming  
COMMUNICATIONS

Little Traverse Conservancy, Inc.  
3264 Powell Road  
Harbor Springs, MI 49740-9469  
231.347.0991  
Address Service Requested

Non-Profit Org.  
U.S. POSTAGE PAID  
Conway, MI 49722  
Permit No. 908

Mackinaw City preschoolers at The Headlands



Petoskey Seventh Day Adventists at North Central Michigan College Natural Area

What do parents owe their young that is more important than a warm and trusting connection to the Earth? —**Theodore Roszak, *The Voice of the Earth***



Alanson Kindergartners at Thorne Swift