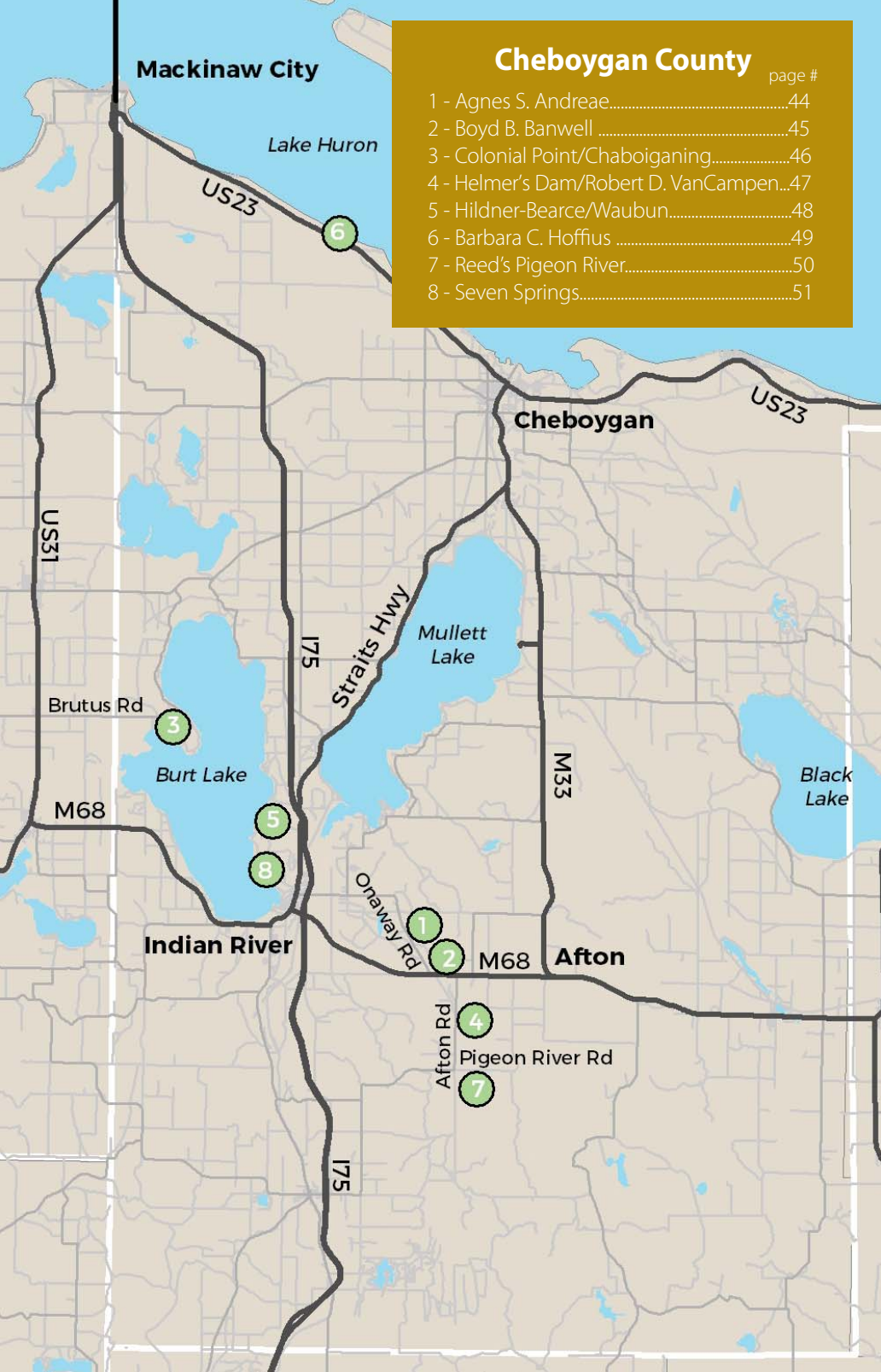


# Cheboygan County

page #

1 - Agnes S. Andrae.....	44
2 - Boyd B. Banwell .....	45
3 - Colonial Point/Chaboiganing.....	46
4 - Helmer's Dam/Robert D. VanCampen..	47
5 - Hildner-Bearce/Waubun.....	48
6 - Barbara C. Hoffius .....	49
7 - Reed's Pigeon River.....	50
8 - Seven Springs.....	51



CHEBOYGAN COUNTY  
**Agnes S. Andreae**

**Size:** 181 acres

**Frontage:** A mile along the Pigeon River

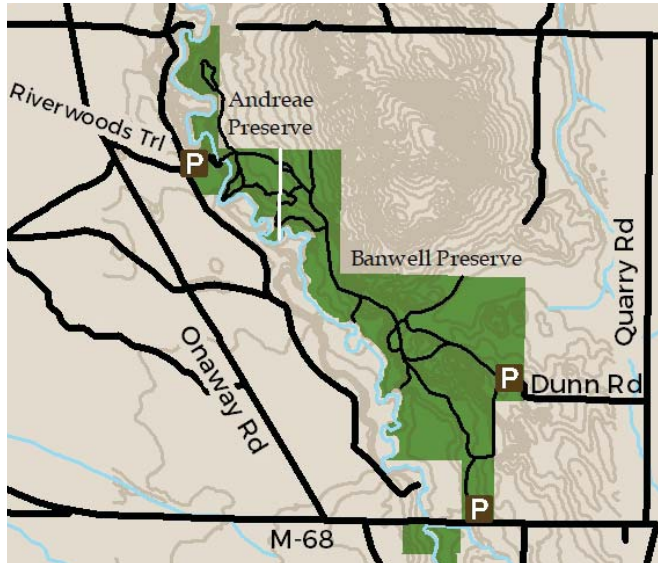
**Land Description:**

Set along the lower Pigeon River (a blue-ribbon trout stream), this preserve includes pine forests on steep bluffs above the river.

**Trails:** More than five miles of trails can be explored between the Andreae and Banwell preserves.

**History:** In 1983,

Agnes S. Andreae donated the original 27 acres with frontage on the Pigeon River, and several additions have been purchased since then. The donation included a small cabin overlooking the river. The cabin is available for use (at no charge) by non-profit or community groups. Reservations are required by calling 231.347.0991 or at online at [www.landtrust.org](http://www.landtrust.org). Hunting is not allowed here, but is at the adjacent Banwell Preserve.



**Directions:** From Indian River (exit 310 off I-75) take M-68 east 4½ miles . Turn left onto Old Onaway Rd. (Look for "Cochran Lake Public Access" sign). Go north on Old Onaway Rd 1.7 miles to Riverwoods Trail and turn right. At the T intersection with Big Sky Trail, the preserve sign is ahead of you. Park in front of split rail fence.



CHEBOYGAN COUNTY  
**Boyd B. Banwell**



TM/Petersen

**Directions:** From Indian River, go east on M-68 for about 6 miles. In Afton, turn left (north) onto Quarry Road, a gravel road. Go about ½ mile and turn left (west) on Dunn Road, a seasonal gravel road. Go another ½ mile. The preserve entrance, a gated two-track road, is on the left just past where Dunn Road turns to the north.

**Size:** 400 acres adjacent to the Andreae Nature Preserve

**Frontage:** Nearly three miles along the Pigeon River

**Land Description:** A continuation of the oak/pine forests and steep bluffs above the Pigeon River that you see at the Andreae Preserve.

**Trails:** See map and trail description for Andreae Preserve on previous page.

**History:** The original 320 acres were sold by Boyd Banwell in 2000 at a bargain sale. Since that time, the Conservancy has acquired additional parcels with more river frontage, allowing for extended trails.



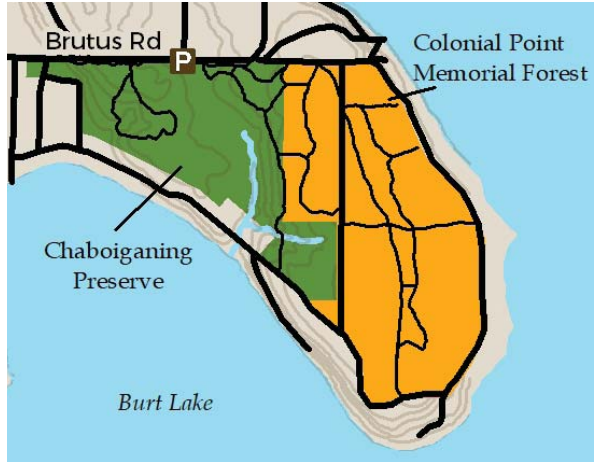
Todd Parker

UNIVERSITY OF MICHIGAN BIOLOGICAL STATION/LITTLE TRAVERSE CONSERVANCY'S  
**Colonial Point Memorial Forest/Chaboiganing**

**Size:**

Colonial Point Memorial Forest (UMB): *290 acres*  
Chaboiganing Nature Preserve (LTC): *194 acres*

**Land Description:** Entirely wooded, Colonial Point includes the largest old growth red oak stand in the northern Lower Peninsula with trees up to 150 years old. The Chaboiganing Preserve is a mixture of both open fields and woodlands.



**Trails:** More than 2½ miles of easy trails for hiking and skiing. The Burt Lake Trail runs along the preserve. Please note that hunting is allowed on Colonial Point.

**History:** In 1985, the Colonial Point Forest was purchased by a sawmill and slated for heavy logging. A grassroots group spearheaded by conservationist Wendy O'Neil expressed great concern for this treasured area because of its red oak forest, one of the most significant in the Midwest. In response, LTC coordinated efforts to purchase the property with a significant grant from the Michigan Natural Resources Trust Fund. Partners included the University of Michigan Biological Station, the Michigan chapter of The Nature Conservancy, local property owners, and citizens joining to raise the needed funds. Colonial Point is now owned by the Biological Station. In 1993, LTC used donated funds to purchase 192 acres adjacent to Colonial Point to form the Chaboiganing Preserve. An adjacent two acres were donated by the Pieniozek family in 2012.



**Directions:** Take US-31 north from Alanson 3.5 miles to Brutus Road. Turn right (east) and travel 4 miles on Brutus Road. Parking lot for the Chaboiganing Preserve is across from the old Burt Lake Market. Colonial Point Forest is located on the first road on the right past the preserve. The trailhead/entrance is ¼ mile east on Indian Point Road.



# Helmer's Dam/Robert D. VanCampen

**Size:** 200 acres

**Frontage:** 1¼ miles on the Pigeon River

**Land Description:** Before its protection, the property was the largest remaining private undeveloped stretch along the Pigeon River. Because the river becomes very wide at this point, the stretch is well-loved by anglers.

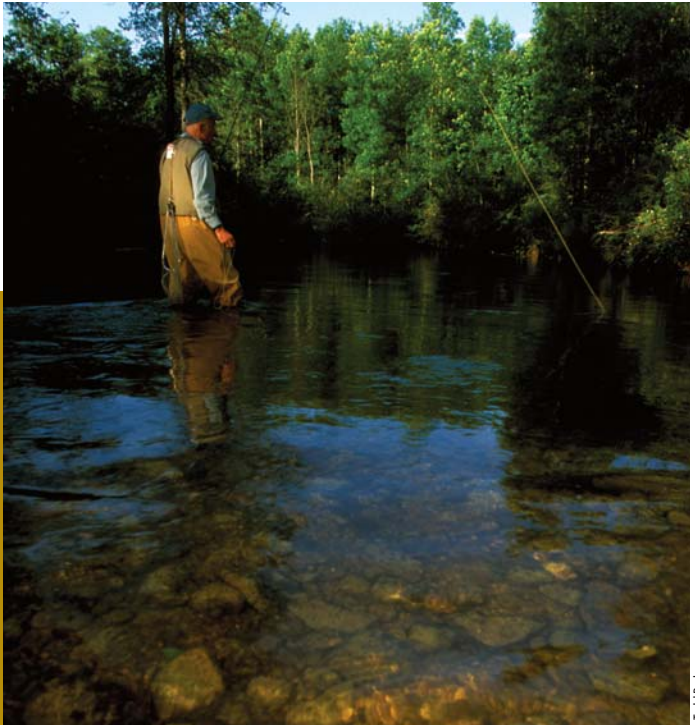
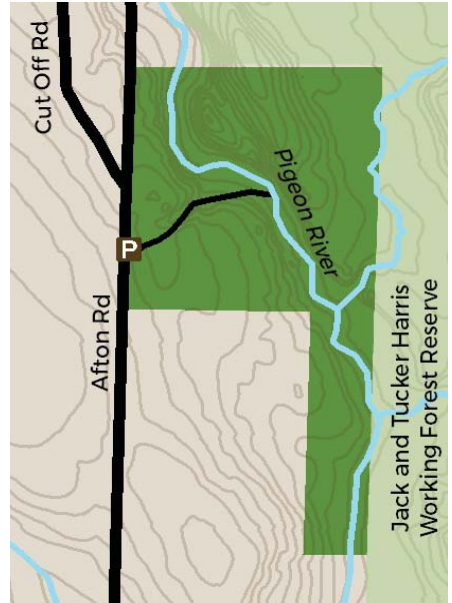
**Trails:** A two-track pullout is available with a short walk to the river.

**History:** When the property became available for purchase, a year-long fundraising campaign resulted in its acquisition as a nature preserve. The preserve is partly named for an old dam that used to exist at the site. John Woollam, a primary donor, also named the preserve in honor of his father-in-law, Robert D.

VanCampen of Harbor Springs, an avid hunter, fly angler, and outdoorsman. This preserve lies adjacent to the large Jack and Tucker Harris Working Forest Reserve on two sides.

## Directions:

From Indian River, take M-68 west 6 miles to Afton Road. Turn right and travel 1.3 miles to the preserve on the right where Cut Off Road branches to the left.



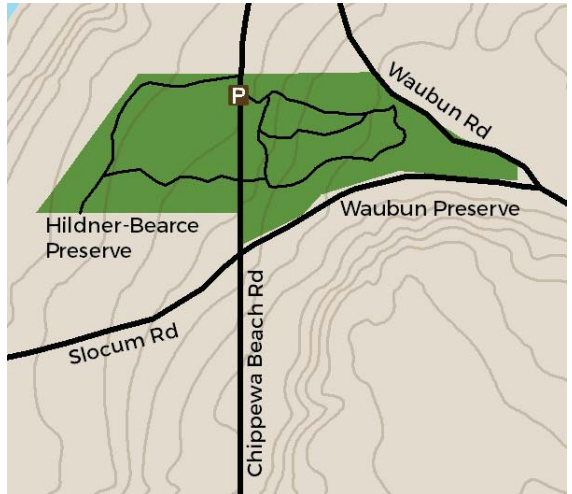
CHEBOYGAN COUNTY  
**Hildner-Bearce/Waubun**

**Size:** 27 acres combined

**Land Description:** Dominated by oak, maple, and beech and upland bluff habitat close to Burt Lake.

**Trails:** A short community trail is found on this property.

**History:** With the original parcel for this preserve donated in 2008 by Gretchen Bearce, the preserve grew to 27 acres in 2012 when a local fundraising initiative helped LTC acquire adjacent acreage to create the Waubun Preserve.



**Directions:** From downtown Indian River, travel 2 miles north on M-27 and turn left on Waubun Road. Travel one mile to the intersection of Waubun Road and Waubun Beach Road. Turn right (north) onto Chippewa Beach Road. The property is on both sides. Park along the side of the road.

CHEBOYGAN COUNTY  
**Barbara C. Hoffus**

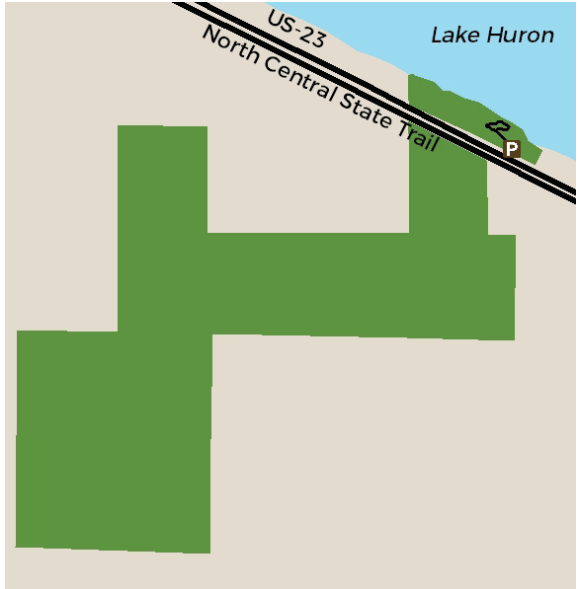
**Size:** 374 acres

**Frontage:** 2,000 feet along Lake Huron and along US-23.

**Land Description:** The preserve includes 2,000 feet along Lake Huron and lies along US-23 between Cheboygan and Mackinaw City. The majority of it is wooded uplands and occasional wetlands. Bluff to water is steep.

**Trails:** A short (less than half a mile) trail takes you from the parking area down to the Lake Huron shore. The paved North Central State Trail cuts through this preserve as it parallels US-23.

**History:** The majority of this preserve was donated in 2016 by Dirk Hoffus and is named after his mother. A small but significant shoreline addition was purchased in 2017.



**Directions:** From the intersection of US-27 and US-23 in Cheboygan, head northeast on US-23 for 7.3 miles and look for the preserve sign on the right. From Mackinaw City, the preserve can also be found just under 8 miles southeast of town along US-23.



CHEBOYGAN COUNTY  
**Reed's Pigeon River**

**Size:** 110 acres

**Frontage:** A mile along the Pigeon River

**Land Description:**

Property is a mix of wooded and open terrain that has been managed to encourage wildlife.

**Trails:**

Roughly 1¼ miles of trails. Kayaking or canoeing require a short portage, but this preserve can be a drop off or take out point along the Pigeon River.

**History:** Donated by Lois Ann Reed in 2007.



Marna Olson



**Directions:** From Indian River, head east on M-68 six miles to Afton Road and turn right. Continue on Afton Road south for three miles. Turn left onto Pigeon River Road. The preserve will be approximately half a mile down on your right with rustic parking.





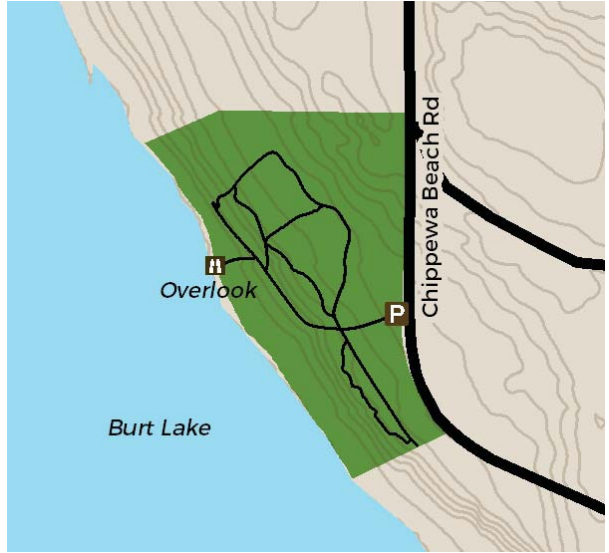
CHEBOYGAN COUNTY  
**Seven Springs**

**Size:** 65 acres

**Frontage:** 2,800 feet  
along Burt Lake

**Land Description:**

Numerous springs along the shore provide habitat for endangered species. Beautiful upland forest graces this preserve's upper portions while dense forested wetlands can be found below the dramatic bluff that runs across the property just back from the water's edge. The wave-swept shore consists of cobble beaches and beds of emergent rushes providing good habitat for fish and other aquatic life.



**Trails:** A local favorite for great views and light hiking. The parking area leads to 1.2 miles of trails and a lake overlook.

**History:** The Conservancy acknowledges the Harris and Weiss families of Columbus Beach who initiated this land's protection. These families partnered to fund its purchase, and coordinate fundraising efforts which brought additional support from Columbus Beach families and many Burt Lake residents and resorters.



**Directions:** From Hwy.27/75 in Indian River, turn west onto Prospect Road, just north of the bridge. Continue straight onto Chippewa Beach Road 1.1 miles which curves north. Look for the preserve sign about ¼ mile past the curve.

