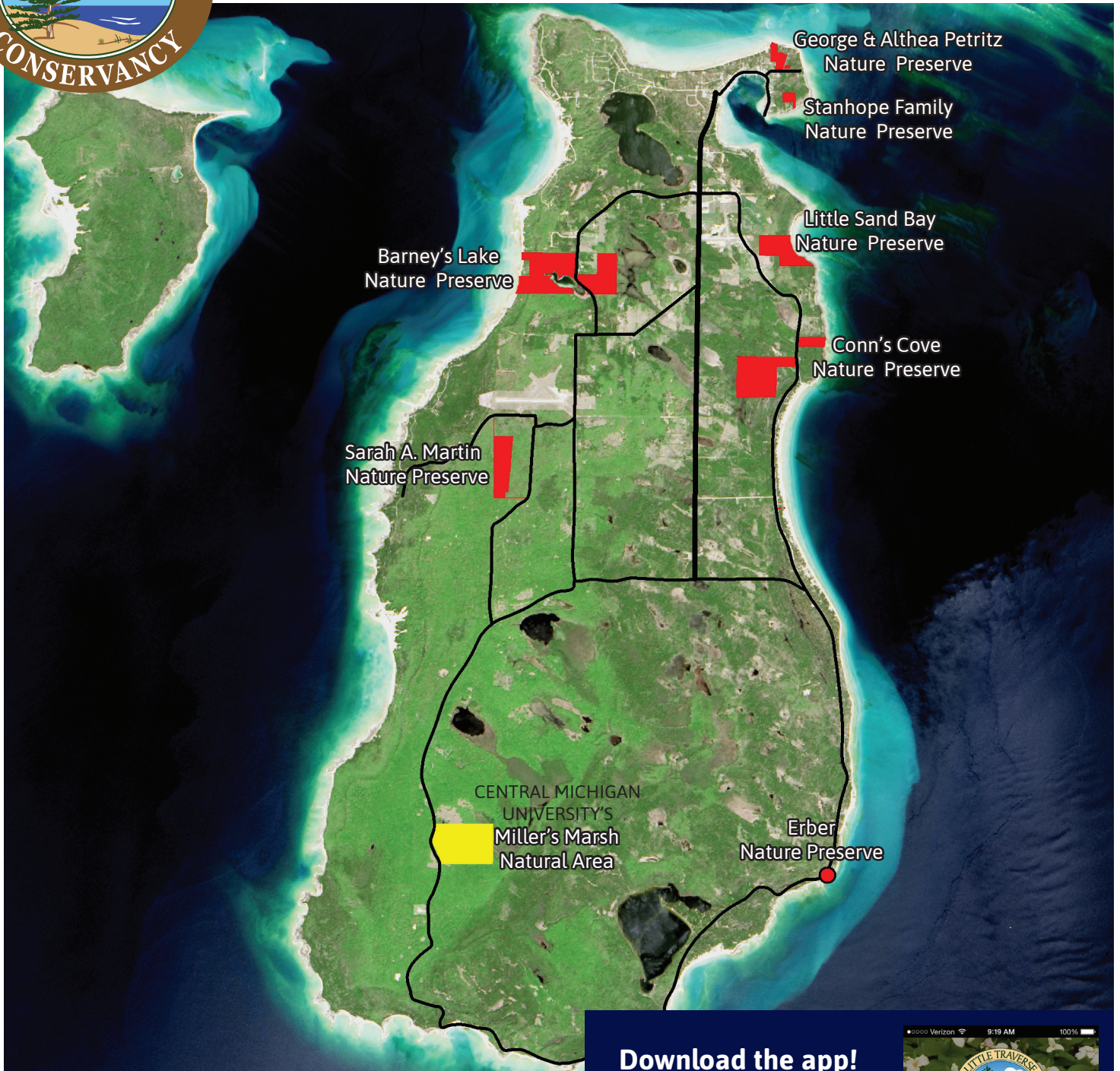




LITTLE TRAVERSE CONSERVANCY'S

Beaver Island Nature Preserves & Trails



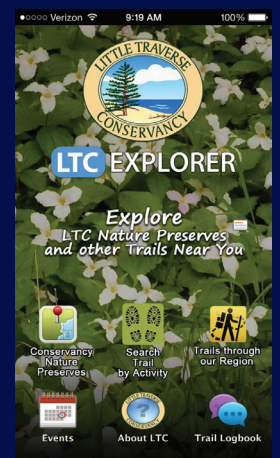
Since 1991 Little Traverse Conservancy has been working with the people of Beaver Island to conserve some of the most ecologically-significant island lands. Many privately-owned lands are now protected from future development with conservation easements. In addition, nearly 800 acres are available for public enjoyment as nature preserves or natural areas, as highlighted on this flyer. Those preserves described on the back include trails that are most conducive for hiking and similar activities.

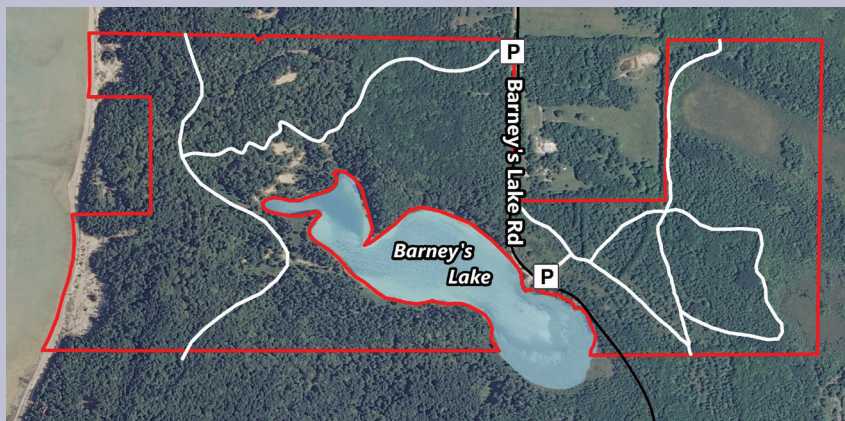
LITTLE TRAVERSE CONSERVANCY - 3264 Powell Road
Harbor Springs, MI 49740 - 231.347.0991 - www.landtrust.org

Download the app!

Our free nature preserve app provides users with accurate, detailed, and interactive maps and information about LTC preserves that are best suited for outdoor recreation.

The app is available on both Google Play and the Apple App Store by searching "LTC Explorer."





Barney's Lake Nature Preserve

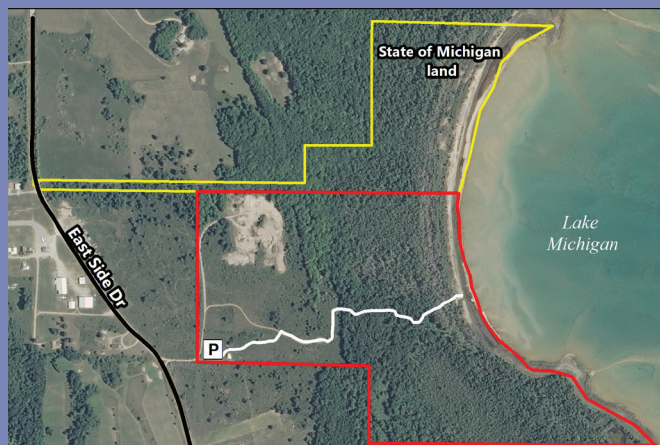
The original 120-acre preserve was a gift to the Little Traverse Conservancy in 1990 by the heirs of Bernard and Margaret O'Donnell. Located about three miles southwest of St. James, the old O'Donnell homesite is east of the lake across from the lake viewing/access area. Once cleared fields are now a study in plant succession. Stones are piled along the old field and pasture boundaries. Wildlife commonly seen in the area include loon, great blue heron, whitetail deer, beaver, and snowshoe hare. Recently, this preserve has grown to 337 acres, 4,900 feet of Barney's Lake frontage, and 1,770 feet of Lake Michigan frontage. Features include open bog, sedge meadow, cedar swamp, and uplands with old logging trails that allow for hiking and exploring. Significant improvements include boat racks and roughly three mile of trails.

From St. James, take Kings Hwy. south $1\frac{1}{4}$ miles to Barney's Lake Rd. North and turn right. Go $2\frac{1}{2}$ miles and the preserve can be found on both sides of the road. Look for a preserve sign on the left. Parking is on the right.

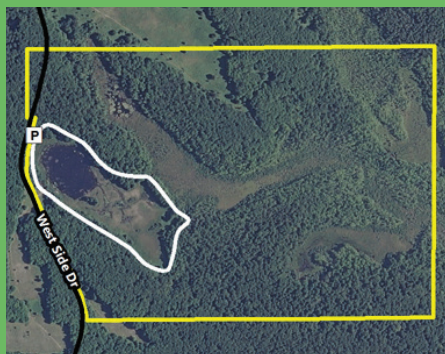
Little Sand Bay Nature Preserve

Designated by a group of island residents as the number one priority for acquisition and preservation, the Conservancy purchased the original 60 acres in 1994. In 1999, LTC assisted the state in acquiring 30 acres to the north. And in 2011, LTC purchased a 28-acre addition to the preserve with funds from the J.A. Woollam Foundation. The preserve includes a mix of shrubs, cedar swamp, and sand dunes. A short trail (.4 mile) and foot bridges allow visitors to access the shore without damaging the sensitive habitat. When added with adjacent state land, nearly $1\frac{1}{2}$ miles of Lake Michigan shoreline and a shallow swimming beach are now accessible.

From the Welke's Airport, go south on East Side Dr. for approximately 200 yards. Look for a sign on the left side of the road.



CENTRAL MICHIGAN UNIVERSITY'S Miller's Marsh Natural Area



Purchased by Little Traverse Conservancy in 1997, this property was conveyed to Central Michigan University Biological Station in 1998. The 230-acre preserve consists of a large marsh containing floating aquatic plants, a sphagnum mat with water-tolerant shrubs, open fields to the north, and a mature northern mesic forest of mostly sugar maple and American beech throughout the preserve. There is an active beaver dam on the northeast shore of the marsh, and midland painted turtles can be observed sunning themselves on partially submerged logs. A one-mile loop trail passing through a variety of habitats circles the marsh.

From St. James, take the King's Hwy. south for 4 miles. Turn right (west) onto Paid Een Ogs Rd. Continue about $1\frac{1}{2}$ miles. At the four corners and airport turn left (south) onto West Side Dr. Continue on West Side Dr. approximately five miles to Miller's Marsh which will be on the left (east) side of the road.



KEY

- Bicycling
- Canoeing/Kayaking
- Fishing
- Horseback Riding
- Birding Trail
- Swimming Beach

George & Althea Petritz Nature Preserve

At the northeast end of Beaver Island, this preserve is walking distance from town. A trail takes you through the $28\frac{1}{2}$ acres to 500 feet of gorgeous Lake Michigan beach. The donor wrote: "People, animals, plants, and trees allowed. All other human-made structures or objects prohibited. I would like it to remain a place to quietly appreciate nature."

From St. James, take Main Street .7 mile north out of town. Turn left onto Lake Drive and travel .2 mile to the preserve sign on your left.



Remember to download the smart phone app (over) or visit our website for interactive maps:
www.landtrust.org

PROTECTING
THE NORTH
COUNTRY
WE ALL LOVE