



50TH ANNIVERSARY EDITION

Trail & Water Access Guide



2022 EDITION

Little Traverse Conservancy's Guide to Trails and Water Access

This special 50th anniversary edition is dedicated to Little Traverse Conservancy's long-time Associate Director, Tom Lagerstrom. Tom began working part-time with LTC in 1984, quickly becoming an indispensable part of moving the organization forward. While often the quiet, behind the scenes sort of person, Tom has (and in many ways, remains) the steady force that has guided LTC from a fledgling non-profit to an established community institution. From his vigilance over the books and membership program to his multi-skilled ability to fill in where a need arose, Tom's calm "get it done" work ethic has been admired and appreciated by all who have worked beside him.

Thank you, Tom!



All nature preserves and working forest reserves are open to the public.* In this edition, we highlight lands with parking areas and trails, or lands that provide public access to a significant water body. In addition, we feature partner projects that provide similar features.

Little Traverse Conservancy has worked with landowners to protect hundreds of additional preserves and reserves that do not have trails, parking areas, or easy access to the water, yet are still open for you to explore. All told, LTC owns and manages more than 24,000 acres in nature preserves and reserves (2022). A list of these is found at the end of each county in the booklet, and these lands are also visible on our interactive map at www.landtrust.org.

As you journey around northern Michigan, please know that just as many acres of private land (more than 24,000 acres) are protected with conservation easements. While a conservation easement does not make the land available to the public, it is a legally-binding agreement that ensures the perpetual protection of scenic and natural features such as beautiful roadside views, important wildlife habitat, scenic and productive farm land, and more.

**A working forest reserve has, will, or may be actively managed for timber production. Forest health, wildlife habitat, and public access are always shared goals, along with timber goals.*

This book may be out of date — and that's a good thing!

printing date: May, 2022

Cover image: Boyd B. Banwell Nature Preserve/Cheboygan County

Right image: Seberon "Boo" Litzenburger Nature Preserve/Emmet County (Todd Parker)



The mission of the Little Traverse Conservancy is to protect the natural diversity and beauty of northern Michigan by preserving significant land and scenic areas, and fostering appreciation and understanding of the environment.

Guidelines

Little Traverse Conservancy works hard to balance public use on our lands with protection for future generations. Recreational, educational, and scientific use of the preserves and reserves is encouraged, as long as it does not interfere with primary protection goals. We welcome you to explore and enjoy these beautiful lands, keeping in mind that you are a temporary visitor to the homes of many plants and animals.

Please enjoy hiking, birdwatching, cross-country skiing, snowshoeing, fishing, and similar low-impact activities. Many of the properties include water frontage and one could easily canoe or kayak these, but most will require a portage to the water.

Please refrain from camping, fires, dumping or littering, removal of vegetation, off-road vehicles, and snowmobiling.

Please remember:










- Hunting is allowed on designated lands with written permission and at no cost. Visit www.landtrust.org or call 231.347.0991 for information to quickly and easily obtain permission.

All dogs must be on a leash when visiting preserves.

Visit www.landtrust.org for an interactive map of LTC preserves & reserves!

Key

All trails featured on this map are suitable for hiking, birdwatching, and similar activities. Parking is available with either a formal parking area or a safe pull off. The following icons highlight activities suited for each property.

-  Bicycling
-  Canoeing or Kayaking
-  Fishing
-  Horseback riding
-  Hunting - Requires written permission. Visit www.landtrust.org for details and registration.
-  Located on an official Birding Trail
-  Trails are often groomed for skiing and snowshoeing
-  Swimming
-  Dogs not allowed

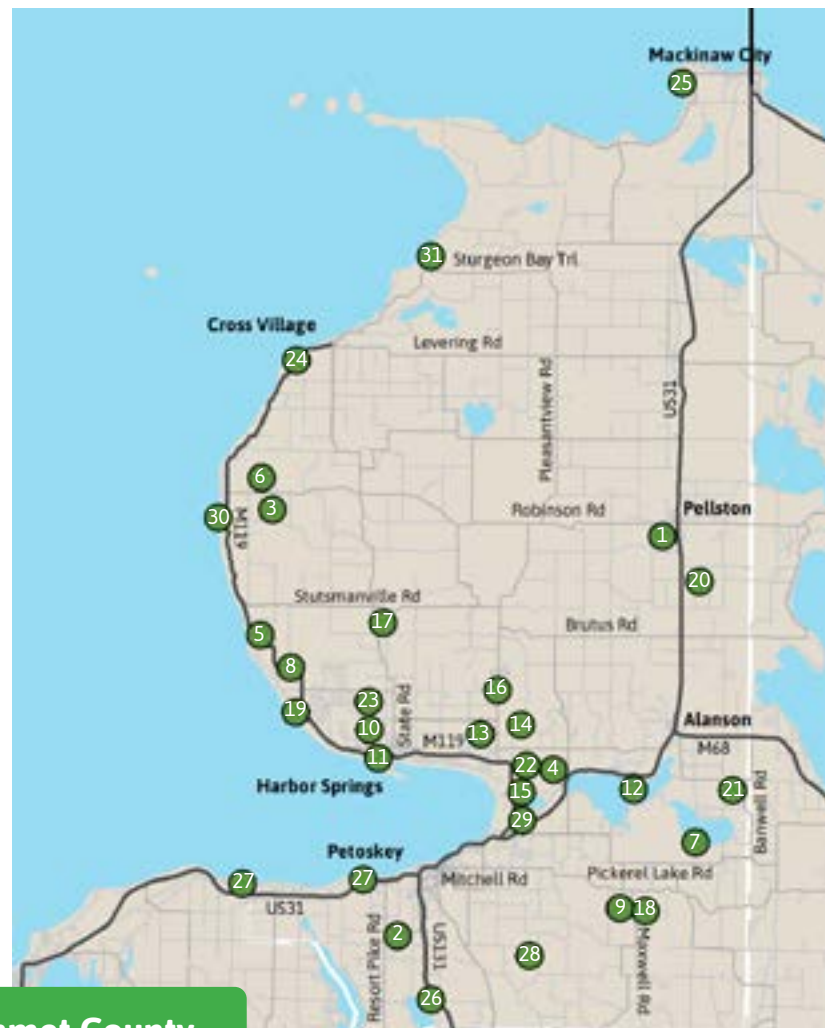
Please help us care for these trails and lands!

Preserves and trails require a good deal of management and maintenance and we greatly appreciate the many individuals who help.

Interested in volunteering?

Fill out our volunteer form at www.landtrust.org or email: cacia@landtrust.org.

NOTE: Those parks or natural areas established with help from the Conservancy (but not under Conservancy ownership) are identified in this guide. Please refer to the rules and regulations of the appropriate authorities when visiting them.



Emmet County

	page		
1 Philip J. Braun.....	6	17 Stutsmanville Bog/C. Beach Day.....	22
2 Bubbling Springs/Robinson.....	7	18 Tanton Family.....	23
3 Goodhart Farms.....	8	19 Thorne Swift.....	24
4 Hailand/Helstrom.....	9	20 Uh-ni-nah-tig ziibing/Hutto.....	25
5 Hoogland Family.....	10	21 Waldron Fen.....	26
6 Elmer Johnston.....	11	22 Watson/Schott.....	27
7 Ray Johnston.....	12	23 Consuelo Diane & Charles L. Wilson Jr.....	28
8 Seberon "Boo" Litzenburger.....	13	24 Woollam Family.....	29
9 Allan and Virginia McCune.....	14		
10 Morris-de la Vergne and Luetjohann-Garver.....	15		
11 Naas, Mauger, Raunecker, Leslie.....	16		
12 Oden Island.....	17		
13 Offield Family.....	18		
14 Offield Family Viewlands.....	19		
15 Round Lake.....	20		
16 Sally Stebbins.....	21		

FEATURED TRANSFER/ASSIST PROJECTS

25 The Headlands.....	30
26 Jones Landing.....	31
27 Resort Township's East and West Parks.....	32
28 Skyline Trail.....	33
29 Spring Lake Park.....	34
30 St. Ignatius Beach.....	35
31 Sturgeon Bay Dunes.....	36

Other Preserves & Reserves.....37

EMMET COUNTY
Philip J. Braun Nature Preserve

Size: 125 acres

Frontage: 4,500 feet along the Maple River.

Land Description:

The uplands of this property are primarily hardwood and aspen with some red and white pine scattered throughout. Mixed conifer species dominate the lowland areas and riparian corridor. Several large planted "wildlife openings" are established on the upland areas, and recent timber management is evidenced by the regenerating aspen in the southern half of the property. This preserve is adjacent to the Pellston Pioneer Park and state land.

Trails: A short trail meanders from the parking area to the river.

History: Donated in 2011 by the J.A. Woollam Foundation in honor of a family friend who loved to fish the Maple River.



Directions:
From the intersection of US-31 and Robinson Road on the south end of Pellston, turn west on Robinson Road. The preserve entrance is a quarter mile down on the south (left) side, immediately after crossing the Maple River bridge.



Todd Parker

EMMET COUNTY
**Bubbling Springs/
Robinson Honoring Gold Star Families Nature Preserves**

Size: 20 acres total

- Bubbling Springs: 15 acres
- Robinson: 5 acres

Land Description:

Close to Petoskey, this preserve offers a short trail and natural oasis for exploration. Enjoy a mix of mature upland hardwood forest and a swampy corridor with a small stream, while searching for the natural springs.

Trails: A small parking area and short trail lead towards the springs portion of the preserve, looping through an upland forest.

History: The Bubbling Springs Nature Preserve was donated in 2008 by Jay and Clem O'Neil. In 2021, the 5-acre Robinson Nature Preserve Honoring Gold Star Families was created with a donation from Mark and Michelle Melvin. This preserve honors the family of fallen Navy Seal and Petoskey native Heath Robinson, as well as all families who have lost someone in military service.



Directions:

From the intersection of US-31 and US-131 in Petoskey, travel south on US-131 1½ miles to Intertown Rd. Turn right (west) on Intertown and travel 1.1 miles to the preserve complex entrance on the left (south) side of the road.



Goodhart Farms Nature Preserve

Size: 696 acres

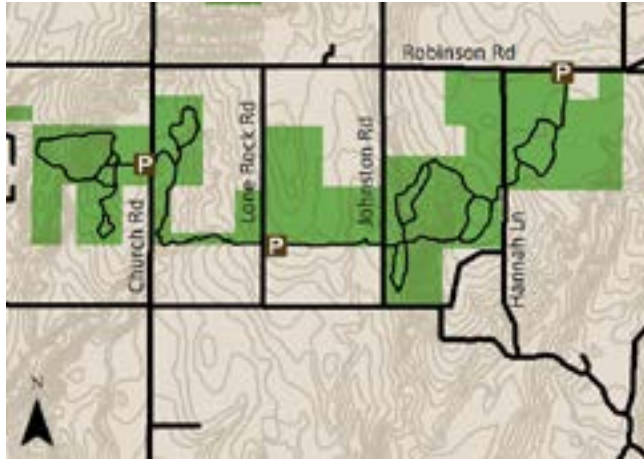
Land Description:

The Goodhart Farms Preserve is a mix of meadows, hay fields, and hardwood forest. Old orchards and pine plantations are found on the property, and the rolling scenic fields offer views of Lake Michigan.

Trails: Three parking areas are available offering access to 6½ miles of marked trails

that are ideal for hiking, horseback riding, snowshoeing, and cross country skiing (3½ miles are groomed in winter). Note: The Lone Rock Road parking is best suited for horse trailers.

History: In 1994, Ed and Maureen Mayne purchased the farm from the estate of John Hannah, former president of Michigan State University. Hannah had been purchasing and piecing together small farms since the 1950s, using the land for his own cattle herd and for agricultural research through the University. Upon their purchase, the Maynes raised premium, high quality hay sent to the southern states for race horses. In late 2002, Ed and Maureen donated the Goodhart Farms land and associated buildings and equipment to Little Traverse Conservancy, with the buildings and equipment later sold. It was the single largest donation ever given to the organization at that time. Several additions to the preserve have been made since the original donation.



Directions: From Harbor Springs, take State Road north 9 miles to Robinson Road. Turn left (west) on Robinson and travel 3½ miles to the primary parking area. Additional parking is available along Lone Rock and Church Roads.



Sally & Art Hailand Jr./Helstrom Family Nature Preserves

Size: 90 acres total

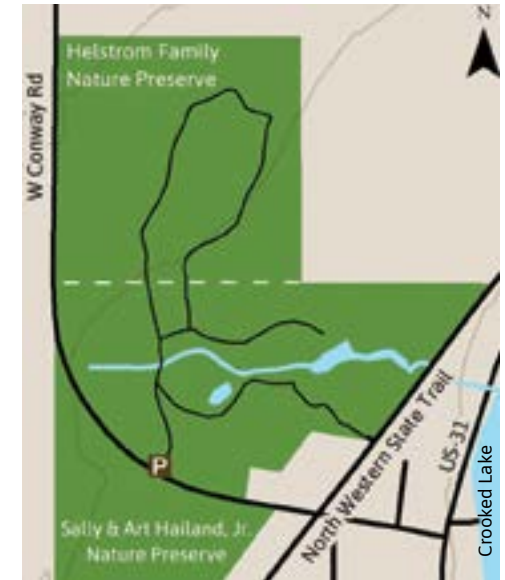
- Hailand: 50 acre

- Helstrom: 40 acres

Land Description/Trails:

A roughly 1½ mile trail system takes you through both of these preserves. The ponds on the Hailand Preserve drain to Crooked Lake emptying to the east on the other side of US-31. The paved North Western State Trail follows the northeastern boundary of the Hailand Preserve.

History: The Sally & Art Hailand, Jr. Nature Preserve was purchased in 2007 with primary funding from the Hailand Family. In 2012, funds from the John J. Helstrom Memorial Fund were donated to create the Helstrom Family Preserve in memory of Mathias and Esther Helstrom. Access to these preserves is available from two locations.



Directions: At the stop light intersection of Conway and US-31 north of Petoskey, turn left onto West Conway Road. In .2 miles, look for a sign and parking on the right. You can also access the trail from the paved North Western State Trail. From the fountain along W. Conway Road, walk north on the NWST about a hundred yards to access the preserves on the left.



EMMET COUNTY Hoogland Family Nature Preserve

Size: 74 acres

Frontage: Nearly 3,000 feet along Scenic Heritage Route M-119, also known as the Tunnel of Trees

Land Description: From the parking area, this preserve complex starts on level ground, rising to rolling ridges to the east. The forest is dominated by large red oak, and includes the classic maple/beech northern upland forest that typifies northwestern Emmet County. In late spring, the woods are dotted with trillium, trout lily, spring beauty, and other spring ephemerals.

Trail: 1½ mile loop

History: This land was donated by the Hoogland Family Foundation in 2016. The complex lies just above the Lake Michigan shore in a region that has experienced rapid growth.



Directions: From Harbor Springs, drive north on M-119 for 7.7 miles. At the base of the big hill you have just descended, you will turn a fairly sharp corner headed north and the parking area will quickly be visible on the right. Look for a small parking area and logo sign.



Photos by The Wandering Fawn

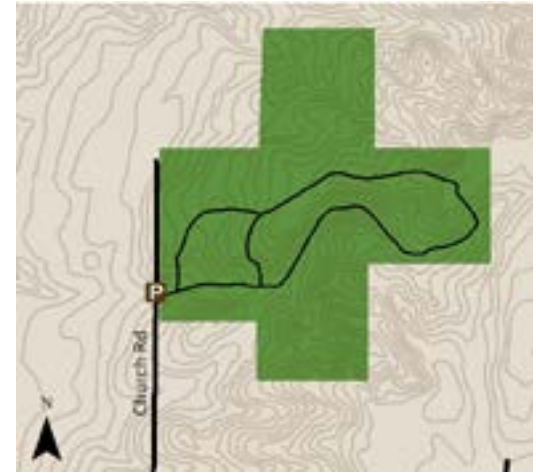
EMMET COUNTY Elmer Johnston Nature Preserve

Size: 220 acres

Land Description: A mix of meadowlands and rolling hardwood forest dominated by beech, sugar maple, and red oak. The hilltops offer magnificent views of Lake Michigan and Beaver Island.

Trails: Featuring almost two miles of trails, this preserve is located within ½ mile of the Goodhart Farms Preserve. It is a local favorite for hiking and snowshoeing/skiing.

History: Once tilled farmland and more recently used as pasture. Mrs. Elmer Johnston donated the property in memory of her husband in 1982.



Directions: From Harbor Springs, take State Road 9 miles north to Robinson Road. Turn left (west) on Robinson and travel 4 miles to Church Road. Turn right (north) on Church and travel ½ mile to the preserve parking on the right.



EMMET COUNTY Ray Johnston Nature Preserve

Size: 52 acres

Frontage: 82 feet on Pickerel Lake

Land Description: This land includes upland forested hardwoods dropping down to forested wetlands in the northwest corner. A steep bluff created by post-glacial Lake Algonquin runs along the north and east parts of the property.

Trails: More than one mile of trails are available, with a public boat launch and beach nearby.

History: Purchased in 2005, this preserve helps protect the Inland Waterway/Cheboygan River watershed.



Todd Parker

Directions: From the intersection of M-119 and US-31 on the north end of Petoskey, follow US-31 ½ mile to Pickerel Lake Road. Turn right and follow Pickerel Lake Road for approximately 7½ miles (the road has several confusing turns at intersections, so watch the road signs). Turn left on Ellsworth Road, go about one mile, and turn left on Artesian Lane. Look for parking area and preserve sign.



EMMET COUNTY Seberon "Boo" Litzenburger Nature Preserve

Size: 40 acres

Frontage: 1,240 feet on Five Mile Creek

Land Description: In addition to the creek, this beautiful preserve includes fallow field, cedar swamp, and a transitional forest that lies above the creek. This preserve is part of the Five Mile Creek Management Area, but trails are only found on this preserve.

Trails: A parking area is located off of Five Mile Creek Road with a one mile trail winding to an overlook and over a bridge crossing the creek.

History: In 2021, the preserve was funded by Liesel and Hank Meijer in memory of Liesel and Gow Litzenburger's father and LTC co-founder Seberon "Boo" Litzenburger. Once the site of an old general store, the remnants of a mill pond can still be found. These lands drain into Five Mile Creek which empties into Little Traverse Bay/Lake Michigan, thereby contributing to the health of a Great Lake.



Directions From Harbor Springs, travel north on M-119 approximately 6 miles and turn right on Five Mile Creek Road (first right after Pond Hill Farm). Preserve parking area is just ahead on your right.



Allan and Virginia McCune Nature Preserve



Size: 172 acres

Frontage: 3,400 feet on Minnehaha Creek

Land Description: Dominated by hardwood forest, the land includes red pine plantations, meadow, creek, and cedar swamp. The spring-fed Minnehaha Creek, which provides fish and wildlife habitat, flows through the preserve on its way to Crooked Lake.

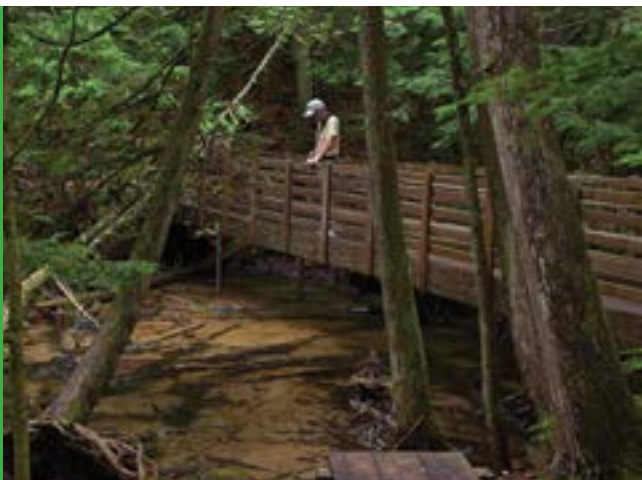
Trails: Two parking areas are available. A trail system offers roughly 3½ miles to explore.

History: This beautiful property was donated to Little Traverse Conservancy in 1984 by Allan and Virginia McCune of Petoskey. The trails were dedicated to Allan Purchis whose family homesteaded the land. An addition to the preserve was donated by the Purchis family in 2017. A replacement footbridge was constructed in 1997 across the east branch of the creek with funds from the Petoskey-Harbor Springs Area Community Foundation in memory of Ellen Pray Bondy. A second footbridge and parking area were constructed in 2015 with another community foundation grant and significant volunteer support from the Petoskey Home Builder's Association and in memory of Sandy Wagar. This preserve is located across Maxwell Road from the Tanton Family Working Forest Reserve.



Directions:

From Petoskey, take Mitchell Road east 6.25 miles to Berger Road. Turn right and go .7 mile to a parking area on the left. Further south, additional parking is found .7 mile down Maxwell Road, when turning off of Mitchell Road.



TMPetersen

Morris-de la Vergne and Luettjohann-Garver Nature Preserves

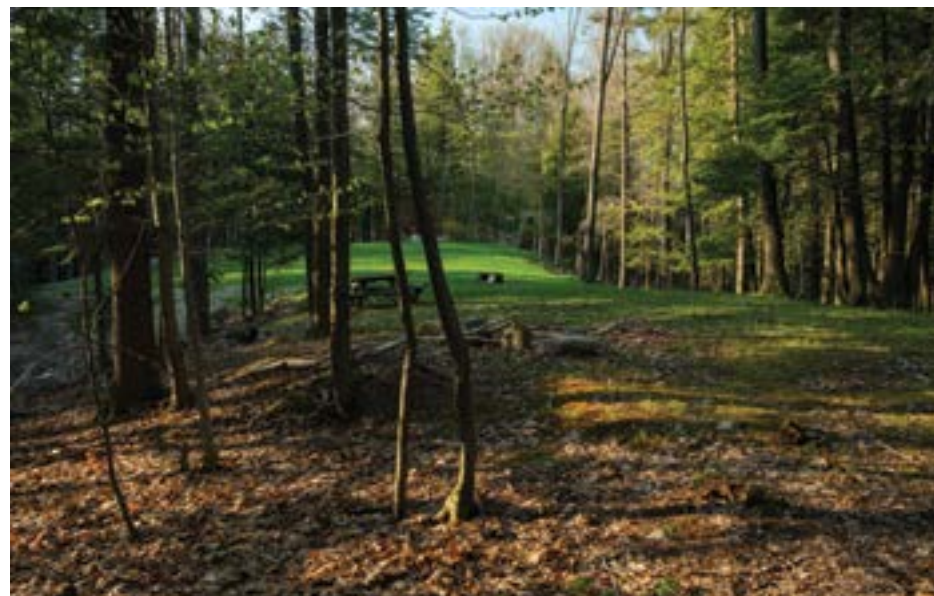


Size: 30 acres combined

Land Description: Located just a mile north of downtown Harbor Springs, this neighborhood preserve includes a short trail system that takes you through a beautiful forest dominated by hemlocks.

Trails: Less than a mile round trip.

History: The Morris-de la Vergne and Luettjohann-Garver Nature Preserve Complex consists of two nature preserves named in honor of the families of Kim Luettjohann Morris and Bill Morris and their shared love of the land. These nature preserves were created in 2018.



Directions: From the intersection of Lake Street and State Road just north of downtown Harbor Springs, follow State Road north for ½ mile to Hughston Road. Turn left on Hughston and travel just over a mile to the preserve on your left.



Bow only

Naas, Mauger, Raunecker, and Leslie Nature Preserves

Size: 47 acres combined
 - Naas/Mauger/Raunecker: 40
 - Leslie: 7

Land Description: A mixed conifer-deciduous forest and cedar swamp with springs and a small pond. This complex of preserves is found just a few blocks west of downtown Harbor Springs.

Trails: A flat, easy trail that includes boardwalk over wet areas and connects local roads for neighborhood pathways.

History: The Naas, Mauger, and Raunecker Preserve was donated in the late 1980s by the Naas and Mauger families in memory of Richard H. and Lydia Naas Raunecker. The original Leslie Preserve was donated by Mr. and Mrs. Gaylord Leslie in 1981. A small addition to the Leslie Preserve was donated anonymously in 2005.



Merlin/Darrell Lawson



Directions: From Main Street in downtown Harbor Springs, travel west past Holy Childhood Church until the road dead ends on Traverse Street. Take a right and travel four blocks to Fourth Street. Turn left and the preserve entrance is about ¼ mile on the left. The trail will cross Second Street and pick up again to take you to the Leslie Preserve and over to Glenn Drive.



Oden Island Nature Preserve

Size: 50 acres

Frontage: One mile on Crooked Lake

Land Description: This preserve features beautiful large old-growth hemlocks and fragile wetlands.

Trails: Approximately one mile of foot trails skirt the island's eastern perimeter. Look for two benches along the way for enjoying lakeside views.

History: A successful fundraising effort in 2000 resulted in the Conservancy's purchase of this large, undeveloped waterfront property. The purchase closed the door on a controversial 34-unit subdivision proposed for the site. Now the preserve helps maintain the water quality of Crooked Lake which lies near the upper portion of the Inland Waterway, a 40-mile navigable waterway that boaters can take all the way into Lake Huron at Cheboygan.

The protection of this property was an ideal example of a community coming together. A window of only three months was available to raise almost \$1 million for the purchase. The result was an outpouring of support from many individuals, a family foundation, the lake association, and Littlefield Township.

Directions: From Petoskey, take US-31 north ¾ miles to Pickerel Lake Road. Turn right and follow for four miles until Pickerel turns into Channel Road. Follow Channel Road 1 mile to Oden Island Road and turn left. Once on the island, turn right on Leeward Drive and go to the end until you see the Conservancy logo sign.



TMPetersen



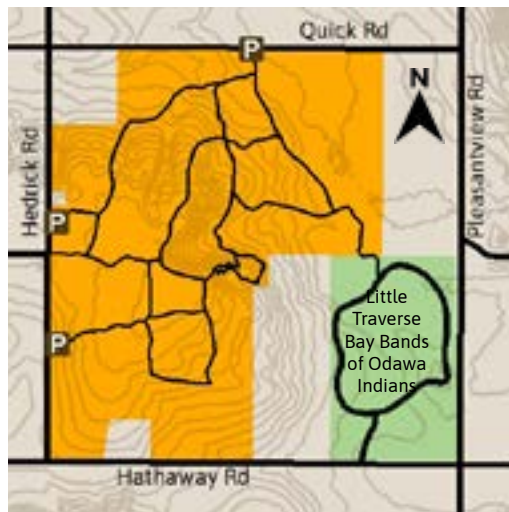
EMMET COUNTY Offield Family Working Forest Reserve

Size: 390 acres

Land Description: Just a few miles from downtown Harbor Springs, this reserve has become a favorite community destination for hiking, dog walking (on leash), and environmental education classes. A mix of open meadows and forested hilly woods are found. Seasonal ponds known as “vernal pools” are especially common in spring and are studied by local students.

Trails: More than five miles of trails cross through the hills and fields here. The largest parking areas are off Quick Road and the northern Hedrick Road location.

History: Purchased in 2009 in large part with a grant from the Offield Family Foundation. Sustainable forestry practices have been done on this land for decades to improve forest health and help curb disease. This has included graduate student research.



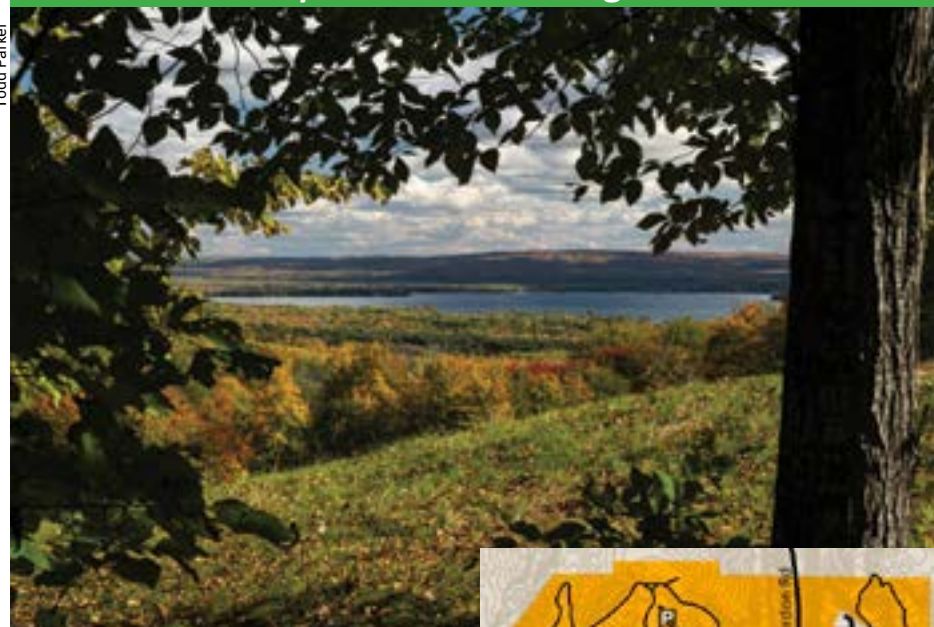
Directions: At the M-119 light near the Harbor Springs airport, turn north on Pleasantview Road and travel 1½ miles to Quick Road. Turn left on Quick and travel ½ mile to this primary parking area on the left.



Ray Gaynor

EMMET COUNTY Offield Family Viewlands Working Forest Reserve

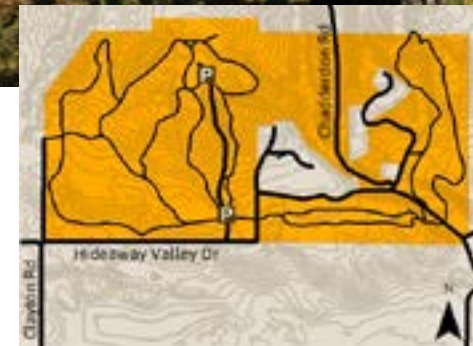
Todd Parker



Size: 280 acres

Land Description: This hilly land includes a mix of hardwood forests and old golf greens that are being restored to native meadows and forests. A pond is found near the main entrance.

Trails: More than 4.5 miles total with some very steep terrain. From the top of the driveway near the old clubhouse, the trails follow meandering old golf cart paths. Beautiful old trees, winding paths, and breathtaking views are the highlighted features of



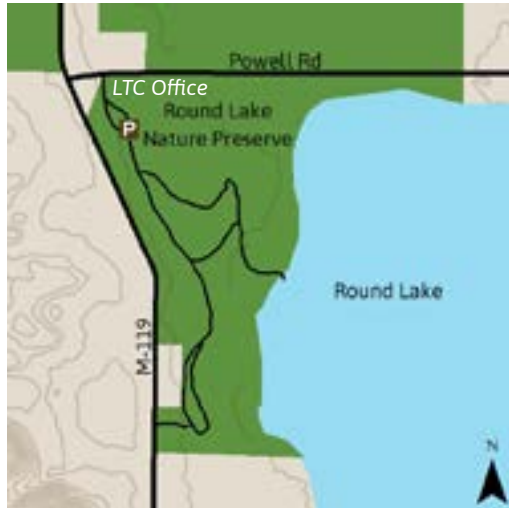
this property. Scenic views of Little Traverse Bay and the Inland Waterway are available from different locations along the trails. The land is an excellent location for night sky viewing.

History: Formerly known as the Little Traverse Bay Golf Club, this property was an active golf course through the 2019 season. In early 2020, it was purchased by an investor who then agreed to sell it to Little Traverse Conservancy to ensure its long-term protection. A lead donation from the Offield Family Foundation along with nearly 200 donors made the purchase possible.

Directions: From the M-119/West Conway Road intersection near the Harbor Springs Airport, head east on West Conway Road. Take the next left onto Clayton Road. Continue on Clayton roughly half a mile, past Hathaway Road. Take a right on Hideaway Valley Drive and travel a quarter-mile. The entrance is on your left.



EMMET COUNTY
Round Lake Nature Preserve



Size: 58 Acres

Frontage: 2,500 feet on Round Lake

Land Description: Vegetation includes mixed hardwoods and conifer forest, lowland cedar swamp, and marshlands along the lake.

Trails: Parking is at the Conservancy office. Easy trails cover almost one mile and include a lake overlook.

History: This land was once used by Native Americans to access the Inland Water Route, sometimes portaging from Little Traverse Bay to travel across the state to Lake Huron. This waterway courses 40 miles through several lakes and streams, eventually emptying into Lake Huron in Cheboygan. The original 40-acre preserve was donated by the Wrigley Offield Family in 1980 with additional acreage purchased and then donated in 1984-86 by the L'Arbre Croche Association.

This preserve is often used by school groups for environmental education programs. Improved boardwalk, signs, and an overlook platform were completed in 2017 with a grant from the Petoskey-Harbor Springs Area Community Foundation and many volunteers.

Directions: From US-31 in Petoskey, take M-119 about 1½ miles north to Powell Road. Turn right on Powell and take the first driveway on the right, which is the entrance to the Little Traverse Conservancy office. The trailhead is directly off of the parking area.



Todd Parker



TMPetersen

EMMET COUNTY
Sally Stebbins Nature Preserve



Size: 28 acres

Land Description: Located along Highland Pike Road, this preserve is nestled between Nub's Nob and Boyne Highlands and includes both open field and rolling northern hardwoods.

Trails: Less than one mile of trail meanders through the center of this preserve. Gifts made in memory of Sally were used to purchase a bench that now sits near the trailhead.

History: This beautiful preserve was donated by Kenyon Stebbins in 2016 in memory of his wife Sally Stebbins, a true lover of the natural world who found a particular joy in birding. She was beloved by so many, and numerous friends and family contributed to the acquisition of this preserve and its long-term care. **NOTE:** Because Sally cared so much for the well-being of the birds and wild things, *this preserve does not allow smoking, dogs, horses, or wheeled vehicles (including bicycles).*



Directions: From the Harbor Springs airport, head north on Pleasantview Road almost three miles and turn left on Highland Pike Road where Teddy Griffin's Roadhouse is located. Travel about ¼ mile to the preserve entrance on your left.



Stutsmanville Bog/C. Beach Day Nature Preserves

Size: 99 acres total
 - Stutsmanville Bog: 111 acres
 - C. Beach Day & Family 34 acres

Land Description: One of the best examples of a fen or peatland bog in northern Michigan.

Trails: A ¼ mile trail leads to the bog overlook and interpretive signs.

History: In 1999, the Conservancy purchased the original piece of this beautiful bog, an area that has been the subject of many ecological studies. The acquisition was made possible, in part, by a bargain sale from the sellers and with funds from the family of Julia Wells Terry. The adjacent C. Beach Day & Family Nature Preserve was created in 2017 with a lead gift from Trudy Day in memory of her husband.

NOTE: A bog is a unique type of wetland dominated by organic soil known as peat. Bogs are also known for unusual plants such as the carnivorous pitcher plant and sundew which receive their nutrients by entrapping and digesting insects! Wetlands are extremely important for filtering water that flows through them. Please be sensitive to the fragile nature of this ecosystem when visiting. Even sporadic foot traffic off the trails can permanently damage the vegetation.



Directions: From Harbor Springs, take State Road north approximately five miles. Look for the preserve signs and parking area on the right-hand side of the road.



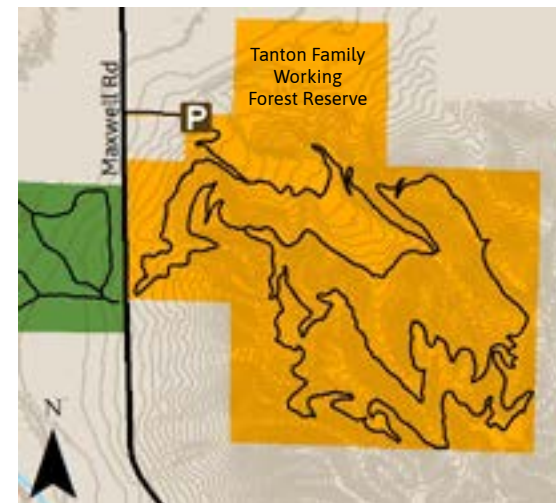
Tanton Family Working Forest Reserve

Size: 236 acres

Land Description: Formerly known as Christmas Mountain, the high point of this reserve — 1,300 feet — is just over 100 feet shy of the Nub's Nob ski resort's tallest point located a few miles to the northwest. From the top, views of Little Traverse Bay, Crooked Lake, and Pickerel Lake may be enjoyed when the trees have shed their leaves. Water flows through this land to the beautiful Minnehaha Creek and eventually arrives in Crooked Lake. From there, it flows through the nearly 40-mile Inland Waterway which empties into Lake Huron in Cheboygan.

Trails & Facilities: Nearly six miles of professionally-designed mountain bike trails feature three loops rated from Beginner to Expert. Trails are open for both biking and hiking, so users are asked to follow the recommended direction on posted signs. A changing station was added in late 2021.

History: This reserve was originally acquired in 2016 with a lead gift from John and Mary Lou Tanton. In 2019-2020, a joint fundraising effort between LTC and Top of Michigan Mountain Bike Association resulted in the creation of the professionally designed trails system completed in 2020.



Directions: From Petoskey, take Mitchell Road east approximately 7 miles. Turn south (right) onto Maxwell Road. Drive south ½ mile, and the parking area is on the left (east) side of Maxwell Road.



EMMET COUNTY
Thorne Swift Nature Preserve



Size: 30 acres

Frontage: 950 feet along Lake Michigan with 300 feet of beach open to the public

Land Description: A mix of upland dunes and lowland cedar swamp, small pond, and Great Lakes shoreline.

Trails & Facilities: A large parking area lies adjacent to the Elizabeth Kennedy Nature Center. A total of 1½ miles of trail, dune observation platform, pond observation platform, gazebo, amphitheater, and seasonal guided programs all make this an excellent family destination.

History: In 1981, Elizabeth Kennedy donated the Thorne Swift property to Little Traverse Conservancy. The Conservancy leases the property to West Traverse Township.

Thorne Swift is open daily 10 am to sunset from April 15-November 15. The Nature Center is open Memorial-Labor Day from 10am-7pm. Parking fee is waived for LTC members.

Call 231.526.6401 for current programs and extended seasonal hours.

PLEASE NOTE: Dogs and horses are not allowed at Thorne Swift.

Directions: From Harbor Springs, take M-119 northwest 3.8 miles to Lower Shore Drive. Follow Lower Shore Drive for ½ mile, looking for the preserve sign on the left.



Todd Parker

Todd Petersen

EMMET COUNTY
Uh-ni-nah-tig ziibing/Joan and John Hutto Nature Preserves

Size: 40 acres total

- Uh-ni-nah-tig ziibing: 40 acres
- Joan and John Hutto: .3 acre

Frontage: Nearly 3,000 feet of Maple River frontage.

Land Description: The combination of river, cedar-lined shores, upland hardwoods and pines make for an exceptionally beautiful place to visit.

Trails: Foot trails have been created along the river and old two tracks meander through the land.

History: In 2021, an access point to the Maple River that has been historically used by anglers and kayakers was donated to the Conservancy by John and Joan Hutto and is now named the Joan and John Hutto Nature Preserve. Also in that year, the Conservancy was able to secure a nearly adjacent 40 acres with funding from the J.A. Woollam Foundation. This gorgeous riverside preserve complex provides rare public access to this Emmet County treasure, the Maple River. Uh-ni-nah-tig ziibing means "Maple Tree River" in the Odawa language.

Directions: From Brutus, head north on US-31 one mile to Maple River Road and turn right. In half a mile turn left on Pine Trail Road. This dirt road will dead end at the preserves where you can park.



Waldron Fen Nature Preserve

Size: 148 acres

Frontage: Scenic frontage lies along Banwell, Haines, and Miller roads.

Land Description: Waldron Fen consists of a unique and sensitive wetland-fen complex, native grasslands, and associated forests. Unique habitat for at least 116 resident and migratory bird species, as well as deer, beaver, red fox, coyote, otter, mink, and more. Birders and naturalists visit each year to watch resident and migrating species.

Trails: Nearly two miles of trail take you along a small pond and the wetland-fen complex leading visitors through the many habitats. A covered picnic table is available near the parking area. In 2016, the overlook platform was rebuilt with help from volunteers and the Petoskey Area Audubon Society.

History: First protected with a conservation easement donated in 2001 by Nancy and Jack Waldron, Nancy donated the land to LTC in 2014 as a nature preserve. Grassland restorations begun by the Waldrons are being continued by LTC.

PLEASE NOTE: Dogs and horses are not allowed at Waldron Fen.

Directions: From Petoskey, head north on US-31 to Pickerel Lake Road. Follow it for 9½ miles to Banwell Road and turn left. Continue on Banwell 3.25 miles to the entrance on right. From Alanson, head east on M-68 to Banwell Road. Turn right. Continue on Banwell 3.3 miles to entrance on left.



Great horned owl/Darrell Lawson



Charles Dawley



Gary Osterbeck

Watson and Joseph J. Schott Nature Preserves

Size: 110 acres

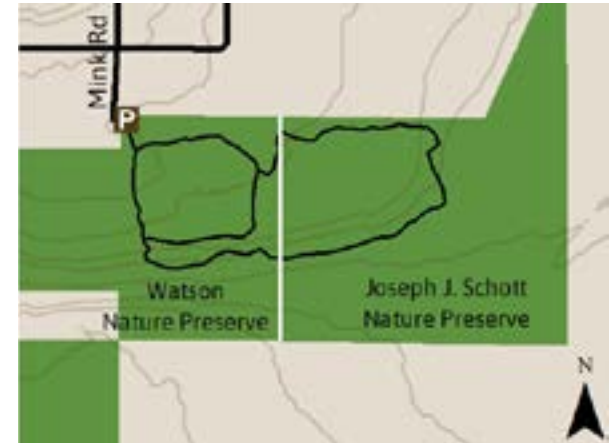
- Watson: 58 acres
- Schott: 52 acres

Frontage: 360 feet of scenic frontage along M-119.

Land Description: Upland mixed hardwood forest including red oak, maple, ash and scattered white pine and hemlock.

Trails: An approximately mile-long trail loop spans both properties.

History: The original Watson Family Preserve was donated in 1998 by John and Jan Watson, with subsequent additions purchased in 2013 and 2019. Purchase of the Schott Preserve was made possible by the Joseph J. Schott Foundation in 2014, W. Dunne Saal and Elizabeth Saal, Trustees.



Todd Parker

Directions: From Harbor Springs Airport, head south along M-119 roughly ½ mile and turn left (east) on Woodview Road. Travel ½ mile and turn right (south) on Mink Road which will dead end at the parking area on the left. Please do not park in neighbor's driveway.



Consuelo Diane & Charles L. Wilson Jr. Working Forest Reserve

Size: 248 acres

Frontage: Over half a mile frontage total on Middle and Hughston Roads.

Land Description: A beautiful scenic land close to Harbor Springs. More than half of the reserve is wooded, and some of the land is still actively farmed. Volunteers have planted hundreds of trees to slowly change some of the field to forest. A small pond is found in the northeast section.



Trails: Old logging trails have been converted to roughly 2½ miles of foot trails, meandering through the woods. Parking is available off Middle Road.

History: Located just a few miles outside of Harbor Springs, this land is most known for its undeveloped, scenic sloped hillside, viewed from Middle Road and Hughston Roads. The previous owners of this property had intentionally not developed it, and sold it in 2017. The lead pledge for the reserve came from the children of Consuelo Diane & Charles L. Wilson Jr. and was coupled with a challenge grant from The Carls Foundation. The Birchwood Farms and Harbor Springs communities helped finish the fundraising.

Directions: From the intersection of Lake Street and State Road just north of downtown Harbor Springs, travel two miles north on State to Middle Road. Take a left on Middle Road and travel roughly .8 mile. Look for the preserve sign and parking area on the left.



Woollam Family Nature Preserve

Size: 62 acres

Frontage: 2,450 feet of frontage on Lake Michigan and more than 2,300 feet along M-119.

Land Description: Mature beech-maple hardwoods transition to mixed upland conifers on high dunes near the water. The shoreline is sandy with rock and cobble in the dune swale. Much of the property is classified as "critical dunes" by the Michigan Department of Environmental Quality. This was the largest remaining undeveloped and unprotected parcel on Lake Michigan in Emmet County and now offers rare community access to beautiful Lake Michigan.

Trails: A short (approx. ½ mile) trail takes you through the hilly woods to the beach.

History: The original preserve was purchased in 2016 with funding from the John and Cyndi Woollam family, who also funded a 2019 addition.

***NOTE:** Dogs are not allowed at this preserve to protect wildlife and sensitive dune habitat. Please stay on the trail to prevent erosion.

Directions: From Harbor Springs, travel north on State Rd. 14 miles to Division Rd. Take a left and travel 1.8 miles to Lakeshore Drive/M-119. Turn right and travel .9 miles to the parking area on your left (west) side. From Cross Village head south on Lakeshore Drive (M-119) roughly 1.7 miles and you will see the preserve sign on the right (west) side of the road. The parking area is found just south of the sign.



Darrell Amlin



Todd Parker

EMMET COUNTY - FEATURED ASSIST PROJECT

The Headlands - Emmet County

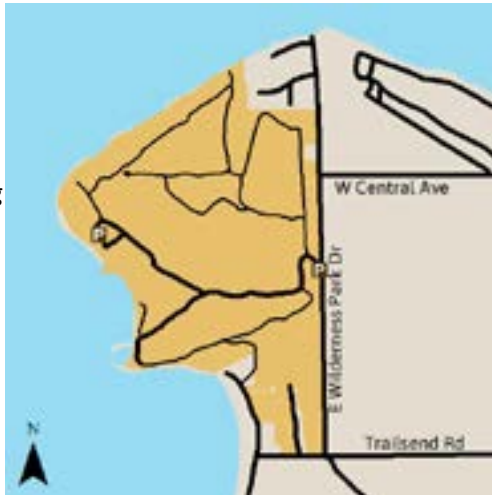
Size: 600 acres

Frontage: 2½ miles on the Straits of Mackinac, Lake Michigan

Land Description: This spectacular property hosts a variety of habitats ranging from wooded hills to Lake Michigan shoreline.

Trails & Facilities: A paved road takes you to the dark sky viewing area and trailhead. Nearly 4½ miles of trails for cross-country skiing, hiking, birdwatching, mountain biking, stargazing, and picnicking are all available at the Headlands. The property also includes a guest house for public rental. Contact Emmet County at 231.347.6536 or visit www.emmetcounty.org for more information.

History: In 1996, the Conservancy assisted Wawatam Township and Emmet County in acquiring the Headlands with a grant from the Michigan Natural Resources Trust Fund. LTC holds a conservation easement on the property. The land is an important resting stop and staging area for raptors and neotropical birds migrating across the Straits. It is also home to the endangered Dwarf Lake Iris and habitat for the threatened Lake Huron Tansy and Pitcher's Thistle. Flanked by the Straits of Mackinac, the Headlands was designated an International Dark Sky Park in 2011. Emmet County upgraded the facilities in 2017, and regular programs are held there. Visit www.midarkskypark.org.



Directions: From Mackinaw City, take Central Avenue west for 2 miles to its end. Turn south (left) and go ½ mile to the entrance on the right.



EMMET COUNTY - FEATURED ASSIST PROJECT

Jones Landing on Walloon Lake - Bear Creek Township

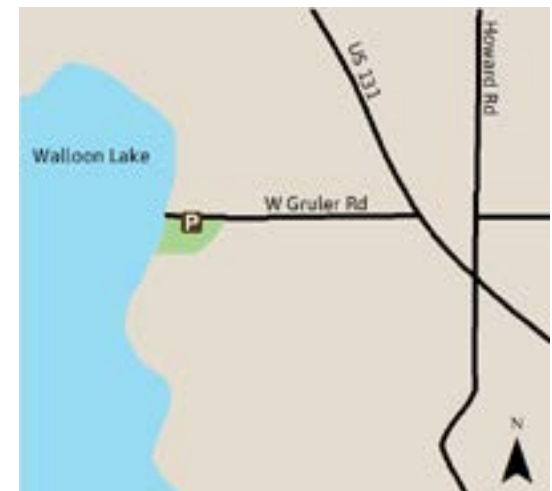
Size: 3.3 acres

Frontage: 300 feet on Walloon Lake

Land Description: One of the few public access locations to Walloon Lake.

Trails & Facilities: This universally accessible park features a covered pavilion, restrooms, picnic area, playground, boat launch, a sandy beach, and restroom facilities. To protect the lake, stormwater runoff is controlled by the use of permeable pavers and the construction of bio-swales to retain and treat water runoff.

History: LTC worked with Bear Creek Township to secure a grant from the Michigan Natural Resources Trust Fund enabling the purchase of this land in 2008 and its subsequent development. The township now owns and manages this park.



Directions: From Petoskey, take US-131 south to Gruler Road. Turn right (west) and follow to park entrance.



EMMET COUNTY - FEATURED ASSIST PROJECT

East Park & West Park - Resort Township

Size: 68 acres total

Frontage: East Park: 2,500 feet
Lake Michigan; West Park: 600 feet
Lake Michigan

Land Description: A large portion of West Park is wetlands and the remainder is largely wooded. East Park is more open and developed.

Trails & Facilities: Both parks provide access to Lake Michigan from the Little Traverse Wheelway and US -31. West Park — found just north of the Bay Shore gas station — provides parking and bathrooms. East Park includes bathrooms, a large pavilion, trails, playground, and picnic tables on a bluff overlooking Little Traverse Bay. The pavilion can be rented through the township website: www.resorttownship.org.

History: In 1995, LTC worked with the Bay Harbor Company, Emmet County, and Resort Township to establish these two parks as part of the development of the Bay Harbor community. East Park was formerly a roadside park maintained by the Michigan Department of Transportation. It is now owned and managed by Resort Township.



Directions: From the intersection of US-31 and US-131 in Petoskey, head west on US-31 for 1½ miles to the entrance of East Park.

To get to West Park from the same intersection in Petoskey, travel 6.3 miles to the village of Bay Shore and turn right on Townline Road to the park entrance on the right.



EMMET COUNTY - FEATURED ASSIST PROJECT

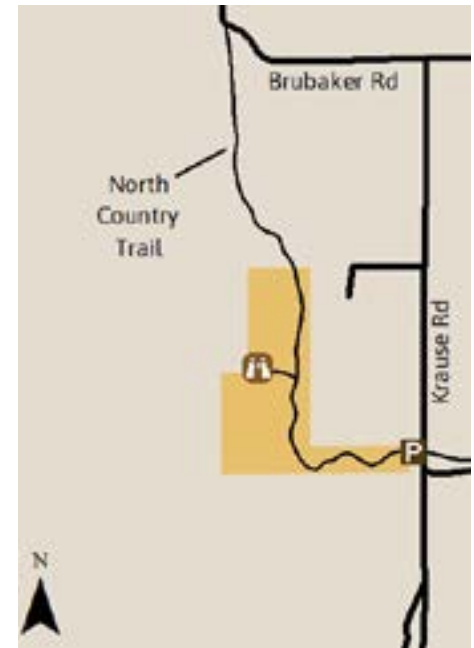
Skyline Trail - City of Petoskey

Size: 65 acres

Land Description: Atop this hill enjoy sweeping views of Little Traverse Bay and the Bear River Valley. This property lies adjacent to more than 865 acres of City of Petoskey land, as well as county and state land. The trail segments are connected through privately-granted trail easements. At an elevation of more than 1,200 feet, the views are dramatic.

Trails: Skyline Trail is part of the North Country Trail (NCT) system (www.northcountrytrail.org). This section, maintained by the Jordan Valley 45 chapter of the NCT, is hilly and difficult with two switchbacks. A nice overlook platform is found along this section.

History: In 2008, the Conservancy helped the City of Petoskey acquire this parcel and construct the overlook platform. The land was a logical location for diverting a portion of the North Country Trail away from Krause Road.



Directions: From Petoskey head east on Mitchell Street 1.7 miles to Division Road. Turn right on Division and go .8 miles to Atkins Road and turn left on Atkins. Go ½ mile to Cedar Valley Rd. and turn right for ½ mile to Greenwood Rd. Follow Greenwood around an "s" curve 1½ miles to a four-way intersection. Continue straight (south) onto Brubaker Rd. one mile to Krause Rd. Turn right on Krause and go 1 mile. Look for sign and parking on the right at the radio towers.



EMMET COUNTY - FEATURED ASSIST PROJECT Spring Lake Park - Bear Creek Township

Size: 22 acres

Frontage: Over half a mile of Spring Lake shoreline.

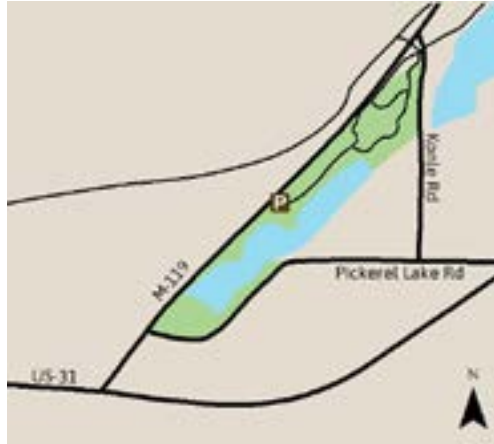
Land Description: This natural oasis just outside of Petoskey provides habitat for many classic wetland species. School groups regularly report sightings of turtles, fish, and a multitude of birds.

Trails/Facilities: A paved parking area is found directly off M-119. A gazebo, overlook, boardwalked trails, water and restroom facilities, picnic tables, and a fishing platform are available. Connects to the North Western State Trail. The township closes this park for the winter months.

History: Spring Lake Park marks the beginning of the "Gateway to Harbor" corridor, a high priority land protection region for the Conservancy which stretches along M-119 between Petoskey and Harbor Springs. Located across from the Indian Hills Trading Post, the park is a favorite place for fishing, picnicking, and observing wildlife.

Approximately half the lake frontage was obtained by Bear Creek Township in 1988 with Conservancy help. A Michigan Natural Resources Trust Fund grant, obtained by the township and Conservancy in 1995, enabled the township to purchase the remaining half of Spring Lake frontage on M-119.

With the additional land obtained, this township park now includes all the Spring Lake frontage along M-119. Another grant was received in the late 1990s to develop the parking area, restrooms, and the interpretive trail.



Directions: At the intersection of US-31 and M-119 at the north end of Petoskey, head north on M-119 for less than ½ mile. The park is on the right.



EMMET COUNTY - ASSIST PROJECT St. Ignatius Church Beach - Friendship/Readmond Township Park

Size: 5 acres

Frontage: 504 feet on Lake Michigan southwest of Good Hart

Land Description: One of the very few public Lake Michigan beaches between Harbor Springs and Mackinaw City.

Trails: A very short trail from the parking to the beach with an accessible lake overlook.

History: For many years, this land was used by the public to access the beach. Over the years, concerns arose regarding protection of the historic and tribal cemetery that is located directly adjacent to the church. Beginning in 1993, a partnership of Readmond and Friendship townships, the Little Traverse Bay Bands of Odawa Indians, the Catholic Diocese and Little Traverse Conservancy began working to address these concerns. LTC assisted the townships with an application for funding from the Michigan Natural Resources Trust Fund to purchase the land from the Catholic Diocese. LTC also preacquired adjacent land to provide public parking for those wishing to access the beach. In ensuing years, the townships were able to secure funding to construct the parking and boardwalk that exist today.



Directions: From the intersection of M-119 and Robinson Road in Good Hart, head north on M-119, and almost immediately take a left on N. Lamkin Road. At the bottom of the hill, turn left and travel one mile to the parking adjacent to St. Ignatius Church.



Sturgeon Bay Dunes of Wilderness State Park - State of MI

Size: 750 acres

Frontage: 4,100 feet
on Lake Michigan

Land Description: One of the largest public beaches in northwestern Lower Michigan.

Trails: Roadside parking is also available providing shoreline access. A township park is at the center of the property's length where a turnaround is available. The North Country Trail runs through the back dunes of the park with parking and trailheads off of Sturgeon Bay Trail and Lakeview/Gill Road.

History: In 1991, Sand Products Corporation sold this one-of-a-kind property to the State of Michigan, adding significant and much desired acreage to Wilderness State Park. The property includes habitat for the endangered Piping Plover and four threatened species of plants (Lake Huron Tansy, Pitcher's Thistle, Pumpell's Brome grass and Houghton's Goldenrod). The acquisition was a grassroots effort mobilized in the 1970s largely by Kathy Bricker (LTC's first Executive Director) and Conservancy co-founder John Tanton. Their group proposed expansion of the boundaries of Wilderness State Park to include the land. Others involved in the dune protection included The Nature Conservancy-Michigan chapter, Petoskey Regional Audubon Society, Michigan and Petoskey Garden Clubs, Trout Unlimited, Save Our Bay, Ducks Unlimited, and countless other individuals.



Directions: From Cross Village, follow M-119/Lakeshore Drive north along the coast approximately 5 miles until it dead ends at Sturgeon Bay Trail. Turn left and you will soon be at public shoreline.



Other Emmet County Preserves, Working Forest Reserves (WFR) or Transfer/Assist Projects

Those without maintained parking areas and trails (as of May, 2022)

For more details, visit the interactive map at www.landtrust.org/explore.

NAME	ACREAGE	YEAR	TOWNSHIP
Arbaugh, Dean, Hansen, Pack, Sharpe	2 acres	2010	West Traverse Township
Armistead Family	16 acres	2017	Springvale Township
Black Forest Hall	23 acres	2008	Little Traverse Township
Black Hole Management Area (William J. Dickson, Elbert Family)	221 acres	2005+	Littlefield Township
Philip J. Braun South	32 acres	2015	Maple River Township
Bryan Wildlife Management Area (Arbaugh, Krapohl, Roberts, Claes)	180 acres	1984+	McKinley Township
Martha Cavanaugh Cameron	6.5 acres	2010	Little Traverse Township
Jack and Sally Clark	5 acres	2004	City of Petoskey
Clarke Family	1.6 acres	2021	Readmond Township
Clements	16 acres	1992	Littlefield Township
Ralph and Ursula Compton	5 acres	2014	Bliss Township
Covert	62 acres	1980	Resort Township
Cranmer	4.5 acres	1990	Cross Village Township
Cross Village Cross	.1 acre	2008	Cross Village Township
Martha Curtis	25 acres	2010	Bear Creek Township
Margaret Robinson Deane & Rob Deane Family	4.4 acres	2018	Cross Village Township
Duncan C. Dobson, Jr.	8 acres	2009	Readmond Township
Donnelly and Kusel Families	20 acres	2020	Pleasantview Township
Ross Drayton	40 acres	2004	Littlefield Township
Edwards	3 acres	1987	West Traverse Township
Emmet County WFR 1	40 acres	2015	Cross Village Township
Emmet County WFR 2	40 acres	2015	Readmond Township
Emmet County WFR 3	40 acres	2015	Readmond Township
Emmet County WFR 4	40 acres	2015	Readmond Township
Emmet County WFR 5 - Thomas C. Bailey	40 acres	2015	Readmond Township
Emmet County WFR 6	40 acres	2015	Friendship Township
Emmet County WFR 7	40 acres	2015	Pleasantview Township
Emmet County WFR 8	40 acres	2015	Friendship Township
Enje Nkweshdat Wat	35 acres	1991	Cross Village Township
A.C. Fischer Management Area (Bissel, Fisk, Morley, Fairbairn, Burley, Gregory)	52 acres	1973+	Little Traverse Township
John W. Fischer Memorial	3.5 acres	2013	Little Traverse Township
Walter W. Fisher Family	41 acres	1994+	Cross Village Township
Five Mile Creek Management Area	184	1997+	West Traverse Township
Fochtman	244 acres	2001+	Bear Creek Township
Gregory	2 acres	2018	Little Traverse Township
Hankin's Glen	13 acres	2013	Bear Creek Township
Hathaway Family's Regina Caeli	92 acres	2017	Wawatam Township
Hymas Woods	149 acres	2012	Littlefield Township
Inland Waterway Management Area (Brill, Kreag Family, Williams, Ponshevaing)	85 acres	1989+	Littlefield Township
David H. Irish	60 acres	2021	West Traverse Township

NAME	ACREAGE	YEAR	TOWNSHIP
James Management Area (Davis)	6 acres	1984+	Little Traverse Township
John	11 acres	1997	Friendship Township
Kalman Management Area (Rockwell, Goldman, Shumway)	71 acres	1981+	Little Traverse Township
Kinglet Management Area	85 acres	2002+	Resort Township
Albert E. Kuebler & Daughter Marce	20 acres	2017	Maple River Township
Kuebler-Trippe-Huffman Mgmt. Area (Horace M. Huffman, Jr. "Huffy", Kuebler-Trippe)	34 acres	2004+	Little Traverse Township
Laughbaum	2 acres	2003	Springvale Township
Gow Litzenburger East	80 acres	2017	Springvale Township
MacDonald	14 acres	1990	Little Traverse Township
Meadowgate Management Area (Sandford, Saviano)	11 acres	1978+	Little Traverse Township
Menonaqua Woods Management Area (Michael Cameron Dempsey, Kramer)	113.5 acres	2004+	Little Traverse
John and Julia Pachy Management Area (Barb and Joe Traub Family WFR)	224 acres	2011+	Carp Lake Township
Petersen	10 acres	2011	Friendship Township
Katherine G. Phelan and Orth Family	10 acres	2012	Readmond Township
Pleasantview Woods	9 acres	2008	Little Traverse Township
Ponshewaing	21 acres	1989	Littlefield Township
Sarah and Fred Renker	.5 acre	2007	Little Traverse Township
Reycraft-Meijer Management Area (Reycraft-Meijer North & South)	56 acres	2017	Resort Township
Roaring Brook Management Area (John & Helen Schachinger South)	21 acres	1980+	Little Traverse Township
Rocky Point	27 acres	1986	Springvale Township
Rosen Family	4 acres	2013	Readmond Township
Marquita Robbins Rothe & Edward Rothe WFR	40 acres	2021	McKinley Township
Ryan	50 acres	1998	Cross Village Township
John & Helen Schachinger N Mgmt. Area (Bartley)	5 acres	1980+	Little Traverse Township
Scott Family	5 acres	2012	Readmond Township
Reg and Vivian Sharkey	3.2 acres	2004+	Bear Creek Township
Shurtleff	.4 acre	1997	Cross Village Township
Sims-Moffatt WFR	70 acres	1986	Center Township
South Round Lake	10 acres	1991+	Bear Creek Township
Stony Point	50 acres	2000	Carp Lake Township
VanLokeren Family Lakeside	33 acres	2020	Center Township
William and Stephanie Veling	66 acres	2011	Carp Lake Township
West Wequetonsing	14 acres	1973	Little Traverse Township
Charles S. Winston, Jr.	50 acres	2005	West Traverse Township
Wortley Family	80 acres	2016	Readmond Township
Henry and Anna Yeiser	30 acres	2018	West Traverse Township
Zebewaing River Basin	23 acres	2021	Friendship Township
<i>Other Assist Projects of Note:</i>			
Alanson River Access	.5 acre	2009	with Village of Alanson
Camp Petosega	195 acres	1992	with Emmet County
Whitefish Point	144 acres	1994	with State of Michigan
Wilderness State Park addition	142 acres	2005	with State of Michigan

+ denotes multiple years



Charlevoix

	page
1 Barney's Lake - Beaver Island.....	40
2 Darnton Family.....	41
3 The Hill.....	42
4 Nathan "Barry" Driggers.....	43
5 Elizabeth B. Hoffmann/DeNardis Family....	44
6 Horton Creek Complex.....	45
7 Little Sand Bay - Beaver Island.....	46
8 George & Althea Petritz - Beaver Island.....	47
9 Charles A. Ransom.....	48
10 Raven Ridge.....	49
11 Rogers Family/Dressel/Jordan River.....	50
12 St. Clair Lake/Six Mile Lake Natural Area....	51
13 Sleepy Hollow.....	52
14 Stanhope Family.....	53
15 Susan Creek.....	54
16 Taylor Olstrom.....	55
17 Wisser Saworski.....	56

Featured Transfer/Assist Projects

18 Camp Seagull.....	57
19 Miller's Marsh.....	58
20 North Point.....	59

Other Preserves & Reserves.....	60
---------------------------------	----



CHARLEVOIX COUNTY - BEAVER ISLAND
Barney's Lake Nature Preserve

Size: 337 acres

Frontage: 4,900 feet on Barney's Lake and 1,770 feet along Lake Michigan

Land Description: The diverse features of this preserve include the lake, open bog, sedge meadow, cedar swamp, and an old farmstead. Active loon nests are often found on the lake.

Trails: Nearly a mile of trail is found to the east of the lake. A second trail and sign are found at the north end of the preserve off of Barney's Lake Road. From there, hike .7 mile to connect to the Kuebler Trail.

History: Barney's Lake Nature Preserve is located in the northwest part of Beaver Island, about three miles southwest of St. James. The original preserve was donated to the Conservancy in 1988 by the heirs of Bernard and Margaret O'Donnell. Bernard O'Donnell (great-grand nephew) and Theresa Gacek (great-great-grand niece) were instrumental in carrying out the family's wishes that the land be kept in its natural state and available to the public. In 2007, a 173-acre addition to the preserve was donated by Terry and Beverly Scully. And in 2014, another 40 acres were purchased at a bargain sale from Jon and Sally Fogg with funding from the J.A. Woollam Foundation.



Directions to main parking area: From Port of St. James, take Kings Hwy. south 1¼ miles to Barney's Lake Road North and turn right. Continue 2½ miles and the preserve is on both sides of the road. Look for a sign on the left side. Parking is on the left. Boat launch is adjacent to southern parking. Another small parking area is found near the northern edge of the preserve off of Barney's Lake Road.



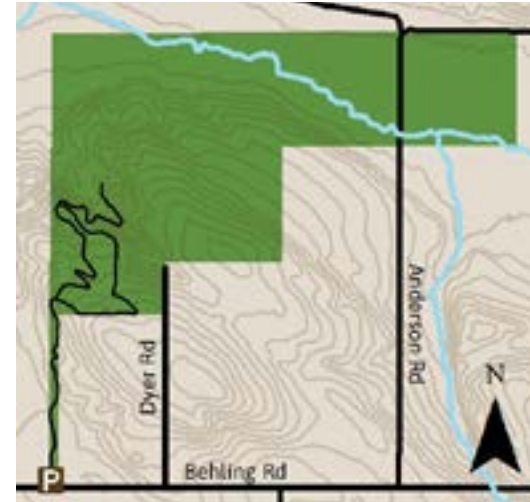
CHARLEVOIX COUNTY
Darnton Family Nature Preserve

Size: 275 acres

Land Description: Just a few miles outside of Boyne City, this preserve offers rolling terrain and varied habitats, including a mix of old hay fields, northern hardwood forests, pine plantations, and conifer swamp wetlands surrounding Porter Creek, a trout stream and important tributary to Lake Charlevoix.

Trails: 6½ miles

History: In the early 1990s, Jeff Knaggs purchased this land from his grandparents and for decades, the family enrolled the land into a variety of conservation programs. Trees were planted for wind breaks, erosion control, wildlife food, and aesthetics. Over time, the trees were managed within a Forest Stewardship Program, including most recently to control the invasive pest Emerald Ash Borer. The purchase of the preserve in 2013 was made possible by the Taylor Foundation, the J.A. Woollam Foundation, and the Darnton family. The preserve is named after the generations of Darnton family who have loved the Lake Charlevoix region. Two additions totaling 70 acres and with 2,000 feet more along Porter Creek were purchased in 2017 with funding from John and Cyndi Woollam.



Directions: From Front Street in Boyne City, head southwest out of town following the lake until it becomes Marshall Road. Follow ½ mile and take a left on Anderson Road. In 2½ miles, take a right on Behling Road. Follow .8 mile to the parking area on the right.



CHARLEVOIX COUNTY The Hill Nature Preserve

Size: 106 acres

Land Description: A mix of pines, hardwoods, and open meadows with remnant apple trees from an old farmstead. Views of Lake Charlevoix are found at the highest points of the land. Part of the preserve is located within Boyne City limits.

Trails: More than two miles of trails include old two-tracks that are periodically groomed for cross-country skiing by a volunteer.

History: In 1966, Dr. Gene Herzog, Dr. John Herzog, and Dr. Lou Mrstik purchased this property for their families to have an "up north" destination. It was used for family gatherings and enjoyment for several decades. In 1996, the families donated a conservation easement to protect their beloved land from future development and in 2011, the land was donated to LTC as a nature preserve. In 2012, Al Haske donated a 10-acre addition to provide improved parking for the preserve.



Directions: From Boyne City at the intersection of Lake and Water Street, go north on Lake for one mile. Lake Street turns into W. Michigan. Go .1 mile on W. Michigan and turn right on Charlevoix Street. Go 1.6 miles north on Charlevoix Street to Clute Road. Turn right onto Clute Road. Go .7 mile to parking area on your right.



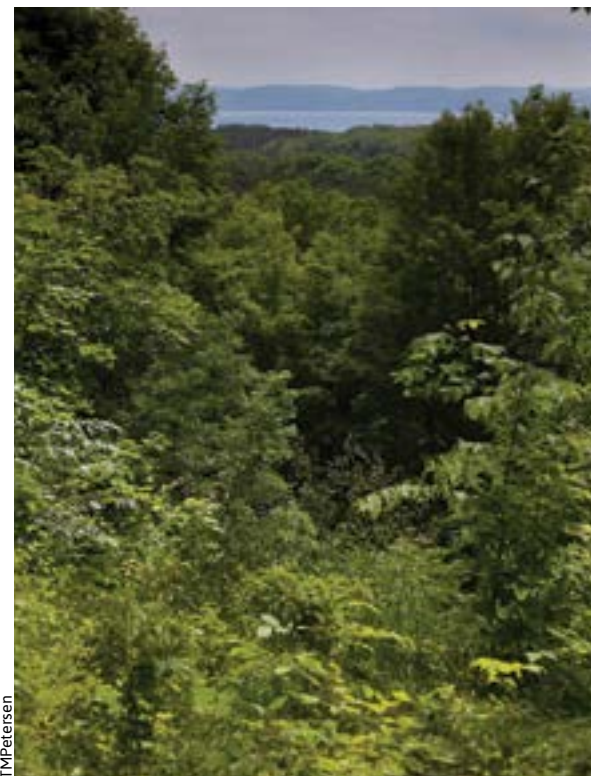
CHARLEVOIX COUNTY Nathan "Barry" Driggers Nature Preserve

Size: 75 acres

Land Description: Once a farm, the property includes a pine plantation, wetland/pond, open fields, and a high, forested ridge. This preserve lies directly across from the Township's Camp Seagull park.

Trails: A 1½ mile trail system meanders through the preserve, providing views of Lake Charlevoix. Cross-country ski trails are periodically groomed by a volunteer.

History: When the possibility of a 20-home development was proposed for this property, grassroots fundraising by a neighborhood group resulted in the creation of this preserve in 2007. The preserve was named in honor of Barry Driggers who had a long conservation history throughout the country and whose family has summered in the Horton Bay region for decades. See page 56 for Hayes Township's Camp Seagull park which is just down the road and offers access to Lake Charlevoix and more.



Directions: From the intersection of US-31 just north of Charlevoix, head east on Boyne City-Charlevoix Road and travel 5.3 miles. Parking is found on the left side of the road.



Elizabeth B. Hoffmann/Diane & Richard DeNardis Family Nature Preserves

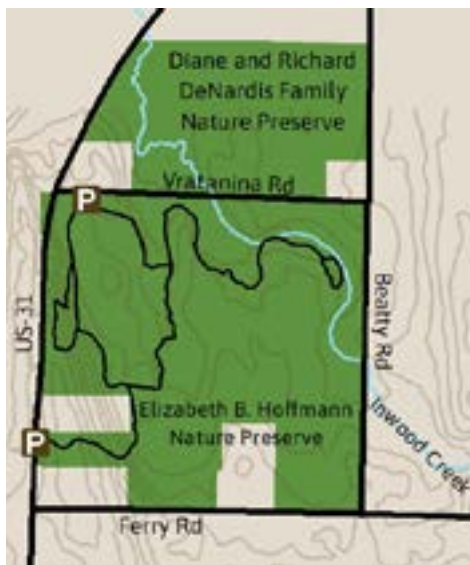
Size: 212 acres total

- Elizabeth B. Hoffmann: 149 acres
- Denardis Family: 63 acres

Frontage: Nearly ½ mile of Inwood Creek flows through the two preserves.

Land and Trails: A nearly three-mile trail loop winds through old orchards, farm fields, alongside Inwood Creek, through woods, and atop a hill offering Lake Michigan views. Conveniently located off of US-31, the preserve is also found next door to the a brewery and art gallery, making it an extra fun destination.

History: Much of this land was protected in 2017 when longtime conservationist Betty Hoffmann donated 138 acres to become the Elizabeth B. Hoffmann Nature Preserve. In 2019, she contributed an additional 5 acres to this preserve, and then donated another 5 acres in 2021. The adjacent Diane and Richard DeNardis Family Nature Preserve was donated in 2018.



Directions: From the light at the intersection of M-66 and US-31 at the south end of Charlevoix, travel 5½ miles and take a left on Vrantana Road for one parking area. Another parking area is directly off of US-31 just north of the Bier Art Gallery.



Horton Creek Nature Preserve Complex

Size: 335 acres combined with six nature preserves (Horton Creek and Horton Creek Wetlands are to the north and do not have trails.)

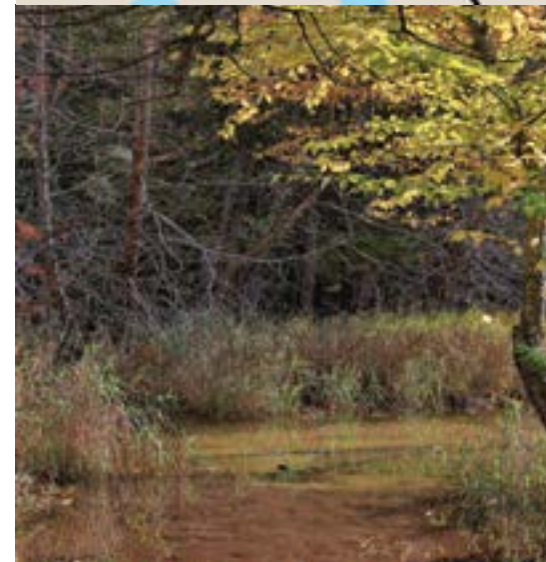
- Horton Creek: 20 acres
- Horton Creek Wetlands: 33 acres
- Schulz: 40 acres
- Taylor Horton Creek: 187 acres
- Nick Adams: 45 acres
- Rufus Teesdale: 10 acres

Frontage: Combined 2.7 miles of Horton Creek frontage.

Land: Hemlock and yellow birch grow along the edge of the creek. Logging activities have occurred at Schulz over the years. A small trail on the Rufus Teesdale Preserve takes you to the river.

Trails: Nearly three miles of trails wind through mature hardwood forests and young pin cherry stands, primarily at the Schulz and Taylor Horton Creek preserves.

History: Ernest Hemingway loved to fish for trout on Horton Creek. He refers to it in several stories and memoirs, and it appears to be the model for the creek mentioned in the Nick Adams stories "Summer People" and "The Last Good Country." The protection of this complex of nature preserves began in 1990.



Directions: To access the trail system on the west side of Horton Creek: **From Charlevoix**, take US-31 northeast 2 miles and turn right on Boyne City-Charlevoix Road. Go 8.6 miles, and turn left on Pincherry. Go north 2.1 miles and parking is on the right. **From Boyne City**, take Boyne City-Charlevoix Road 7 miles, and turn right on Pincherry. Follow rest of directions above.

Access to the creek off of the Boyne City-Charlevoix Road is available through the Rufus Teesdale Preserve.



CHARLEVOIX COUNTY - BEAVER ISLAND
Little Sand Bay Nature Preserve

Size: 118 acres

Frontage: 3,500 feet on Lake Michigan

Land Description:

A mix of conifer forest, thick cedar swamp, and sand dune and shoreline. Lake Huron Tansy and other threatened and endangered species thrive here.

Trails: A short trail (.4 mile) and boardwalk allow visitors to explore without causing damage to the sensitive habitat. The preserve provides public access to the lake and a beautiful sandy beach.

History: Designated by a group of island residents as the number one priority for acquisition and preservation, the Conservancy acquired the original 60 acres in 1994. In 1999, the Conservancy helped the state acquire 30 additional acres. In 2011, LTC purchased a 28-acre addition to the preserve with funds from the J.A. Woollam Foundation. When added to adjacent state land to the north, nearly 1½ miles of shoreline are now protected. The old "Gallagher House" is protected on this preserve and two temporary sculptures were placed near it in 2021 as part of a larger island art initiative.



Frank Solle



American Pipit/Darrell Lawson

Directions: From the Welke's airport, go south on East Side Drive for approximately 200 yards. Look for a sign on the left (east) side of the road.



CHARLEVOIX COUNTY - BEAVER ISLAND
George and Althea Petritz Nature Preserve

Size: 27 acres

Frontage: 500 feet on Lake Michigan

Land Description: Natural habitat for deer, wild turkey, and other animals as well as the state threatened pitcher's thistle and Lake Huron tansy. From the beach, you will have views of Garden, Hog, and Squaw islands. The preserve provides significant waterfowl and migratory bird habitat.

Trails: Located at the northeast end of Beaver Island, this preserve is walking distance from St. James Bay and town. A short (½ mile) trail takes you from the road to a beautiful Lake Michigan beach.

History: In 2005, John Woollam started a vision of land protection for this beautiful corner of Beaver Island. Over the next several years, he made a series of six purchases to form the Petritz Preserve, then naming it in honor of the family from whom he purchased the original 13 acres.

In his personal description of the preserve he wrote, "I would like it to remain a place to quietly appreciate nature."



Directions: From St. James, take Main Street .7 miles north out of town. Turn left onto Lake Drive and travel .2 mile to the preserve sign on your left. Park on the side of the road.



Charles A. Ransom/Robert L. Bytwerk

Size: 240 acres combined

- Charles A. Ransom: 80 acres
- Robert L. Bytwerk: 160 acres

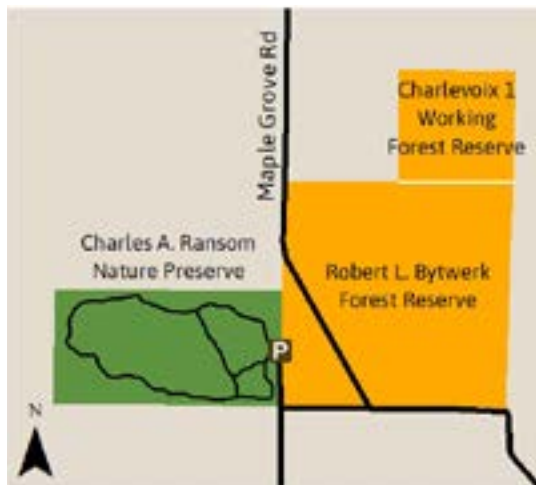
Land Description:

The Ransom Preserve includes a mix of open fields with scenic views and northern Michigan hardwoods. Bytwerk WFR is primarily wooded.

Trails: From the parking area of the Ransom Preserve, you will find a trailhead to a 1½ mile trail system. The terrain is quite steep and hilly. No formal trails on the Bytwerk Reserve.

History: The Charles A. Ransom Nature Preserve was donated in 1976 by Woodbury and Christiana Ransom in memory of their son. From its highest point on a clear day you can see a broad expanse of Lake Michigan, four islands, and the distant Leelanau Peninsula. In 2021, the Robert L. Bytwerk Forest Reserve was created with a lead gift from Randall Bytwerk and Beth Byrne in memory of their father. Additional donations made this beautiful land protection possible.

(NOTE: The 40-acre Charlevoix County Working Forest Reserve #1 lies adjacent to the northeast side of Bytwerk, creating a total of 280 contiguous protected acres.)



Directions: From Petoskey, take US-31 south approximately 9 miles to Burgess Road and turn left. Go 3½ miles to Quarterline Road and turn left. Go one mile to Maple Grove Road and turn left. The parking area is ¾ mile down Maple Grove Road.



Bytwerk



Raven Ridge Nature Preserve

Size: 140 acres

Land Description:

Open fields and wooded ridges. The property includes an old homestead site that has been studied by archaeologists.

Trails: A rustic parking area off a dirt road is located at the trailhead on Rogers Road. Trails total more than 1½ miles and are quite hilly. One trail takes you to an overlook platform providing views of the valley beneath. A trail connects the preserve with the Raven Hill Discovery Center which lies adjacent to the preserve.

History: The Raven Ridge Nature Preserve was purchased in 2001 as a result of joint fundraising efforts by the Conservancy and Raven Hill Discovery Center. The Discovery Center provides unique environmental education opportunities on more than 300 acres of land. In addition, science, history, and art classes are offered throughout the year. Visit www.miravenhill.org to find the full schedule of activities happening next to this preserve.



Directions: From Boyne Falls, turn west (right) at the blinking light in Boyne Falls and go .8 mile along M-75. Turn left onto C-48 (Deer Lake Road). Follow to stop sign and turn left toward East Jordan (still on C-48). Go 4 miles and turn left on Pearsall Road. Within 50 feet, turn left on Fuller Rd. Go up the big hill past Raven Hill Discovery Center until you reach a "T." Turn left on the seasonal Rogers Road and parking is on the right. In winter, park at Raven Hill and use their trails to access preserve.



Rogers Family/Dressel/Jordan River Nature Preserves

Size: 206 acres combined

- Rogers Family Homestead: 154 acres
- Jordan River: 40 acres
- Dressel: 10 acres
- Jordan River Sedge Marsh: 2 acres

Frontage: More than two miles of Jordan River shoreline.

Land Description: A broad diversity of habitats lie along this stretch of the Jordan River ranging from mixed hardwood/conifer swamp to upland savannahs. From these preserves, the river empties into "the spreads" which is a wider wetland on the edge of the city of East Jordan.

Trails: Two parking areas are available, along with an easy 1½ mile trail system along an old railroad bed. Just upstream of the preserves lies a public access/canoe launch, making for a nice paddling destination that ends in East Jordan at the edge of Lake Charlevoix. The City is making more improvements at the nearby Sportsman's Park.

History: In 1869, Samuel G. Rogers and his wife Eleanor moved from Ontario to homestead the land that is now the Rogers Preserve. The land was cultivated with oxen and horses and hay was grown to feed the cattle and pigs. This complex now includes four nature preserves protected over the years since 1992.



TMPetersen

Directions: From downtown East Jordan, travel northeast and then east on M-32 for 1.3 miles to Rogers Road. Turn right and the preserve is ½ mile down on the right.



St. Clair Lake/Six Mile Lake Natural Area

Size: 261 acres

Frontage: 2.3 miles frontage along St. Clair Lake and Sinclair River

Land Description: The protected land includes marshes, cedar wetlands, fields, uplands, and forests. This natural area provides one of the longest stretches of undeveloped shoreline within the Elk River Watershed. It is located in the upper portion of an interconnected chain of lakes and rivers which crosses the Charlevoix-Antrim county border. The Sinclair River connects the two lakes, making it a beautiful place for silent water sports. Mink, otter, Great Blue Heron, Belted Kingfishers, and Bald Eagle are among the region's inhabitants.

Trails: The Mary Behrens Sorrell Trail (a universal access trail) allows people of all ages and abilities to appreciate this natural wonder. The preserve provides access for canoeing and kayaking and lies along the Chain of Lakes Water Trail. Visit www.paddleantrim.com.

History: The protection of the natural area was made possible by the efforts of a local grassroots group which raised funds and prompted the first joint project between the Little Traverse Conservancy, Grand Traverse Regional Land Conservancy (GTRLC), and local residents. Funds were also provided by the Malpass Family and South Arm Township. Multiple land donations and purchases since 1993 created this complex which is currently managed by GTRLC. To learn more visit www.gtrlc.org.



Directions: From Ellsworth, take C-48 east approximately two miles to South Arm Township Park and look for the sign and parking on the right side of the road. There is a kayak/canoe launch on the river.



CHARLEVOIX COUNTY
Sleepy Hollow Nature Preserve

Size: 55 acres

Frontage: A spring-fed stream flows through the property.

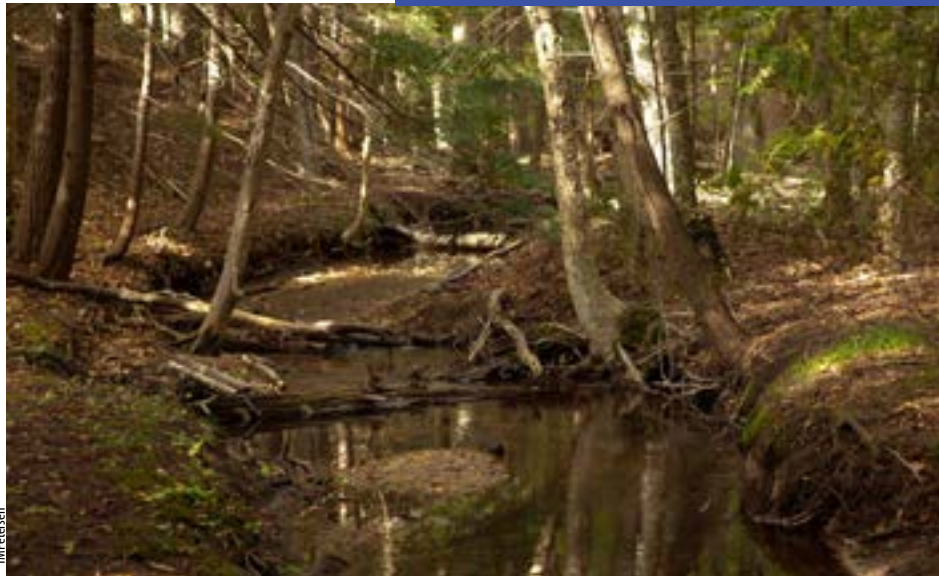
Land Description: Sear Creek runs through this preserve and empties into the south arm of Lake Charlevoix. Brook trout can be found in the creek. The property is dominated by sugar maple, ash, and American beech with aspen and hemlock also in abundance. The beautiful forest is second growth, and large stumps with fire scars scattered throughout the preserve stand as testimony to its past logging days.

Trails: More than one mile of easy walking trails cross the creek through the scenic wetlands and uplands.

History: Donated anonymously to LTC in 1980, this preserve is important to the protection of the Lake Charlevoix Watershed.



Directions: From Charlevoix, take M-66 south approximately 7 miles to Sleepy Hollow Lane, which is opposite Phelps Road. Turn left onto Sleepy Hollow Lane and parking is a short distance down on the left.



CHARLEVOIX COUNTY - BEAVER ISLAND
Stanhope Family Nature Preserve

Size: 13 acres

Frontage: 200 feet on Lake Michigan/Gull Harbor

Land Description: 13 acres of mixed upland hardwood forest. The property lies adjacent to township property along Gull Harbor Road and parallels the shore. A section of road east of the preserve parking is currently flooded (2022).

Trails: Unless water levels prevent it, parking is available near the preserve sign and you will see the trail entrance here as well. This trail connects to other trails that travel through this portion of the island.

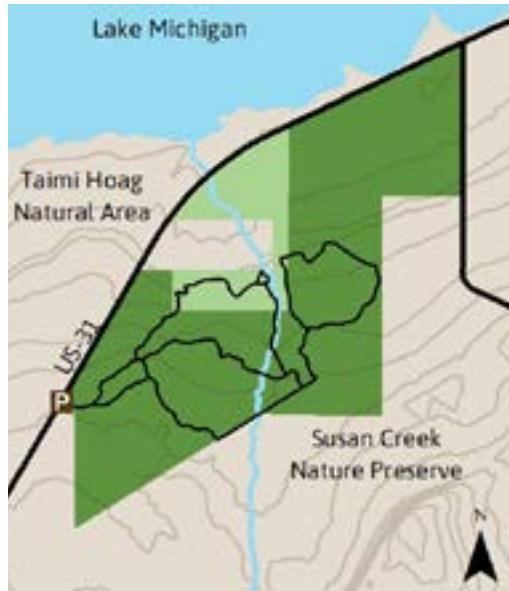
History: The purchase of this land was funded by Ray and Ann Stanhope in 2020. "A primary part of our motivation was to ensure that people could still easily hike through the Limestone Ridge Trail where it comes through there," Ray said.



Directions: From the Beaver Island ferry dock, head northeast around the harbor on Main Street/Michigan Avenue for one mile and turn left on Gull Harbor Drive. Travel .3 miles to the preserve parking and entrance.



CHARLEVOIX COUNTY
Susan Creek Nature Preserve



Size: 314 acres

Frontage: Nearly a mile of frontage on Susan Creek and nearly a mile of frontage on US-31.

Land Description: Outstanding wildlife habitat provides wet meadows, black ash swamp, cedar thickets, ponds, and hardwoods. Wildlife from grouse to black bear are found. An old railroad grade follows the southeast portion. The preserve lies adjacent to the 55-acre Taimi Hoag Natural Area owned and managed by the Little Traverse Bay Bands of Odawa Indians.

Trails: Nearly 2½ miles of trails with adjacent natural area. A winter-only ski loop adds one mile of trail to enjoy.

History: This preserve was a significant success story in the Conservancy's protection of the US-31 scenic road corridor between Petoskey and Charlevoix. Several acquisitions have been added over the years beginning with the original 132 acres in 2003. Funding came from a Michigan Department of Transportation grant, a grant from the Michigan Department of Environmental Quality, and private funds from the Frey Foundation, the Herbert H. and Grace A. Dow Foundation, the Offield Foundation, and the Americana Foundation. Funding for the trail and parking area came from the James Buchanan Family, Charlevoix County Community Foundation, Bay Harbor Foundation, Chemical Bank, and Matt Lester.

Directions: Four miles east of Charlevoix and 11 miles west of Petoskey's intersection of US-31 and US-131, the entrance to Susan Creek is .6 miles southwest of Big Rock Road. The preserve runs parallel to the Little Traverse Wheelway along US-31.



CHARLEVOIX COUNTY
Charles M. Taylor III/Olstrom Family Nature Preserve

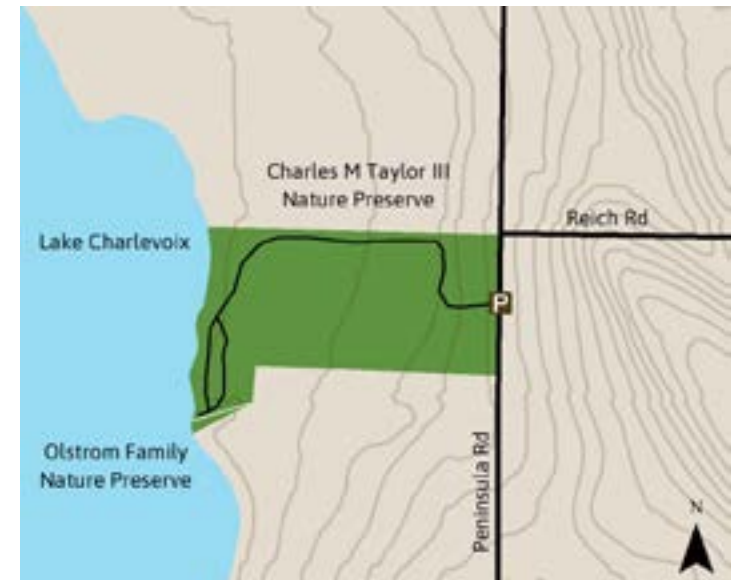
Size: 35 acres

Frontage: More than 1,200 feet of frontage on Lake Charlevoix.

Land Description: A red pine plantation on the east end slopes down to an open field and then transitions to cedar wetlands before reaching the lake shore.

Trails: A short (roughly ½ mile) trail takes you to the lakeshore.

History: Once the site of a logging settlement known as Dwight's Landing, this land had been owned by the Olstrom family since the late 1800s and four generations had grown up on the farm nearby. The original preserve was funded with a grant from the Charles M. and Joan Taylor Foundation and a donation from the Olstrom Family in 2010. In 2012, the preserve doubled in size thanks to another donation from the Taylor Foundation and additional funding from the J.A. Woollam Foundation.



Directions: From East Jordan, head north on Main Street and turn left on Division Street. Continue a short way and take the 2nd right onto Sunset Street. Go 1 mile and turn left onto S. Advance Road. In half a mile, turn slight right onto S. Peninsula Road. Travel just over two miles and watch for the preserve sign on the left, just before hitting Reich Road.



CHARLEVOIX COUNTY
Wisser-Saworski Nature Preserve

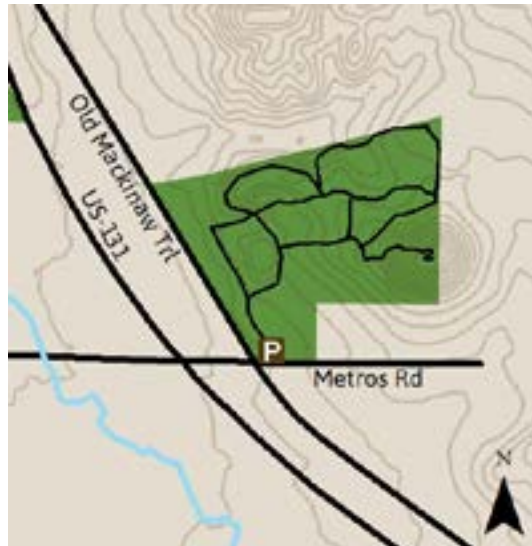
Size: 36 acres

Frontage: 1,170 feet along Old Mackinaw Trail.

Land Description: Located off US-131 just south of Boyne Falls, this preserve includes open fields, mixed hardwoods, and hills from which you can enjoy views of Boyne Mountain located to the west. The preserve is adjacent to Boyne Fall's 160-acre school forest.

Trails: A 1½ mile trail weaves through the preserve. An overlook platform was built by LTC at the highest point of the preserve.

History: In 2014, this preserve was donated from the estate of Art Saworski who had a deep love of the land and had lovingly built trails and cared for the land for many years.



Directions: From the light at the US-131 intersection in Boyne Falls, continue 1½ miles south along US-131. Turn left onto Metros Road. Cross the railroad tracks and the parking area is on the left.



CHARLEVOIX COUNTY - FEATURED ASSIST PROJECT
Camp Seagull - Hayes Township

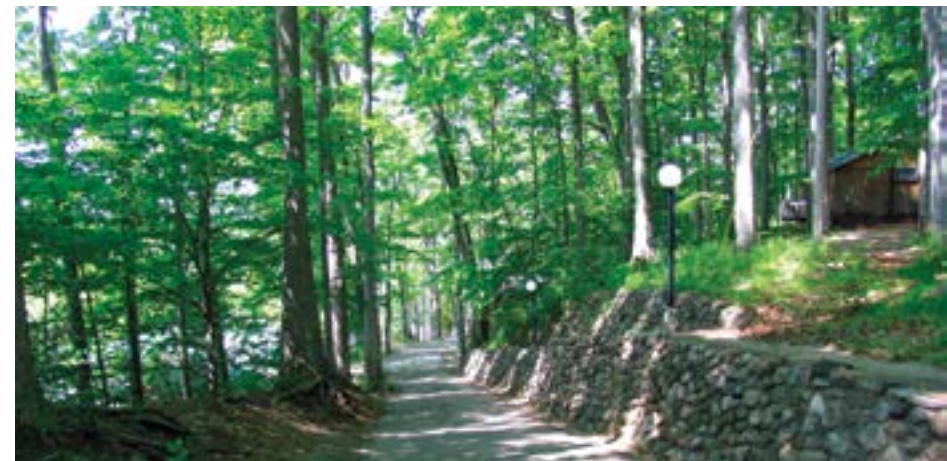
Size: 20 acres

Frontage: 1,400 feet on Lake Charlevoix.

Land Description: Motorized boat access ramp, beach access, and facilities. Visit www.hayestownshipmi.gov for more details.

Trails: Across the road is found the Driggers Preserve where trails can be found (see map right and p. 43).

History: Since the 1920s, this property had functioned as a camp, at first as the all-girls Camp Karefree, later changing to Camp Seagull. In 1955, the Schulmans purchased the camp, and their three children later ran it from 1972 until it closed in 2012. With the camp's closing, township officials saw an opportunity to meet residents' desire for more lake access with a special interest in a place to launch motorized boats. A series of public hearings confirmed widespread support for acquisition of the site. LTC assisted the township in writing and securing a grant from the Michigan Natural Resources Trust Fund and the land was acquired by Hayes Township in 2014.



Directions: From the intersection of US-31 just north of Charlevoix, head east on the Boyne City-Charlevoix Road and travel 5.3 miles. The park is found on the right side of the road.



Miller's Marsh - Central Michigan University (Beaver Island)

Size: 230 acres

Land Description: Miller's Marsh is the largest and most diverse marsh found on Beaver Island. Its diversity consists of open shallow water, extensive sedge (to the west), and sphagnum mats (to the east) surrounded by a vast mature second growth beech-maple forest. Home to frogs, migratory birds, and waterfowl.



Trails: A small parking area leads to a one mile trail. This area also marks the southern end of the island's Doty's Camp Trail.

History: The southernmost body of water on Beaver Island's west side is Miller's Marsh, named after former Beaver Island Head Lighthouse Keeper Harrison "Tip" Miller. Purchased by the Little Traverse Conservancy in 1997, this property was conveyed to the Central Michigan University Biological Station in 1998.



Directions: From St. James, take the King's Hwy. south for 4 miles. Turn right onto Paid Een Ogs Road. Continue about 1½ miles. At the four corners and airport turn left onto West Side Drive. Continue on West Side Drive approximately five miles to Miller's Marsh which will be on the left side of the road.



North Point - Charlevoix Township

Size: 27 acres

Frontage: 2,800 feet on Lake Michigan

Land Description: Here you will find forests in several stages of succession, Lake Michigan shoreline and dunes, and three threatened plant species: Pitcher's thistle, Lake Huron tansy, and Pumpell's bromeegrass.

Trails: Located adjacent to the Mt. McSaubia recreation area just outside the city of Charlevoix, drive to the trailhead or enter from Mt. McSaubia. A network of trails offers access to the beach and wooded back dunes.

History: In 1988, North Point was purchased with funds contributed by the people and businesses of the Charlevoix area, with the help of a grant from the Michigan Natural Resources Trust Fund. Charlevoix Township owns and manages this property as a public natural area.



Directions: From US-31 on the north end of Charlevoix, take Mercer Road north (toward the lake). Turn left on Maple and then right on McSaubia. Look for parking on your left near the sign or continue to the parking/turn around near the lakeshore.





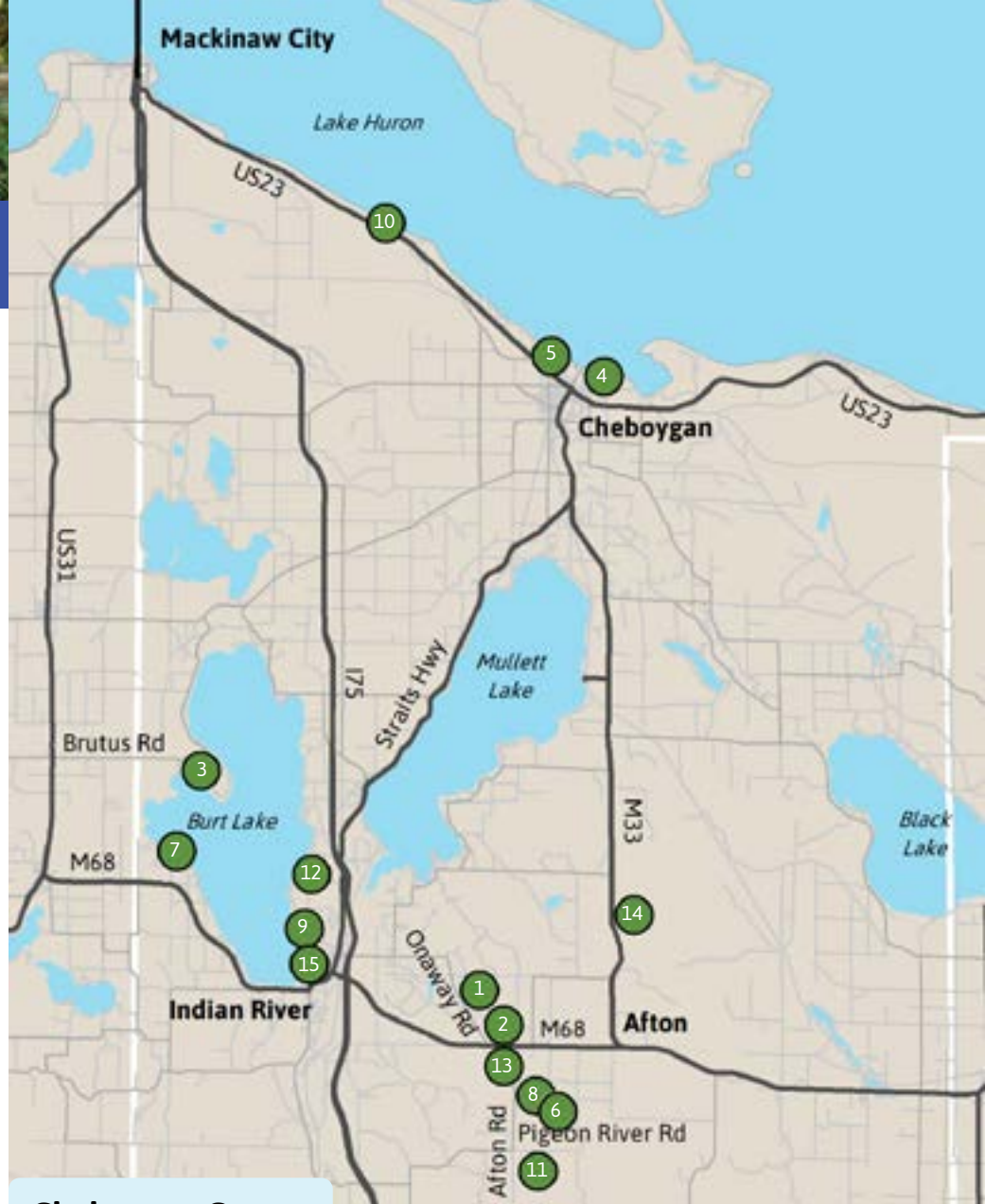
North Branch Boyne River/Gary Osterbeck

Other Charlevoix County Preserves, Working Forest Reserves (WFR), Transfer & Assist Projects

Those without maintained parking areas and trails (as of May, 2022)

For more details, visit list below the interactive map at www.landtrust.org/explore.

NAME	ACREAGE	YEAR	TOWNSHIP
Andrew and Mary Aish Ke Bug	50 acres	2019	Charlevoix Township
Nathan Beem Memorial	105 acres	2018	South Arm Township
Carl E. Erber	.5 acre	1993	Peaine Township
Carpenter Family	30 acres	2018	Boyne Valley Township
Charlevoix WFR 1	40 acres	2015	Hayes Township
Charlevoix WFR 2	40 acres	2015	Wilson Township
Charlevoix WFR 2a	48 acres	2016	Wilson Township
Charlevoix WFR 3	40 acres	2015	Hudson Township
Charlevoix Hospital/Boulder Park	1.3 acres	2013	Charlevoix Township
Conn's Cove	226 acres	2010+	Peaine Township
Erber	.5 acre	1993	Peaine Township
Margaret P. Erber	1.5	2014	Peaine Township
Peter P. Faskey	28 acres	2013	Boyne Valley Township
Gabos Family	17 acres	2014	City of Boyne City
Gatt Family	22.5 acres	2012	Eveline Township
Haggerty	10 acres	1990	Hayes Township
John and Barbara Hazelworth	10 acres	2018	Norwood Township
Franklin J. Helle Memorial	11 acres	2008	Melrose Township
Kieren Memorial	2 acres	1993+	Hayes Township
George & Marion Light	22 acres	2017	Norwood Township
Gow Litzenburger West	20 acres	2017	Chandler Township
Loeb Nature Preserve	1.5 acres	1980	Hayes Township
Bill and Mary Glenna Malpass	7.5 acres	2018	South Arm Township
Joseph & Ingeborg Marchio	40 acres	2014	South Arm Township
Sarah A. Martin	106 acres	2017	Peaine Township
Marvin Memorial	132 acres	1999+	Wilson Township
Marx	2.9 acres	1991	Bay Township
Mulberry Farm	13 acres	1990+	Hayes Township
North Branch Boyne River (Three Bears Mountain, Big Cedar)	220 acres	1992+	Boyne Valley Township
Olstrom Family	1 acre	2010	South Arm Township
Oyster Bay	23 acres	1982	Hayes Township
Rufus Teesdale	10 acres	2000	Bay Township
Scollin-Lee	2.7 acres	1992	Boyne City Township
Phila A. Shanahan	.5 acre	2013	Charlevoix Township
Slough Family	10 acres	2020	South Arm Township
Spehar	2 acres	2012+	City of Boyne City
Susan Lake (Seibert)	.5 acre	1991	Hayes Township
Charles M. Taylor III	16 acres	2010	South Arm Township
Undine	28.5 acres	2004	Hayes Township
Jack and Helen Verlinden	8 acres	2008	Hayes Township
Weislik	4 acres	1975	Norwood Township
Wellman	5 acres	2002	Boyne Valley Township
Winchester	4 acres	1996	Marion Township



Cheboygan County

	page
1 Agnes S. Andreae.....	62
2 Boyd B. Banwell.....	63
3 Chaboiganing/Indian Point.....	64
4 Duncan Bay.....	65
5 Gauthier.....	66
6 Jack and Tucker Harris.....	67
7 Harris-Melvin Family.....	68
8 Helmer's Dam/Robert D. VanCampen.....	69
9 Hildner-Bearce/Waubun/Davis.....	70
10 Barbara C. Hoffius.....	71
11 Reed's Pigeon River.....	72
12 Seven Springs.....	73
13 Vivian VanCampen.....	74
Featured Transfer/Assist Projects	
14 Lee Grande Ranch.....	75
15 Tuscarora Township.....	76
Other Preserves & Reserves.....	77

CHEBOYGAN COUNTY
Agnes S. Andreae Nature Preserve

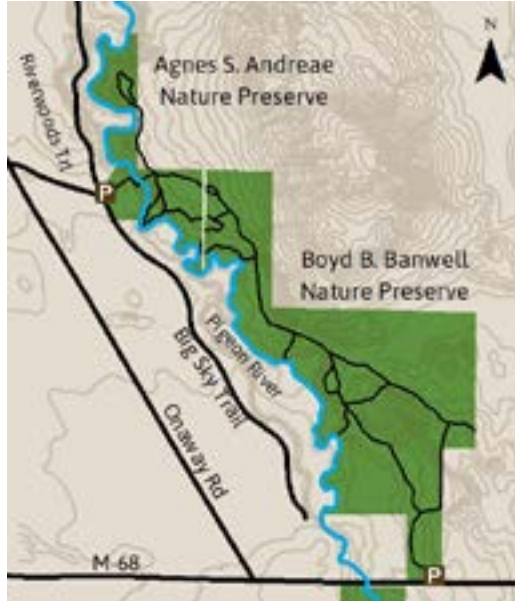
Size: 81 acres

Frontage: 1.4 miles of frontage along the Pigeon River

Land Description: Set along the lower Pigeon River (a Blue-Ribbon trout stream), this preserve includes pine forests on steep bluffs above the river.

Trails: More than five miles of trails can be explored between the Andreae and Banwell preserves.

History: In 1983, Agnes S. Andreae donated the original 27 acres with frontage on the Pigeon River, and several additions have been purchased since then. The donation included a small cabin overlooking the river. The cabin is available for use (at no charge) by non-profit or community groups. Reservations are required by calling 231.347.0991 or online at www.landtrust.org. Hunting is not allowed here, but is allowed at the adjacent Banwell Preserve. The Nature Megaphone on the Banwell Preserve is accessible from this preserve.



Directions: From Indian River (exit 310 off I-75) take M-68 east 4½ miles. Turn left onto Old Onaway Rd. (Look for "Cochran Lake Public Access" sign). Go north on Old Onaway Rd. 1.7 miles to Riverwoods Trail and turn right. At the T intersection with Big Sky Trail, the preserve sign is ahead of you.



CHEBOYGAN COUNTY
Boyd B. Banwell Nature Preserve



Directions: From Indian River (exit 310 off of I-75) take M-68 east 5.3 miles. Look for parking area and sign on the left.



(See Andreae/Banwell map previous page)

Size: 400 acres adjacent to the Agnes S. Andreae Nature Preserve

Frontage: Nearly three miles along the Pigeon River

Land Description: A continuation of the oak/pine forests and steep bluffs above the Pigeon River that you see at the Andreae Preserve.

Trails: See map and trail description for Andreae Preserve.

History: The original 320 acres were purchased from Boyd Banwell in 2000 at a bargain sale. Since that time, the Conservancy has acquired additional parcels with more river frontage, allowing for extended trails. The Nature Megaphone was placed at this preserve in 2019.



Todd Parker

UNIVERSITY OF MICHIGAN BIOLOGICAL STATION/LITTLE TRAVERSE CONSERVANCY'S Chaboiganing Nature Preserve/Indian Point Memorial Forest

Size: 484 acres total
 - Indian Point (UMBS): 290 acres
 - Chaboiganing (LTC): 194 acres

Land Description: Entirely wooded, Indian Point includes the largest old growth red oak stand in the northern Lower Peninsula with trees up to 150 years old. The Chaboiganing Preserve is a mixture of both open fields and woodlands.

Trails: More than 2½ miles of easy trails for hiking and skiing. The Burt Lake Trail runs along the preserve. Please note that hunting is allowed on Indian Point but not on Chaboiganing.

History: In 1985, the Indian Point Forest was purchased by a sawmill and slated for heavy logging. A grassroots group spearheaded by conservationist Wendy O'Neil expressed great concern for this treasured area because of its old-growth red oak forest, one of the most significant in the Midwest. In response, LTC coordinated efforts to purchase the property with a significant grant from the Michigan Natural Resources Trust Fund. Partners included the University of Michigan Biological Station (UMBS), the Michigan chapter of The Nature Conservancy, local property owners, and citizens joining together to raise the needed funds. Indian Point is now owned by the UMBS. In 1993, LTC used donated funds to purchase 192 acres adjacent to Indian Point to form the Chaboiganing Preserve. An adjacent two acres were donated by the Pieniozek family in 2012.

NOTE: Indian Point was formerly known as Colonial Point.



Directions: Take US-31 north from Alanson 3½ miles to Brutus Road. Turn right (east) and travel 4 miles on Brutus Road. Parking lot for the Chaboiganing Preserve is across from the old Burt Lake Market. Indian Point Forest is located on the first road on the right past the preserve. The trailhead is ¼ mile east on Indian Point Road.



CHEBOYGAN COUNTY Duncan Bay Nature Preserve

Size: 145 acres

Frontage: 3,500 feet frontage on Duncan Bay/Lake Huron

Land Description: The Lake Huron coast and wetlands provide important habitat for migratory waterfowl and other water-dependent species.

Trails: The land can be enjoyed with an easy .9 mile trail loop and boardwalk leading to the shore. A short overlook platform offers wonderful views. This preserve lies along the Sunrise Coast Birding Trail and the City of Cheboygan's Bike Route.

History: A partnership effort with the City of Cheboygan, Huron Pines and the Great Lakes Restoration Initiative and Sustain our Great Lakes programs, the U.S. Fish and Wildlife, the J.A. Woollam Foundation, the North American Wetland Conservation Act program and several individual donors made the land acquisition possible starting in 2014. After countless staff and volunteer hours, the new boardwalk, bridge, and overlook platform were completed and dedicated in September, 2020.



Directions: From downtown Cheboygan, take US-23/State St. east to Duncan Avenue and turn left. Continue on Duncan Ave .8 mile. The preserve parking area and logo sign are on your left.



Adolph & Margaret Gauthier & Pauly Nature Preserve

Size: 41 acres total

- Gauthier: 38 acres

- Pauly: 3 acres

Frontage: 600 feet of frontage on Lake Huron

Land Description: The Gauthier/Pauly complex includes Lake Huron wetlands and shoreline.

Trails: Roadside parking and a short trail lead you into the Gauthier Preserve.

History: Both of these nature preserves were named after the families who once lived near or on the land here. Dawn Hambly sold the original preserve in 2005 at a significant bargain sale, naming the preserve after her grandparents. In 2020, the Pauly Preserve was donated by Virginia Bransfield in honor of her father and his family. It provides rare public access to Lake Huron.



Directions: From downtown Cheboygan at the intersection light at M23 and Main Street, take Mackinaw Avenue northwest out of town roughly .75 miles to Todd Street. Turn right on Todd Street and travel ½ mile to the roadside parking on the left.

Jack and Tucker Harris Working Forest Reserve

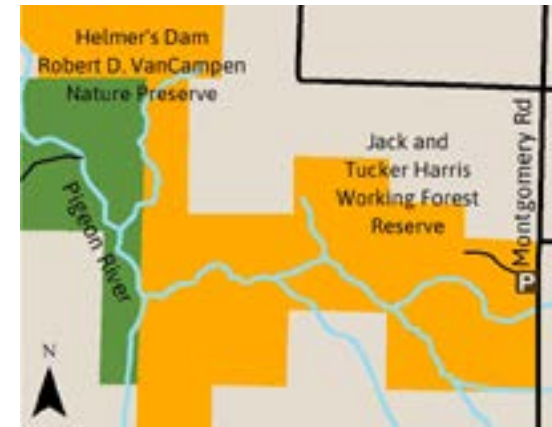
Size: 640 acres

Frontage: 6,800 feet on Wilkes Creek; 1,500 feet on Pigeon River

Land Description: A magnificent full section of land, this reserve lies within the Pigeon River watershed and adjacent to the Robert D. VanCampen/Helmers Dam Nature Preserve. It offers many different uplands and lowland habitat types and provides excellent wildlife habitat for many species. Intensive restoration is currently occurring here to help the land recover from overgrazing and the spread of invasive species. A combination of wetlands, mixed northern hardwoods, upland pine and aspen, and old farm fields exist.

Trails: A trail is in progress from the parking area toward the beautiful wetlands and Pigeon River watershed.

History: This reserve was purchased in 2016 with funding from Jack and Tucker Harris. The land had been farmed for decades, and the primary homestead had fallen into disrepair with an enormous cleanup effort removing and restoring the land back to a natural state.



Directions: From Indian River, take M-68 southeast for 8 miles and turn right on Montgomery Road. Follow Montgomery Road 3 miles just past the Brasseur Road intersection. The reserve will be on your right.



Harris-Melvin Family Nature Preserve

Size: 7 acres

Frontage: 900 feet along Burt Lake

Land Description: Mostly forested wetlands providing scenic and wetland protection as well as rare public access.

Trails: A short trail leads to an overlook platform at the lake.

History: A lead gift from the Harris and Melvin families along with several other donations - including the Burt Lake Preservation

Association and the Carls Foundation - made the 2019 protection of this preserve possible. Burt Lake is highly popular for cottages and boating and lies along the Inland Waterway. The Inland Waterway flows from Emmet County all the way to Lake Huron where it empties near Duncan Bay in Cheboygan.



Directions:

From the blinking light at US-31 and M-68 in Alanson, head east on M-68 for 3.7 miles to Ellinger Road. Turn left and travel just over a mile for roadside parking for this preserve.

Helmer's Dam/Robert D. VanCampen Nature Preserves

Size: 200 acres

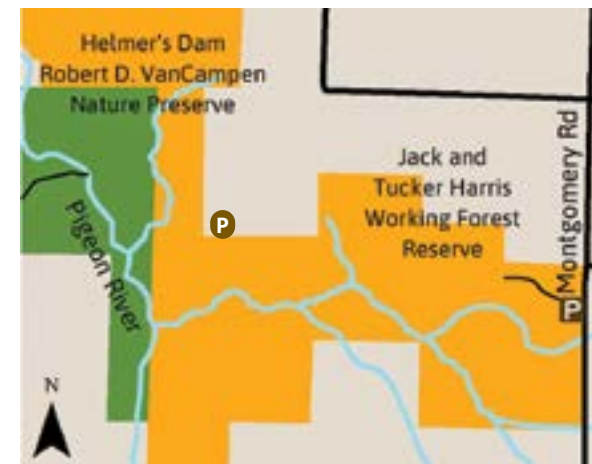
Frontage: 1¼ miles on the Pigeon River

Land Description: Before its protection, the property was the largest remaining private undeveloped stretch along the Pigeon River. Because the river becomes very wide at this point, the stretch is well-loved by anglers.

Trails: A two-track pullout is available with a short walk to the river.

History: When the property became available for purchase, a year-long fundraising campaign resulted in its acquisition as a nature preserve in 2003. The preserve is partly named for an old dam that used to exist at the site. John Woollam, a primary donor, also named the preserve in honor of his father-in-law, Robert D. VanCampen of Harbor Springs, an avid hunter, fly angler, and outdoorsman. This preserve lies adjacent to the Jack and Tucker Harris Working Forest Reserve on two sides.

Directions: From the intersection of M-68 and I-75 in Indian River, take M-68 southeast 5½ miles to Afton Road. Turn right and travel 1.3 miles to the preserve on the left at the intersection with Cut-Off Road.



Hildner-Bearce/Waubun/Davis Nature Preserves

Size: 46 acres total

- Hildner-Bearce: 11 acres
- Waubun: 16 acres
- Davis Family: 19 acres

Land Description: Dominated by oak, maple, and beech forests this perched habitat is close to Burt Lake.

Trails: A few loops wind along the upland forest.

History: The original preserve was donated in 2008 by Gretchen Bearce. In 2012, local fundraising helped create the adjacent Waubun Preserve. And in 2021, the Davis Family helped LTC acquire the most recent addition to this complex.



Directions: From Indian River drive north on S. Straits Hwy. (M27). Cross the bridge and take your first left onto Prospect St. which becomes Chippewa Beach Rd. Drive 2.9 miles past the Seven Springs Preserve and the Hildner-Bearce Preserve logo sign and one-car parking area will be on the left. Trailheads can be found on both sides of the road from here. (Waubun logo sign and trailhead are across the road from Hildner-Bearce.)

Barbara C. Hoffius Nature Preserve

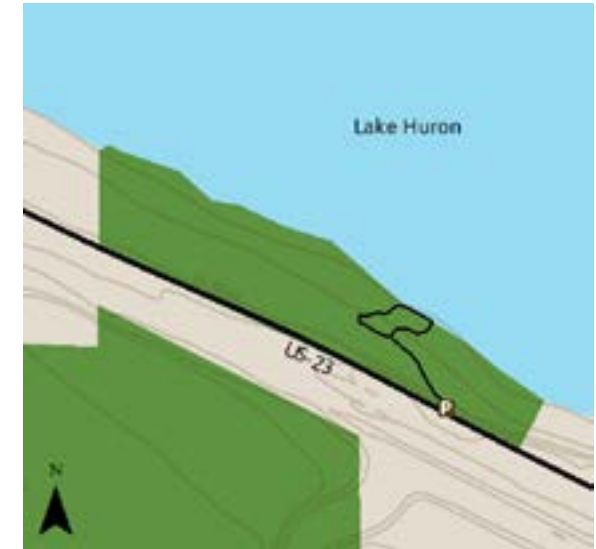
Size: 600 acres

Frontage: 2,000 feet along Lake Huron and along US-23.

Land Description: Located between Cheboygan and Mackinaw City, the majority of this preserve is wooded uplands and occasional wetlands.

Trails: A short (less than half a mile) trail takes you from the parking area down to the rocky Lake Huron shore. The paved North Central State Trail cuts through this preserve as it parallels US-23.

History: The majority of this preserve was donated in 2016 by brothers Dirk and Stephen Hoffius and is named after their mother. A small but significant shoreline addition was purchased in 2017.



Directions: From the intersection of US-27 and US-23 in Cheboygan, head northwest on US-23 for 7.3 miles and look for the preserve sign on the right. From Mackinaw City, take US-23 southeast of town, just under 8 miles.



CHEBOYGAN COUNTY
Reed's Pigeon River Nature Preserve

Size: 110 acres

Frontage: A mile along the Pigeon River

Land Description: This land is a mix of wooded and open terrain that has been managed to encourage wildlife. Beaver activity has created flooding problems over the years.

Trails: Roughly 1¼ miles of trails wind through the preserve and lead to the river. Kayaking or canoeing require a short portage, but this preserve can be a drop off or take out point along the Pigeon River.

History: Donated by Lois Ann Reed in 2007 and a cabin was removed from the preserve.



Directions: From Indian River, head southeast on M-68 six miles to Afton Road and turn right. Continue on Afton Road south for three miles. Turn left onto Pigeon River Road. The preserve will be approximately ½ mile down on your right with rustic parking.



CHEBOYGAN COUNTY
Seven Springs Nature Preserve

Size: 66 acres

Frontage: 2,902 feet along Burt Lake

Land Description: Numerous natural springs along the shore provide habitat for endangered species. Beautiful upland forest graces this preserve's upper portions while dense forested wetlands can be found below the dramatic bluff. The waveswept shore consists of cobble beaches and beds of emergent rushes providing quality habitat for fish and other aquatic life.

Trails: A local favorite for views, hiking, and swimming. There are 1.2 miles of trails and a lake overlook.

History: The Harris and Weiss families of Columbus Beach initiated this preserve's creation with the initial protection of more than 50 acres in 1994. These families coordinated fundraising with several families from Columbus Beach as well as many Burt Lake residents and resorters. Additional acreage was added in 2017, 2019, and 2020.



Directions: From M-27/75 in Indian River, turn west onto Prospect Road, just north of the bridge. Continue straight onto Chippewa Beach Rd. 1.1 miles. Look for the preserve sign on the left, about ¼ mile past the curve.



Vivian VanCampen Memorial Nature Preserve

Size: 56 acres

Frontage: 3,562 feet of frontage on the Pigeon River

Land Description: This preserve greatly adds to the land protection offered by nearby and adjoining preserves and conservation easements. A beautiful place to fish or enjoy the Pigeon River.

Trails: Two trails are found on this preserve, one which gets you to and along the river.

History: When a favorite fishing spot on the Pigeon River was suddenly slated for a riverside development, locals reached out to LTC. Acquired between 2008-2010, the land's protection was made possible by the J.A. Woollam Foundation, the family of Vivian VanCampen, the Mullett Lake Area Preservation Society, and individual donors. The previous donors let the public use the land for fishing access, and many of these historic foot paths have been preserved.



Directions: From the intersection of M-68 and I-75 in Indian River, head southeast on M-68 for 8½ miles. Turn right on Afton Road and travel .8 mile to Haz Dr. Take a right and travel .6 mile to rustic parking on the left.



CHEBOYGAN COUNTY - FEATURED ASSIST Lee Grande Ranch - State of Michigan



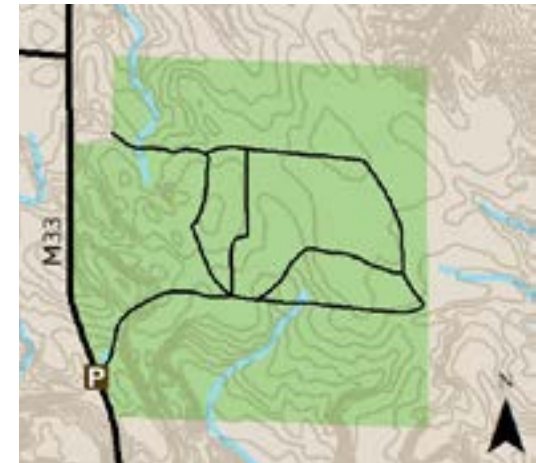
Size: 2,434 acres

Frontage: 4,780 feet on Stony Creek

Land Description: Formerly a buffalo ranch, this diverse land is now one of only two GEMS (Grouse Enhanced Management Sites) in the Lower Peninsula. These sites are intensively managed, accessible and walk-in ruffed grouse hunting areas. Lee Grande Ranch offers a mixture of woods, open fields, creeks, and ponds.

Trails: A network of criss-crossing non-motorized trails allow for low-impact recreation including cross-country skiing, horseback riding, and hunting.

History: In 2007, LTC held this magnificent land in trust for the State of Michigan in the first such arrangement for the state. A conservation easement was also placed on the land. The land is now owned and managed by the State.



Directions: From the intersection of M-68 and I-75 in Indian River, take M-68 east for 9 miles. Turn left on M-33 and travel 3.4 miles to a sign on the right.



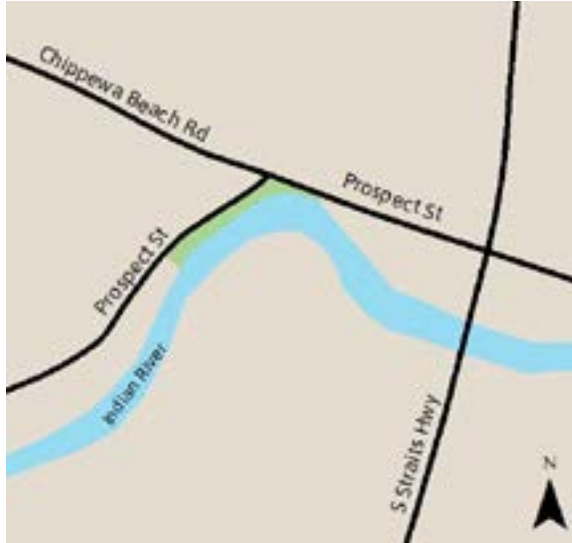
CHEBOYGAN COUNTY - FEATURED ASSIST
Tuscarora Township Park

Size: 4 acres

Frontage: 1,183 feet on Indian River

Land Description: This is a public access park in the village of Indian River that provides access to the Inland Waterway. Picnic, swimming, and public restrooms are available.

History: In 2000, LTC prequired this property, allowing Tuscarora Township to apply for and receive a grant from the Michigan Natural Resources Trust Fund. The township now owns and manages this site.



Directions: From downtown Indian River, follow Straits Hwy. north until you cross the river. Turn left on Prospect Street and turn left to park.



Other Cheboygan County Preserves, Working Forest Reserves (WFR), Transfer & Assist Projects

Those without maintained parking areas and trails (as of April, 2022).

For more details, visit the interactive map at www.landtrust.org/explore.

NAME	ACREAGE	YEAR	TOWNSHIP
Bair Family	1 acre	2017	Tuscarora Township
Bear Saw Creek	17 acres	2002	Burt Township
Bessey Creek	.5 acre	1989	Munro Township
Caroline and Willis Brown	22.6 acres	2020	Grant Township
Cain's Creek Swamp	25 acres	2007	Grant Township
Donnie Doan & Dee Engwis Families	22 acres	2019	City of Cheboygan
Robert Fergus Memorial	16 acres	2000	Tuscarora Township
G.C.	20 acres	2013	Aloha Township
Adolph and Margaret Gauthier	38 acres	2005	City of Cheboygan
Giauque	1 acre	1991	Mullet Township
Eva and Vern Hanel, Jr.	20.3 acres	2009	Nunda Township
John J. Helstrom Preserve at Mud Lake Bog	34 acres	2020	Inverness Township
Judson Pike Marsh	56 acres	1986	Munro Township
Charles and Alice LaHaie	42 acres	2017	Benton Township
Michigan Wildlife Foundation	40 acres	2011	Ellis Township
Needle Point	40 acres	1990+	Aloha Township
Niiwin Ziingaaak	50 acres	2014	Burt Lake Township
Wendy O'Neil Memorial	204 acres	1999+	Inverness Township
Parker & Ebbers	22 acres	2020	Burt Township
Aaron J. and Adrienne N. Pieniozek	2 acres	2012	Burt Township
Pigeon River Wildlife	40 acres	1982	Walker Township
Fred Prince	30 acres	2015	Waverly Township
Reed's Alverno	160 acres	2008	Benton Township
Roberts Family	34 acres	2018	Munro Township
Harry C. Smith	72 acres	2007	Hebron Township
Sturgeon Bay	40 acres	1995	Burt Township
Tromble Family	39 acres	2020	Inverness Township



Mackinac County

page

1	Birge/Mertaugh/Nye/Wallace	79
2	William B. Derby, Jr.	80
3	Marquette Island Preserves	81
4	St. Helena Island	82

Featured Transfer/Assist Project

5	Hessel Beach	83
---	--------------	----

Other Nature Preserves &

	Working Forest Reserves	90
--	-------------------------	----

Chippewa County

page

6	Bailey-Lagerstrom	84
7	DeTour Peninsula	85
8	Round Island Point	86
9	Vermilion Point	87
10	Clyde and Martha Williams	88

Featured Transfer/Assist Project

11	Crisp Point	89
----	-------------	----

Other Nature Preserves &

	Working Forest Reserves	90
--	-------------------------	----



DeTour Peninsula Nature Preserve

MACKINAC COUNTY

Birge/Mertaugh/Nye/Wallace Nature Preserves

Size: 889 acres

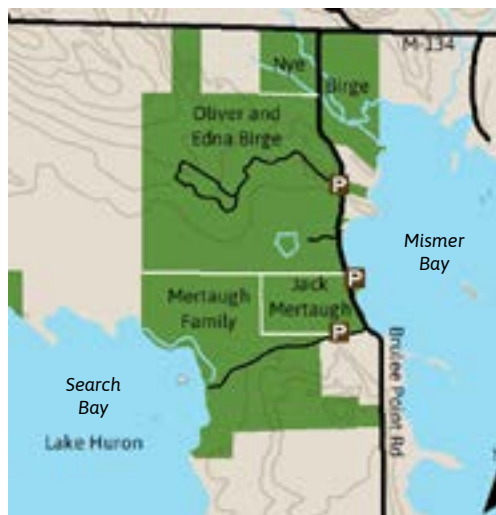
Frontage: Almost three miles of frontage on Lake Huron along Mismar Bay and Search Bay.

Land Description: This preserve complex includes an impressive complex of cedar wetlands, hardwoods, a small lake, and more than 6,400 feet of frontage on Mismar Bay. The northern Lake Huron shoreline is some of the most biologically productive habitat in Michigan. A short trail to Loon Lake provides opportunities to see beaver, bald eagle, osprey, and many other mammals and birds. Abundant native wildflowers including orchid, gentian, aster, marsh marigold, Indian paintbrush, and iris can all be found throughout the preserves.

Trails: There are three parking areas and three different trails. The northerly parking area provides access to a 2-mile long trail which traces an historic road bed and then ventures into the forest. Further to the south, a quarter mile trail and boardwalk leads to the Loon Lake viewing platform. The Mertaugh Addition parking area is on the east side, and has a bench overlooking Mismar Bay. A third trail leading to Search Bay is available from the most southerly parking area.

History: The original 171-acre preserve on Point Brulee was donated to the Conservancy from long-time Hessel residents Oliver and Edna Birge in 1992. According to Oliver, the old wheel road crossing the property is a section of the oldest road in the area. Since that time, 9 parcels have been added to this complex to create one of LTC's largest complexes of lands with frontage on a Great Lake.

Todd Parker



Directions: From the Mackinac Bridge, follow I-75 north about 14 miles to M-134. Take M-134 east 11 miles and turn right on Pt. Brulee Road. (From Hessel take M-134 west 2.4 miles to Pt. Brulee Road). On Pt. Brulee, travel .7 mile to Wheel Road trailhead parking (on right) or go 1.1 miles to shoreline parking area on left. The Loon Lake trailhead is about halfway between the two parking areas.



MACKINAC COUNTY
William B. Derby, Jr. Nature Preserve



Directions: From M-134, head south on Four Mile Block Road to Club Road. Take a right on Club Road and travel half a mile. Look for signs on the right and parking area is a little further up on the left. You will have to hike back to the preserve trail entrance less than 100 yards.



Size: 207 acres

Frontage: More than a mile along Lake Huron

Land Description: Located just a short distance from downtown Cedarville, this preserve is LTC's most visited preserve in the Les Cheneaux region. The land is dominated by cedar trees and the hummocky topography is interspersed with numerous very large, moss-covered boulders. Because they consist largely of limestone/dolomite, the rocks are permeable and many provide substrate for plants to grow from them. It is a magical place for a hike.

Trails: A nearly 3 mile trail loop. Public parking is available for the preserve on Club Road thanks to the Les Cheneaux Club and Les Cheneaux Community Foundation.

History: This preserve was named after the landowner who sold it to the Les Cheneaux Foundation which then donated it to LTC in 2006. One of the trail loops takes you along "The Snows" channel, an excellent place to bird, and a stopover point for kayakers who want to come ashore on the preserve. The Derby Preserve is a designated stop along the North Huron Birding Trail: www.northhuronbirding.com.

MACKINAC COUNTY
Marquette Island Nature Preserves

Sizes: 1909 acres

- Aldo Leopold Preserve: 1,683
- Sheppard-Hardy: 21.4
- Catherine Seiberling Stewart: 192
- Wilderness Bay: 13

Frontages: Nearly 5 miles of Lake Huron frontage combined.

Land Description: In 1993, the northern shore of Lake Huron was designated as a "Last Great Place" by The Nature Conservancy, a global leader in natural lands conservation. The Les Cheneaux region is at the very heart of this "natural wonder of the world."

Trails: Accessible only by boat (or over the ice in winter) with the easiest access to the Aldo Leopold Preserve through Leopold Landing at Duck Bay. Through the preserves, you can explore the shore, bushwhack through dense conifer forests, or travel along footpaths and two-track roads.

History: None of the Marquette Island preserves would have been made possible without the generosity, perseverance, and love of the islands shown by many including the J.A. Woollam Foundation, the Les Cheneaux Foundation, Les Cheneaux Club, and many others. Significant funding for the Seiberling Stewart Preserve was provided through the North American Wetland Conservation Act Program.



Directions: From the Mackinac Bridge, follow I-75 north about 14 miles to M-134. Take M-134 east 13 miles to Hessel. You can reach the islands from launches in Hessel or further east in Cedarville. Only accessible by boat.



MACKINAC COUNTY
St. Helena Island Nature Preserve

Size: 266 acres

Frontage: 2.84 miles of Lake Michigan shoreline

Land Description: When crossing the Mackinac Bridge, look west and the largest island visible (about 7 miles away) is St. Helena. In The Michigan Botanist, Ed Voss reported that he had documented 332 (!) vascular plant species on the island. The shore is rocky.

Trails: A rough trail connects the lighthouse to the old village site on the north side of the island. (This trail is sometimes impassable due to poison ivy.) The Beach Trail, established in 2010, leads along the south side of the island and follows an old ridge running parallel to the shore.

History: In 2001, LTC acquired the entire island except for the lighthouse and three acres which are owned by the Great Lakes Lighthouse Keepers Association (GLLKA). Funding came from the North American Wetlands Conservation Act program as well as the J.A. Woollam Foundation, Offield Family Foundation, and Mike and Rhea Dow.



Directions: Access limited to boat travel. Nearest boat ramps are St. Ignace, Point La Barbe, and Mackinaw City. Anchor a boat or land a kayak at the sheltered bay near old village site on north side of the island. GLLKA offers a variety of ways to get to the island: www.gllka.org or 231.436.5580.



MACKINAC COUNTY - FEATURED ASSIST PROJECT
Hessel Beach - Clark Township

Size: .3 acre

Frontage: 200 feet of Lake Huron shoreline in Hessel, Les Cheneaux

Land Description: This township park offers free parking, a place to carry kayaks and canoes to the water, a swimming beach, and public restrooms. This is an excellent access point for paddlers who are headed out to LTC's Marquette Island preserves. The beach is also located just down the street from the local outfitter, the Hessel public marina and the Les Cheneaux Culinary School.

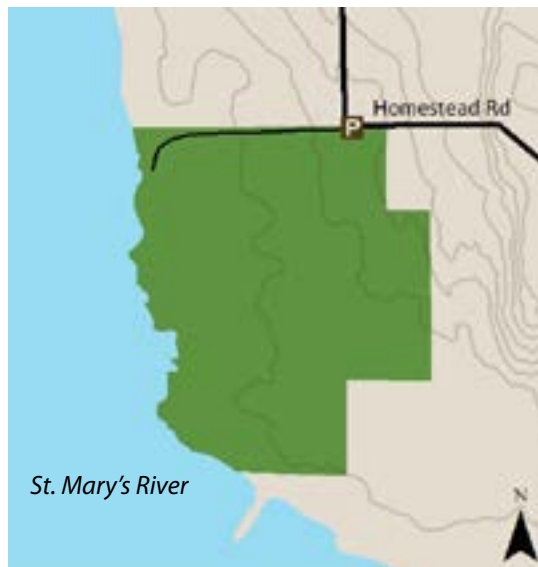
History: LTC assisted Clark Township in acquiring this beach in 1994 with a grant from the Michigan Natural Resources Trust Fund.



Directions: From the corner of M-134 and S. Pickford Ave./3 Mile Road, go south into downtown Hessel about two blocks until the street ends at the public marina. Turn right onto Lake Street and in about 600 feet you will find street level parking on the left.



CHIPPEWA COUNTY - SUGAR ISLAND
Bailey-Lagerstrom Nature Preserve



Size: 422 acres

Frontage: More than two miles of St. Mary's River frontage.

Land Description: The Bailey-Lagerstrom Preserve is one of LTC's largest, most wild, and remote nature preserves. Located within the St. Mary's River migration corridor, its pristine wetland and shoreline habitats make it important for migratory birds and wildlife.

Trails: Despite its remoteness and lack of "traditional" trails, this preserve is relatively easy to access. From the parking area, hike on an old road. If you make it beyond the beaver dam pond, the road curves to the left near the shore, and you can cut west through the woods to the rocky Lake Nicolet shoreline or continue walking south on the old road.

History: Acquired in 2004 as three separate projects, the purchase of this nature preserve was funded by the J.A. Woollam Foundation, the North American Wetland Conservation Act (NAWCA) program, and Michigan Audubon. The preserve was named in honor of Tom Bailey and Tom Lagerstrom, Little Traverse Conservancy's former long-time Executive Director and Associate Director.



Directions: From downtown Sault Ste. Marie, travel east to the Sugar Island ferry. Once on the island, drive 3.7 miles east on 1½ Mile Road. Turn right on Brasser Road. Drive 11 miles south on Brasser (which turns into Homestead Road after about 4.5 miles). The parking area is on Homestead Road on the right at a big curve. Give yourself at least 15 minutes to get back to the ferry. The ferry returns to the mainland on the hour and half hour.



Kyle Anderson

CHIPPEWA COUNTY
DeTour Peninsula Nature Preserve

Size: 145 acres

Frontage: More than three miles of Lake Huron shoreline

Land Description: Jutting down into Lake Huron, this preserve includes the rich diversity that typifies northern Lake Huron: sand and gravel beach, limestone cobble shore, boreal forest, rich conifer swamp, emergent marsh, and coastal fen. The land lies within a major migration corridor centered on the St. Mary's River.

Trails: A two-track road, Point Road, runs through the preserve to private land on the tip of the peninsula and is open to foot traffic. A small parking area is available at the end of Point Road.

History: This preserve was anonymously donated to LTC in 2011.



Directions: From DeTour, head south one mile on M-134. Turn left onto Point Road. Drive .6 mile to park-



Charles Dawley

CHIPPEWA COUNTY Round Island Point Nature Preserve

Size: 1,026 acres

Frontage: 9,000 feet on Lake Superior

Land Description: This large block of protected habitat in the Upper Peninsula provides excellent wildlife habitat for black bear, wolf, moose, bobcat, and others. The property lies within a major flyway for migrating waterfowl and other birds.

Trails: A 1½ mile inland trail and viewing area are accessible from the parking area. The road to the parking area is not fully plowed in the winter and you will hike for roughly ½ mile before you access the trail loop.

History: The original 460 acres was donated to the Michigan chapter of The Nature Conservancy (TNC) by the Finlayson family. In 2000, TNC transferred the land to LTC and since then, LTC fundraised to purchase several additions.

Directions: From Sault Ste. Marie, head south on I-75 to exit 392. Travel approximately 1 mile and turn left (south) on 20th Street (S. Bakerside Road) and travel 3 miles. Turn right on 6 Mile Rd. Go 5 miles and turn right (north) on Birch Point Rd. (east loop). Go ½ mile and look for logo and directional sign on right. Turn right onto paved road. Follow one mile to parking and trailhead.



John Heck/www.johnheckphotography.com

CHIPPEWA COUNTY Vermilion Point Nature Preserve

Size: 175 acres

Water frontage: 9,240 feet along Lake Superior

Land Description: Vermilion is defined by the majesty and moods of Lake Superior and its remote location. It contains a wide sandy beach, low shore dunes, upland forest, old cranberry bog wetlands, and a stream. Ecologically, the land is known habitat for the federally endangered piping plover.

Trails: A dirt road takes you to a parking area where easy access to the beach is available. Look for the marked trail when you walk between the historic buildings.

History: This spectacular property was protected in February 2007 thanks to a bargain sale from Evan Noyes and his Wildshore Foundation and grants from the J.A. Woollam Foundation and the North American Wetland Conservation Act program. Historically, this property and its associated buildings were a life saving station first built in 1876. S.O.S. Vermilion is a non-profit group working to protect the historic life saving station

building since years of neglect and harsh Lake Superior weather have taken a toll on the buildings. Researchers from Lake Superior State University, The Nature Conservancy, and Michigan Audubon use the property to study the piping plovers as well as other birds, and the wetlands.



Todd Parker

Directions: From Paradise, head north on Whitefish Point Road for 5.2 miles. Turn left on Vermilion Road. The seasonal road will quickly become gravel and sand and four-wheel-drive is highly recommended. In .6 mile from turnoff, be sure to stay right at the "Y" on Vermilion Road and continue on straightest road for more than 7 miles until you reach the preserve parking. If road is flooded, there is alternative parking near a logo sign.



CHIPPEWA COUNTY - DRUMMOND ISLAND
Clyde and Martha Williams Nature Preserve



Size: 80 acres

Land Description: The Williams Preserve is mostly forested. Upland mixed hardwood/conifer stands include white pine and hemlock; northern hardwood stands dominated by beech and maple as well as ash, ironwood, basswood, and balsam fir; and lowland areas dominated by cedar, balsam fir, and paper birch. Fallow agricultural fields are present in small areas. Soils in some areas are flat and sandy, and very rocky in others, with some large boulders. Fissured bedrock is visible at the surface in some spots. Ancient post-glacial lake shorelines are evident on the preserve. An old stone wall built by early Island settlers is located in the east part of the preserve.

Trails: An easy 1.3 mile trail loops through beautiful forests with glacially deposited boulders throughout. This preserve lies along the North Huron Birding Trail: www.northhuronbirding.com.

History: This preserve was purchased in 2006 at a bargain price and named after the sellers' parents.



Directions: From DeTour, take the ferry to Drummond Island. Drive onto M-134/East Channel Road for 7.9 miles. Turn left at South Townline Rd. Travel 1.5 miles to Drummond Road/East Maxton Rd. Turn right and go ½ mile to the preserve on the left.



CHIPPEWA COUNTY - FEATURED ASSIST PROJECT
Crisp Point - State of Michigan

Size: 3,810 acres

Frontage: 2½ miles on Lake Superior and 1½ miles along Brown Lake

Land Description: The land offers enhanced recreational opportunities for many, including those who visit the Crisp Point Lighthouse, which is located adjacent to the tract. The inland portions of the forest are managed for long-term sustainability, and the dune and beach areas are protected so that generations to come may enjoy the dunes and the great variety of wildlife found there, including several threatened and endangered species.

Trails: Short trails near the lighthouse and visitors center. For more details, visit www.crisppointlighthouse.org.

History: Starting in the late 1980s, Tad Malpass pieced together several parcels to create what is now Crisp Point. When he was ready to sell the land, he wanted to ensure it was protected. A partnership began with Malpass, LTC, longtime land conservationist John Woollam, the Michigan DNR, and the U.S. Forest Service. In 2012, the land officially came under ownership of the State of Michigan. Today, we can walk the beautiful Lake Superior shore where members of the Life Saving Service and later the U.S. Coast Guard once walked on stormy nights between stations at Crisp Point and Vermilion Point, as they watched for ships in danger. Today we can savor the beauty and power of the lake and the wild, rugged loveliness of this beautiful land that is now permanently protected.



TMPetersen



Directions: Visit www.crisppointlighthouse.org for the best driving directions to this remote location.



Other Cheboygan County Preserves, Working Forest Reserves (WFR), Transfer & Assist Projects

Those without maintained parking areas and trails (as of May, 2022)

For more details, visit the interactive map at www.landtrust.org/explore.



NAME	ACREAGE	YEAR	TOWNSHIP
MACKINAC COUNTY			
Cedarville Bay	5 acres	2012	Clark Township
Gros Cap	2 acres	2008	Moran Township
Mackinac Bay	22 acres	1994	Clark Township
Martin and Reinhardt Jahn Family	165 acres	2016	Bois Blanc Township
Poupard Bay	1 acre	1995	Mackinac Township
Search Bay	25 acres	2008	Clark Township
Vosper	114 acres	2003+	Bois Blanc Township
Young-Montgomery	2 acres	2007	Clark Township
CHIPPEWA COUNTY			
Curtis and Margaret Anderson	45 acres	2009	Drummond Township
Anna Badgley-Little Trout Lake	26 acres	1991+	Trout Lake Township
Barb's Beach	16 acres	2014	Whitefish Township
Chippewa County WFR1	264 acres	2015	Sugar Island
Chippewa County WFR2	200 acres	2015	Sugar Island
Chippewa County WFR3	110 acres	2015	Sugar Island
Chippewa County WFR4	80 acres	2015	Sugar Island
Chippewa County WFR5	120 acres	2015	Sugar Island
Chippewa County WFR6	40 acres	2015	Sugar Island
Clark Island	6 acres	1993	Sugar Island Township
Cook Island	18 acres	2019	Drummond Township
Fabiano Family WFR	1,400 acres	2017	Raber Township
Forslund Dix Point	56 acres	2018	Drummond Island Township
James V. Foster Hartley Lake	160 acres	2012	DeTour Township
John J. Helstrom at Shelldrake River	16 acres	2017	Whitefish Township
Hobbins-Meyer	220 acres	2005	City of Sault Ste. Marie
Iroquois Island	6 acres	2010	Bay Mills Township
Koren	20 acres	1996	Sugar Island Township
Elise M. Kummer	582 acres	2021	DeTour Township
Little Leaf	37 acres	2020	Dafter Township
Bill Marks WFR	10 acres	2015	Sugar Island Township
James Donaldson Moore	40 acres	2009	City of Sault Ste. Marie
Muir Woods	61 acres	1986	Trout Lake Township
Jinny Palms Wildlife	360 acres	2001	Whitefish Township
Ambrose and Wanda Pozniak Family	5 acres	2016	Trout Lake Township
Pickering-Hay Point	85 acres	2003	Sugar Island Township
Seymour Bay	20 acres	2007	DeTour Township
Trout Family	19 acres	2019	Trout Lake Township
Twin Island	2.5 acres	2010	Raber Township
Ellen Elliot Weatherbee	.5 acre	2015	DeTour Township
Whitney Bay	93 acres	2021	Drummond Township



Little Traverse Conservancy
3264 Powell Road
Harbor Springs, MI 49740
231.347.0991
ltc@landtrust.org
www.landtrust.org



Protecting the North Country We All Love

Our personal and collective physical and mental health are in direct correlation to the health of the natural world around us.

*Thank you for helping the Little Traverse Conservancy
protect this North Country that we all love!*

