



LITTLE TRAVERSE CONSERVANCY

2022 ANNUAL REPORT

THE LTC TEAM

YOU, Our member
Our volunteers

BOARD OF TRUSTEES

Cedric A. (Rick) Richner, III, *Chair*
Phil Porter, *Vice Chair*
Jon Lyons, *Treasurer*
Karie Slavik, *Secretary*

Josh Baker	Tom Litzner
Lisa Blanchard	Lisa Loyd
Richard M. Bolton	Glen Matthews
Michael T. Cameron	Harriet McGraw
George M. Covington	John Merrill
Mary Faculak	Emerson Meyer
Jeffrey S. Ford	Maureen Nicholson
Gregg K. Garver	Consie Pierpont
John Griffin	Bill Roney
Eric Hemenway	Tom Rowland
Joe Kimmell	R. Ham Schirmer
Dave Kring	Meg Sprow
Darrell Lawson	Susan I. Stewart
Nancy Lindsay	

STANDING COMMITTEE CHAIRS

Mary Faculak, *Land Protection*
Gregg K. Garver, *Stewardship*
John Merrill, *Education*
Phil Porter, *Nominating*
Jon Lyons, *Investment*

LAND PROTECTION

Caitlin Donnelly, *Director*
Joe Graham, *Land Protection Specialist*

ENVIRONMENTAL EDUCATION

Sarah Mayhew, *Director*
Sarah Koetje, *Education Specialist*

STEWARDSHIP

Derek Shiels, *Director*
Melissa Hansen, *Director of Conservation Easements*
Charles Dawley, *Technology and Stewardship*
Mike Lynch, *Preserve Stewardship*
Amy Lipson, *Conservation Specialist*
Brad Von Blon, *Stewardship Technician*

VOLUNTEER COORDINATOR

Cacia Lesh

EXECUTIVE DIRECTOR

Kieran Fleming

CHIEF FINANCIAL OFFICER

Thomas Lagerstrom

CHIEF DEVELOPMENT OFFICER

Emily Hughes

DEVELOPMENT ASSOCIATE

Lindsay Hall

ADMINISTRATIVE COORDINATOR

Sarah Gurney

COMMUNITY OUTREACH AND COMMUNICATIONS

Anne Fleming

A Message from the Board Chair, Cedric Richner

Thank you for everything you do for LTC! We are humbled by the many ways you continue to invest in our mission through contributions of your time, talent, and financial resources.

For thousands of years, this beautiful region we all love has been inhabited by people trying to strike a balance between respecting the land and using its resources wisely. In a sense, we can think about the history of the area in terms of eras with each generation facing myriad challenges and opportunities.

In many ways, the last 50 years could be described as the LTC era when a group of thoughtful citizen leaders put into motion a renewed commitment to protect what we all love about this region in sustainable and lasting ways. Today, the results of their founding vision and five decades of member and volunteer support are nothing short of remarkable. More than 68,000 acres among five of Michigan's most beautiful counties remain in their natural state. More than 25,000 of these acres are directly under LTC's ownership, giving us the opportunity to care for the land on a very meaningful landscape level. And we are now seeing children in our environmental education programs whose parents participated when they were of school age.

For the past five years, LTC has been operating under a strategic plan, and its goals included lofty land protection, stewardship, environmental education, and membership goals. I'm pleased to report that we surpassed - or will soon surpass - all of these goals. Almost 10,000 new acres including amazing new places like the Offield Family

Viewlands have been permanently protected in that time. Our trail system has expanded to over 100 miles of hiking and biking trails including a new destination in the mountain bike enhanced trails at the Tanton Family Working Forest Reserve. And literally thousands of kids are learning to appreciate the outdoors through our environmental education programming that is offered free of charge to the schools in our service area.

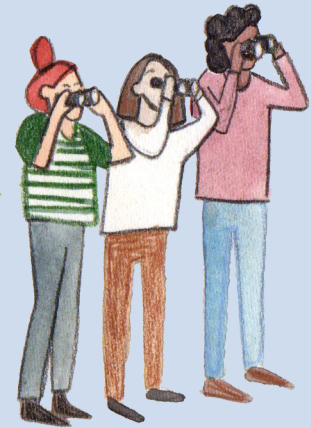
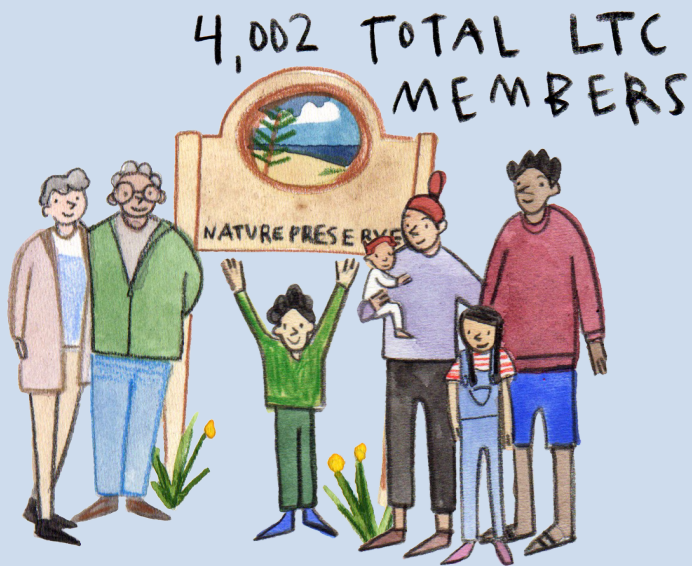
Now that the current strategic plan is winding down, the questions rise before us: What will our next era look like? How do we strike the right balance between our steadfast mission and the changing needs and wants of our communities? When future generations look back, what will they say about how we handled our moment in time?

Your Board of Trustees is just beginning to wrestle with these questions, and many others, to ensure that the legacy of thoughtful stewardship of our land continues. While we are just at the beginning stages of this work, we intend to engage and involve you, our members, in the process of envisioning. Stay tuned and thanks again for all you do to support our vital mission.

- Cedric Richner, Board Chair



YOUR GIFTS IN ACTION!



42 COMMUNITY
FIELD TRIPS

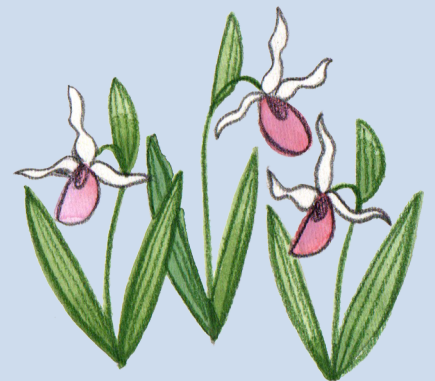


16,995 TREES &
WILDFLOWERS PLANTED

6 NEW TRAILS
TOTALING
2+ MILES



2,467 STUDENTS PARTICIPATED IN
ENVIRONMENTAL
EDUCATION
PROGRAMS



1,360 ACRES
PROTECTED

EMMET COUNTY LAND PROJECTS

1. JOHN SIEGEL NATURE PRESERVE

93 acres | Carp Lake Township

Neighbors, led by Michael and Brenda Byers, joined together to fund this significant bargain sale from the previous landowner. This preserve is located south of the William and Stephanie Veling Nature Preserve.

2. KRAPOHL FAMILY NATURE PRESERVE

34.5 acres | McKinley Township
846 feet on Van Road

This donated preserve consists of lowland forest dominated by early succession aspen. Named after the donor's family who had done previous conservation work with LTC. Lies adjacent to the Bryan Wildlife Nature Preserve and in close proximity to Douglas Lake.

3. ELIZABETH J. GARVER NATURE PRESERVE

10 acres | West Traverse Township
275 feet on Five Mile Creek

Adjacent to the Seberon "Boo" Litzenburger Nature Preserve, this preserve was named in honor of the mother of the former landowners, Ken Garver and Susan Lightfoot. Funding for this bargain sale was made possible by Hank and Liesel Meijer.

4. BRIAN LEONARD GRANGER NATURE PRESERVE

31 acres | Little Traverse Township
594 feet on Northwestern State Trail

Adjacent to LTC's Sally & Art Hailand, Jr. and Helstrom Family Nature Preserves, this preserve is mostly mixed conifer and hardwood forest interspersed with forested wetlands. Fundraising is ongoing, your support is welcome!

5. ADDITION TO WOOLLAM FAMILY NATURE PRESERVE

3 acres | Cross Village Township
300 feet on Lake Michigan

Expanding an incredible shoreline preserve, this addition was funded by the J.A. Woollam Foundation.

6. ADDITION TO BLACK HOLE NATURE PRESERVE

6 acres | Littlefield Township
870 feet on Pickerel/Crooked Lakes channel

This grassroots campaign, in partnership with PCLA and the Carls Foundation, brought 139 families together to make this addition to the Black Hole Nature Preserve possible.

7. ADDITION TO FIVE MILE CREEK NATURE PRESERVE

6 acres | West Traverse Township
310 feet on M-119

Originally protected with a conservation easement, this inholding within the Five Mile Creek Nature Preserve is now part of the preserve thanks to five LTC families.

CONSERVATION EASEMENTS:

An additional 125 acres in Emmet County were protected on private lands in 2022 with conservation easements (locations not disclosed on map).





Addition to the Black Hole Nature Preserve



Addition to the Woollam Family Nature Preserve
PROTECTING THE NORTH COUNTRY WE ALL LOVE | 5

CHARLEVOIX COUNTY LAND PROJECTS

1. RICHARD AND SADIE BARTOSIK NATURE PRESERVE

107 acres | Norwood Township

Originally protected with a conservation easement, Sadie Bartosik donated this land in 2022 to become a permanent nature preserve. She and her husband Richard lived and farmed here for decades.

2. ADDITION TO DRESSSEL NATURE PRESERVE

3 acres | East Jordan Township

620 feet on Jordan River

Nestled between the Dressel and Jordan River Sedge Marsh Nature Preserves and just north of the Rogers Family Homestead Nature Preserve, this preserve addition lies in view of an active Bald Eagle nest along the Jordan River.

3. ADDITION TO CONN'S COVE NATURE PRESERVE (Beaver Island)

26 acres | Peaine Township

660 feet on Lake Michigan

Originally protected with a conservation easement, this property was sold to the Conservancy at a bargain sale. Like all Beaver Island projects, this majestic preserve was made possible through generous neighbor support.

4. ADDITION TO ST. CLAIR LAKE/SIX MILE LAKE NATURAL AREA

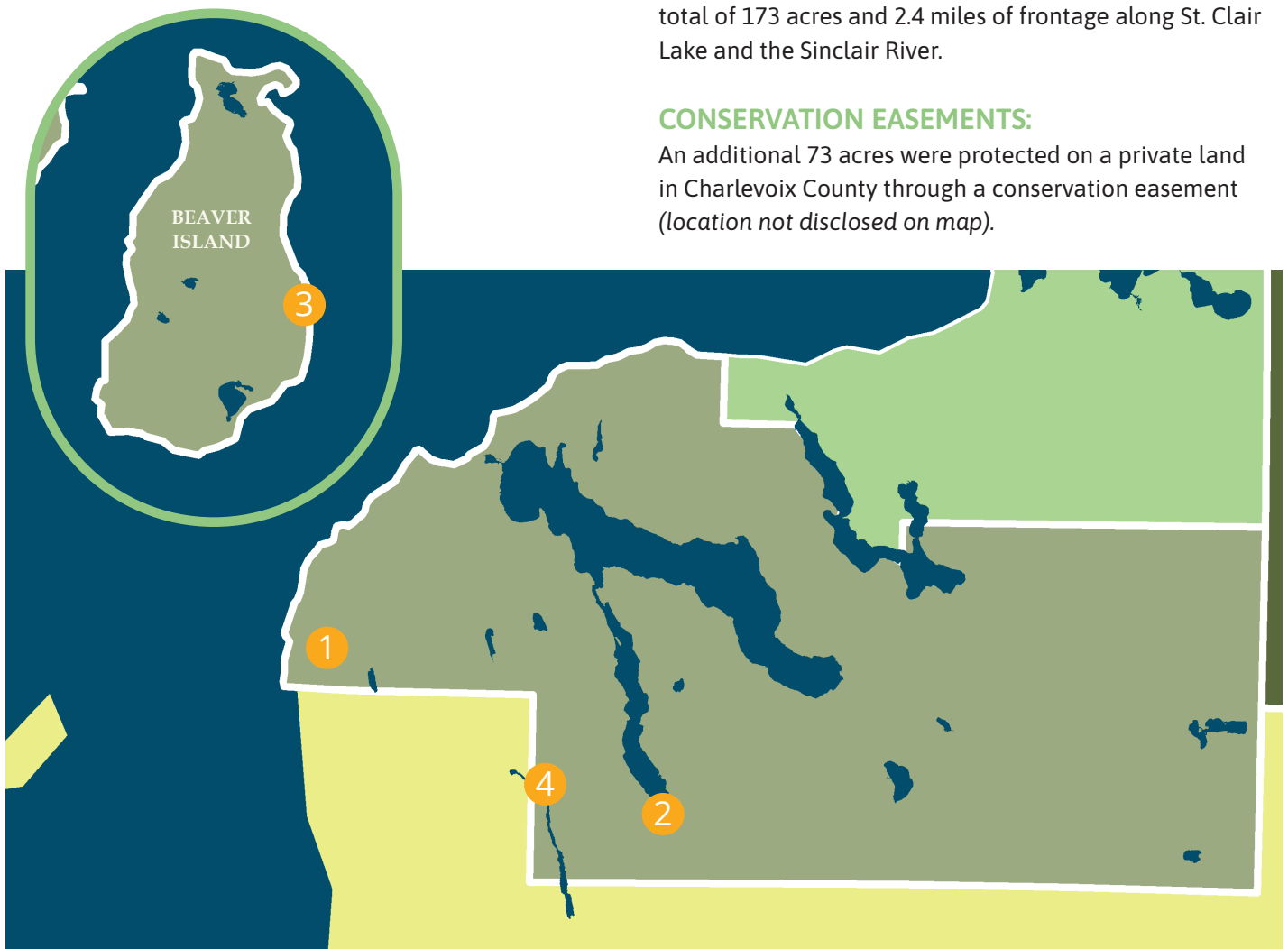
7 acres | Banks Township

415 feet on St. Clair Lake, 190 feet on 6 Mile Lake Road

The ninth addition to a natural area that now includes a total of 173 acres and 2.4 miles of frontage along St. Clair Lake and the Sinclair River.

CONSERVATION EASEMENTS:

An additional 73 acres were protected on a private land in Charlevoix County through a conservation easement (location not disclosed on map).





Sadie Bartosik (left) gathered with friends and family this summer to celebrate the new preserve.



26-acre addition to Conn's Cove Nature Preserve

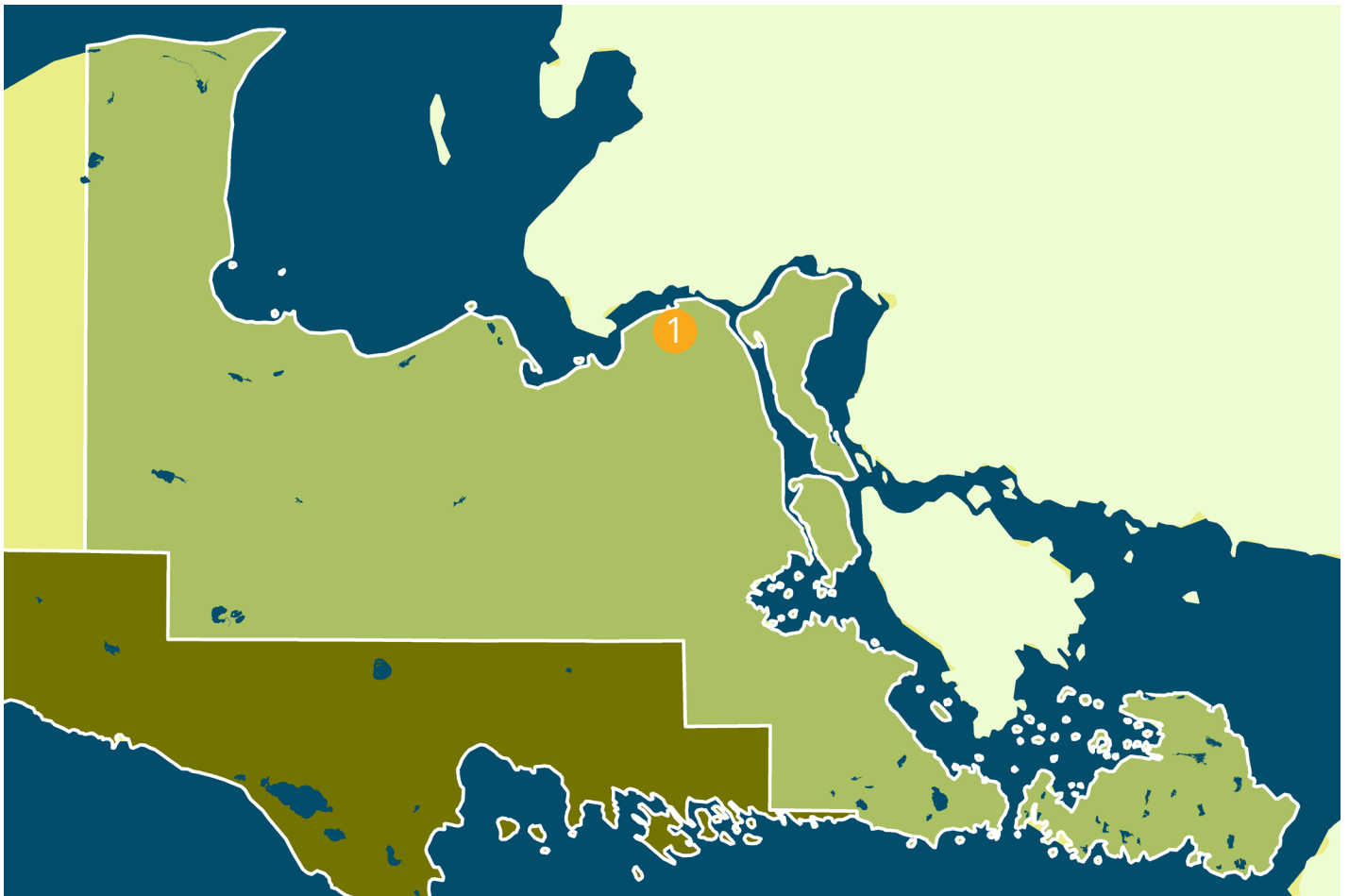
CHIPPEWA COUNTY LAND PROJECTS

1. SAULT STE. MARIE NAMING OPPORTUNITY

43 acres | Banks Township

This 43-acre parcel on the south end of Sault Ste. Marie was recently donated to Little Traverse Conservancy from RG Properties, Inc. to become a permanent nature preserve. A mixture of wetlands and uplands, the land has long been sought for protection by a local trail group that seeks to connect and improve the City trails to benefit hiking and outdoor opportunities around the City. You could name this preserve with a lead gift. Contact LTC if interested.

Photo: The Kevin and Pam Cooper Bridge was constructed through an Eagle Scout project by Haydn Jones and Scout Troop 105 in cooperation with OUTHouse Consortium and the City of Sault Ste. Marie. This bridge is part of a City trail that will connect to the new preserve.



CHEBOYGAN COUNTY LAND PROJECTS

1. MELVIN FAMILY HIKING AND BIKING TRAILS WORKING FOREST RESERVE

150 acres | Mullett Township
650 feet on Bennett Road

Mark and Michelle Melvin donated the funds to permanently protect this new reserve, in addition to kicking off an ongoing fundraising campaign for mountain biking and hiking trails here. The dramatic elevation on the property provides views of both Mullett and Burt lakes.

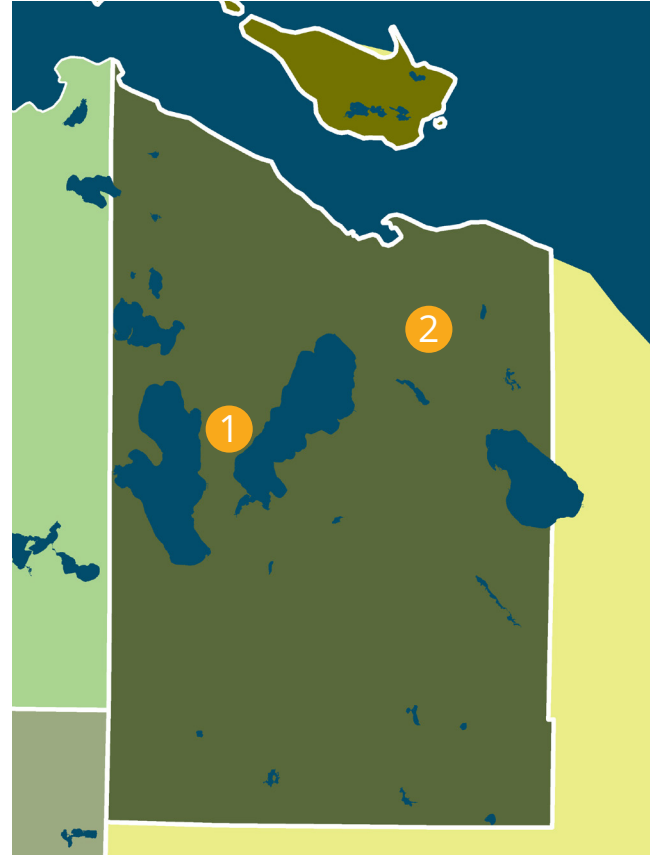
2. ADDITION TO REED'S ALVERNO NATURE PRESERVE

195 acres | Benton Township
2,800 feet on Myers Creek, 1,955 feet on Kreft Road

Consisting largely of wetlands, this property surrounds the southern 40 acres of the Reed's Alverno Nature Preserve and brings the preserve size to 355 acres total.

CONSERVATION EASEMENTS:

An additional 94 acres were protected on private lands in Cheboygan County with conservation easements (*locations not disclosed on map*).



Melvin Family Hiking and Biking Trails (WFR)

MACKINAC COUNTY LAND PROJECTS

1. POUPARD BAY NAMING OPPORTUNITY

22 acres | Moran Township

980 feet on Lake Michigan, 250 feet on Gros Cap Road

Lying along the northern shore of Lake Michigan just off of US-2 west of the Mackinac Bridge, this gem of a preserve includes both wetland forest and interdunal wetlands that provide habitat for unique wildlife and plants. LTC is currently looking for a lead donor to name this property.

2. KATHY BRICKER NATURE LOVER PRESERVE

130 acres | Clark Township

2,600 feet on Duck Bay, 225 feet on Muscallonge Bay

This remote preserve on Marquette Island, Les Cheneaux, was purchased in honor of longtime conservationist Kathy Bricker who, in 1978, was LTC's first Executive Director. The preserve lies adjacent to the 1,683-acre Aldo Leopold Nature Preserve.

3. CORYELL ISLAND PRESERVE

8 acres | Clark Township

1,100 feet on Lake Huron

A beautiful contribution to the permanent protection of lands within the Les Cheneaux islands archipelago. Funding was given by an anonymous donor.

4. KERRI AND MARGO MERTAUGH ADDITION TO MERTAUGH FAMILY NATURE PRESERVE

77 acres | Clark Township

1,500 combined feet on Search Bay and Lake Huron

This almost entirely wooded preserve with cedar, fir, spruce, and hemlock was a bargain sale by Margo Mertaugh to honor her late sister and former LTC Trustee, Kerri Mertaugh.

5. ADDITION TO WILDERNESS BAY NATURE PRESERVE

9 acres | Clark Township

772 combined feet on Wilderness and Hessel Bays

Fundraising is ongoing for this spectacular preserve addition, we welcome your support!

6. ADDITION TO SHEPPARD-HARDY NATURE PRESERVE

.13 acres | Clark Township

125 feet on Lake Huron

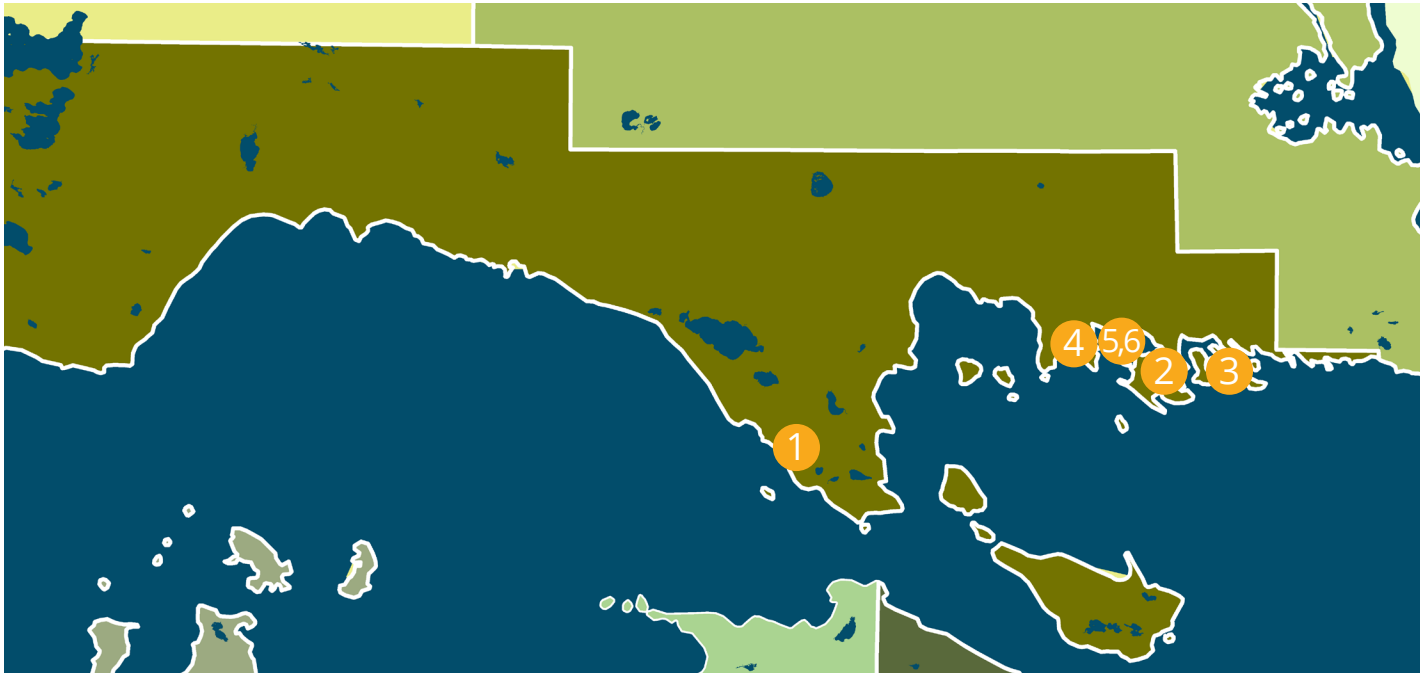
This small acreage and shoreline was purchased by the Les Cheneaux Foundation and then donated to LTC to add to the Sheppard-Hardy Nature Preserve on Marquette Island. The entire preserve now totals just under 43 acres with 2,745 feet of shoreline.


CONSERVATION EASEMENTS:

An additional 80 acres on a private land in Mackinac County were protected with a conservation easement (location not disclosed on map).



Jim Bricker (Kathy's husband) and Jeff Susor (Kathy's nephew) install the new preserve sign on Marquette Island.



The word "STEWARDSHIP" is written in a large, hand-drawn, black-outlined font. Each letter is adorned with green leafy branches extending from the top and sides. The background of the entire page is a photograph of a person with a backpack walking through a field of tall grass and wildflowers, with a forested hill in the background under a blue sky with clouds.

STEWARDSHIP

The stewardship department is responsible for the care and maintenance of every preserve and reserve acquired in 2022, along with every one acquired since 1972!

This year the stewardship department managed 242 preserve and reserve units (over 25,000 acres) and monitored all 318 conservation easements. Joining the six full-time staff were technicians and interns, as well as 255 volunteers.

Our volunteers and interns are extremely important to our success. Not only do they put in the combined time of a few full-time employees, they are dispersed around our five-county service area helping us have many eyes, hearts, minds, and hands on the lands.

Volunteers help us detect encroachments, trespasses, or vandalism, undesirable realities that we must deal with every year. At Vermilion Point where dogs are seasonally not allowed, an off-leash dog caused a Piping Plover casualty. At Seven Springs, several of our metal trail map signs were destroyed or stolen. At the Harris Reserve, a gate was stolen. While these are just a sample of such incidences, the encouraging thing is how we respond. We collaborated with local, state, and federal partners to design more thorough protections of the Plovers at Vermilion. And we quickly worked to replace the signs and gate with increased monitoring, showing that we will not let the vandals deter us from the care of these special places.

The stewardship department manages trails, parking areas, and signs to provide safe and inviting access to nature, furthering LTC's mission to foster appreciation of the environment. This means repairing degraded boardwalks, like we did at the Darnton Preserve, or ensuring more than 30 miles of trail are regularly mowed. Last year, almost 900 feet of boardwalk were added to the existing trail on the Taimi Hoag Natural Area. This property is owned by the Little Traverse Bay Bands tribe, and is part of LTC's Susan Creek Nature Preserve trail system.

Six new trails totaling 2.58 miles were established in 2022. These include new trails on Bois Blanc Island (Vosper Nature Preserve) and Drummond Island (Forslund Dix Point Nature Preserve) and at the Barbara C. Hoffius Nature Preserve in Cheboygan where a three-quarter mile trail off of the North Central State Trail was built.

This past year and going forward, we are focusing on new opportunities to make places more accessible to more people. At the Offield Family Viewlands Reserve, we partnered with volunteers from the Bluestem Meadow group to construct a 2,100-foot long trail with a compact aggregate surface that is easier to cross for people with mobility challenges. This trail leads gradually to a labyrinth which was specifically designed to accommodate a wheelchair.

Last year, the cabin at the Agnes S. Andreae Nature Preserve was reserved by 15 different groups. Staff and volunteers groomed or packed eight trails for winter

sports. To access the 116 preserves or reserves that are open to hunting, we received 588 individual hunter registrations in 2022. Trail camera counting data indicates that there were at least 86,000 visits to LTC lands in 2022.

Over 26 work bees took place to remove invasive species, dedicating 144 hours to the protection of native biodiversity. A total of 16,995 trees, shrubs and wildflowers were planted at five different properties. Two prescribed burns totaling 28 acres occurred in the spring of 2022. Lastly, 145 acres of working forest reserve land were sustainably logged to create habitat or improve forest stand health.

As we move forward to a new half century of work, we will be placing an emphasis on inventorying the lands that we own for ecological health. This information will enhance the lives of ALL of us who are coexisting in this beautiful place. Thank you for making this work possible.



ENVIRONMENTAL EDUCATION

Your membership builds trails and protects land. You can go outside each day and experience the power of your gift by visiting one of many nature preserves. One thing you may not readily see are the experiences you are creating just outside of our local schools. Here is an insider's glimpse at how your membership is supporting environmental education for children throughout northern Michigan.

Your education team at LTC has two primary ways of teaching outside: Forest School and school field trips.

FOREST SCHOOL: Forest School is a chance for local students to learn at a nature preserve within walking distance of their school. Schools partner with your LTC education team to build outdoor curriculum throughout the year at the local preserve. Refining the Forest School program continued to be our focus in 2022. We are deepening our relationships with the students and teachers at Alanson Public Schools, Lake Superior Academy, Three Lakes Academy, and Mackinaw City Public Schools. Program themes vary by grade and include plants, insects, reptiles and amphibians, birds, mammals, fish, and wilderness survival. 129 Forest School programs were held in 2022.



FIELD TRIPS: Any school in our five-county service area can call LTC to schedule a field trip with our team on a nature preserve near them. Thanks to your membership and the income from the Andreae-Brown Family Environmental Education Endowment, this is a free service to schools! 93 classes were able to get outside and learn on snowshoes, sleds, and sneakers in 2022.

Your membership also supports three outreach programs that help people learn outside: summer education programs, Discovery Boxes, and Friendship Center programs. Summer 2022 EE programs saw the return of our Knee-High Naturalist Program for ages 3-5 and the YES program (Youth Explorer Series) for ages 7-12 that focuses on skills and activities that can be done outdoors for a lifetime. We continue to loan a variety of themed Discovery Boxes and other education resources to educators throughout the year, a decades-old yet still relevant program here at LTC. Your education team has also partnered with the Emmet County Friendship Center for monthly senior outings held at different nature preserves in Emmet, Charlevoix, and Cheboygan counties. Activities have included snowshoeing, hiking, kayaking, birding and more. Efforts are underway to expand partnerships with Senior Centers across our service area.

Whether a student is seven or seventy, there is a way to get outside and learn with LTC!

i love coming to the Forest

I think it is the
best learning about
nature

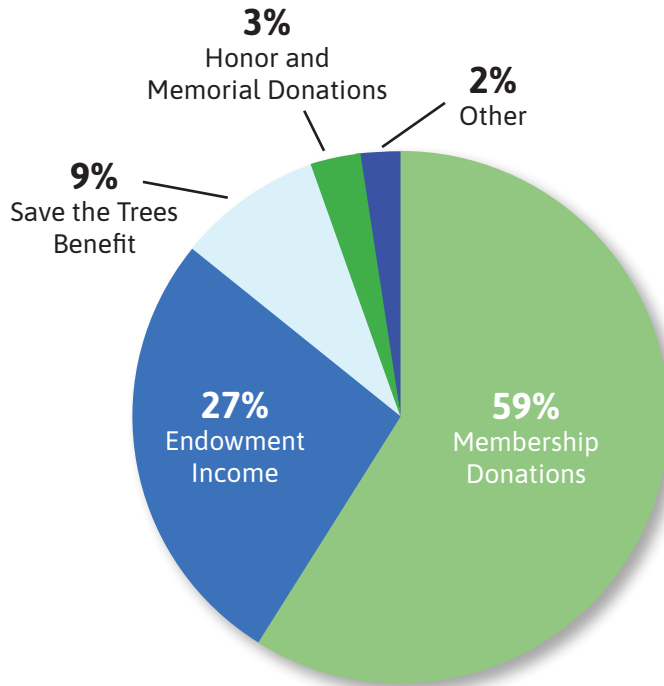


I feel good ^{from} _{tuck}

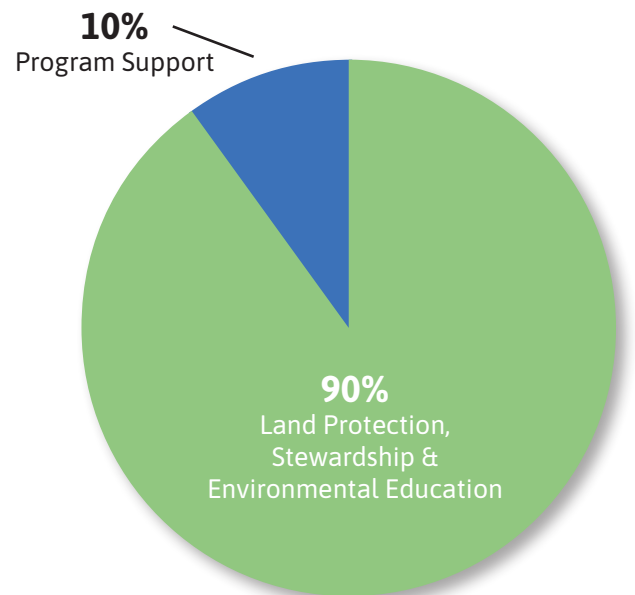
YOUR SUPPORT IN 2022

The Conservancy's 2022 financial audit is not yet complete. Our fully audited 2022 financial statement will be published at www.landtrust.org/publications this summer.

SOURCES OF FUNDS 2022



USES OF FUNDS 2022



EXPLANATION OF FUNDS

OPERATING FUND

Your annual membership is the largest single source of operating funds, which are the main support of LTC's daily work. LTC does not receive government support for operating. Memorial gifts, grants, Save the Trees Benefit, and endowment income provide additional support to make our mission thrive daily.

LAND ACQUISITION FUND

The Land Acquisition Fund is used to purchase or facilitate donations of nature preserves, working forest reserves, or conservation easement properties. It is funded by special gifts designated for this purpose.

ENDOWMENT FUND

Annually, up to 5% of the 36-month average fair market value (FMV) of the endowment is distributed to the Conservancy's operations. The FMV of our endowment at the end of 2022 was \$17,332,381 and provided \$712,709 of income. Within our endowment are funds that include:

- Andrae-Brown Family Environmental Education Fund
- Joan R. and Charles M. Taylor II Memorial Endowment Fund
- Les Cheneaux Endowment Fund
- Patricia and Thomas Jeffs Family Endowment Fund
- Vermilion Endowment Fund

MEMBERSHIP AMBASSADORS

The terrific people who volunteer their time to make our membership mailings personal and meaningful.

Bill and Maxine Aten
John Baker
Mark and Caprice Baun
Jim and Wendy Bean
Gretchen Bearce
Trip and Emily Beynon
Wayne Blomberg
Jacques Bourdeau
Mike Cameron
Micheal and Joanne Cromley
Al and Jane Damschroder
Mary Faculak
John and Celine Fox
Cathy Freebairn
Doug Fuller
Gregg and Debra Garver
Ray and Rita Gaynor
Jim Gillingham

Rusty and Liz Gowland
Cheryl Graham-Dryer
John and Jeri Griffin
G.P. Johnson Hightower
Richard and Patti Hodge
Pam Houk
Roxanne Alfsen and Richard Jenkins
Joe and Karen Kimmell
Liza and Jeff Leland
Marty Letts
Nancy Lindsay
Rik Lobenherz
Ric and Lisa Loyd
Liz Polk Lynch
Jeff and Tracy McMath
Anne T. Melvin
Ashley Moerke
Debbie Nachtrab

Marta Olson
Mark Paddock
Bill and Jane Petzold
Ben Robinson
Jay Rosen
Jim and Kathy Schroeder
Nancy A. Sheppard
Bill Stark
Christine Tucker
Steve and Jean Van Dam
Anne D. Wallace



2022 VOLUNTEERS

Chris and Jim Abbey	Jane Duffield and Paul Pioszak	Richard Jenkins	John and Mary Merrill
Pat Alguire	Michelle Duncan	Chuck Johnson	Kristi Merritt
Katie Allen	Jacqui Durand	Gregg and KC Kahsar	Charlotte Michels-Asbury
Richard Anderson	Dwan Family	Michaleen and Nick Karay	Deb Milligan
Don App	Mary Dye	Andy Keen	Al and Jean Moberly
Les Arnold	Jilanne and Scot Egleston	Clif Kennedy	Brad and Sue Moffatt
Elizabeth Asbury	Jane and Charles Elbert	Larry Kepner	Carol Moncrieff Rose and Paul Rose
JoAnn Astolfi	Mark Engelsman	Kelly Jo Kitchen	Rick Moore
Chris Baiardi	Doug Engler	Sue and Bill Klco	Diane Morand
John Baker	Alena Engstrom	Karen Klompars	Lisa Morris
Molly Baker Veling	Mary Erickson	Karen Knapp	Jeff Moyer
Sally Bales	John and Sue Esser	Greg Koontz	Rye Muir
Linda Baney	Jean and Clayton Faivor	Linda Kortesoja	David and Carol Murray
Mike Banyai	Bonnie and Charles Farrugia	Mike Kostal	Narcotics Anonymous
Michael Bartlett	Bob Fedor and Barbara Forslund	Shelley Koteskey	Amber, Stu, and Theo Neils
Jim and Wendy Bean	Dakota Finnerty	Sherry Kovach	Kathrine Neils
Barbara Bechhold	Miranda Fisher and Kevin Hammond	Bill and Mary Kunst	Ruth and Steven Nelle
Dan and Heather Beem	Theresa Flange	Jerri LaCount	Edward and Pam Newcomb
Carolyn Belknap	Lawrence Flynn	Jacque LaFreniere	Jessilynn and Helene Norcross
Kris Berg Bennett	Mary Flynn	Lake Louise Christian Community Campers	Chris Norton
Lucy and Barbara Bergin	Max Forbrig and his Scout Troop	Dale Landes	Thomas O'Halloran and Teresa Woodruff
Linnea Bernier	Chris Ford	Diane LaPointe	Bill Olstrom
Emma Biebuyck	Lynn Frazee	Mitchell Laporte	Gary Osterbeck
Sandy Bollinger	Doug Fuller	Darrell Lawson	John Ottimer
Bruce Booth	Bill Garlinghouse	Kathy Lawson	Mark Pachla
Sally and William Brown	Gregg Garver	John Lehman	Jeff Pagel
Dean and Rita Brubacher	Gary Gauthier	Beth and Ed Leuck	Jeannine Palms and Dale Petty
Erin Burns	Sherry and Brad Gerlach	David Lewis	Rick Pawley
Michael Buttigieg	Mark Gilbert	Jeanine Lifka	Todd Petersen
Ceci Cain and Laura Fernelius	Susanna Glass	Barb and Charles Lindsey	Tatem Phelps
Mary Campbell	Cori Gokee	Nicole and Nils Lindwall	Ed Pike
Patty Campbell	Roldan Grace and Family	Little Traverse Bay Bands of Odawa Indians Youth Conservation Corps	Phil Porter
Scott Carbeck	Brad and Pam Grassmick	Richard Lord	Cynthia Pryor
Dan and Linda CasaSanta	Jon Griffin	Lisa and Ric Loyd	Claire Rasmussen
Judi and Pete Chimner	Bob Haase	Jason Lund	Bill Reed
Mary Jane Clayton	Linda Hammond	Kai Malleis	Don Reef
Mary Clinton	Susan Hannah	Sheila Malleis	Dan and Jan Reelitz
Nancy and Dave Cluley	David Hannan	Marty and Pat Maloney	Linda Rehor
Susan Conklin	Karen and Gale Harkness	Dan Mann	Sue and Gary Rentrop
Bill Courtois	Anika, Will, Megan, and Robert Harris	C. T. Martin	Geoff and Jennifer Reynolds
George Covington	Jana Harper	Larry Marvin	Robert Reynolds
Beth Cowie	Judy Harvey	Diane and Glen Matthews	Gerry and Pat Rintamaki
Belynda Crandall	Dennis and Lori Heathfield	Dave and Muffie McCauley	Barbara Rivard
Joanne and Mike Cromley	Roger Heimbuch	Tim McClure	Kim and Tom Rowland
Steve Crusoe	Eric Hemenway	Renee McDuffee	Stan and Karen Royalty
Frank D'Andraia	Bill Henne	Linda McElroy	Robert Ruth
Scott Davis	Gary High	Harriet and Vaughn McGraw	Susan Rutledge
Scott Decius	Diane Hobbins-Meyer and Carl Meyer	Peri McGuinness	April Sanders
Keith and Nancy Demeuse	Bill Hodges	Charley McKinley	Dr. Tom Sarosi
Tim DeWick and Bonnie Mikkelsen	Bill Horntvedt	Sue McLain	Ellen Schloff
Karen and Mike Donnelly	Bruce and Jodie Janssen	Mike McNamara	Jim Schroeder
Gretchen Dorian		Patrick McQueen	Adam Schubel
Pat and Julie Dougherty			Robert Scroggins
Dan Dueweke			

Richard Seibert
 Andi Shafer
 Cheryl Shanahan
 Beth and Frank Shepherd
 Melanie Sims
 Julie and Emmett Sisson
 Greg Skau
 Zach Skiera
 Karie Slavik
 James Slough
 Scott Smith
 Carolyn Stark
 Karen Stewart
 Sue Stewart
 Jeffrey Stimson
 Peggy Swenor
 JoAnne Thomas
 Sandra Thompson
 Eileen Thorp
 Ben Thoune
 Eric Thuma
 Mike Tiedeck
 Jenny Tompkins

Alice Traylor
 Mary Trout
 Mary Jane Ulrich-Perrone
 Jean Van Dam
 MaryAgnes and Paul Van Klaveren
 Michele VanderVelde
 Meghann Varum
 Susan and John Vron dran
 Larry and Sally Wagle
 Ellen Waller
 Robert Washburn
 Dan and Kathy Wassman
 Barb Waybrant
 Areya, Kenneth, and Nolan Wells
 Phillip Wesorick
 Sharon Whitehead-van Loben Sels
 Jennifer Wilk and students of Great
 Lakes Yoga, Ann Arbor
 Beth Wilson
 Jackie Wilson
 Ron Winchester
 Jennifer and Todd Winnell
 Carol and James Woodruff

Todd Wright
 Glen Young
 Paul Zardus





We would like to thank the following community of individuals, families, businesses, and foundations who made gifts in support of LTC's mission. Gifts were received between January 1, 2022 and December 31, 2022. We do our best to maintain an accurate up-to-date list of donors and apologize for any errors or omissions. Please call our office at 231.347.0991 with any corrections.

ANDRAE-BROWN FAMILY ENVIRONMENTAL EDUCATION ENDOWMENT FUND

*Gifts to this fund directly support
our environmental education
programs.*

Anonymous
Mrs. Joey Arbaugh
Sally and Ian Bund
Estate of Bettie Case Fenton
Jerry and Eileen Phaner
Alex A. Green
Estate of Mr. Fred Koehler
Estate of Don LeClair
Mark and Michelle Melvin
The Family of Dave and Cary
Ormond
Estate of Mr. Robert B. Smith

UNRESTRICTED ENDOWMENT FUND

*This Fund is currently unnamed.
It is the second largest source of
income to support our mission.
Membership is the first.*

Anonymous
Jerry and Eileen Phaner
Estate of Mrs. Timothy R. Ives
Earl Larson
Mark and Michelle Melvin
Donald and Janeen Smith

PATRICIA AND THOMAS JEFFS FAMILY FUND

*Established in 2022 by Tom and
Pat Jeffs*

STEWARDSHIP ENDOWMENT FUND

The Family of Dave and Cary
Ormond

VERMILION ENDOWMENT FUND

Wild Shore Foundation

GRANTORS

Gifts of \$3,000 or more

Anonymous
Mrs. Jennifer Adderley
Joseph and Elna Albano
Americana Foundation
Richard A. and Marcia B. Ames
Fred and Christine Andreae
Mrs. Joey Arbaugh
Chris and Cindy Baiardi
Baiardi Family Foundation, Inc.
Mr. and Mrs. Mark A. Baun
David H. and Dana P. Bearce
Larry and Linda Bernhardt
Mr. and Mrs. Stuart Bishop
Ms. Suzanne B. Blakeman
Jim and Kathy Bricker
Mr. and Mrs. H. Hewett Brown
Andrew and Nancy Buchanan
Sally and Ian Bund
Thomas and Cynthia Burr
Michael and Brenda Byers
Mr. Michael T. Cameron
Mrs. Raymond L. Campbell, Jr.
Carls Foundation
Frank and Eva Carswell
Daniel and Linda CasaSanta
Charlevoix County Community
Foundation
Susan Chatlos-Susor
Cherry Republic
Daniel and Laurel Clarke
Jim and Pat Clarke
Mr. and Mrs. Robert W. Clarke
George and Alexandra Covington
Mr. and Mrs. Joseph O.
Cunningham, Jr.
Peter Gamble Curran
Samantha Danielian and Patrick
Guyon

John and Mary Deane
Decka Digital, LLC
Mr. and Mrs. David J. Donovan
Dula-Kobusch Charitable Trust
Mr. and Mrs. Reed H. Eberly
Elhapa Foundation
Ross and Emily Emmerman
Sheila Navarre Enos Charitable
Foundation Trust
Gayle and Chip Everest
Ron and Lisa Fenech
Jerry and Eileen Phaner
First Community Bank
Lt Col Daniel French, USAFR (Ret)
and Margaret French
Frey Foundation
Ms. Delia V. Fritz
Woody Gardner
James Garland and Carol Andreae
Ted and Nancy Haddad
Mr. and Mrs. Norman W. Harris, III
Mr. and Mrs. Gordon Hassing
John J. Helstrom Memorial Fund
Herrick Foundation
The Highlands
Mr. and Mrs. Richard J. Hirrel
Kathleen Gamble Hirrel
The Holton Family
Mrs. George W. Houk
Jack and Tay Howell
James and Laura Hunt
Mr. William O. Hunt, Jr.
Helen J. and Allen I. Hunting
Foundation
Mrs. Ann K. Irish
Mrs. Timothy R. Ives
Mr. and Mrs. Laban Jackson
Amie and Tony James
Mr. and Mrs. Thomas H. Jeffs, II
Nadra Johnson
Sylvia S. Johnson
Amy and George Joseph
Fred and Edie Kaufmann
Sarah and Dan Kay
James and Elizabeth Kenan

Dr. Donald Klein
Dr. and Mrs. Victor L. Knowlton
Mr. and Mrs. Richard Kobusch, Jr.
John and Barbara Kowalczyk
Dave Kring Chevrolet Cadillac
Mr. Walter Kummer
Mark and Denise Lammert
Land Trust Alliance
Earl Larson
Estate of Don LeClair
Les Cheneaux Foundation
Ted and Kay Lunt
Fred and Barbara Malpass
Mr. and Mrs. Webb Martin
Sally and Bill Martin
Martin Family Foundation
Annette Maxson
Lisa Marie and John Maxson
Mr. and Mrs. John B. McCoy
Drs. Vaughn and Harriet McGraw
Kirk McKinney and Eliece Aiman
Mr. and Mrs. H. R. McPhee, III
Hank and Liesel Meijer
Dan Sullivan and Anne T. Melvin
Mark and Michelle Melvin
Mrs. Ann R. Meredith
The Michalik Family
Michigan Department of Natural
Resources
Al and Jean Moberly
Nancy Monroe
Mr. and Mrs. Richard W. Nash
Nicholas S. and Susan B. Noyes
Mrs. Sue and Mr. Evan Noyes
Nub's Nob Ski Area
Mr. and Mrs. Calen Offield
Chase and Jena Offield
Mr. and Mrs. James S. Offield
Kelsey Lee Offield and Cole
Sternberg
Offield Family Foundation
The Oleson Foundation
Mr. and Mrs. Stephen Ormond and
Family

Ms. Audrey Wallace Otto
Paradise Lake Association
Preston S. and Barbara J. Parish
Foundation
Mrs. Carol and Mr. David Parker
Mark and Sarah Parker
Mr. David P. Parker
Dr. and Mrs. Albert F. Polk, Jr.
Peco Foundation
Mr. and Mrs. Thomas C. Peterson
Petoskey-Harbor Springs Area
Community Foundation
Mr. and Mrs. William A. Petzold
Pickerel-Crooked Lakes Association
Mr. and Mrs. Seth L. Pierrepont
Suzi and Clif Porter
Kevin Proctor
Mori and Cedric A. "Rick" Richner III
Randel Richner and Eric Russell
Bill Roney and Joanne Kelley
Jim and Michelle Russell
Rogan and Dunne Saal
Lewis Sage and Katherine P.
Sheppard
Mr. and Mrs. Harry Santen
Dr. William C. Scharf
Mr. and Mrs. Charles M. Schiavone
Lisa and Peter Schiff
The Schiff Foundation
Ham and Barb Schirmer
Schoenleber Foundation, Inc.
Mr. and Mrs. Robert H. Schultz
Mrs. Virginia Sheldon
Dr. Christine D. Sheppard
Mr. and Mrs. Peter Simons
Daryl and Ella Smith
Mr. Robert B. Smith
Mr. and Mrs. William J. Soter
Mr. Scott Souder
Mrs. Susanna J. Souder
Mr. and Mrs. W. James Sprow
St. John's Episcopal Church
Community Fund
Ray and Ann Stanhope
Donald and Karen Stearns
Katherine Strojny
Raymond and Kathleen Susor
Walter Susor
Mr. and Mrs. Christopher Taggart
Mr. and Mrs. Alex Taylor
Dick Taylor
Charles M. and Joan R. Taylor
Foundation
Place Tegland
Joseph and Barbara Traub
Traverse Foundation
Jim and Barb Van Dam
Jean and Steve Van Dam
Kevin Vranes and Julie Sparrow
Carson

Ms. Anne Wallace
Henry E. and Consuelo S. Wenger
Foundation
Haley Werden
Bill Werner
Mr. and Mrs. Joseph L. Werner, II
Wild Shore Foundation
Thomas J. Williams III
Mr. and Mrs. Charles L. Wilson, III
William and Amy Wolff
Dr. and Mrs. John A. Woollam
Carolyn Workman and Kurt Wacker
David and Jean Yost

BENEFACTORS

Gifts of \$1,000 to \$2,999

Anonymous
Michael and Kathleen Ableson
Doug and Anne Albrecht
Drs. Patrick and Barb Mathes
Alguire
Mr. and Mrs. Jack Anderson
Ms. Rose Ann Anderson
Mr. and Mrs. J. Hord Armstrong, III
Peter and Anne Askew
Mr. and Mrs. P.J. Astolfi
Ms. Nancy Ayres
Ronald C. and Sandra Baldwin
David and Paula Bardsley
Dr. Cheryl Barget
David and Robyn Barrie
Michael and Christine Bartlett
Ms. Shirley Barton
Mrs. Ann R. Baruch
Scott and Amy Basel
Mr. and Mrs. John G. Beam, Jr.
Robert Beasecker and Erika King
Belle Aquatic
Mr. and Mrs. Morton Payne, III
Emily and Trip Beynon
Mrs. Irvin G. Bieser, Jr.
Dr. and Mrs. William W. Blackburn
Paul and Lisa Blanchard
Mr. George Peter Block, Jr.
Thomas and Carmel Borders
Charles and Linda Borgsdorf
Martha and Andrew Bowman
Peter and Terry Gamble Boyer
Kalyn K. Brandewie
John and Katherine Brodie
Kevin Brown
Mr. Willis E. Brown
Mr. and Mrs. Jacob Bunn, IV
Timothy and Kerri Burg
Burt Lake Preservation Association
Kevin and Heather Byer
Mary Campbell and John Larch
Rob and Janet Carr

Dr. Phil Carrott, Jr.
Jack and Donna Carruthers
Mrs. Thomas H. Carruthers, IV
Tom and Katie Carruthers
Ceres Foundation
Steve and Teri Chaffee
Ms. Deborah Chapman
Ruth Chen and Kent Syverud
Mrs. John T. Cheney
Citizens National Bank, Cheboygan
Clannad Foundation
Matthew and Laurie Clarke
Robert and Brynne Coletti
Tim and Susan Collins
The Jeffrey Company
David and Cheryl Cooper
Anne and Aaron Copeland
Bill and Marilyn Crawford
Joseph Custer and Bonnie Kulp
Mr. and Mrs. Raymo Dallavecchia, Jr.
Frank and Dana D'Andraia
Mr. and Mrs. Samuel DeCamp
Rosemary DeCamp
Edmund and Julia Denapoli
Nancy Dennis
Mr. and Mrs. Andrew DeWitt
Mr. and Mrs. William O. DeWitt, Jr.
Mr. Bryan Diller
Patricia Dishman
Mr. and Mrs. James K. Dobbs, III
Druscilla S. Doehrman
John and Mary Ann Dolansky
Ms. Jo Anne Doll
Driggers Foundation
Mr. and Mrs. Fritz Duda
Gwen and Dale Dunlap
Mrs. John C. Erickson
Mark and Margaret Eustis
Evening Star Joinery
Emily Everest
Christy and Jim Everest
Mr. and Mrs. James C. Fabiano
David and Susan Feber
Ms. Diane Feldman
Paul and Lori Fenton
Mr. Corwin Fergus
Ms. Sylvia Fergus
Ms. Sylvia Fergus
Mr. Philip L. Ficks
Mr. Philip Ficks
Ficks Family Foundation
LeRoy and Barb Finch
Mr. and Mrs. John F. Finn
Fischer Insurance
Elise Fisher
Mr. and Mrs. Michael J. FitzSimons
Michael Fleming and Elise
Billingsley
Chris Ford and Ali Hill

Mr. and Mrs. Jeffrey S. Ford
Barbara Forslund and Robert Fedor
Nancy and Jim Foster
Cathey and Doug Fraser
Ms. Lynn Frazee
Patrick and Amy Frenzel
Mrs. Edward J. Frey, Jr.
Tripp and Lucy Frey
Harold and Lynda Friedman
Paul and Olga Friedman
Gerald A. and Sharon Gadowski
Mr. and Mrs. Gardiner W. Garrard, Jr.
Wick and Gardiner Garrard
Peter W Garrett
Tom and Edna Gattle
James Gehrke
Arnold Geldermans
John and Christine Giampetroni
The Gillette Foundation
Kate and Marin Gjaja
Ms. Kathleen S. Glass
Paul and Anne Glendon
Terry and Laurie Glissman
Bonnie and Beeb Graham
Thomas Graham
Nicki Griffith
Ms. Nancy Hoppe-Groudin and Roy
Perlove
Mrs. Beverly Haas
Frank and Connie Hagelshaw
Dr. Ada M. Hall
Robert and Pat Hemingway Hall
Paul and Lee Harkaway
Carl and Marjorie Harmon
Robert Harold and Nannie Turrell
Ed and Elaine Harris
Sarah Hart
Mr. Stewart Hayes
Thomas Hegewald
Mr. Glenn Hendrix
Bruce and Susan Herard
Alan and Karen Herbert
Mr. and Mrs. Robert Hermann, Jr.
HGC Roofing and Remodeling
Platt and Barbara Hill
Samuel and Pamela Himmelrich
Debbie Hindle and Ken Ross
Rebecca Hoch
Rick and Lotsie Holton
Mr. and Mrs. Robert H. Holton
Mrs. Stephen A. Horn
Walter and Christine Howell
Wendy J. Hoyt
Mrs. Walter G. Huber
Diana and Jim Huckle
Mr. and Mrs. W. Anthony Huffman
Verne G. & Judith A. Istock
Foundation
Verne and Judy Istock

Mr. and Mrs. Hugh M. Jacob
Hollye and Jeff Jacobs
Loren D. Jahn
Martin and Patricia Jahn
Foundation
Marcee and Grant James
Mr. and Mrs. John C. Jansing, Jr.
Mrs. John C. Jansing
Jasam Foundation
Christopher and Lauren Jeffries
Emerson Jones
Michael Kamrin and Katherine See
Mrs. John W. Kausch
Kevin and Fay Keane
Robert and Mary Keedy
James and Elizabeth Kenan
Mr. and Mrs. Robert Kendrick
Mr. and Mrs. Joseph W. Kimmell, II
Stephen and Molly Kircher
Tom and Betsy Klein
Klepadlo, Winnell, Nuorala, P.C.
Ms. Karen L. Klomparens
Chuck and Christy Kneese
Fredrick and Lisa Koetting
Mr. and Mrs. Martin A. Krall
Ms. Kathy Kurtz
Sandra T. Laas
Mrs. Polk Laffoon and Family
Mr. William Laitner
Mr. and Mrs. Mason H. Lampton
Rich and Kitty Lange
L'Arbre Croche Fund
Mary Ann and Allen Lassiter
Rudi and Hattie Laveran
Janet and Robert Lee
Jeff and Sally Leinicke
Josh Lesnik
Chip and Kathleen Letts
Martin Letts
Lilly Christy Busch Hermann
Foundation
Gow Litzenburger
Mr. and Mrs. Neil Loney
Josette Lory and John McLeod
Ms. Cammy M. Lowe
Ms. Karen Luther
Mrs. Carrie Lyons
Robert and Karen Mackey
Joseph and Courtney Maglichetti
Paul and Barb Malloure
Mr. Tad M. Malpass
Edward and Janet Mardigian and
Family
Josephine Marquis
Mr. and Mrs. James R. Marriott
Jack and Joanne Martin
Darlene and Dudley Marvin
Sydney Maxson
Mr. and Mrs. William T.
McCormick, Jr.

Michael and Ann McDonald
Nancy and Martin McEnroe
Dr. Robert J McEnroe
John and Mary Lou McIlwraith
Ms. Mary K. McIntire
Mr. and Mrs. Charlie McLravy
Jim and Diane McMahon
Ray and Audrey McMullen
Patrick and Carolyn McNamara
Barbara Merrell and Richard
Waters, Jr.
Chad and Paige Meuse
Emerson and Juliet Meyer
Donald W. Milock
Diane Morand
David and Nancy Munson
Ken Musselman
Kenneth and Mandy Neihsl
David and Suzu Neithercut
Mr. and Mrs. Mark E. Neithercut
Chris and Linda Nelson
Mr. and Mrs. Brian D. Newton
Mr. and Mrs. Stephen Nolan
Thomas and Ellen Noneman
John and Lani Ochs
Susan Offield
Cameron Reycraft O'Keefe
Paul and Susan Opfermann
Paul and Christine Oster
Connie Osters
Ms. Audie Otto
The Jay L. Owen, Jr. Family
Christine and Phillip Parker
Michael and Noreen Parker
Prabhakar and Stephanie Patil
Jill and Dave Patterson
Martha and Mark Patterson
Scott and Jennifer Pattullo
John D. and Susan K. Paul
Charles and Christa Pearce
Rachael and Will Peek
Mr. Matthew Petcoff
Charlie and Lacey Petersen
James and Cathryn Peterson
Petoskey Plastics
Rick and Penney Phillips
Mr. Gail F. Piltz
Mrs. Margaret Pittman
Thomas and Sarah Post
Mark and Patti Prendeville
Mr. and Mrs. John B. Quay
Linda Rakolta and Joel Raven
Ms. Heide Ralli
Craig and Mary Rapin
Thomas and Patia Rarick
Ms. Martha S. Ratliff
Glenn and Barbara Reed
Fred and Kristan Rice, III
The Rieser Family Foundation

Amy and Jeff Risinger
Cordelia Robinson
Hugh C. Robinson
Mrs. David H. Roche
Tom and Lucy Rockwood
Nancy and Steve Rogers
Carol Ann and Warren Rose
Martha Brownscombe and Jay
Rosen
Mr. and Mrs. G. Alexander Ross
Thomas and Kimberly Rowland
Emily Ruddell
Joseph and Marie Ruicci
Lee and Cheryl Sachnoff
Raymond and Sharon Schaaf
Teddy and Molly Schiff
Peter and Lisa Schiff
Serge Schillio
Brenda Schloff
Mrs. Jeanette E. Schouweiler
Helen and Peter Schulze
Mrs. Bill Schwarz
Kevin and Jean Scroggin
Mr. Charles F. Shalkhauser
Deborah Shaw and Steve
Marquardt
John B. Shely
Jamie and Will Shier and Family
John Shreves
Mr. Gary L. Sieb
Louis and Nellie Sieg Fund
Skip and Anne Simms
Roger Skrobeck
Mr. and Mrs. Hugh Sloan, Jr.
Donald and Janeen Smith
Mrs. Joan F. Smith
Mr. Robert Smith, III
Bob Solt and Anne Couture
Mildred and John Spalding
John and Judy Spoelhof Foundation
St. Marys Cement Company
Fred Stanske and Cindy Newton
Bill and Carolyn Stark
Mr. Edward Stenger, Jr.
Stephanie and Austin Stephens
Susan and Gary Stewart
Mrs. Margot Stoeher
Margaret and Bill Stude
Summers Foundation
Jeff Susor and Erin Nealon
The Sutter Family
Ms. Nancy Swift
Coastal Crawl Swim Club
Mrs. John H. Tanton
Florence H. Testa
Bruce and Karen Thompson
David Thompson
Drs. David and Margaret Thompson
Robert and Sharon Toms

Mr. Steve Toth, Jr.
Triford Foundation
Rick and Michele Tromble
Mr. Robert S. Troth
Don and Mary Trout
Dr. and Mrs. D. Mark Upham
Mr. Marc V. Vadnaiss
Ms. Janet Vallee
Van Dam Custom Boats
Mr. Richard B. Vance, II
Mr. and Mrs. Michael VanLokeren
Mr. and Mrs. Julian P. Van Winkle, III
Ms. Grace Wakulchik
Mrs. Jack Waldron
Mr. John Mumford Walker
Lauren Walsh and Steve Radecki
Mr. Andy Walz
Brad and Terri Warnecke
Warner Family
Clay and Mary Jo Warner
Douglas A. Warner, III
Patsy Warner
Kristen and Michael Watson
Mrs. Gerald D. Weimer
Donald and Jan Weir
Amy Wendell
Mrs. Marian Wendell
Wentworth Builders, Inc
Mr. and Mrs. Joseph L. Werner, II
Samuel Westerman Foundation
Hugh Westwater and Linda
Larrimer
Wheeler Motors, Inc.
Ms. Suzanne Wingate
Ms. Janice Wittich
Matthew Woehrmann and Jill
Stanley
Mr. and Mrs. Nelson Woodruff

FRIENDS

Gifts of \$500 to \$999

Anonymous
Chris Abood
Mary M Abood
Mr. and Mrs. Jeffrey J. Abrash
Tom and Jodi Adams
Dr. and Mrs. Thomas A. Allan
Cynthia Allen
Lisa West Alpert and Mark Alpert
Matthew and Sarah Alshouse
Darrell and Marty Amlin
Steve and Mary Anderson
Dan and Mary Pat Armistead
Hassan and Karen Azar
Jill and Jeff Bacigalupi
Caroline Sharfman Bacon
Linda Badalucco
John and Sandy Baker
Terry and Lyndi Balven

Lele and Henry Barkhausen
Howard and Susan Barlow
Rob and Ann Bassett
Bear Cove Marina
Mrs. Winfield H. Bearce
Owen and Tracy Beckley
Mr. and Mrs. Walter W. Becky, II
Len Beil and Stella Ley
Bell Title Agency of Petoskey/
Harbor Springs
Ms. Donna R. Bender
Paul and Molly Bengelink
Lee Berry and Susanne Kocsis
Streeter Berry
Andy and Mary Bielaczyc
George and Bev Biltz
Mr. and Mrs. Richard P. Binder, Jr.
Thomas and Kathryn McConnell
Biziorek
Mr. Robert Bjornseth
Ms. Kitty Bollinger
Mr. and Mrs. Richard M. Bolton
Janet and Tim Borden
Glen and Betsy Borre
Mr. William F. Bradford
Peter and Jill Bridges
Whitney and Lee Brown
Brown Motors
Mike and Bonnie Brunett

Bettine Brusca and Edwin Landon
Thomas and Joyce Buerge
Mr. and Mrs. Thomas C. Buhl
Alexandra, Nicklaus and Victoria
Bund
Barbara and David Buzzelli
Patrick and Beth Camilleri
Anne and Mark Campbell
Howard and Jeannie Canada
Elizabeth Carlin
William Cattin
Evans and Valerie Cayce
Mr. James P. Chambers
Cheboygan Brewing Company
William and Jennifer Chope
Charles and Mary Beth Clark
Michael and Mary Jane Clayton
Mrs. Mary Clinton
Cockfield Family
Gordon and Kathryn Coleman
Luke Rodehorst and Lillian Connett
Hillary and Fairfax Cooper
Susan R. Corbin
The Cottage Company of Harbor
Springs
Mr. and Mrs. C. Howard Crane, II
Leslie and John Culbertson
Mr. and Mrs. J. David Cummings
Samuel and Janene Cummings

Mrs. Betty Cupp
Dave and Patti Dahl
Dr. and Mrs. Allen Damschroder
Mr. and Mrs. James J. Daniels
Mrs. A. Council Darling, III
Sue and Al Darold
Matt and Kathleen Davis
Mr. and Mrs. Douglas Dean
Peg Demmer
Mr. and Mrs. David R. Derian
Tim DeWick and Bonnie Mikkelsen
Robert B. Dick, PhD
Dan and Lynn Dimond
Deborah and John Dohan
Michael and Karen Donnelly
Bert and Tina Donovan
Douglas Lake Improvement Assn.
Jim and Chase Dreyfous
Mr. and Mrs. Richard P. Eide, Jr.
Jim and Bonnie Ellis
Judy Engelberg
Janet Englund and Ridgeway Scott
Walter and Jane Enterline
Mike and Marcy Etienne
Robbie and Lindsay Everest
Ms. Mary H. Faculak
Mr. Andrew E. Farley
Douglas Felt
Jack and Claire Findlay

Dr. David and Heidi Finley
Patrick and Kelly Finn
Emilia Fisher and John Riordan
Lauren and Greg Fisher
Mrs. Walter W. Fisher
Chris Fitzgerald and Elizabeth
Asbury
Mr. and Mrs. Colin FitzSimons
Mr. David K. FitzSimons
Mr. and Mrs. William FitzSimons
James and Joanne Foley
Alison B. Ford
John and Sarah Ford
Paul and Claire Forney
Brooke and Tate Fox
Mrs. Charles Fox
Mr. Robert R. Frederick
Ms. Catherine T. Freebairn
Douglas and Mary Fry
Courtney and Alexander Gardiner
Mr. Herbert Gedge
Grant and Lauren Gilbert
Dr. and Mrs. Alan R. Gillespie
Daniel and Margot Good
Virginia Goodrich
Gorter Family Foundation
Liz and Rusty Gowland
Brian and Gretchen Grad
Dean and Cheryl Dryer



Patti and Bally Grannis	Ms. Cathy Kalahar, Mr. James Tost, and Ms. Jennifer Tost	William and Kimberly Morris	Mr. and Mrs. Douglas S. Robinson
Mr. James Graves		Mr. and Mrs. Robert E. Mossburg	Drs. Edward and Patricia Robinson
Alex A. Green	Steven and Patty Kalbfleisch	Cara Mulder and Webb Friedly	William and Martha Robinson
Mr. and Mrs. Robert W. Greene, III	The Kasamis Family	Daniel and Julie Murphy	John and Kandy Ronayne
Thom Greene and Nadeen Kieren	Steven and Bonnie Katz	Matthew and Anneke Myers	Paul and Carol Rose
Dr. and Mrs. Emory Griffin	Marilyn and Jim Keller	Mr. and Mrs. Scott A. Myers	Mr. and Mrs. James M. Rudolph
John and Debra Griswold	Brooks and Peter Kennedy	Ellie and Matt Nader	Mrs. William G. Rupp
Richard and Donna Gross	Ms. Donna Kieselbach	Jean and David Nassif	Mark Russell
Dr. and Mrs. Gerrit B. Gucky	Susan Kindel, MD and Scott Nelson	Steve and Ruth Nelle	Mr. and Mrs. John B. Ryan
Gundrum Family	Kenneth and Susan Kirchner	Bill Nichols	Luis and Beth Saldivia
Patrick and Kathleen Haas	Paul and Nancy Knapp	Barbara Nixon and George Elias	Karen Samis
Kevin and Jennifer Haf	Mr. Fred Koehler	Julie Norcross	Sally Santen
Paul W. Hagan	Mike and Nancy Kota	Tom North	Dr. and Mrs. Thomas Sarosi
Mr. Daniel B. Hales	Lakeside Construction & Maintenance Inc.	Mrs. Barbara N. O'Hara	David and Janet Scarrow
Jeff Hall		Ms. Sally A. Olds	Ms. Susan E. Scarrow
Jeff and Cindy Hall	John and Carol Land	Mr. Howard O'Leary, Jr. and Andrea Hatfield	Curtis and Carol Jean Schaberg
Mrs. Thomas J. Hall	David and Bette Lauer	Cole and Alexandra Ollinger	David and Chris Scharrer
Mr. Christopher L. Hanley	Betsy and Hal Lawrence	Marta and Peter Olson	Pamela K Schooley
Mr. and Mrs. Thomas Hanna	Jim and K.C. Leh	Ms. Elizabeth Otto	James and Kathy Schroeder
Harbor Wear	Mr. and Mrs. Richard J. Lehmann	Mr. Mark Paddock	Oliver and Ana Schwab, Jr.
Phillip T. and Melissa Harrison	Mr. and Mrs. James P. Lenfestey	Steven P and Anthy Paddock	Jill and Scott Sellers
Mary Hayes	Susan Leonard	Jeannine Palms and Dale Petty	Stuart and Holly Seltman
Dennis and Lori Heathfield	John and Cleo Leppien	Barbara Papazian	Maureen and Dan Shaheen
Emily Heinlein	John and Linda Linnenberg	Mr. and Mrs. Richard M. Parker	Dr. Samuel and Holly Shaheen
Mr. and Mrs. David Hempstead	Mr. Robert Linnenberg	Ms. Susan H. Parker	Cynthia Shaw
Dr. and Mrs. Dale M. Herder	Emily Longworth	Dave and Linda Parlin	Gary and Colleen Shaw
Jeff and Shellie Herman	Ric and Lisa Loyd	Ms. Laura L. Parrish	Jeffrey and Frances Shepard
Mr. and Mrs. Dennis R. Herrick	Christine and Wally Lynch	Daniel and Patricia Passman	Dr. and Mrs. James M. Shirilla
Ms. Margo M Hields	Jon and Christy Lyons	Sheri Pawlik	Andrew and Andrea Siudara
Richard and Suzanne Hildner	Sarah MacKenzie	Meredith and Peter Perkins	Constantinos and Robin Skiadas
Melinda Hill and Tim Schulte	Mr. and Mrs. John MacLeod	Paul and Linnea Perlman	Sleepy Hollow Lane Association
Brian and Kristen Hirrel	Mike and Patty Maher	Mr. Roy Perlove	Scott and Dibby Smith
Dirk and June Hoffius	Mike and Suzanne Malenfant	Charlene and John Peterman	Mr. and Mrs. Thomas Snyder
John and Barbara Hoffman	Dr. and Mrs. Patrick Maloney	Michael and Cindy Pettibone	Dr. and Mrs. Joseph and Patricia Sobota
Mr. and Mrs. Jerome Hoganson	Melanie Manary and Charles Huebner	Tricia, Ted, Samantha, and Heidi Petzold Paisley	Emerson Solms
John and Julie Fasone Holder	Dr. and Mrs. Michael L. Manchester	Mr. Thomas W. Pfeiffelmann	Mr. and Mrs. William F. Souder
Mr. and Mrs. William B. Holmes	Craig and Deborah Mann	Katherine and Tony Pine	Virginia L. Speed
Mr. and Mrs. Thomas C. Hoster	Timothy and Pamela Manthei	Debby and Mark Pirrung	St. Doris Foundation - Mr. and Mrs. Thomas Titcomb
George W Houk	Bret and Jenna Marr	Melanie and Tony Pitts	Mr. and Mrs. John C. Stanley, IV
Ms. Eleanor N. L. Howe	Catharine Maxey	Fred Pivitt and Karen Hodges	Kenyon Stebbins and Susan Lyman
Mr. and Mrs. James H. Howe, IV	K. C. and Louise McAlpin	Colleen W. Platt	David L. and Diane L. Steele
James and Evelyn Howell	William J. and Laura J. McCarthy	Alison Pollard and Joe Tinsley	Mr. Drew Steele
Jack and Susan Hufford	Mr. P. Abbott McCartney	Betsy Pollock and Mike Tiedeck	Stephen and Anne Steep
Emily Hughes and Joe, Ember, and Ada Graham	Anna and John McCoy	Leila Poullada	Eileen Steward
Stephen and Karen Hume	Ms. Virginia McCoy	Mr. and Mrs. Gerard Quinlan	Edward and Karla Stokel
Brian Hunt	Mr. and Mrs. David McLaughlin	Jim and Missy Rainear	Jerry and Barb Stonewater
Mr. and Mrs. C. James Hyslop	Jeff and Tracy McMath	Ambassador John Rakolta Jr (Ret.) and Mrs. Terry Rakolta	Michael Stornant
Mr. and Mrs. Peter M. Igoe	John and Mary Merrill	Mr. and Mrs. Lawrence Raymond	Stephen and Laurie-Jo Straty
Terry and Patti Jackson	Margo Bailey Mertaugh	Gaetan and Quan Gerville-Reache	Dave and Elizabeth Stuber
Ms. Greta Jacobsen	Jennifer and James Mesterharm	Carol and Douglas Rearick	Sturgeon River Pottery
Ted and Carol Jastal	Roger and Mary Ann Meyer	Christopher and Theresa Renker	Rob Suess and Sharon Mathison Suess
Ms. Marnie Johnson	Molly and Geof Meyers	Dr. and Mrs. Barton H. Reutlinger	Mr. and Mrs. Stephen G. Sweet
Katsy and Gordie Johnston	Mr. and Mrs. Ralph Miesel	Mr. John H. Rexford	Nina Swift
Dutch and Leslie Jones	Christopher and Kate Mitchell	Janie and Rick Richter	Janusz M. and Linda Szyzsko
Jeffrey and Beth Jones	Brad and Sue Moffatt	Ms. Sandi Riggs	Alexandra Taylor
Jim and Stephanie Jones	Libby, Ben, Luke and Julia Molland	Mary Ringwalt	Benjamin and Alexandra Texler
Joslin Family Fund	Joe and Beth Moran		
Michael Joyce	Karla and Daniel Morgan		

Stan and Sandy Thompson
 Larry and Pam Tietig
 Ed and Trudy Timm
 Chris Tracy and Michelle Tombro
 Tracy
 Paul Tripp
 C. Phil and Janet Trotter
 Stephen and Laura Trudeau
 Mr. and Mrs. Steven L. Trulaske Sr.
 Bill Valley
 Karen VanLandeghem and Ed
 Hartman
 Ron Vargason
 Mr. and Mrs. G. Sheldon Veil
 James and Mimi Vosper
 Ward and Eis Gallery
 Robert and Laurel Warski
 Kathy and Dan Wassman
 Mr. and Mrs. Richard W. Weaver
 Mr. and Mrs. John H. Webster
 Drs. Susan Galbraith and Jeffrey
 Weinstein
 Mr. and Mrs. Byron L. West
 Mr. Gill Whitman
 Laurie Whitmer
 Blair and Michelle Wieland
 Mr. and Mrs. Larry Wiethorn
 Kevin Scott Williams
 Edwin and Linda Willis
 Larry Willis and Robyn Ellis
 Wineguys Restaurant Group
 Antoinette and Vince Winkler Prins
 Todd and Jennifer Winnell
 Mrs. Margaret Winslow
 James and Darcie Witherspoon
 Wojnicki Family
 Wolverine Sign Works
 Anne Woodhull
 Dr. and Mrs. Phillip Woollcott
 Mr. and Mrs. Stephen Wright
 Mrs. Cathleen S. Zepelin

MEMBERS

Gifts of \$1 to \$499

Anonymous
 Vera Abar
 Anthony and Elizabeth Abbattista
 Jim and Chris Abbey
 John and Karrie Abbott
 Margaret Murdock Abbott
 Gerald and Jean Aben
 Dwain and Christina Abramowski
 Abuzz Creative
 Leanne M. Ackert
 Steven and Elizabeth Ackley
 Brian and Jane Adamczyk
 Mrs. G. Robert Adams
 Daniel and Carol Adams

Dave and Jasmin Adams
 Garrett and Beth Adams
 J. P. and Chris Adams
 Jim and Sue Adams
 Linda Adams
 Ms. Darinda Adlam
 Patrick and Susan Affholter
 Mr. Frederick Ager
 Mr. and Mrs. Frank S. Ahlich
 Gail and Phillip Aho
 Peter Aiello
 Alice Aikens
 Joan and Dick Ainsworth
 Robert and Marilyn Akers
 Alberto Albanelli
 Michael T and Karen Alberts
 Shane and Erin Albrecht
 Mr. Bruce Alexander
 Cecily and Brett Alexander
 Linda Alexander
 Martha and Stephen Alexander
 Mr. Roy M. Alexander
 Mrs. Stella M. Alexander
 Alexander's Plumbing and Heating
 Bob and Cheryl Alger
 Mr. and Mrs. Scott E. Allan
 Peter and Maribeth Allegrina
 Mr. and Mrs. Chris T. Allen
 Elise Allen
 Judy Allen and Patrick Ginley
 Peter S. and Susan Heuck Allen
 Renee Allen
 Rich and Katie Allen
 Richard and Pat Allen
 Dan and Kate Allore
 Mr. Douglas Allore
 Mr. Eric D. Alsberg
 Mr. R. Michael Ameel
 Allen A. and Margaret Ammons
 Peter Amster and Frank Galati
 Mr. and Mrs. Douglas D. Amstutz
 Mrs. Jonathan W. Amy
 Mr. and Mrs. Joseph W. Amy
 Ms. Theresa Amy
 Kathy Anane
 Mandy and Eric Andersen
 Dave Anderson and Sharon Fortner
 Mr. and Mrs. J. C. Anderson
 Mr. and Mrs. Jeffery W. Anderson
 Kirk and Carol Anderson
 Ms. Louise Anderson
 Mrs. Opal Anderson
 Paul and Joanne Anderson
 Rick and Sharon Anderson
 Bob and Alana Anderson
 Shirley A. Anderson
 Steve and Pat Anderson
 Eric and Sue Anderson
 Timothy and Christine Anderson

Mrs. Janine Andrew
 Andrew Kan Travel Service
 Mr. and Mrs. Currie Andrews, Jr.
 Mrs. Jeff Andros
 John and Kathleen Angell
 Holly and Mike Angileri
 William and Patricia Anshutz
 Jan and Alex Antalis
 Anton Family Foundation
 Mark and Denise Antonishen
 Don Antrim
 Mr. and Mrs. James A. Applegate
 Archambo Electric
 Richard and Julia Archer
 Mark and Debra Arendsen
 Arfstrom Pharmacies, Inc.
 Richard Arlen
 Paul and Nancy Armstrong
 Meredith Arneil
 Gene and Betty Arnold
 John and Linda Arnold
 Mrs. David Arnold
 Lori Arnold
 Mark and Carolyn Arnold
 Kit Baum and Paula Arnold
 Mrs. Sandra J. Arnold
 Lois Aroian
 Mr. and Mrs. Roderick D. Arvin
 Mrs. Charles Asbury
 Mr. David Asbury
 Mel and Debby Aschenbrenner
 Kathleen Aseltyne and Mark
 Brautigan
 Mrs. Carol M. Ash
 Darcy Ashman
 Mr. and Mrs. John Ashworth
 Sue Aspinall
 J.M. Astolfi
 Mike and Cathy Atchison and
 Family
 Mr. and Mrs. Harry Atkins, Jr.
 Glenna Atkinson
 Mrs. Charles Atkinson
 Joe and Kathy Audia
 Thomas and Dale Auffenberg
 Mark and Barbara Augenblick
 Jerry and Ruth Augustine
 Tom and Lisa Austin
 Mr. and Mrs. Steven Autore
 Brit and Dakota Averill
 Mr. Wayne Avis
 Jean Azar
 Dr. Catherine Baase
 Allen and Mary Ann Babcock
 The Babcock Family
 Mark and Linda Babich
 Matt and Debbie Babich
 Mr. Rick Bachhuber, Jr.
 David and Cheryl Bachleda

Ms. Barbara Bacon
 Doug and Indy Bacon
 Ms. Nancy Baerwaldt
 Kristen Baggott and Michael
 O'Brien
 Dr. Edward R. and Jane Ann Bahr
 Chris and Cindy Baiardi
 Craig and Barbara Bailey
 Thomas Bailey and Heidi Marshall
 Bob and Margi Bake
 David and Patricia Baker
 Jack and Susie Baker
 Josh and Molly Baker
 Meghan Baker
 Richard and Barbara Baker
 Tom and Sally Baker
 Birdie Baker
 Andrew and Linda Balderson
 Dr. and Mrs. Richard Baldwin, Jr.
 Roger and Margaret Baldwin
 Mrs. Sally Bales
 Laura Balinksi
 Brad and Dawn Ball
 Mr. and Mrs. J. Bruce Ball
 Lucas, Michele, Landon and Ethan
 Ball
 James and Mary Bandeen
 Ms. Leslie Banks
 Darryl and Maryle Barbe
 Mr. and Mrs. Patrick Barbour
 Gary and Ann Barfknecht
 Nancy and Paul Barker
 David and Sue Barkhausen
 Jeff Barlow
 Mr. Jeff Barnes
 Mr. Michael Barnes
 Charlie Barnett
 Steve Barney and Gretchen Olsen
 Nancy and Randy Barnhart
 M. Ardith Barnich
 Mr. and Mrs. Donald E. Baron
 Mrs. Margaret A. Barr
 Ray Barr
 Chris and Bob Barrett
 Rose Mary Barrette
 Ms. Deborah D. Barron
 Douglas Barron and Brian Goff
 Thom and Marianne Barry
 Jeffery and Ann Bartel
 Mr. Jon Bartell
 Drew Bartlett
 Jim Bartlett
 Nancy Bartlett
 Ms. Sharon Barton
 Tucker Bartz
 Earl and Sherry Bash
 Terry Basham, II
 Roger and Enga Bashore
 Ross and Valerie Bassett

Indre Rackauskas and Tom Basso	Catherine Bennett	Adella Blain	Brian and Diane Brady
Mr. and Mrs. Steven Bataran	Dr. and Mrs. Jeffrey A. Bennett	Elizabeth Blair Fine Pearls	Michael Brady and Linda Knibbs
Tina and Bill Bates	Norm and Kathy Bennett	Ms. Margaret L. Blaisdell	Brady's Carpet Cleaning
Dale and Carla Bauer	Darl and Brianna Bennink	Ryan and Kris Blake	Mr. and Mrs. Robert B. Braham
Mr. and Mrs. Lowell B. Baughan	Dr. and Mrs. James J. Beno	Keith and Rhonda Blakely	Jeff and Denise Brandt
Sarah and Matthew Baughman	Richard and Maria Bensel	Ms. Carla Blandford	Virginia Bransfield
Sydney and Mary Baxter	Christopher and Amber Benson	Matthew and Nancy Blandford	Dan Branson and Susan Jacobs
Bay Harbor Yacht Club	John and Sharon Benson	Ron and Kathy Blank	Glenn and Diana Brantley
Bay Inn of Petoskey	Mr. Ronald Benson	Richard and Connie Blazier	Bill and Bonnie Braun
Bay Street Orthopaedics	Brian Berg	Walter and Lynn Bleakney	Mr. and Mrs. Douglas Brautigam
Bay View Association	Heike and Steve Berghausen	Phyllis Blight	Patricia Bray
Jayne and Gregg Bayer	Ms. Bergin	David and Michelle Blint	Kathryn Breech
Ms. Susan Bayless	Jim Bergman and Penny Hommel	Ronn Blodgett and Gordon Masters	Gerald and Karol Breen
Jim and Wendy Bean	Drs. Ramon and Peggy Berguer	Robert and Marion Bloink	Mr. and Mrs. Douglas L. Brenton
Ms. Tracy Bean Chivetta	Berkshire Hathaway Home	Wayne and Cheryl Blomberg	William and Treva Breuch
Bear Creek Organic Farm	Services	Tom and Rosanne Bloomer	Jim and Barbara Brewer
Bearcub Outfitters	Dr. and Mrs. Alan Berlin	Keely Blosh and Jesse Lawrence	Mr. and Mrs. William D. Brewer
Ronald Bearup	Cynthia Berman	Danny and Elizabeth Bloxom	Rob Brezina
Ellen Beatty	Ms. Joan F. Bernardin	Herman Boatin	Dr. and Mrs. Christopher Brieden
David and Karen Beauchemin	David, Julie, Rachel and Isla	Don Bodzick	Dale and Kayla Briggs
Frank and Gail Beaver	Bernstein	Kathy Bodzick	Robert and Alyssa Briggs
Beaver Island Boat Company	Linda Berry	Marc and Joanna Boeckl	Dr. and Mrs. William A. Briggs
Barbara Bechhold	Robert and Christy Berry	Mac Boelens and Mary Upton	Christine Brigham
Mr. and Mrs. Fred N. Becker	Stephen and Cathyann Berry	Larry and Joanne Boerman	M.H. Bright
Ms. Linda Becker	Everett Berry	Mrs. Cary Ambler Boggs	Steve and Terrie Briley
Roger Beckman	Mr. David Maxwell Bertch	Mr. Manfred Bohlke	Gerry and Margaret Brindel
Mr. Charles A. Beckwith	Jessica Whitley Bertinelli	David and Vedy Boikess	Mr. and Mrs. Robert F. Brinich
Becky Thatcher Designs	Dr. and Mrs. Charles Besaw	Teresa Boisvert	Brett and Lauren Brinkel
Mr. and Mrs. David Bedau, Jr.	Mr. David Betts	Lance and Angela Boldrey	Mrs. Reynold Brinker
Mr. and Mrs. George Bednarik, Jr.	John and Shirley Betts	Mr. and Mrs. Frank E. Boley	Hillary Briolat
Mrs. Betty BeDour	Daniel and Elaine Beyer	Richard Steven Bollinger	Thomas and Kay Brislinger
Gregory and Linda Bedson	Shauna and Shaun Bezilla	Ward and Sandy Bollinger	Matthew and Betsy Britton
Marilyn Beerman	Mr. and Mrs. Larry Biddinger	Marvin and Drina Boluyt	John and Jeanne Broad
John and Dawn Beery	Mr. and Mrs. Neil T. Bidwell	Ms. Elaine Bolz	Mr. and Mrs. Daniel Brockman
Ms. Dolores Beetham	Mike and Kathy Bierlein	Mr. Robert Bondy	David and Sharon Brockman
Lowell and Jean Beethem	Patricia Bierlein	James and Sylvia Bone	John and Carol Brockschmidt
Ms. Joan Begeman	Big Stone Bay Fishery, Inc.	Mrs. Glenn Bonkosky	Michael and Robin Broder
Michael and Naomi Behrmann	Mary Lynn Bigelow	Charles and Julie Bookwalter	Richard and Christine Brodhead
David and Cathy Beier	Steve and Kathy Biggs	Bruce and Connie Booth	Tom and Sandra Brogger
John and Kathleen Beilein	Kevin E. Biglin	Julia and Jim Borgmann	John and Rhoda Brooks
Mr. and Mrs. Vincent P. Beilman, Jr.	Mr. and Mrs. James N. Bilbrey	Ms. Donna M. Boris	Lynn C. Brooks
Mr. Edward Belanger	Greg and Anne Billiard	William and Nancy Borland	Dr. and Mrs. Ronald W. Broquet
Pamela Belanger	Barbara Billings and Knute	Barrie and Wendy Borovsky	Dotty Reynolds Brotherton
Ryan Belanger and Jessica Sheets	Nadelhoffer	Mr. and Mrs. Stanley Borowski	Nathan and Kelly Browe
Andy and Cathy Bell	Kyle and Alana Billingsley	Mr. and Mrs. William E. Boruta	Bruce Brown and Pamela O'Malley
Jessamine Belland	Bill's Farm Market	Mr. and Mrs. Ronald Bos	Charles and Nancy Brown
Michael and Roberta Bellinger	Mr. and Mrs. Jay R. Bingham	Ms. Caro Gray Bosca	Mr. and Mrs. Douglas R. Brown
Mark Bellino	Birchwood Association of Mullett	Parley Boswell and Kennedy	Edie Brown
Tom Bellinson	Lake	Hutson	Erik and Meredith Brown
Mrs. Debra Bellor	Mr. and Mrs. Stephen J. Birkmeier	Jeff Botkin and Rhonda Maney	Pat Brown
William and Kristina Belonge	Mr. and Mrs. Leland S. Bisbee, III	Mr. and Mrs. Jacques F. Bourdeau	Richard and Christine Brown
Mrs. Leo Bemben	Carlton E. and Patricia Bishop	Mr. John Bovill, III	Mr. and Mrs. Robert O. Brown
Shari and Bob Bence	Jack and Diana Bishop, Jr.	Mr. and Mrs. Dan Bowers	Ronald and Judith Brown
Benchmark Engineering, Inc.	Sue A. Bissell	Jeff and Patti Bowers	Sally and Bill Brown
Mr. Lewis Bender	Dr. and Mrs. Robert Bitterman	Jeff and Kim Bowman	William and Gail Brown
Kenneth and Yvonne Bengelink	Mr. Joe Blachy	Mr. Richard J. Bowman	Rita Brubacher
David and Nancy Benjamin	Cara and Ray Black	Mr. Bernard W. Boyle	Robert and Sherilyn Brubacher
Mike and Beth Benjamin	Mr. and Mrs. William Black	James and Debra Bradford	Bruck Family
Scott Benjamin	Ms. Judith A. Blackburn	Dennis and Jackie Bradley	Kris and Allie Brueck

Mr. Christopher J. Brumleve	Randall and Sharon Bytwerk	Mr. and Mrs. Martin L. Casey, III	Mr. and Mrs. Charles Cleland
Brent and Barbara Bruot	Dean and Jodie Cady	Brandon Castillon	Babsi and Riley Clements
Tim and Susan Bruster	Dr. and Mrs. Michael Cady	Gary Catlin	Danny and Tiffany Clemons
Carole Bryan and James Martini	Cahill Family	Tom and Janet Cattel	Derek Clemons
Dr. and Mrs. Donald K. Bryan	Mike and Deb Calabrese	Kathleen Cavanagh	Laura Cleveland
Ms. Judy Bryan	Ms. Carol Calcaterra	Mrs. Thomas M. Cavanaugh	Dave and Nancy Cluley
Ms. Lisbet Bryan	Joan Caldwell	Carr and Jen Cavender	Nick and Erin Cluley
Mark and Janet Bryan	Mr. Joseph Callockio	Ms. Ginger Cawood	Mr. and Mrs. Russell P. Cockerill
Mr. and Mrs. William C. Bryan	Ms. Denise Cameron	Diane and Andrew Cesario	Susan and Don Coe
Greg and Patty Brynaert	Susan and Ben Cameron	Phillip and Lizz Chamberlain	Ms. Betty Coffey
Harrison and Sally Bubb	Kevin and Wendy Cammet	Anita Chamberlin	Ann M. Coffin
Jared Buckley and Patricia	Mr. and Mrs. George B. Camp	Richard and Carolyn Chambers	Anne and Bill Coghill
Kolowich	Jim and Margo Campbell	Mr. and Mrs. Brian Champion	Donald and Sarah Cohen and
Kathryn M. Buffington	John and Mary Campbell	Rene Chapdelaine	Family
Matt and Jayne Bugera	Mr. and Mrs. Shepherd S. Campbell	Riley Chapdelaine	Christian and Pamela Colby
Mr. and Mrs. Donald Buggia	Stephen and Amy Campbell	Ms. Sandra Chapp	Mr. Elwin Coll
David and Mia Buhl	Thomas and Nancy Campbell	Todd Andrew Chappell	Marc and Jayme Collier
Robert and Becky Buhl	Will and Carol Campbell	Leonard and Eleanor Charchut	Mr. Brian Clay Collins
Barbara Bulic	Mr. and Mrs. James M. Campisi	Ryan and Sara Charles	John and Barbara Collins
Mr. and Mrs. David E. Bullock	Britta Johnson Campton	Charlevoix State Bank	Keith T and Kathleen Collins
Eowyn and Iris Bund	Kathy Noyes Canada	Maggie Charlton	Mark and Deborah Collins
Mr. and Mrs. Jeffrey W. Buntin, Sr.	Carolyn Candler and Charles Leahy	Mr. and Mrs. Terry Chase	Mike and Renee Collins
Ms. Eileen M. Bur	Matt and Lisabet Canzano	Bill and Ann Chatterson	Molly Collins
Lindsey Leigh Bur	Ronald and Debbie Capp	Cheboygan Golf & Country Club	Sue Gay and Jim Collins
Mr. and Mrs. Frank H. Burdine	Michael and Barbara Carakostas	Gregory S. and Karen Cheeseman	E. Selden Collins
Joe and Missy Burger	Mr. and Mrs. James B. Carano	Ms. Cheryl Cheger-Timm	Clare Colnon
Mrs. Julie Burgess	Mrs. Susan M. Cardillo	Ms. Diane Cheklich	Howard and Pat Colthurst
Mr. Daniel A. Burk	Nora Cardinal and Pauline	Mrs. Taylor Chewning	Timothy Comello
Nancy J Burk	Cardinal-Mitchell	Dr. and Mrs. James P. Chiavaras	Sita Compton
Jim and Gina Burke	Jon and Megan Carfagno	William Chichester	Mary Ida Compton
Ms. Maureen Burke	Mr. Philip E. Carlin	Robert and Nancy Childress	Frank and Jody Comstock
Donald and Bernadette Burkhardt	Ann and Erik Carlson	Pete and Judi Chimner	Margaret and Jeffrey Comstock
Bruce and Diane Burnett	Donna Blomberg Carlson	Jon and Janet Child Chism	Susan and James Conboy
Bruce and Heidi Burnett	Tom and Kay Carlson	Mr. and Mrs. Donald Chmielewski	Maureen Conklin
Dr. and Mrs. Richard E. Burney	Sally Carmichael	Colleen and Jin Choi	Susan and Hugh Conklin
Dan and Diane Burns	James and Cynthia Carmody	The Chudler Family	Ty E. and Barbara Conklin
Erin and Jerome Burns	Heather and Scott Carmona	Christopher Churches	Eric and Sue Conley
George and Mary Burns	Kenneth and Barbara Carnwath	Ann Churchill	Bruce and Kathleen Conn
Mr. Timothy A. Burris	Annette and Tom Carothers	Mr. and Mrs. David Churchill	Judith Connett
Ms. Ann Joslyn Burrows	Ms. Beth Carpenter	Mr. William Ciccariello	Anthony J Conniff
Mr. George J. Burrows	Pamela and Glen Carpenter	Paul Cicchetti	Paul Connolly
Constance and James Burt	John and Marilyn Carpenter	William and Sandra Ciciarelli	George and Alyce Conrad
Burt Lake Marina Inc.	Ken and Mary Alice Carpenter	Marilyn Cimmerer	Michael and Sue Conti
Mrs. Sandra K. Burtch	Mr. and Mrs. Russell Carpenter	Lynn and Dennis Clare	Andrew J. and Charlotte Cooney
Dan and Carol Burton	Mr. David Carr	Clifford and Linda Clark	Sault Area Garden Club
Edson and Judy Burton	Emily Carr	Ms. Diane Clark	Mogli and Coop
Joseph and Karen Busch	James C. and Carole Carroll	John and Nancy Clark	Tom and Beth Cooper
Rob and Ellen Busch	Jennifer and Stan Carroll	Ms. Mary Jo Clark	C & L Cooper-Weidner
The Busemeyer Family	Philip and Tamara Carrott	Michael and Carolyn Clark	Phil and Kara Copeland
Bricker and Brenda Buseth	Craig and Brenda Carter	Ms. Patricia Clark	Mr. and Mrs. Richard Copeland
Stephen and Jonne Bush	Thomas and Michele Carter	Perry and Karen Clark	Anthony and Lori Coppola
Ms. Angelina Buskirk	Carter's Imagewear and Awards	Richard and Beverly Clark	Mrs. William J. Corbett
Paul and Denise Busman	Richard and Cynthia Cartmill	Richard and Diane Clark	Steve and Adriane Corlew
Gary and Bonnie Bussard	Kent and Christina Cartwright	Richard and Jodie Clark, Jr.	Sam Cornelius
Chuck and Cathie Busuito	Mr. and Mrs. Scott T. Cartwright	Richard Clark	Roger Cornell
The Buza Family	Brian and Kim Cary	Janet and Kevin Clarke	Mr. and Mrs. Paul Corrigan
Ellen Byerlein and Robert Sloan	Christine Casari	Dr. and Mrs. Richard Clary	Craig and Susan Corriveau
Mr. and Mrs. Walter G. Byers	Paul J. Casciani	Wayne and Glendora Clary	Don and Jayne Corwin
Rachel Byrd	Stuart and Carma Case	David and Diane Cleary	Mr. Daniel Costello

Mike and Darcy Costello
Colleen Coughlin
Gerald and Beth Coulter
John and Cynthia Coulter
Gretchen and Loic Couraud
Ashley Cousens
Anthony and Susan Covatta
Cove Island, LLC
Covelli Family Foundation
Dale and Anne Covy
Mr. and Mrs. Dan E. Cowan
Elizabeth Cowan
Beth and Christopher Cowie
Annette Cox
Dr. and Mrs. Clifford J. Cox
Mrs. DeWayne Cox
Walt and Susan Coyle
Mrs. Evelyn J. Coyne
The Cozad Family
Mr. and Mrs. Patrick Crahan
Mr. Alan B. Craig
David and Patsy Craig
William and Barbara Craig
Mrs. Rose E. Crandell
Ms. Katrina H. Crane
Michael and Alexa Crane
Robert and Sydnie Crane
David and Dianne Creamer
Hans Creutz

Mr. and Mrs. Daniel D. Creyts
Dr. and Mrs. George A. Cripps
Ben and Carla Crockett
Ms. Mary Jane Croissant
Micheal and Joanne Cromley
Mrs. George Crook
Mr. Thomas Crook
Ben Cross
Matthew Cross and Margaret Happy
Richard and Carol Cross
Steven and Amy Cross
Richard and Joyce Crossland
Mr. David R. Crothers
William and Theresa Crothers
Jack and Marilyn Crotty
Mr. and Mrs. David G. Crouse
Mr. and Mrs. Randy Crow
Eliza Crowder
Ms. Alison L. Crowley
Alice Crown
Paul and Julie Croy
Frank and Sherrill Crump
Shelly Culbertson
Peter and Karen Cullman
David and Joan Culver
Michael and Debra Cumming
Susan B. Cumming
Nancy J. Cunningham

Rick and Cathy Cunningham
Mr. and Mrs. Currie
Arthur W. Curtis, III
Mr. and Mrs. James V. Cusenza
Adam Cushman
Jeff and Peggy Cyphert
Melvin and Mary Ann Czechowski
John R Daiek
Bob and Jan D'Alcorn
James and Lou Anne Dale
Margaret and Terry Dalian
Joe and Cheryl Daly
Mr. and Mrs. John J. Daly, III
Marc and Lisa Damman
Julia and Joe Damore
Ethan Dankert
Mr. and Mrs. Thomas Dansbury
Wendy, Rachel and Sandy Darga
Mr. Walter S. Dark
Cheryl Darnell
Ms. Annette Dashiell
Charles and Tracy Datlen
Barbara Dau
Mrs. Sandra Dauch
Ms. Betty B. Davis
Bruce K. Davis and Heidi W. Hill
Edward and Cindy Davis
Dani Knoph Davis
Jim Davis

Kenneth and Debra Davis
Lee and Anne Davis
Scott and Kelly Davis
Thomas and Patricia Davis
Taryn Davis-Hanson
Mr. Ron Dawes
Ms. Darlene Dawood
Amelie and Jason Dawson
Margaret and Ted Dawson
Paul and Linda Dawson
Mrs. Trudy Day
Pat and Jackie Daylor
Vince DeAgostino
Olga Deak Trust
Mr. and Mrs. David H. Deal
Mr. Barton N. Dean
Mr. Carl W. Dean
Craig and Kelly Dean
Robin DeBlake and Brent Cook
Sylvia and Beckett DeBord
Mr. Gerald Decker
Robert and Patricia Decker
Mrs. Margret Dee
Jack and Jenny Deegan
Jan and Don DeFosset
Maureen Dekruif
Dennis and Kitty Delaney
Maureen Delaney-Lehman
Mr. and Mrs. Paul Delcourt



Sarah Koetje with members of the Emmet County Friendship Center on a spring Wildflower Walk.

Emilie and Matthew Delehanty	Dave and Libby Domann	Dennis and Jacque Durco	Ms. Maureen Engle
Michael and Jean Dell	Cynthia Donahey and Art	Mr. and Mrs. Thomas J. Durfee	Jack Engledow
Anthony DeLuca	Schoolmaster	Mr. Michael Durkin	Carl and Linda English
Ms. Linda C. DeMeritt and Mr.	Andy and Ryan Donahoe	Duval Family Walloon, LLC	Mr. and Mrs. Robert A. English
George Byrnes	Rick and Deb Donahoe	Mary Dye	Martin Ensman
Richard C. Deming	Karen Donaldson	Ronald and Nancy Dye	Karl Eppler and Lynn Tryban
Sue Dempsey and Greg Czarnecki	Rick and Jean Donaldson	David Eagleson	James and Phyllis Epps
Cliff and Jane Denay	Brandon Donlon	Donna and James Earhart	Adam and Laura Epstein
Karen DenBesten and Caesar	Mr. and Mrs. John Donnelly	East Jordan Plastics	Joel and Nancy Epstein
Citraro	Doornbos Family	Charles and Joanne Eater	Carole Erbel and Frank Shumway
Mr. Barry Denison	Gretchen G. Dorian	Mike and Cheryl Eberhart	Steve and Kathy Erber
Ms. Ann Denison	Ms. Deborah Dorn	Jeff and Ann Ebert	Loretta Erdmann
Tim and Marta Dennis	David and Stephanie Dorner	Jeffrey and Patricia Ebling	Marshon Erickson
Kate and Bob Denten	Dorset Charitable Trust	Mr. and Mrs. Walter Ebling	Dr. and Mrs. Ronald Erkis
Dentistry By the Bay	William and Karen Dotson	Glenn and Elizabeth Eccleston	Phillip and Carla Erlewine
Tom and Sharon Derda	John and Marilyn Doty	Ms. Lynn Eckerle	Mr. Glenn P. Ernst
Carol Derkin	Mr. and Mrs. Dennis C. Dougherty	John and Margaret Eckhold	Mrs. Charlotte S. Ernster
Brenda DeRossa	Pat and Julie Dougherty	Mark and Marie Eckstein	Ms. Sandra Esch
Paul and Mary Derwich	Douglas Lake Bar and Steakhouse	Mike and Jeanne Eddy	Sara Eshelbrenner and Danny
David and Kimberly DeSantis	Drs. James and Maureen Doull	Ms. Paula Edgar	Rotert
Paul and Kari Desantis	Michael and Cheryl Downey	Charles Edwards and Priscilla	Michael and Debbie Esposito
Mr. and Mrs. Terence B. Desmond	Elisabeth Doyle	Mead	John and Susan Esser
Detroit Historical Society	The Dozeman Family	Mrs. Herbert H. Edwards	Heather A. Esterline
John Devor	Chuck and Donna Drake	Marge Edwards	Don and Judi Estes
Mrs. Delano deWindt, II	Madeline and Dee Drake	Mr. and Mrs. Morgan H. Edwards	Frank and Rochelle Ettawageshik
Mr. and Mrs. Richard E. Dexter	Mark and Diane Drane	Brendan and Abby Egan	Jim and Lynn Evans
Mr. and Mrs. Robert DeYoung	Doug and Tricia Drenth	Bob and Gail Egan	Mr. and Mrs. Lynn R. Evans
John and Nancy Dick	Mr. and Mrs. Kenneth G. Drenth	Scot and Jilanne Egleston	Scott and Ellen Evans
Mr. and Mrs. Al Dicken	Mr. and Mrs. Forest Townsend	Linda Ehlerdt	Ms. Katherine Evashevski and
John and Laura Dickinson	Driggs	Dr. and Mrs. James Ehrnst	Charle Landry
Ms. Cynthia Dickstein	Mr. Jerry Dennis Drobek	Steve and Nancy Eibling	Dean and Vicky Everett
Suzanne Dietrich	Drost Landscape	Tom and Marg Eicher	Mrs. Virginia Ewing
William and Janis Dietrich	Drummond Island Grooming	Kevin and Therese Eichhorn	Lynda Rossi, Mark, Max, and Liam
Jane Diller and John Stevens	Association	R. David and Tina Eick	Eyster
Mr. and Mrs. Joseph H. Dillhoff	Peter and Tracey Dryovage	Erik and Robin Renker Eidsmo	Carol Faber
Mrs. James L. Dilworth	Mrs. Howard V. Dubin	Anne Eiterman	Martha and Thomas Faes
Mr. John D. DiMartino	John and Jeri Duerr	Michael and Cindy Ekkens	Jack and Karen Faett
Jack and Susan Dingle	Charles Duerr Jr	Lee and Mary Ekstrom	Mr. and Mrs. John N. Failey
Mark and Mary Dingman	Dan and Janet Kohler Dueweke	Mr. and Mrs. Charles Elbert	W. W. Fairbairn and Sons, Inc.
Richard and Laura Dinon	Pamela and Patrick Dueweke	David Elder and Melinda Snell	Mr. Tom Fairbairn, Sr.
Mrs. Jacqueline Dipert	Mary Lee and Mike Duff	Ramsay M. Elder	Doug and Barbie Falor
Dan and Robbe DiPietro	Lawrence and Donna Duffield	Dr. and Mrs. Lynn Elfner	Mr. and Mrs. Kevin Farr
Mr. and Mrs. Arthur R. Disbrow	Brent and Sandra Duffiney	Dr. Robert Eliassen	Patrick and Julianne Farrey
Brenda and Richard Discher	Dr. and Mrs. Frank K. Duiven	Mr. Michael S. Elledge	Mr. and Mrs. Michael Farrimond
Ms. Leslie Dixon	Dr. and Mrs. John H. Duiven	Kenneth Elliot and Stephanie	Sandy and Travis Farris
Thornton Dixon	Mrs. Paula Dukat	Jacobsen	Lori and Steve Farrow
Lucy Dobson	Kelly and Gary Dumas	Mr. and Mrs. Brett Ellis	Carolyn Farrugia
Dr. and Mrs. Michael Doctor	Mr. and Mrs. Ted L. Dumbauld	Kyle Ellis	Dr. and Mrs. Charles Farrugia
Robert and Sarah Dodge	Patricia Duncan	Melissa Ellsworth	Gary and Denise Fate
John and Julia Doebe	Nancy Dunkle	Ellsworth Family	Jack and Barb Favret
Ms. Sara Doecke	Mr. Robert Dunlap, Jr.	Ali and Laura El-Mohandes	Mr. Thomas P. Favret
Maggie Doherty and Cole	Bruce and Nancy Dunn	Andrew and Jacalyn Elsoffer	Dr. and Mrs. Robert G. Fawcett
Schneider	Mr. and Mrs. Dale Dunn	Dr. David Elwell	Susan E. Fawcett
Nora Doherty and James G. Smith	David and Becky Dunn	Pat and Jay Emmendorfer	Dennis and Faye Fear
Mr. William P. Dohm	Keith and Beth Dunn	Mr. Tom Enders	Mr. Ken Federspiel
Bryan and Jill Dole	Kent Dupont	Gordon and Lynnette Engdahl	Dr. Craig and Therese Fedore
Mr. and Mrs. Peter Dollard	Donald and Kathy Duquette	Joel and Cynthia Engel	Gary Fedus
Daniel and Kristin Dolsen	Jacqui Durand	Mr. John E. Engel	Fred and Judy Feldkamp
John and Sharon Dolton	Michael and Elizabeth Durbin	Rose Enger	R Powell and Sandra Felix

Mark and Jane Feltenstein	Bridget and Nathan Fleshman	Ken and Nancy Freeman	Frank and Elizabeth Geiser
Estate of Bettie Case Fenton	Zachary Fletcher	Mr. and Mrs. Arthur E. Frentz	Greg and Heidi Geissbuhler
Mr. and Mrs. James M. Fergus	Mr. and Mrs. Dean Fleury	Ms. Elizabeth Frey	Sheila Gelman and David
Fergus Co, LCC	Ms. Karin W. Flint	John Frey	Greenblatt
Ms. Janice Ferguson	Flowers from Sky's the Limit	Ms. Twink Frey	Ms. Carol L. Genee
Mr. and Mrs. Neil E. Ferguson	Calvin Floyd	Friends of the Boyne River	Lynn and Ken Gentner
Ferguson and Chamberlain Assoc.	Mr. and Mrs. Ted Flynn	Mrs. Stanley Friesen	Tom and Jane George
Christopher J. and Michelle R.	Madeline and Martin Flynn	George and Maiga Friess	Mr. and Mrs. Thomas Geraghty, IV
Fernandez	Mary Flynn	Ms. Belinda Friis	Mr. and Mrs. John P. Gergel
Anne and Brian Ferrilla	Julia Fogarty and Fred W. Renker	Carrie Frisbie	Louis and Joan Gerigk
Cynthia Ferrini	Mr. and Mrs. Jon Fogg	Mr. and Mrs. Steven Frisbie	Brad and Sherry Gerlach
Mr. Bruce Ferris	Mr. and Mrs. Gerald H. Fohrman	Ms. Ursula Froehlich	Gary and Sandy Gerlach
Dan and Stephanie Ferris	Jim and Kris Fontichiaro	Keith and Joanne Froelich	Ms. Kathy Germain
David and Trish Ferris	Jerry and Mary Foote	Mrs. Linda A. Froelich	Mr. and Mrs. John B. Gerrish
Charles Feucht	Jeffery Foran	William and Linda Fry	Mr. and Mrs. Fred Geuder
Rich and Mary Fichter	Jack and Stacey Forbes	Dr. and Mrs. W. Randolph Frykberg	Ronald and Patricia Gibbs
Mrs. Audrey M. Fick	Gary and Adele Forbrig	Ann Fuehrer	Dr. and Mrs. Lawrence L. Gibson
Paul Fiedorek	Ms. Gretchen Ford	David and Vicki Fuger	Robert and Dorothy Gibson
Jim and Kiley Fields	Peter and Sarah Ford	Martha Lancaster and Doug Fuller	Zachary Giegler
Mr. Terrance Filter	Jim and Judy Foreman	Jane Funfgeld	Ryan and Mindy Giem
Mr. David Findlater	Mr. and Mrs. William D. Foren	Ronald Funke	Mark and JoEllen Gilbert
Chad and Kacey Finefrock	Dennis Fornal	Ms. Mary E. Furseth	Merry Gilbert and Robert Murray
Abigail Fink	Bruce and Mary Sue Forni	Chris and Martha Fusco	Kingsley J Gilchrist
Dawne and Larry Fink	Mrs. A. Marshall Forsberg	Tony and Danette Fusco	Dr. and Mrs. James C. Gillingham
Chris Finkbeiner	Mrs. Charles W. Forsberg	Douglas and Cheryl Gabel	Ms. Judith A. Gillow
Mr. Lee Finkel	Mr. James Forse	Ms. Gretchen Gabler	Laurel Gilmour-Smith
Mr. and Mrs. Michael Finn	Henry and Debbi Forster	Dan and Leah Gabrek	Douglas and Anne Gilpatrick
First National Bank St. Ignace	Mr. Michael Forster	Mr. and Mrs. Sam C. Gaither	Ira and Deborah Ginsburg
John and Suzanne Fischer	Mr. and Mrs. Wayne S. Fort	Julie and Jerry Galante	Erin Girdler
Mr. and Mrs. Michael Fischer	Anne L. Foster	Dr. and Mrs. Glen Gale	Mrs. Pat Giteronke
Tracy Fischer	Kathleen Foster and Gustavo Serra	Maryann and John Gall	Dr. and Mrs. Kenneth Gitlin
Gray and Carol Fischer	Mr. and Mrs. Robert B. Foster	Tom and Jaci Gallagher	Mr. and Mrs. Charles Glass
Richard and Ilene Fischman	Robert and Ruth Fountain	Ms. Joyce A. Gallegos	Mr. and Mrs. Stephen Glazek
Mrs. William A. Fisher, II	Tony and Julie Foust	Ron Gamble	Mr. Michael Glentz
Barbara Fisher	Mr. and Mrs. Richard Fowler	Mr. and Mrs. Howard K. Gandelot	Mrs. Joy L. Gloer
Benjamin and Miranda Fisher	Ron Fowler	Mr. Rafael Garcia	Jim and Jill Glowniak
Charles and Eileen Fisher	Helen Fox and James Koopman	Mr. and Mrs. Jonathan M. Gardey	Michael and Adele Glusac
John W. Fisher, III	Lucius and Jayne Fox	Mrs. Rudolph H. Garfield	Mr. Neal Godby
Kurt Fisher	Ms. Linda Foy	Christopher and Ann McCarthy-	Mr. and Mrs. Richard J. Godfrey
Mr. and Mrs. Raymond Fisher, Jr.	Kristine Fracassa	Garland	Mr. Kenneth Francis Goebel
Rick Fisher	Mark and Patty Fralick	Mrs. Carol Garlinghouse	Joyce Goff
Rob and Kaye Fisher	Steven and Karen Frame	Robert and Elizabeth Garner	Mrs. Richard E. Goff
Tim and Sara Fisher	Mr. Dino Franchino	John and Sue Gillikin Garr	Corrianne L Gokee
Evan and Kelly Fitts	Gary Francis and Kathy S. Breedlove	Patrick and Joyce Garrett	Howard and Meredith Goldberg
Frank and Donna Fitzgerald	Mr. and Mrs. Dan Francis	James and Susan Gartin	Drs. Dan and Jane Goldberger
Michael and Rose Fitzgerald	Jim and Kaye Frang	Chip and Megan Garver	Mrs. Mary B. Gonne
Peter Fitzgerald	Bonita and Sylvan Frank	Gregg and Debra Garver	George and Judith Goodman
Scott and Anne Fitzgerald	Mr. and Mrs. Bruce Frankel	Ms. Heather M. Gates	Tom and Julie Goodrich
Ginny and Ed Fitzgerald	Scott and Ellen Franzen	Deborah Gauntlett and Philippe	Garon Gopigian
Mr. and Mrs. David K. FitzSimons, Jr.	Mr. Calvin Frappier, II	Job	Andrew Wesley Gordon
Ms. Darleen Flaherty	Mrs. William Frasch, Jr.	Chester Gauss, III	Mr. and Mrs. John J. Gordon
Nancy Flaherty	Sarah Fraser	Gary and Katie Gauthier	Rev. Robert and Debra Gordon
Mr. and Mrs. Flanagan	Mr. Ronald B. Fratrack	Sandra Gay	Mr. and Mrs. John R. Gosnell
Ann and Robert Flanagan	Cathy and David Frazee	Mark and Diann Gaylord	Tyler and Kelsey Gostinger
Lloyd and Susan Flanders	Ms. Mary Frazier	Raymond and Rita Gaynor	Mr. and Mrs. Roger J. Gowell
Theresa Flange	Ruth Freebury	Kim Gebbie	Mr. Christopher J. Gowman
Ms. Mary Alene Flanigan	Dr. and Mrs. Lawrence S. Freedman	Richard and Holly Gedert	Michael and Janet Goyne
William Diener and Dion Flannery	Robert Freeman	Guy and Danielle Gehlert	Mr. and Mrs. Mark D. Grace
Brendan and Mary Fleming	Stefany Lester Freeman	Mr. Geik L. Geiken	Scot Graden

Mr. and Mrs. Max H. Graff, Jr.	Mr. and Mrs. Charles E. Gustafson	Christina Hanssen	Andrew, Emma and Julia Healy
Allen and Ruth Graham	Edwin Willis Gustafson	Larry and Maureen Hansz	Keith and Diana Hearit
Laurie and David Graham	Dan and Mitzie Guthrie	Ed and Sally Hara	Chris and Lisa Hebb
Dean and Nancy Graham	Joseph and Tara Guthrie	Roberta Hardacre	Patty Hebenstreit
Mr. Kingsley F. Graham	Jennifer Whittaker Guthrie	Ms. Donna M. Hardenberg	Dr. and Mrs. Douglas D. Hebert
Margie Graham and Nancy Whitmyer	Mr. and Mrs. Ralph B. Guy, Jr.	Mr. and Mrs. Hord Hardin, II	Mr. George C. Hebert
William and Louise Graham	Dan and Anne Guyer	Mrs. Frank Harding	Mr. Michael Hecht
Mr. and Mrs. Ziba Graham, Jr.	H. T. Roofing Co.	Jack and Dianne Hardy	Peter and Susan Hedemark
Mrs. Barbara BohlsGraham	Robert and Jennifer Haase	Ms. Michele Harmala	Dave and Donna Heeres
Timothy and Susan Grajewski	Helen Habicht	Mike and Andrea Harmeling	Bill Heesch and Judy Gunderson
Mr. and Mrs. James Grant	Ms. Patricia Hack	Mrs. Judith C. Harmon	Linda Hegstrom
Michael and Christine Grant	Mrs. Donna Hackett	Carl Harms and Jay Regenstreif	Roger and Jean Heimbuch
Lawrence and Sue Graves, Jr.	Vickie Hadaway	Ben and Allison Harrell	Mr. Jerry Heinrich
Ms. Ash Green	George and Mary Haddad	Sam and Susan Harrell	Robert Heisler
Doug and Julie Green	Mr. and Mrs. Lee O. Haddix	Ms. Judy Harrington	Ms. Linda Heller
Mrs. Robert P. Green	Mr. Mark Haddox	Michael and Claudia Harrington	Mr. and Mrs. Peter S. Hellman
Ms. Marjorie Green	Chris and Kelly Haenni	Michael and Michelle Harrington	Paul and Annie Helms
Mrs. Rose Green	Richard and Margaret Hagelberg	Mike and Jacque Harrington	Rick and Leslie Helwig
Ms. Dawn E. Greene	Charles C. and Jacqueline Hagen	John and Diane Harris	Mr. and Mrs. Richard A. Henderson
Mr. and Mrs. Robert D. Greene	Mr. and Mrs. Arthur Hailand	Mrs. Virginia Harris	Mrs. Valerie Hendricks
Bill and Julie Gregory	Mr. and Mrs. James B. Haines	Mr. and Mrs. William A. Harris	David and Kitty Hendrix
Scott and Paula Greig	James and Veronica Haines	Mrs. Jackie Harrison	William and Betty Henne
Patricia Greka	Mr. and Mrs. Robert R. Halderman	Jeanne Harrison and Paul Hysen	Mr. David H. Henning
Ms. Gretchen L. Grenell	Stanley Hale	Mr. and Mrs. William H. Harrison, Jr.	Kurt and Melinda Henning
Bill and Ruth Gretzinger	Patrick and Cynthia Haley	Ms. Heather Harrod	John C. and Linda Henry
Ray and Judy Greubel	Ms. Sara Haley	Mr. James Hart	Mr. and Mrs. Donald F. Hense
Paul and Lynn Greve	Mr. and Mrs. John M. Hall	Eric Hartlep	Arnold and Patricia Herberg
John and Jeri Griffin	Jon and Kris Hall	Hartlieb Family	Bruce and Joyce Herbert
Jon and Penelope Griffin	Kevin and Dawn Hall	Ms. Lucy Hartlove	Mrs. Frances Herdon
Susan Griffin	Lindsay Hall and Solomon Harvey	Mr. and Mrs. Charles R. Hartman, III	Shep Hermann
Richard Grimes	Paula and Chic Hall	Mr. and Mrs. Elmer L. Hartman	Mr. and Mrs. Christopher Heroy
Mark and Sue Grimme	Susan Hall	John Hartman and Barbara Belfore	Mr. and Mrs. Michael Heroy
Dean Grinnell	Jeffery and Jane Halstead	Robert and Sandra Hartman	Thomas J Herrmann
Bob and Karen Grisnak	Ted Halsted	Richard A. and Mary Beth Hartrick	Chick and Cyndy Hershberger
Mary Grissom	Mark and Barbara Halsted	Mr. and Mrs. William C. Hartwig	David and Amy Hesler
Barbara and Richard Groen	Mr. and Mrs. George Halter	Mr. and Mrs. Daniel W. Harvey	Sean and Jacqueline Hettich
Ms. Martha Kline Grose	Mr. and Mrs. Robert A. Hameister	Jack and Judy Harvey	James and Diane Hewson
Greg and Mary Grosvenor	Patricia Hammer	Kevin Harvey	Andy and Suzy Hick
Buzz and Nancy Grote, Jr.	Mr. Peter Hammerschmidt	Jim and Jesseca Haslock	Patrick and Kathleen Hickey
Mr. Robert C. Grove	Edward and Anne Hammond	Ali Hassani	Todd Hickox and Carmen Ventocilla
Kevin and Terry Groves	Joseph Hance	Art and Betsy Hasse	Steven and Cindy Higgins
Stephanie A. Grozner and Gregory Moyer	Genie Hancock	Mr. John Hastie	Dr. William and Tira Hightower
Mr. and Mrs. David L. Grumman	David and Wyn Ellen Handwerker	John and Sarah Hastings	Mr. and Mrs. Johnson Hightower
Robert and Jan Grupp	Ms. Eva Hanel	Michael and Ellen Hatch	Nancy Higley and Don Ball
Constance J. Grzanka	Kent and Marlene Hanert	Robert and Christine Hathaway	Dr. Hashem Hilal
Dave Guanci	Mr. and Mrs. Henry Hanflik	Ms. Jill Haungs	Hilda of Harbor
Richard and Judith Guernsey	Tom and Cheryl Hankins	Jim and Sarah Haveman	Brandon and Katy Hill
Roger and Merry Guernsey	Mrs. William A. Hanley, Jr.	Sue and Dave Haviland	Brian and Leslee Hill
Susan Guerra	Chris and Richard Hanley	Joe and Joanne Hawkins	Frank and Becky Hill
Casey and Joe Guild	Mrs. Joette Hansen	Kem and Mary Hawkins	Julie Hill
James and Sharon Gulau	Karl and Michelle Hansen	Nancy and Richard Hawkins	David and Karen Hill
Mr. and Mrs. Richard M. Gulau	Mary Sue and Dick Hansen	Jean Kandt Hawkins	Ms. Kathleen S. Hill
Dr. and Mrs. Edwin Gullekson	Ms. Wild Hansen	Rev. James P. Hayden	Rich and Judy Hill
Mr. and Mrs. Fred N. Gundrum	Melissa Hansen	Mrs. John R. Hayes	Rich Hill
Peter and Sarah Gurney	Steve V. Hansen	Daniel and Kim Hayes	Robin and Jill Hill
Mr. and Mrs. William B. Gurney	Mr. Verle Hansen and Ms. Cheryl Staats	Pattie Hayes and James Bloch	Scott and Catherine Hill
James and Barbara Gusfa	Walter and Brigid Hansen	Mary Lou and Dick Hazleton	Mrs. Shirley Hill
	Mrs. Janet Hanson	Ms. Margaret Smyth Head	Mirren and Jeannette Hill
		Blair and Sandra Marie Headrick	

Gus and Nancy Hillenbrand	Ms. Gail Hosnedle-Kyle	Bob and Ann Ivinskis	Dr. and Mrs. Marty Jones
Mr. John A. Hillenbrand, II	Ronald and Mary Hosner	Kirk and Lynne Jabara	Mrs. Nancie Jones
Dennis and Diana Hilligan	Mr. and Mrs. David H. Hoster, II	Brian and Carroll Jackman	Steve Wolf and Sherry Jones
Merrilee and Scott Hill-Kennedy	Mr. and Mrs. Frank B. Hoster	Mr. and Mrs. Gregory Jackson	Ms. Sherren Jones
Ms. Pamela Hilton	Mr. Benjamin Houck	Denise and Jamie Jacob	Peter and Janine Jonker
Dave and Ann O'Neill Hilty	Will Howard	Roger and Patricia Jacobson	Jenna Jontz
Mrs. Dale R. Hines	James F. and Catherine Howe	Stuart and Sheila Jacobson	Dr. and Mrs. Jon Jontz
Ken Hinton and Nancy Devon	Mr. Nelson Howe	Bonnie Jahn	Robin Jordan and Larry Liebler
Greg and Megan Hintz	Matt and Susan Howell	Karen and Hank Jallo	William and Patricia Jordan
Dr. and Mrs. Richard M. Hirr	Mr. and Mrs. William J. Howell, III	Mr. Holt James	John and Kathleen Jorgensen
Ed and Nancy Hirschenberger	Joe and Lisa Howie	Jeff James	Mr. and Mrs. George J. Joseph
Mr. Kenneth Hixson	Reed and Sally Howlett	Gib and Jennifer James	Mr. Michael Joseph
Mr. and Mrs. A. Paul Hoadley	Bob and Karel Howse	Sherri Jameson	Susan Joslin
Ms. Susan Hochbein	J.B. and Cathy Hoyt	Mr. Bill P. Jamnick	Dr. and Mrs. Dennis M. Joy
Ms. Margo L. Hodder	Todd and Beth Hoyt	Larry and Gloria Janness	Amy Naylor Joye
Mr. Jim Hoddy	Ms. Kathy Hrabak	Paul and Denise Janness	Steven and Ann Judd
Richard and Patti Hodge	Mrs. Kitty Hramiec	Noah and Joh Jansen	Mr. and Mrs. Terry Judd
Ms. Therese Hodges	Carol Huard	Vicki and Carl Janssens	Ms. Katherine Juhasz
James and Carol Hodgson	Mr. and Mrs. David R. Hubbard	Melanie Jaramillo	Jennifer Jurgens
Mr. and Mrs. Eugene P. Hodulik	Stephen and Kimberly Hudolin	Dan and Patty Jarzabkowski	Alexis Kaczynski and Eric
Caroline Hoefferie	Mrs. Pauline K. Hudson	Jim and Rebecca Jeakle	Grandstaff
Lori and Ken Hoehn	Lindsey and Patrick Huey	Cynthia and Roland Jean	Naomi Gottlieb-Miller
Ron and Pat Hoekman	Barb and Jerry Huey	Mrs. Ardenne Jeffrey	Dr. and Mrs. Hermann and Julie
Nancy Hoekstra	Steve and Sally Huffman	Michael and Janet Jenkins	Kaebnick
Mr. Paul T. Hoelderle	Steve Hufford	Roxanne Alfsen and Richard Jenkins	Don and Nancy Kaegi
Linda and Denny Hoemke	Heather Huffstutler and Shaun	Mark Jenness	Anne Kairis
Dr. and Mrs. Gene O. Hoerr	Ulrich	Bernard and Ann Jennett	Mr. and Mrs. Raymond Kalinowski
David E. and Ellen P. Hofacker	Suzanne and Dennis Hug	Julie and Scott Jenney	Eric and Vel Kammermann
Robert J. and Linda Moberly Hoff	Mr. and Mrs. Dennis R. Hughes	Mr. and Mrs. Donald J. Jennings	Kelly Smith Kao
Mr. and Mrs. Stephen Hoffius	Mr. John C. Hughes	Kymberli Jennings	Michaleen and Nick Karay
Corrine Hoffman	Tracy Hughes	Mr. Louis Jessick	Ms. Kathy Karenko
Lisa Hoffman	Frank and Debra Hull	Lewis and Mary Lou Jewell	Dr. and Mrs. John Karkosak
Mr. and Mrs. John E. Hoffman	Peter and Jane Hull	Jex Fischer	Mr. Gary Karp
Mr. and Mrs. John Hoffman	Sally Hunt	Ellen Jodway	Jessica and Mike Karr
Mark and Mary Hramiec Hoffman	MaryCarol and Mark Hunter	Johan's Pastry Shop	Mr. Douglas Kasamis
Mr. and Mrs. William W. Hofmann	Robert and Susan Huntington	Greg and Sally John	Mr. Mike Kasamis
John and Candis Hogan	Al and Julie Hurd	Anthony and Tresa Johnson	Mr. David Kasievich
Kristin Hoganson	Ms. Sue Hutchinson	Rebecca Johnson	Mr. Gerald S. Kaspyk
Linda Hoisington	Mr. William Hutchinson	Chuck and Lynette Johnson	Mr. and Mrs. John E. Katt
Susan and Bruce Holappa	Dr. and Mrs. John Hutto	Ms. E. Judy Johnson	Dr. and Mr. Harold V. Kaufman
Gregory Holaski	Aimee Huyser	James and Ruth Ann Johnson	Anton and Rosalinde Kaufmann
William and Marilyn Holcomb	Mr. and Mrs. Patrick Hylant, Sr.	Jerome, Sally and David Johnson	David and Leela Kausch
John and Karen Holdsworth	Ms. Catherine Iansiti	John and Dorothy Johnson	Kevin Kavanagh and Renee
Holiday Vacation Rentals	Daniel and Erin Ibele	Katy Johnson	McDuffee
Mardie and Huddy Holland	Debbie Ide	Mr. Lambert Johnson	Scott and Eileen Kearfott
Andrew and Dana Hollenbeck	Will and Laura Igoe	Ms. Lisa Johnson	Bill and Barbara Keating
Bob and Sara Holmes	Brendan and Cathy Ingalls Family	Mike and Liz Johnson	Kathleen Gallagher Kedzierski
Sue and Bill Holmes	Ms. Nancy D. Inglis	Mr. and Mrs. Richard J. Johnson	Daniel Keebler
Charles and Lori Holmquist	Rebecca and Scott Injerd	Ruth Anne Johnson	Joseph Keedy
Mr. and Mrs. Robert B. Holt, Jr.	Ironwood Construction Company,	Tom and Pat Johnson	Kathy Keefer and Mark Mutchler
William and Tracy Holt	LLC	Tom and Diane Johnson	Mr. and Mrs. Geoffrey Keenan
Mr. and Mrs. Sidney G. Holthaus	Gunnar Isaac	Mrs. Cecelia H. Johnston	Ken and Sandy Keiffer
Reynold and Nelva Homan	Tom Isaia	Margaret E Johnston	James and Diane Keighley
David and Tracy Hood	Mike and Penny Isermann	Pat Johnston	Michael and Amy Kelbel
Mrs. Jody Hopkins	Kenneth and Barbara Isham	Keith and Margaret Jolly	Kelbel Pharmacy, Inc.
Jim and Joan Hornak	Timothy and Kay Ismond	Ms. Paula A. Jonas	Marilyn Kelemen
Susie and Wes Horner	Lynn Ittigson	Dennis and Joyce Jones	Daniel and Norene Keller
Mr. and Mrs. Michael P. Horowitz	Mrs. Ann Iverson	Ms. Kristina Jones	John Kelley
Ruth Jaffe and Paul Horowitz	Mr. and Mrs. James R. Ivey	Mr. and Mrs. Mark Jones	Mary Jane Kelley

Richard and Barbara Kellogg	Bill and Sue Klco	Tori Kraese	Dale and Gloria Landes
Mrs. Anne Kelly	Rick and Lorraine Klein	Ms. Donna M. Krall	Connie Landis
Jim and Pam Kelly	Robert and Donna Klein	Dr. and Mrs. Michael Kramer	Robert L. Landis
Jack and Alice Kelly	Dr. Benjamin J. Kleinstiver	Rebecca Philipp-Kranig and Bradley Kranig	Scott and Cynthia Langton
Matthew L. Kelly	Mr. Daniel W. Klenczar	Bill Krause	Ligita Lapins
Ms. Susan A. Kelly	Ms. Carolyn K. Klender	Becky Kreag	Mary and Jim Larimer
Ken and Sally Kelsey	John and Madalene Klepach	Dennis and Susan Kreeger	Billy and Margaret LaRocque
Barry and Deborah Kempa	J A Kless	Ms. Vanessa Kreft	Craig and Susanne Larrabee
Sally Kennedy	Jim Klewicki	Cheryl Krehbiel	Mr. Hugh W. Larsen
Scott and Kelly Kennedy	Don Kline	Kit and Laura Kreid	Mrs. Linda D. Larsen
Mr. and Mrs. Patrick Kenney	James and Kathryn Kline	Vic and Toni Krisko	Allen and Debra Larson
Mr. and Mrs. Guy R. Kenny	Meg Kline and Ben Brussee	Mr. Eric P. Krol	Kenneth and Lynn Larson
Ms. Gale D. Kepford	Laura J. Kateley and Karl Klingbeil	Susan Kroll and Edward O'Neill	Mr. and Mrs. Richard W. Larson
Mr. and Mrs. Jay Kern	Mr. and Mrs. Arnold Kluge	Maggie and Jason Kromm	Mr. and Mrs. Thomas A. Larson
Nancy and Derek Kerr	Mr. and Mrs. Richard H. Knapp	Delores Kronkowski	Tim and Donna Larson
Mr. and Mrs. William J. Kerscher, III	Aliana Knapp-Prasek	Kevin Kruger	Janice LaRue
Ms. Martha E. Kersey	Chris and Lynsa Knickerbocker	Glen and Rebecca Kruse	Ryan and Joanna Latimer
Mr. Robert E. Kersey	Christine Knight	Mr. and Mrs. Gerald Kruyf	Mr. and Mrs. James R. Latta
Mr. and Mrs. Francis J. Kestler, Jr.	Jeffrey Knight	James and Dena Kruzan	Mr. and Mrs. Stefan Lauterbach
Joe and Stacy Ketchum	Mr. Eric Knop	Meagan Krzywosinski	Brent and Debora Lavanway
Mr. and Mrs. Dale W. Keyes	Marcia Knopp DDS	Piper Krzywosinski	Mrs. Rudolf F. Laveran
Mr. and Mrs. Charles Keys	Mr. and Mrs. John Knoppe	Ms. Ruth Krzyzowski	Fern Law
Mr. and Mrs. Russell Kidd	Thomas Knox	Jim and Coletta Kudlack	Greg and Marie Law
Susan and Michael Kielb	Mrs. Ann Knutsen	Mr. and Mrs. Quinton L. Kuebler	Mr. John E. Lawrence
Thomas and Kerry Kievit	Bruce and Cameron Koch	Gwendolyn P. Kuehn	Curt Lawson
Mr. and Mrs. James Kight	Mr. and Mrs. Timothy Kochanny	Mr. Robert L. Kuehne	Darrell Lawson
Richard M. Warren and Tammey Kikta	Fran and Jim Kochensparger	Paul and Kitty Kuhlman	Kathy and Al Lawson
Jeremy and Mignon Weber Kilar	Jim and Ruth Kochensparger	Mrs. G. Thomas Kuhn	Mr. and Mrs. Peter Lawson
James and Nancy Kilbourne	Patrick and Carla Kociolek	Dr. and Mrs. Douglas A. Kuhn	Cathy and Bill Lawson
Marilyn Killian	Andy and Erika Koehler	Cathy Kunkel	Mr. Duane Eugene Lawton
Bill Killoran and Elizabeth Armbruster	Nancy Koehler and Frank Brown	Bill E. Kunst	Donald and Mary Kay Layman
Ms. Ellen V. Kilpatrick	Dr. and Mrs. Gary R. Koenemann	Ronald and Barbara Kurtz	Ms. Carol Lazier
Jay and Myra Kim	Mrs. Grace A. Koeppe	Sue and Kyle Kurtz	Harold and Lois Leach
Ms. Jill A. Kimble	Gary and Marian Koester	Mr. and Mrs. William S. Kurtz	Mr. and Mrs. Kenneth C. Leanin
Mrs. James P. King	Lynne Kogel	Patrick J. Kusiak	Dr. and Mrs. James Learner
Ms. Gena M. King	Sandy Kohn and Cilla Laula	John and Marcia Dunn Kyle	Donald Leary and Rebecca Fuhrman
Larry and Barb King	L. Achille and Maria Kokas	Mrs. William F. Labadie	Mrs. Linda Leavitt
William and Delores Kingsbury	Kim Kolb and Tom Jaenicke	Amanda Labarge	Dan and Mary Ledingham
Mrs. Robert Kinney	Chad and Amy Kooyer	Mark and Sarah LaBlance	Ms. Phyllis H. Ledyard
Robert and Shirlee Kipp	Mr. and Mrs. Roger Kopernik	H. Robert Labuda	Aron Lee
Gayle Kirby	Mr. and Mrs. Steven E. Kopitz	Margaret and Michael LaChapelle	Errol and Carol Lee
John and Beverley Kirby	John and Kelley Korch	Daniel and Sherrie Lafferty	Mr. and Mrs. Mark E. Lefanowicz
Kathy Kirby and Dr. Robert Davis	Christina and Andrew Korinda	Andrew and Christina LaFleur	R. Dale and Martha C. Lefever
Ms. Nell A. Kirby	Mr. Mark A. Korkus	Russell LaForte	Mr. and Mrs. Mark J. Lefevre
Michael and Christine Kirchner	Ms. Rosemary Kornacki	John and Allison LaFramboise	Kathleen Left
Mr. and Mrs. John Kirila	Mr. and Mrs. Steve Kornmeier	Glen M. LaFreniere	Tammy Legenza
Bjorn K. Kirkland	Robert and Susan Sharp Korte	Mark and Jacque LaFreniere	Mr. and Mrs. Christopher P. Legghio
Tom Kirvan	Ms. Sally Korth	Jean Paul and Sara Lagasse	Neil and Carolyn Leighton
Mrs. Patricia Kishigo	Korthase Flinn Insurance and Financial Services	Pamela Lagattuta	Lekander Family
Mr. and Mrs. Stewart C. Kissinger	Dr. and Mrs. Michael Koskus	Tom Lagerstrom and Mary Anne Griffin	Jim and Karin Leland
Kelly Jo Kitchen	Mr. and Mrs. Stephen P. Kost	Brian and Ginger Lake	Jeff and Liza Leland
Andrew and Debra Kiteley	Mr. Jack N. Koster	John and Diane Lake	Mr. and Mrs. Robert C. Leland, Jr.
Russ and Kathy Kittleson	Kevin Kovachevich	Stacy LaLonde	Rod Lemmer and Mary Foucard
Reed and Cheryl Kittredge	Sandra and Chester Kowal	Linda and John Lamb	Mr. and Mrs. Richard Lemon
Ralph and Sheryl Kittrell	Laura and David Kowalski	Lamberti Family	Mr. and Mrs. Harry E. Lenick
Chris and Tracy Klage	Mrs. Loretta Kowalski	Kathleen Lancour	Mr. and Mrs. Joseph Lepak
Dr. David and Anna Klammer	Mr. Gerald F. Koziol	Kim Lande	Tim LeQuier and Elena Coppola
	Luanne Kozma and Ellis Boal		Mrs. Lucy Lercel

Michael Lercel	Sid and Laura Lockhart	Mr. and Mrs. Kenneth L. MacDonald	Thomas and Beth Ann Marsh
Timothy J. and Roberta LeRoy	Lewis Lockwood	Ormond and Anne MacDougald	John and Joan Marshall
David and Cacia Lesh Family	Mrs. Shirley (Bourke) Lodewyk	Maureen and Doug MacDougall	John and Barbara Marshall
Vicki Lesh	Mrs. Loepke	Jim and Laurie Macintyre	John and Marcia Marshall
Mr. Joseph C. Leshock	Robert and Jean Long	Mrs. Carole Mack	Kate Marshall and Justin Rashid
Mr and Mrs. Jerry Lesperance	Robert J. and Jeanne Long	William R. MacKay and Family	Ms. Carol Martin
George and Margo Lesser	Jeffrey and Susan Long	Mr. and Mrs. Thomas P. Mackell	Mr. and Mrs. James K. Martin
Stephen and Karen Lett	Terry Long and Karen Graham	Stephen and Barbara MacKellar	Mr. and Mrs. James F. Martin
David and Genny Letts	Long Point Property Owners Assoc.	Mr. and Mrs. Fraser MacKenzie	Ted and Pam Martin
Mary B. Letts	Kathy and Bob Longendyke	Susan MacLeod	Mr. and Mrs. J. Howard Martindale
Ed and Beth Leuck	Joseph and Linda Longo	Jessie Madden	Rochelle Martinez
Mr. and Mrs. Larry Levengood	Linda Longworth	Mike and Dorothy Madden	Mr. and Mrs. Michael F. Martlock
Fred and Janis Braun-Levine	Mrs. Mary Joanne Loniewski	Mr. and Mrs. Richard J. Maddin	Larry and Susan Marvin
Dr. Neil Levitt	Richard Lord	James and Marilyn Maddox	Neil and Linda Marzella
Irving and Susan Levy	Michael and Stephanie Loria	Len and Rebecca Maendel	Robert A. Marzosa
Jack Levy	Mr. Lawrence Lossing and Ms. Ann Elston	Mr. and Mrs. Julian A. Magnus	Ann and Bill Mason
Mr. and Mrs. David E. Lewis	Peter and Sherlyn Loubert	Charles and Jill Magrum	Mr. Henry Mast
Melissa and Jim Lewis	Dr. and Mrs. Ben Lounsbury	Mrs. Elizabeth Mahoney	Mr. Richard T. Masters
Mr. and Mrs. John Lewis	Ms. Rosemary Lounsbury	Raymond and Mary Ann Maida	Jill Matchinski
The Lewis Family	John and Wendy Loupee	Ms. Susan C. Mailloux	Randy and Jeanette Mateer
Mr. and Mrs. Robert Lewis	Mr. Ron Lovasz	Ms. Barbara M. Maise	Mr. and Mrs. Richard Mathews
Thomas J. Lewis and Alison Hollister	Keith and Cheryl Love	Maithel Family	John and Courtney Mathy
David Leyrer	Mrs. Linda Love	Kim Makarewicz	Joseph and Della Matievich
Library of Michigan	Guy and Barb Lovelace	Mark and Judy Malan	Curt and Linda Matthews
Charles and Stephanie Licata	Mr. and Mrs. David Loving	Sheila and Brian Malesko	Glen and Diane Matthews
Nick and Lauren Liebler	John and Grace Lowell	Annette and Gary Malkus	Matthews Family
Mrs. Mary D. Liebner	Thomas and Kitty Lower	Sam and Mike Malleis	Larry and Sue Mattox
Ellen and Steve Liestenfeltz	Ms. Laurie Lowrance	Sheila Malleis	Carol Matyniak and Larry Holland
Mr. and Mrs. Hall B. Liles	John and Susan Loyd	Mr. and Mrs. Steven Mallett	Robert and Anne Matzka
Richard and Margaret Lindberg	Judy and John Lucas	Mr. and Mrs. A. Joseph Mallette	Daniel and Anita Mauro
James and Cathy Linden	Marty and Cheri Luchtefeld	Joseph and Nancy Malloure	Mr. and Mrs. Gregory Mavian
Jean Linderman	Jim Ludden	Daniel and Genevieve Maloney	Gary A. Maximiuk
Ralph and Linda Lindgren	Tom and Tina Ludington	Megan Manahan and Russell Hurford	Daniel and Gail May
Jean and Walt Lindsay	Kate Ludlow	Ms. Janet Mancinelli	Robert and Carol May
Mark and Nancy Lindsay	Ms. Susan Ludwig	John and Pauline Mandelaris	May Plumbing and Heating
Ms. Nancy K. Lindsay	Mr. Robert A. Luginbill	Richard and Carol Mandle	Mr. Douglas J. Mayer
Charles and Barbara Lindsey	Lume Petoskey	Mitch and Debbie Manley	Richard and Diane Mayer
Mr. and Mrs. Wayne T. Lindstrom	Ms. Lorraine Lund	Mitch and Debbie Manley	Mr. Bo Mayfield
Betty and Jim Line	Brita Lundberg and C. Robert Horsburgh, Jr.	Mr. and Mrs. Larry Mann	Mr. and Mrs. Bill Mayhew
Richard and Carolyn Lineback	Tim Lundin	The Terry and Pam Manning Family	Laurie Mayhew and Morgan Coyne
Dr. and Mrs. Thomas G. Ling	Mr. and Mrs. Richard R. Lundstrom	Ms. Susan Mansfield	Olivia Maynard
The Linkous Family	Rob and Dana Luscombe	Doug and Rachel Mantha	Mary Ellen Mazurek
Douglas and Susan Linn	Michele DeVoe Lussky	Mr. and Mrs. Lawrence Marantette, Sr.	Mac and Diane McAlpin
Ms. Rita Linn	Michael and Suzanne Lutz	Paul and Christy Marazzo	Tim and Debbie McAndrew
The Rev. Dr. Daniel M. Linnenberg	Jamie Lutz	Ms. Stephanie Marchbanks	David and Joy McBride
Patrick Linton and Jean Brown	W. Frank and Nicky Luxton	Sue Marcrellis	Kirk and Judy McBride
Mark and Becky Lipchik	Daniel and Barbara Lynch	Mr. Steven L. Marcum	Robert and Elizabeth McBride
Greg Lipe	Col. and Mrs. Daniel J. Lynch	Mr. and Mrs. Anthony R. Marino	Mr. and Mrs. Richard C. McBrien
Jim and Jib Liska	James and Laura Lynch	Stacy and David Markel	Mr. John McCahan
Dan and Janet Lisonbee	Jill Lynch	Mr. and Mrs. Dennis Marker	David McCardel
John and Marjorie List	Mr. John J. Lynch, III	Ms. Jennifer C. Markey	Joseph and Barbara McCargar
Dianne Litzenburger	Jack and Vickie Lyon	Dr. and Mrs. Kevin Markham	Mr. and Mrs. Joseph D. McCarthy, Jr.
Tom and Fran Litzner	Julianne Lyons	Valerie and Paul Markland	Celia McCartney-Mundt
Sue Livingston and Ronald Zimmerman	Daniel and Kim Lytle	Clara and Ron Marks	Mr. and Mrs. Arthur McCaskey
Leslie and Kevin Lloyd	M & M Plumbing, Heating, Cooling	Paul and Denise Marr	John and Janine McClain
Scott and Kelly Locke	Mrs. Sue Mabee	Dr. G. C. Marsh	Lois A. McClaughry
Scott Lockhart	Mr. and Mrs. Sherman MacCready	Robert and Jill Marsh	Mr. and Mrs. Franklin McClelland
			Mary McClelland
			Gordon and Coleen McClive

John and Meg McClorey	Tom and Claudia McKee	Cindy McSurely and Patrick Faylor	Mr. and Mrs. David I. Meyer
Mr. and Mrs. Charles McCord	Barbara McKenna	Lori and Gene McSweeney	John and Diana Meyer
Mr. and Mrs. David McCormick	Michael McKenna	Mr. James T. McTaggart	Dr. Judith L. Meyer
Bill and Nancy McCormick	Mr. and Mrs. Charles McKinley	Robert McTaggart	Marcia Meyer
Mike and Lisa McCully	Mr. and Mrs. F. Phillip McKinley	Mr. David B. McVicker	Meyer Ace Hardware
Bill McCune	Mrs. John B. McKinney	Ms. Deborah Meade	Joshua and Mary Jean Meyerson
Mr. and Mrs. Michael J. McDaniel	Todd and Becky McKinney	Richard Meeker	Valerie Meyerson
Anne L. McDevitt	Mr. and Mrs. James McKinnon	Dr. William L. Meengs	Ms. Charlene T. Michael
Elaine McDonald and Steve Hall	Ms. Kay McKnight	Mr. and Mrs. Derek Meier	Charlotte Asbury
Mike and Lisa McDonnell	Dr. Tony and Melissa McLain	Elizabeth Meier and Chris Geerer	Timothy J and Dorothy Michiels
Sarah McDonnell	McLean and Eakin Booksellers	Mrs. George E. Melzow	Michigan Scientific Corporation
Kevin and Theresa McDonough	Grant McLean	Connie Mendyk	Robert Mida
Larry and Kay McDonough	Mr. and Mrs. Neil A. McLean	David and Kelli Mengebier	David and Carla Middaugh
Mrs. Thea McDougal	William and Diane McLean	William Merchant	The Miehls Family
Mr. Scott R. McDuffee	Mark and Karen McMahan	Nancy Merle	Mrs. Anne Mierendorf
Mr. Richard McEvoy	Brendan and Deborah McMahan	Frank Merlino	Sue Mieske
Timothy and Lynne McGarry	Michael and Karen McMahon	Katherine Merrell	Dennis and Eileen Mikus
Mrs. Ellen McGill	Fred and Dolly McMaster	Mr. and Mrs. Harold A. Merten, Jr.	Ms. Anna B. Milburn
Mr. Tom McGill	Dr. and Mrs. Mark R. McMurray	Drs. James and Andrea Mertz	Ms. Mary E. Miles
Mr. Patrick McGorisk	Mrs. Francoise McMurtrie	Mr. and Mrs. Michael L. Mesmer	Drs. William and Jane Millar
Karen and Courtney McGovern	Jacqueline McMurtrie	Mr. and Mrs. Greg Messacar	Mr. and Mrs. Phillip H. Millard
Mike and Ruth McGrath	Mr. Thomas J. McNall	Kyle Messinger	Craig and Julie Miller
Debbie McGuinness	Mike McNamara	Mrs. F. Michael Messner	Mr. and Mrs. David T. Miller
Joseph C. McGuinness and Family	Mr. and Mrs. John R. McNaughton, III	David and Gail Mester	Mr. and Mrs. George R. Miller
Mr. James T. McHugh	Dr. Kim and Cindy McPheeters	Dr. Robert Metzger	Ginger Miller
Ms. Ann C. McInnis	Gregory and Tina McPherson	Mr. and Mrs. Allan J. Meyer	Mr. and Mrs. James L. Miller
Mr. and Mrs. John J. McIntosh	Gayle and Mike McPhilamy	Carin Meyer	Jeffrey and Beth Miller
Mrs. James McIntyre	Mr. Thomas McQueary	Carl and Diane Meyer	Jess and Pam Miller
Francie and Rod McKay		Mr. and Mrs. Dale E. Meyer	Marianne Miller



YES Summer Program, Exploring the Pigeon at the Agnes S. Andreae Nature Preserve.

Ms. Linda Miller	Mr. and Mrs. Richard Moore	Colin and Alexis Murray	Geoffrey Niespolo
Mrs. Louisa Miller	Mr. and Mrs. Richard E. Moore	Mr. and Mrs. David Murray	Karen Nigg and William J. Lorne
Midge Miller	Roger and Kelli Moore	Lawrence Murray	Mr. and Mrs. Marc E. Nigg
Mark and Gail Miller	Shirley and Gary Moore	Susan Murray and Jamie Matus	Robert and Debra Nikolas
Bo and Carol Miller	Tom and Sheila Moore	Ruth Music	Mr. Clas Nilstoft
Ms. Susan Miller	Trey and Amanda Moore	Ryan Musser	Richard and Susan Nisbett
Mr. and Mrs. Thomas D. Miller	Moore Family Properties, LLC	Peggy Cameron Muzzall	Mr. and Mrs. Mark A. Noffsinger
Timothy Miller	Jeffrey Moore and Mari Anne	Mr. Eric R. Myers	Melissa and EJ Nogaski
Amy Miller	Guidobono	Phil and Lora Myers	Mr. Brian Nolan
Kathy and Steve Miller	Ernest and Staci Moosherr	Tom and Laurie Myers	Daniel and Jennifer Nolan
Dr. and Mrs. James Milliken	Dr. and Mrs. Lawrence Morawa	Jane P. Mykrantz	Jennifer and Mike Nolan
John R. and Lynn Mills	Morell Family	Deb and Joe Nachtrab	Joyce Hutto-Nolan
Mike and Linda Mills	Mr. Jerald Morgan	Thad and Rachelle Naquin	Mrs. Patricia Nolan
Robert and Mary Milne	Ms. Patricia Morgan	George and Susie Neal	Nolan Family
Greg and Mimi Milward	Frank and Ann Morgan	Matthew Neddo	Robert and Linda Noll
John and Luanne Milward	Chris and Liisa Morley	Michael and Constance Needles	Amanda Norcross and Stuart Brody
Mr. and Mrs. Larry G. Minch	Marshall and Jan Morley	Mr. and Mrs. Thomas W. Neelands	Rick North and Phil Day
Colleen Sherburne and Ed Miner	Al and Danielle Morris	Thomas and Deb Neidhamer	Mr. Thomas B. North
Eric Mink	Charles Morris	John and Sharon Neighbours	Mr. and Mrs. William V. North
Minkin Family Foundation	Mr. and Mrs. James W. Morris	Mr. Owen Neils	North by Nature Landscaping
Margaret and William Minnich	Jeffrey and Angela Morris	Stuart and Amber Neils	Michael and Wendy Norton
Ginger Child Minoletti	Dawn and Ken Morris	Geoffrey and Constance Neithercut	Mrs. George Notarianni
Rick and Debra Mishler	Lisa and William Morris	Peter and Susan Neithercut	Sandra A. Novacek
Richard and Colleen Misiak	Mr. Scot Morrison	Susan Neitlich and Matthew	Mr. Edward F. Novak
Daniel Miskowicz and Nicole	Gary and Teresa Morse	Broder	Mr. and Mrs. Thomas Novak
Mellinger	Mr. and Mrs. William A. Mosher	Burton Nelson	Mr. and Mrs. Michael L. Nuorala
Kimberlee Mitchell and Ralph	Mrs. Stan Mosier	Dale and Dawn Nelson	Bruce and Katherine Nyberg
Williamsons	Moskal Family	Mr. Elliot Nelson	Mr. George Nyman
Mr. and Mrs. Michael S. Mitchell	Steven and Patti Ann Moskwa	Mrs. Harold E. Nelson	Nancy Nyquist and Mike Blohm
Mr. and Mrs. William S. Mitchell	Peter and Camille Moss	Perry Nelson and Clare Sullivan	Kenneth Nysson and Carol
Mr. and Mrs. Donald W. Mittlestat	Mr. and Mrs. Sidney I. Moss	Mr. and Mrs. Philip E. Nelson	Hennessy
Mr. Harold Modeen	Kathy Motschall	Jackie, John and Chris Nelson	Mr. and Mrs. Donald A. O'Brien
Frank and Roslyn Modetz	Gregg and Amy Motter	Lathrop B. Nelson, Jr.	Patrick and Jane O'Brien
Peter and Moira Moede	Norman Mottl and Marla	Charles L. and Kathleen Nemes	Patrick O'Brien
Ellen Moeller	Houghteling	Jack and Kathleen Nestell	Paul and Ruth O'Brien
Mr. and Mrs. John W. Moeller	David and Jan Motz	Mr. and Mrs. Franz Neubrecht	Trina Ochs
Ashley Moerke	Mr. Thomas A. Mough	Meredith and Rick Neumann	Roberta O'Connor
Pete and Carrie Mogavero	Pamela and David Moyer	Daniel and Patricia Neumeyer	Robert and Roxanne O'Dell
Timothy Moher	Judy and Jeff Moyer	Heather Nevin	Mr. John F. O'Donnell
Kenneth and Deborah Mohre, Jr.	Mr. and Mrs. David A. Mueller	Dawn and Cliff Newbury	Jim and Karen Odorizzi
Marie Molnar	Dustin and Julia Mueller	Dr. and Mrs. Edward E. Newcomb	Thomas and Linda Oelke
Donald and Elizabeth Molosky	Mr. and Mrs. Richard Mueller	Mr. and Mrs. Mark A. Newman	Robert and Connie Offenhauser
Drs. Bob and Kimberly Molter	Rob and Liz Mueller	Phil and Claire Newman	Karin Offield
Kristin Monan	Ruth Mueller	Mr. Phillip B. Newman, III	Mr. and Mrs. John Ogden
Monarch Garden & Floral Design	Scott and Barbara Muhlhauser	William and Mary Anne Newman	W. Baldwin Ogden
Michael and Gretchen Monette	Fred Mulhauser and Paula Welmers	Ron and Lue Newmann	Mr. and Mrs. Thomas G. O'Hare
Mr. and Mrs. Patrick Monette	Patrick and Alissa Mullally	Kelley Newton	Mr. and Mrs. Grant Ohlson, III
Jeffrey Mono	Ms. Michael Ann Mullen	Paul and Annmarie Nibbio	Dr. and Mrs. Bruce Ohmart
Mr. and Mrs. David C. Monroe	Muller Electric Company	Mr. and Mrs. Charles H. Nicholl	Mr. and Mrs. Hank Ohnmeis
Ben and Zory Monshor	Ms. Nancy Mullett	Anna Petzold Nichols	Ms. Karen O'Keefe
Annie and Marty Montagne	Karen and Jerry Mulligan	Jon and Diane Nichols	Patrick and Carol O'Keefe
Mr. and Mrs. Scott Monthei	Mr. and Mrs. Lawton Mullin	Ms. Maureen Nicholson	Chad and Sue Okuly
Mr. and Mrs. Douglas L. Moore	Karen Mundus	Steven and Jacqueline Nickol	Old Homestead Homeowners
Geoffrey and Deborah Moore	Jerry and Marianne Mundy	Barbara A. Menear Nickola	Association
James and Diane Moore	Mrs. Dave Munger	Mr. and Mrs. George Nickson	Robert and Virginia Oldt
Mr. and Mrs. Joel Moore	Ms. Deborah G. Munn	Ms. Lisa Nicol	Mrs. Karen Olmstead
Mrs. Joyce Moore	Mrs. Marlene S. Murphy	Mr. and Mrs. James Nield	Christine Olson
Marilyn Moore and Jim Burks	Sarah Murphy	Mr. and Mrs. Bendt C. Nielsen	Mr. and Mrs. Joseph H. Olson
MaryAnn Moore	Ms. Sheila M. Murphy	Ms. Beth A. Nieman	Mr. and Mrs. Ronald E. Olson, Jr.

Stefan and Elizabeth Olson	Mr. and Mrs. Lee H. Parrish	Ms. Christina Petry	Mrs. Ann Povenz
Carmen Olszewski and Brigitte Olszewski	Larry and Marnie Parrott	Robin Pettersen	Lori Powe
Pat and Dennis O'Neill	John and Kris Parrottino	Ms. Judith Marie Pettijohn	Mr. and Mrs. William A. Powel, III
Mr. and Mrs. Joseph O'Neill	Dale Parsons	Thomas and Julia Pettus	David and Kay Powell
Kevin O'Neill	Mrs. Bayard Paschall, III	Thomas and Kathryn Petz, Jr.	Mark Powers and Mary Hotchkiss
Marty O'Neill	Hannah Paschall	Tom and Jeanne Petzold	Mr. Michael Powers
Anne and Cole Oosthuizen	Pateman Chiropractic Center	Lucie and Rob Peven	Karen and Wayne Pratt
Jennifer Operhall	Petoskey	Barbara Pfeil	Kevin and Dee Prediger
Shaun and Jennifer Opie	Ms. Alison Paton	Maryann Phillippi and James Smar	Robert and Sally Pregitzer
Jill Ore	Joyce Paton	Barbara Phillips	Hallie and John Prescott
Mr. and Mrs. Michael O'Rear	Mr. Peter Patrick	Cindy and Wayne Phillips	Preston Feather Building Centers
Ms. Martha J. Orloff	Robert and Alice Pattengale	Ms. Elizabeth Difanis Phillips	R. Douglas and Susan Pretty
Ms. Cynthia J. O'Rourke	Patrick C and Nan Patterson	Margie Phillips	Richard and Amy Price
Mr. William R. Orr	Mr. and Mrs. David H. Paul	Ms. Sandy Phillips	Eric and Kelley Priebe
Sybil Ortego	Butch and Shelley Paulsen	Tony and Carol Piazza	Donald and Marjory Priest
Don and Dolly Osborne	Mr. and Mrs. John D. Paulus	Pickerel Lake Association	Mrs. Norman E. Probert
Beverly and James Osetek	Bill and Karen Pawlick	John and Anneke Pickering	Peter and Mary Lynn Prokop
Mr. Gary Osterbeck	James and Carol Pawlusiak	John and Rita Picton	Mrs. Elizabeth E. Proulx
William and Marsha Ostler	Mrs. Elizabeth and Mr. Morton Payne	Ms. Beth Piehl	Puerner Family
Andrew and Lauren Ostosh	Mr. and Mrs. John Roy Peak, III	Ms. Cynthia Piehler	Mr. H. Roy Pulaski
Chuck Otis and Jeff Reider	David and Judith Pearce	Eric and Julie Pierpont	Mr. and Mrs. Robert Pulte
Mr. and Mrs. David D. Otis	James and Lorraine Peck	Ron and Pat Pigott	Dan Pulver
Double O Development	Mr. James Pedersen	Mr. and Mrs. Ed Pike	William and Linda Purdy
Mrs. Cynthia Ottaway	Mr. Jim Peery	Marijean Pike	Robert J. and Sheryl Pursel, Jr.
John C Ottimer	Chelsea Simms and George Peet	Mr. and Mrs. George N. Pike	Mr. and Mrs. Max R. Putters
David and Linda Overberg	Nick and Deb Pellegrini	Mr. and Mrs. Paul E. Pillsbury	Mr. and Mrs. Charles Puttkammer
Ed and Mary Jane Overmyer	James and Mollie Pelon	Mr. and Mrs. Tom Pink	Owen Pyle
Pace Interior Design	Mr. and Mrs. Michael W. Pemberton	Claire and Joe Pinkerton	Dr. and Mrs. Joseph J. Pysh
Dr. and Mrs. Ronald V. Pacheco	Jennifer and Ken Pendery	Robert Piotraczk	Mrs. James M. Quinlan
Mark and Wendy Smith Pachla	Mr. and Mrs. Tom Pendery	Mr. Chip Piper	Mr. and Mrs. Fred Rachwitz
Jim and Alice Padilla	David and Carolyn Penniman	Cally Pirrung	James and Holly Rader
Jim Page	Phillip and Carrie Pennington	Mr. and Mrs. Timothy B. Pirrung	Tim Radigan
Leonard and Susan Page	Andrea J Pepper	Emily Pittman	Maureen Radke and Rick Brandi
Nancy Paige	Veronica Pepper	Nita Pitts	Mr. and Mrs. H. N. Ragland, III
Richard Pakizer	Mr. and Mrs. Jim Perkins	Mrs. Sandra Planisek	Karen L Ragland
James and Kimberly Palmer	Dr. Owen Z. Perlman	Mr. and Mrs. Richard B. Platt	Ms. Rhoda Raider
Lynette and Chris Palmer	John Perreault and Robin Ferguson	Peter and Chelsea Platte	Eric and Theresa Raikko
Dr. Krissy Palo	Mr. and Mrs. James Kirk Perrin	Mr. and Mrs. Edward Plawecki, Jr.	Carol A. Raitzer
Mitchell and Karen Pandos	Mr. Mark and Mrs. Anne Perry	Pleasantview Properties, LLC	David Ramon
Janet Pankey	James and Janice Petcoff	Larry and Carol Pliska	Brenda Ramsby
Kathy and Tom Paonessa	Mary Peterman	Skip and Susan Pluhar	Dana L. Randall
Donald and Martha Papke, Jr.	Cyndi Peters	Keith and Laura Podob	Mr. and Mrs. David M. Randall
Tracy Paquin and Susan McDermott	Mr. and Mrs. Don Peters	John and Julie Podulka	Mrs. David R. Randall
Jim and Frances Paris	Ms. Mary Lou Peters	Mr. Richard Pohrt	Bruce and Carol Randels
Ken and Sandy Parish	Drs. Michael and Van-Anh Peters	Lois Polatnick and Fred Geisler	Don Ransom
Mike Parish	Barry and Carol Petersen	Mark and Karen Pollard	Jeff and Martha Raphelson
Mrs. Gerald L. Park	Bart and Amy Peterson	Lou Pollie	Mr. and Mrs. Anthony Rasch
Mrs. Janet Parker	Eric R. Peterson	Polly's Planting and Plucking	Tom and Claire Rasmussen
Mr. and Mrs. John H. Parker	Mr. Erik L. Peterson	Thomas and Melissa Roche Polzin	Kate McVicker and Eric Rasmussen
Katie Parker and Bert Ebbers	Esther Peterson	Mrs. and Mr. Pomish	John and Barbara Rasmussen
Parker Family	Madeleine Peterson	Ken and Sue Poniatowski	Rasmussen, Teller & Caron, PC
Michael and Wellesley Parker	Mr. and Mrs. Mark L. Peterson	Marc and Shanley Poole	Ty and Sarah Ratliff
Ted and Vicki Parker	Tom and Kelly Petitto	Nancy and Jeff Porter	Raymond and Louise Rau
Tom and Margie Parker	Petoskey Area Garden Club	Leman and Emily Porter	Mr. and Mrs. Louis L. Rauh
Barry Parkinson	Petoskey Outboard Cruising Club	Phil and Valerie Porter	Mr. Scott R. Rausch
Frank and Jan Parkinson	Petoskey Pretzel Co.	Mr. and Mrs. Richard W. Post	Raven Hill Discovery Center
Michael and Sue Parr	Mr. and Mrs. Edmund Petray	Mrs. Thomas J. Postelnick	Bryan and Kathy Ray
Mr. and Mrs. Angelo Parrish	Bob and Karen Petrie	Ms. Deborah Potter	Mr. and Mrs. James D. Ray
		Bill and Karen Poulos	Scott Rea

Dr. and Mrs. Thomas J. Rea
Jeff Read
Patrick and Theresa Reade
Tige and Colleen Reader
Mr. and Mrs. Robert L. Recchia
Dr. and Mrs. Raymond Reck
Kim Redic and James Eder
Sarah and Wil Reding
Dr. and Mrs. Paul W. Reed
Ms. Sherri Reed and Mrs. Lisa Reed
Stephanie and Gregory Reed
Bill and Suzanne Reed
Libby Reeg
Dan and Jan Reelitz
Mr. and Mrs. John E. Regan
Michael and Bridget Regan
Steve and Margie Reh
Myles and Sally Rehkopf
Bill and Linda Rehor
Mr. and Mrs. Eric P. Reif
Sharon Reinke
Mr. and Mrs. James Remensnyder
Glenn and Martha Remus
Mr. G. Bentley Renker
Mr. and Mrs. Greg Renker
Mr. Melvin Rennaker
Rick and Sylvia Rennie
Mrs. Barbara Renton
Mr. and Mrs. Gary Rentrop
Molly Resnik and John Martin
Mr. John Rethman
Dr. and Mrs. Arthur C. Rettig
Brian and Lynn Reuter
Ms. Judy Revallo

Curt and Robin Reynolds
Jennifer and Geoffrey Reynolds
John and Elizabeth Reynolds
Nadji and Oakley Reynolds
Mr. and Mrs. Sherman F. Reynolds
Ms. Susan Reynolds
Mr. and Mrs. Robert J. Rhein, Jr.
Ms. Kelly S. Rhodes
Mr. John Rich
Denise and Tom Richards
Dr. and Mrs. Tad J. Richards
Mr. and Mrs. Oliver Richards
Mr. and Mrs. Ernie Richardson
Mr. and Mrs. James 'Mac' M.
Richardson
Mr. and Mrs. John M. Richardson
Martha and Jerry Richardson
Mrs. Wendy Richardville
Dr. and Mrs. Mark Richmond
Kevin and Nancy Rickard
Jeff and Kim Ridings
James and Linda Ries
Kirsten Ries
Robert and Mary Ann Riley
Rock and Nancy Ringold
Gerald and Pat Rintamaki
Christopher and Sarah Riopelle
Mr. and Mrs. Stuart Risby
Michael and Kate Rise
Ron and Mindy Risher
Fox and David Ritchay
Stephen and Judith Ritter
Barbara Rivard
Clarence and Sara Rivette

Rocky Roberson
Mrs. Ada Sue Roberts
Mrs. Irene Roberts
Josephine and Justin Roberts
Michael Roberts
Randy and Carol Roberts
Margo Robeson
Alise and Shamus Robinson
Ben and Joanne Robinson
Mr. and Mrs. Bradford R. Robinson
Kathleen Robinson
David and Peggy Robison
David J. Rocco
John and Linda Rockaway
Rocking Horse Toy Company
James S. and Jane Rodgers
Janet and Gary Roeckner
Carl and Barb Roehling
Mrs. David Roellig
David and Linda Roeser
Bill Rogers
John and Karen Rogers
Elizabeth and Patrick Rogers
Adrian and Sharon Rogier
William and Cynthia Rohde
John F. and Deborah J. Rohe
Mrs. Tom Rohlen
Mr. and Mrs. John H. Rohrbeck
Ms. Barbara Rohs
Robert and Marilyn Roll
The Romano Family
Dr. and Mrs. Franklin D. Ronan
Paul Rondell
Ms. Carol Roney

Kay Root
Mr. and Mrs. Thomas Root
Dr. Jay T. Rorick, Jr.
Rocky and Amy Rosacker
Ms. Sara Rose
Jean and Stu Rose
Ellen and Michael Rosewall
Mr. and Mrs. Daniel C. Ross
John and Monica Ross
Kasey Caye Ross
Lisa Lynne Ross
Robert and Suzanne Ross
Mrs. Walter L. Ross, II
Mr. David J. Rossman
Jim and Pam Rossman
Steve and Lynda Rothman
Dennis and Pam Roudi
Katie Roudi and Steve Burggraaf
David and Nancy Roush
Ron and Mary Roush
William and Rosalie Roush
Brenda and Tom Routhieaux
Dr. Bradford Rowe
Jackie and John Rowe
Pat Rowe
Ryan Roxbury
Marilyn Morehead and John Royal
Mr. and Mrs. Stan Royalty
Mary Belle Royer
Roznowski Family
Kenneth Rudman
Thomas and Donna Rudy
Mrs. Sandra E. Ruffini
Gary and Kathy Rummel



Kayaking Community Field Trip at the St. Clair Lake / Six-Mile Lake Nature Preserve.

Jim Rummer	James Schlappi and Lorie DeGrazia	Ms. Cheryl Sedestrom	Ann and David Shneider
Lee and Maria Runk	Rex and Janice Schlaybaugh	Howard and Pamela Seeburger	Roger and Janet Shoemaker
Dan and Kathy Rupp	Susie Schlehuber	Seedums Garden Club	The Joseph Shore Family
Mark and Mary Ann Rusch	Tim and Carol Schley	Paul and Debra Seehaver	Mr. James C. Shrader
Patricia Rushlow and Jeri Sherman	Philip and Carie Schlink	Frederic Sejalon	Mr. James L. Shrier, Jr.
Ed and Phyllis Rusk	Charles and Susan Schloff	Ms. Beth Selke	Michael and Suzanne Shumway
Jeff and Cathy Russel	Susie Davenport and Nathan Schloff	Mr. and Mrs. Robert B. Sellers	Shure Incorporated
Holly Russell	Sarah Schloff	Tom and Laurie Seltenright	John and Mary Sue Siciliano
Mrs. Phyllis Russell	Stacey Schlueter	Elisa Seltzer and Steven Johnston	Mary Sienkiewicz
William and Janet Russell	Mike and Sara Schmidt	Douglas and Shannon Selvius	Mr. and Mrs. Steven Sikkema
Cynthia M. Russell	Mr. and Mrs. Richard J. Schmidt	Norm and Stacy Sandler	Michael and Jade Ann Silverman
Aaron and Sarah Rustad	Thomas and Jeanne Schmidt	Mr. and Mrs. James Sergeson	Mrs. Dorothy Simon
Ms. Bernice Rutecki	F. J. and Laurel Schmiede	Ms. Margaret Seroppian	Lisa Simon
Daniel and Mary Ann Ryan	Ms. Carol Schmier	Molly and Mike Servais	Scott and Laurie Simons
Mr. and Mrs. Philip C. Ryan	Ellen Schmier and Sally Soverinsky	Robert and Becky Sevener	Mr. and Mrs. Thomas A. Simons, Jr.
Ryde Marine	David and Nancy Schmitz	Doug Severson and Miriam	Michael and Maria Simonte
Ms. Rebecca L. Rynbrandt	Mr. Thomas W. Schmucker	Geraghty	Dave and Corinne Simpson
Mrs. William D. Saal	Bill and Lisa Schneider	Mark and Nicole Seymour	Don and Rhonda Simpson
Paul and Karen Sabatine	Robin and Fred Schneider	Rand Shackleton and Laura	Shawn Sinacola
Mr. and Mrs. Merle K. Sackman	Ms. Jane E. Schneider	Chaney	Mark and Ann Sinclair
Andrew and Jo Sahara	Dr. Harold and Katrina Schock	Cynthia C Shafer	Mr. and Mrs. Garry M. Singel
Nicola and Jennell Salciccioli	Dr. Franziska Schoenfeld	Annette Shaffer and Don Tinson, II	Shirley and Stew SirLouis
Luis and Elizabeth Saldivia	Mr. and Mrs. E. Jeffrey Schoeny	Robert and Ann Shaffer	Sharon Sisskind and Arthur
William and Diane Saltarelli	John Scholl	Mr. Joe Shaheen	Anderson
Daniel and Sandra Sampson	Stefan and Kim Scholl	Ms. Cheryl J Shanahan	Site Planning Development, Inc.
John and Suzette Sanborn	Kathy and Gary Scholnick	Mrs. N. Kim Shanahan	Mr. and Mrs. Jerome I. Sitner
Walter Sandercott	Brian and Mary Scholtens	Mo Shannon and David Vaughn	Dan Siwulec
Trish and Van Sandstrom	Col. and Mrs. Joseph C. Schott	Mrs. Audrey L. Shapiro	Mr. and Mrs. Roy H. Sjoberg
Mr. and Mrs. Louis Sanford	Mr. and Mrs. Robert Schrader	Wil Shapton	Mr. and Mrs. David C. Skaggs
Daniel and Pamela Sanquist	Dr. and Mrs. Robert D. Schrock, Jr.	Linda Sue Sharabba	Julie and Mike Skelton
Mr. and Mrs. John Santeiu, Jr.	Matthew and Sheri Schroeder	John and Cindy Sharp	Ronald Skelton
Michael and Jane Santi	Adam and Stephanie Schubel	Mr. and Mrs. George A. Sharpe	Dave and Lynn Skornia
Frances Santoro and Paul Revard	Cathryn J. Schuil	Trisha and Marcia Shattuck	Suzanne Skubick
Kelley A Sarafa	Mr. and Mrs. Hans Schuler	Mr. and Mrs. Andrew Shaw	Ada Skyles and Kent Wilcox
Mr. and Mrs. Richard N. Sarns	Mrs. Jack Schulman	Ken Shaw	Danny and Lauren Slanec
Thomas and Nancy Sarowski	Patrick and Susan Schulte	Caroline J. Smith Sheaffer	Mr. Michael Slater
Tony and Holly Sasso	Henry and Brenda Schultz	Nancy and Bud Shear	Karie Slavik
Randy and Christen Satchwell	Steve and Mary Jo Schultz	Dr. and Mrs. Charles Shearer	Mrs. Jerome Slebiska
Neil and Joni Satovsky	Michael and Jacqueline Schultz	Mr. Michael D. Sheean	Ms. Sharon F. Slipek
Mr. Robert Saunders	George and Mary Jane Schuster	Mrs. Thomas Sheeran	Mr. Rod Slocum
Dan and Rene' Savage	Joanne Schutz	Mr. and Mrs. Gale Sheldon	Mr. Clyde L. Slutz
Mr. and Mrs. Robert Savage	Dave and Liz Schwab	Dave Shellenberger	William Slutz and Linda Roomann
Greg and Cathy Sawyer	Chris and Robin Schweizer	Mrs. Patricia A. Shelp	Ms. Ruth E. Smelser
Joe and Jane Sayed	Mr. and Mrs. Frederick Schwier	Robert and Janet Shelton	Michael and Carol Smelt
Mr. Rob Scarrow	David and Beth Scinta	Bill Shelton	Al and Joan Smith
Chuck Schafer	Ms. Jan Scislowicz	Mr. Lawrence S. Shepard	Amy Smith
Kevin and Shelly Schalk	Mr. James B. Scodellaro	Mr. and Mrs. Christopher Shepler	Andrew Smith and Jamie Cochran-
Tracy Schall	James and Ann Scott	Nancy Sheppard and Peter	Smith
Ms. Claudia Schan	Mr. and Mrs. John R. Scott	Poullada	Mr. Bob W. Smith
David and Sharon Schantz	Richard A. and Julie R. Scott	Ms. Mary Ellen Sheridan	Mr. and Mrs. Carlin Smith
Robert and Hope Schaumann	Mr. and Mrs. Russell A. Scott	Ken Sherlock	Mr. and Mrs. Tom Smith
Anne Ewing Scheele	Steven Brochhagen and Susan Scott	Mrs. Robert Sherman	Christopher Smith and Emily Fleury
Robert and Paula Schenck	Robert Scroggins	Myke and Cathy Sherman	Clark and Sally Smith
Mr. Randolph B Schiffer	Chris and Lora Searles	Patti Sherman	Annie Carrott and Collyer Smith
Mark and Tamara Schirmer	Michael M. and Debra Sears	Mr. and Mrs. Peter F. Shields	Deborah Smith and Daniel Buday
Mr. Michael H. Schirmer	Mr. Edward Flint Seaton and Ms.	Derek and Adrienne Shiels	Denise Smith and Bruce Seyburn
Mr. Sandy Schirmer	Lynn Janeczek	Paul and Roberta Shiels	Sandy Smith
Anna Schirtzinger	Mr. and Mrs. James J. Secor, III	Matthew Shindorf	Gavin Smith and Mary Mertz-Smith
Ms. Kathryn Schirtzinger	Mrs. Lois Brumleve Sedacca	Kent and Diane Shirley	Gregory B. and Pamela K. Smith

James and Kathleen Smith	Ryan and Michelle Spies	Mr. and Mrs. Michael Stoll	Carolyn Swift
Mrs. Joan M. Smith	David Spieser	Don and Julie Stolt	Jerry and Donna Swift
Julie Ann Smith	Mr. and Mrs. Steven Splan	Harry and Tineke Stolt	Mr. and Mrs. Stewart G. Swift
Kelley and Molly Smith	Mrs. Donald Spray	Paul and Karen Stolt	Mrs. Gregory K. Swinford
Kerri Smith	Dr. and Mrs. Douglas J. Springborn	Donn Stone	Mark and Tammy Switow
Mark and Christine Smith	Duane and Theresa Spytman	William and Jane Stone	Rick and Maryanne, Linda and Tom, Jo and Fred
Jean and Michael Smith	Mr. and Mrs. Larry Sroka	Clifford and Lucia Storr	Craig and Judy Taggart
Michele Smith and Dennis Sheridan	Andrew and Susan Stackhouse	Mr. and Mrs. Charles M. Story	Deborah R. Taggart
Mrs. Melvyn L. Smith	Joe and Joan Stafford	Ms. Olga Stott	Makram and Jane Talia
Jay and Peggy Smith	Stafford's Hospitality	Mr. and Mrs. R. M. Stout, Jr.	Heather and Joshua Tallis
Mr. and Mrs. Robert A. Smith	William and Rebecca Stalder	Hilary Stover	Marianne and Larry Talon
Robert and Marilyn Smith	Teresa Staley	Jeffrey Stover	Robert G. Tambellini
Mr. and Mrs. Ronald N. Smith	Andris and Makiko Staltmanis	Peter and Jenny Strang	Richard and Irene Tanghe
Rev. and Mrs. Russell Smith	George and Mary Stancel	Scott and Jayne Ann Stratmeyer	David and Patty Tank
Mr. and Mrs. Scott Smith	Kendall P. and Diana D. Stanley	Christopher Straus	Colin Taylor
Solomon and Deborah Smith	Wally Stansbury	Mrs. Lorna Straus	Dan and Janet Taylor
Stafford and Janice Smith	Kenneth and Margaret Stapleton	Gary and Mary Street	Duane and Pat Taylor
Stan and Marilyn Smith	John and Ginny Starkel	Mr. J. Kennard Streett	James and Susan Taylor
Stephen W. and Janice Smith	Susan and Jeff Stavenhagen	Elizabeth B. Streett	Teddy Griffin's Road House
Stephen and Joann Smith	Bob and Liz Stearns	Andy and Julie Strickland	Laura Teeple
Mr. and Mrs. Thomas N. Smith	Greg Stebbins	Jim and Scotty Strickland	Mr. and Mrs. Leighton Tegland, Jr.
Thomas A. and Lesley Smith	Thomas and Beverly Steckert	Mrs. Margaret C. Strickland	Rajan and Susan Telang
Mr. and Mrs. Watson C. Smith	Mark and Kimberly Stecko	Sean and Chelsea Stringer	Kristin Tennent
Mr. and Mrs. J. Thomas Smolarek	Kalleen Steele and Cameron Yeary	The Strojny Family	Mrs. Suzanne Ternan
Mrs. Joanne Snedden	David and Linda Steenstra	Mr. and Mrs. David Strong	Edward and Jane Terrill
Mr. Jacob Snider	Mrs. Margaret Stefanos	Ed Strzelinski	Mr. Alan F. Terry
Tom and Kathy Snow	Mr. and Mrs. Christopher J. Steffen	William and Lucy Stubbings	Jon and Kristen Terry
George and JoAnne Snyder	Mr. and Mrs. Evan E. Steger	Michael and Anita Studer	Tom and Marge Teske
Mike Snyder	Susan Stein	Mr. Rick Stuebing	Mr. and Mrs. John J. Teutsch
Robert and Sherrie Snyder	Timothy and Kelly Stein	Gilbert and Sally Stump	Ken and Brenda Tewel
Dr. and Mrs. Ronald D. Snyder	Dianne and Steve Steinglass	Ms. Suzanna K. Stump	Mr. and Mrs. Sydney Thayer
Ms. Shirley A. Snyder	Hugh and Gretchen Stelter	Mr. John G. Sulewski	Peter and Lisa Theut
Michael and Donna Sobier	Mr. Chad Stemple	Michael and Mary Jo Sullivan	Mike and Nancy Thibideau
Janice Soblesky	Mr. and Mrs. David Stepanovich	Patrick and Lois Sullivan	Mr. and Mrs. E. R. Thomas, Jr.
Robert and Ann Marie Sojka	Mrs. Deborah Stephens	Mrs. John Summers	Dr. and Mrs. Edward R. Thomas
Georgiana Richner and G.W. Solomon	Gale and Anne Stephens	Mike and Peggy Supernault	Mr. Robert F. Thomas
Dean R. and Frances Solomon	Dr. and Mrs. Robert L. Stephenson	Steve and Pam Surhigh	Rosalie Hooper Thomas
Ms. Lea Rene Soltis	Joan Sterling	Kermit and Jenny Sutton	William Thompson
Patti Lease and Pete Souza	Dr. and Mrs. Timothy R. Sterling	Stan and Jeri Sutton	David and Ruth Thompson
Debra Soverinsky and David Kraus	John and Kathy Sternfels	Dana Sutton-Myers	Diane E. Thompson
Don and Gloria Sowle	Mr. and Mrs. William J. Stevens	Roberta and Ron Svatora	Mr. and Mrs. John F. Thompson
Katie and Patrick Spalding	Mr. and Mrs. Robert Stevenson	Mr. and Mrs. Kenneth Swadling	John Ross Thompson and Ellen Brubaker
The Spang Family	Robert Jan and Mariellyn Stevenson	Mr. Joseph Swager	Mark and Mary Thompson
Mr. and Mrs. Jack R. Spanhak	Ellen Stewart	Susan Swan	Ms. Sandra K. Thompson
Lloyd and Rebecca H. Sparks	George and Jan Stewart	Mr. Andrew K. Swanson	Ed and Terri Thompson
Julie Sparling	Ms. Karen Stewart	Mr. Chris Swanson	Wilma Thoms
Ryan and Nicole Spayde	Ken and Jan Stewart	David Swanson	Jane and Hugh Thomson
Paige and Reid Spearin	Nancy Stewart	Douglas Swanson	Mr. Glen W. Thorman
Andy and Susie Spence	Paul and Jane Stewart	Jill Swartout	Ms. Jennifer C. Thornton
Barb Spencer	Mrs. Peter Stewart	Mr. John G. Swartout	Eileen and John Thorp
Don and Barbara Spencer	Tom and Missy Stewart	Mr. Charles Swearingen	Joe and Kathy Thorpe
Gerard H. Spencer	Bill and Betsy Stewart	The Sweeney Family	Ben Thoun
Steve and Julie Spencer	Ms. Mary Stewart Scholl	Mr. and Mrs. Robert R. Sweeney	Ed and Diana Throckmorton
Garth and Mabel Spencley	Jeffrey Stimson	Tom and Kathy Sweet	Don and Susan Thurow
Mr. and Mrs. Stephan J. Speth	Timothy and Ning Stockdale	Thomas and Ellen Swengel	Mr. John M. Thurston
Leigh Spicer and Edward Blake	Peter Stockemer	Mrs. Peggy Swenor	Mark and Francine Thuston
Judy Spiekhout	Terry and Marilyn Stocker	Randal and Barbara Swiech	Mary and Mark Thut
	Tina Stoeberl	Glenn and Ruth Swier	
	The Stoflinsky Family	Mr. and Mrs. Bryan M. Swift	

Deane and Deborah Tierney	Pam Tyler	Steven, Julie and Annaliese Voci	Cade and Tim Warren
Mary Tigner-Rasanen	Denise and Lyle Tyler	George and Terre Voegeli	John A. and Marlene Warzecha
Patricia Tischbein	Thomas and Theresa Tytar	Greg and Jan Voelker	Andrew Wasco
Ms. Julieanne Tobin	Mr. and Mrs. Gregory Ulmer	Kenneth and Jill Vollick	Bill and Fran Washington
Mr. William Tobin, Sr.	University of Michigan Biological Station	Karen and David Volz	James Wasmuth and Carol Bosche
Jack and Meghan Todd	Ms. Tamara S. Upham	Theresa Vondra	Sara Wassenaar and Rich Frutiger
Larry and Jane Todd	Jeff and Barbara Upton	Mrs. Chris Voran	Mr. and Mrs. James R. Waterston
Mrs. William R. Todd	Mrs. Joann Urbin	Mr. and Mrs. Richard A. Vorraber	Mrs. Donna Watkins
Mr. and Mrs. Donald J. Toffolo	Mike and Barb Vacketta	Marvin and Sharon Vosburg	Mr. Bruce Watson
Ms. Jane Tol	Mrs. Ruth Vail	Dr. and Mrs. James C. Votruba	Mr. and Mrs. Robert S. Watson
Andi and Ben Tolzdorf	Cynthia Van Allen	John and Susan Vrondran	Stephan and Susan Watson
Mrs. Ingrid Tomey	Sara and Daryl Van Tongeren	Linda Wacyk	Ms. Linda P. Wearn
Michael and Sandra Tomkovicz	Mr. and Mrs. Daniel R. VanAcker	Mr. Kenneth J. Wadland	Donna and Randy Weast
Travis Toner	Gerry J. Vanacker	Thomas and Lisa Wadsworth	John R. Webber
Mrs. Kim Tonkavich	Kay and Kent Van Allen	Ed Wagar and Marci Singer	Mr. Donald Weber
Kim and Frank Torbeck	Ms. Karen vanAssenderp	Larry and Sally Wagle	Donna Grisez Weber
Mr. Greg Torsky	Douglas and Kathy Vance	Brian Wagner and Davonne Rogers	Natalie Weber
Ms. Elaine Touscany	Jim Vance	Mr. Hans H. Wagner	Dr. and Mrs. Paul A. Weber
Ted and Cathy Townsend, Jr.	Peter and Eleanor Vance	John and Lore Wagner	Chris and Nancy Weber
Ann Marie Tracey and Daniel Buckley	Mr. and Mrs. Simon S. Vance	Korey and Chuck Wagner	Bill and Denise Weber
Michael Tracy	Dave and Penny VanDam	Polk and Sunny Wagner	Mr. Michael E. Weede
Nicholas Tracy	Trevor and Kari VandenBrink	Thomas Wagner and Malinda Smyth	Emmaline Weidman and Daniel Kantor
Mr. Peter Trantow	Dr. and Mrs. Ronald D. VandenBrink	Daniel and Susan Wahl	Jenny Wein
Mr. David Trautman	Ms. Roberta L. Vander Breggen	Chris Waibel	Norman and Karan Weinberg
Travelling Chef Inc.	Ida VanderPoorte and Brian Murphy	Joseph and Cheryl Wald	Mr. and Mrs. Robert J. Weins
Louis and Catherine Tremonti	Tom and Monique Vanderwerp	Michelle Walk	Lee Weisbach
Mrs. Laurence E. Trevarrow, Jr.	Mr. and Mrs. Tim VanDeVelde	Andrew and Caroline Walker	Jeff and Bonnie Weisburg
Mr. James R. Trimpe	Mr. and Mrs. Gerald VandeVusse, Jr.	Mr. James N. Walker	Drs. Mark and Susan Weiss
Marguerite Trixler	Mr. and Mrs. Henry Van Dusen, III	Mr. and Mrs. Jerry Walker	Jean and Billy Weiss
Andrew and Corinna Troth	Paul and Maryagnes Van Klaveren	Joe and Charlotte Walker	Mr. and Mrs. James A. Weissenborn
Tim Troupe	Mr. and Mrs. Ronald L. VanSickle	Bill and Marty Walker	Dell and Bonnie Weitzel
Trout Creek Condominiums	Paul and Margaret VanWagoner	David F. Wall and Judith A. McKay	Chris and Jenny Welch
Omar and Dawn Troyer	Thomas and Beth Varner	Mr. and Mrs. John S. Wallace	Mr. and Mrs. Philip Welch
Gretchen Trudeau	Beth Varty	Kelly Wallace	Phillip Weldy
Ridgely Trufant	Mr. and Mrs. Robert H. Vasil	Wells Wallace and Michael Dulfer	Christopher and Melissa Welke
Grace and Steve Truman	Vicki Vassalo and Tom Hannah	Mrs. Lois Allan Waller	Sue Welker
John and Virginia Trumble	Paula J. Vaughan	Trigg and Ellen Waller	Ms. Liz Weller
Brent and Sara Truscott	William and Nancy Vaughn	Ray and Victoria Wallick	Mr. and Mrs. Daniel G. Wells
Cash and Pat Tryban, Jr.	William and Stephanie Veling	Walloon Lake Association & Conservancy	Terri Wells
Mr. and Mrs. Adam Tsaloff	Kevin and Kara Venderley	Priscilla Walmsley and Doug Kimble	Robin Welsh and Tim McDermott
Martin and Suzanne Tuck	Rob and Kaelynn Veneri	Mr. Edward R. Walters	Winnay Wemigwase
Bruce and Anne Tucker	Daniel and Krissie Verbic	Christopher and Natalie Walts	Rick Wendland
Mrs. Christine Tucker	Mrs. Pat Verhelle	Mr. Gregory R. Walz	David and Joan Wendling
Mr. and Mrs. Harry J. Tullar	Mr. and Mrs. John Verhoeven	Joe and Vreni Wandeler	Mr. and Mrs. Jeffrey T. Wendling
Ben and LaVaun Tumminello	Mark and Tina Verlinden	Steven and Julie Ann Wang	Dr. Jay A. Werschky
Jason and Pamela Tunney	Michael and Sarah Verlinden	George and Joyce Wanhainen	Carol Wesch and John Gross
Ken and Lisa Turk	Vernales Restaurant	Brent and Sara Ward	Mr. and Mrs. Phillip Wesorick
Mr. and Mrs. Stephen F. Turkal	Dena H. Vernon	Ms. Dana Ward	Brent and Tina West
Larry and Susan Turnage	Dr. and Mrs. Thomas J. Veryser	Mrs. Sara Jo Ward	Nikkie West
Mr. and Mrs. Michael L. Turnbull	Ms. Carole Vial	Mrs. Nancy A. Ward	Ms. Sue Ellen West
Nancy and Bruce Turner	Alan and Bev Vicstein	Sarah and Zach Ward	Ms. Westendorf
Mr. and Mrs. Lawrence Turner	Neil Victor	Thomas and Tracy Ward	Ms. Linda L. Wetherbee
Sandy and Chris Turner	Mr. Roy A. Vincent	Tracy Ward	Mr. and Mrs. R. Paul Weyand, Jr.
Mr. Todd M. Twichel	Mr. and Mrs. John Vine	Greg and Sue Warner	Rhonda Weyer and Peter Poznak
Mr. William Twiddy	Jessica and Daniel Viner	Mr. and Mrs. John B. Warren, Jr.	Branden and Ashley Wheeler
Mrs. Marilyn Twining	Jerry Vis	William and Christine Warren	Jack and Francey Wheeler
Bryan Twinn	Mary Voce		Mr. Mark L. Whicker
Martha and Mark Twombly			Ms. Mary Ann Whipple

Larry and Wendy Whippo
 Donald Whitacre
 Roger and Sue Malloure Whitaker
 Douglas and Bernie Whitcomb
 Scott and Marty Whitcomb
 Dr. and Mrs. A. Randle White
 David and Beth White
 Larry White
 Nick and Betsy White
 Robert and Rosita White
 Terrie White
 Jeff and Carol Whitehead
 Michael and Maureen Whitehead
 Sharon Whitehead-van Loben Sels
 Mrs. Harriet Kenney Whitesel
 Andrea Whitley
 Mr. Jeffrey J. Whitman
 Donald Eli and Catherine Whitney
 Robert and Sue Whittaker
 Philip Whitten
 Rick and Toni Wibel
 John and Jean Wickett
 Dee and Dan Wickham
 Paul and Sherri Wiegman
 Charles Wieland
 Ms. Wendy Wieland
 Ms. Ann Wightman
 Mr. Cody Wilcox
 Dan and Joelle Wilcox
 Tim and Peggy Wilcox
 Mrs. Joyce Wilde
 Dr. and Mrs. Steven G. Wildern
 Dr. and Mrs. Robert Wiley
 Dr. and Mrs. Alan J. Wilhere
 Mr. Edward C. Wilkie
 Jan and Brad Wilkins
 Mr. Lenard Wille
 Hal and Gail Willens
 Allen Williams
 Mr. Brent Williams
 Douglas P. and Susan Williams
 Gary and Laura Williams
 Dr. and Mrs. Henry P. Williams, III
 James and Cheryl Bugaski Williams
 Keith and Karen Williams
 Lois Williams
 Mike Williams
 Rick and Robin Williams
 Bobbie Rassieur Williams
 Thomas and Alyssa Williams
 Dr. and Mrs. Thomas E. Williams, Jr.
 Sam and Cass Williamson
 Jerry and Sandy Willis
 Sean and Pam Willoughby-Ray
 Will's Outdoor World
 Mr. Lee Willson
 Dan Wilson
 Mr. and Mrs. David R. Wilson
 Jim and Sue Wilson

Mrs. Judith Wilson
 Mr. and Mrs. Paul W. Wilson
 Mr. and Mrs. Steve Wilson
 Mr. and Mrs. Thomas J. Wilson
 Mr. and Mrs. James A. Wineman
 Ms. Julie A. Wineman
 Dr. and Mrs. Raymond J. Winfield
 Mr. and Mrs. Donald L. Wing
 Lawrence B. Wingard
 Amy and Patrick Wingate
 Jim and Pam Wingate
 Ms. Jan Wingenroth
 Kris Wingenroth
 Carole Winnard
 Mike and Catherine Winnell
 Mr. and Mrs. Roger W. Winslow
 Mr. Ken Winter
 Carl and Jamie Winters
 Mr. and Mrs. Wayne D. Wipp
 Mrs. Barbara Wiseman
 Doris and Bill Wisniewski
 Valerie K. Witt
 Steve and Holly Wittmann
 Mr. and Mrs. Dennis Wojan
 Kenneth and Susan Wojcik
 Gary and Judith Wolf
 Mr. James M. Wolf
 Katie Wolf and Michael Beaulac
 Hal Wolff
 Patrick Wolff and Angela Neff
 Dale and Christina Wolford
 Zachera Wollenberg
 Adam and Traci Wong
 Patrick Wong and Carrie Bake
 Wong
 David and Mary Wood
 Katy Wood and William Burgess
 Bob Wood and Ruthi Bloomfield
 Mrs. Diana Woodbridge
 Kenneth and Carol Woodhurst
 Paul and Marcia Woodruff
 Teresa Woodruff and Thomas
 O'Halloran
 Daniel and Sara Woodward
 Mr. and Mrs. John W. Woody, Jr.
 Warren and Linda Woolcott
 Jim and Carole Wortley
 Ms. Anne Woudenberg
 Mr. F. Robert Woudstra
 Frank Wren
 Alice Wright
 David and Susan Wright
 Wright Family
 Mr. and Mrs. Floyd Wright
 Mr. and Mrs. J. Patrick Wright, Jr.
 Ms. Joan F. Wright
 Lawrence and Renee Wright
 Sally P. Wright
 Stephen A. and Kelly M. Wright

Dr. and Mrs. Daniel E. Wujek
 Joel and Dorothy Wurster
 Robert and Christine Wyatt
 Mr. and Mrs. Gerald F. Wyderko
 Mr. and Mrs. Wynder
 Ervin E. and Joyanna H. Wyne
 Joseph and Elizabeth Wyskiel
 Yvonne Yamashita and Charles
 Daggett Harvey, Jr.
 Steven and Judy Yauch
 Glen and Jane Young
 Mr. and Mrs. James G. Young
 Jeff and Deb Young
 John and Anna Young
 Mark and Barbara Young
 Mike and Wendy Young
 Mr. Michael D. Young, Sr.
 Sarah Youngblood
 Tom and Kim Youngblood
 Tom and Sandy Youngblood
 David P. and Linda Yudasz
 David and Debra Zagurny
 John and Deborah Zahnow
 Lee Zajac
 Mr. Robert Zakar
 Gary Zebko
 Richard and Joan Zech
 Ed and Jo Zeerip
 Dr. and Mrs. David Zehnder
 Mr. and Mrs. John A. Zendt
 Mrs. Herbert T. Zent
 Mrs. Paul Zerges
 Drs. Demetrios and Maria Zestos
 Marjorie Ziefert and Chuck Kieffer
 Joe and Kendra Zielinski
 Ms. Ellen Zienert
 Lonny E. Zietz
 Frank and Faye Zimmerman
 Mrs. Virginia Zimmerman
 John and Khristi Zimmeth
 Christopher and Marsha Zingas
 Lisa Zittis
 Mr. and Mrs. John H. Zobus
 Doug and Nancy Zoerhoff
 Mr. and Mrs. David Lee Zorn
 Mr. William Zousmer
 Barbara Zuehlke
 Dr. Martha Zuehlke
 Vince and Cheryl Zuellig
 Jennifer Zwemer





So many ways to give...

You have already been generously protecting land with us. If you would like to make a forever impact with LTC, did you know that we offer Charitable Gift Annuities? Recent tax law changes allow those 70½ or older to use a Required Minimum Distribution up to \$50,000 to create a Charitable Gift Annuity. This is a great way to continually support the mission of the Conservancy and also provide you with annual income.

Would you like to learn more? Contact:
Emily Hughes, Chief Development Officer, at
emily@landtrust.org.



Non-profit Org.
U.S. POSTAGE PAID
Petoskey, MI
Permit No. 110

Little Traverse Conservancy
3264 Powell Road
Harbor Springs, MI 49740
www.landtrust.org

