



# TO BE RESILIENT

Winter 2020 | Vol. 42 No. 4  
[www.landtrust.org](http://www.landtrust.org) | 231.347.0991

PHOTO BY JOHN CURTIS  
*Education in the Face of a Pandemic, pg. 3*

PROTECTING THE NORTH COUNTRY WE LOVE



## The LTC Team

**The individuals, families, businesses, and foundations who are current members.**

**The 400+ volunteers who donate thousands of hours.**

### BOARD OF TRUSTEES

Joe Kimmell, *Chair*  
Cedric A. (Rick) Richner, III, *Vice Chair*  
Jon Lyons, *Treasurer*  
Karie Slavik, *Secretary*

Josh Baker	Tom Litzner
Stuart Bishop	Lisa Loyd
Lisa Blanchard	Glen Matthews
Richard M. Bolton	Harriet McGraw
Michael T. Cameron	David G. Mengebier
George M. Covington	John Merrill
Mary Faculak	Emerson Meyer
Jeffrey S. Ford	Maureen Nicholson
Gregg K. Garver	Marta Olson
John Griffin	David Patterson
Eric Hemenway	Consie Pierrepont
Dan Jarzabkowski	Phil Porter
Dave Kring	R. Ham Schirmer
Darrell Lawson	Meg Sprow
Nancy Lindsay	Bill Stark
Dianne Litzenburger	Susan I. Stewart

### STANDING COMMITTEE CHAIRS

Mary Faculak, *Land Protection*  
Gregg K. Garver, *Stewardship*  
John Merrill, *Education*  
Cedric A. (Rick) Richner, III, *Nominating*  
Jon Lyons, *Investment*

### EXECUTIVE DIRECTOR

Kieran Fleming

### CHIEF FINANCIAL OFFICER

Thomas Lagerstrom

### ASSOCIATE DIRECTOR

Ty Ratliff

### MEMBERSHIP & COMMUNICATIONS

Anne Fleming, *Director of Communications*  
Emily Hughes, *Membership Coordinator*  
Lindsay Hall, *Communications Specialist*

### ADMINISTRATIVE COORDINATOR

Sarah Gurney

### VOLUNTEER COORDINATOR

Cacia Lesh

### LAND PROTECTION

Caitlin Donnelly, *Director*

### ENVIRONMENTAL EDUCATION

Sarah Mayhew, *Director*  
Sarah Koetje, *Education Specialist*

### STEWARDSHIP

Derek Shiels, *Director*  
Melissa Hansen, *Director of Conservation Easements*  
Charles Dawley, *Technology & Stewardship*  
Mike Lynch, *Preserve Stewardship*  
Brad Von Blon, *Stewardship Technician*  
Joe Graham, *Special Projects*

# Our Common Ground

*a word from Kieran Fleming, Executive Director*

It's 7:45 am, November 3, 2020. You can cut the tension with a knife. Election day. I decided to start my column this morning for two reasons: 1) The tension around the election inspires thoughts, something I must capitalize on for its rarity; 2) Lindsay Hall, LTC Communications Specialist, is starting to give me the same look my mom used to give me while I was slinking towards my room but was supposed to be doing the dishes. You don't want to let Lindsay's deadlines pass.

The pundits will have you believe that whatever happens today will change the course of our lives to one extreme or another, regardless of what your political orientation is. Anne and I opened the day with a conversation about how our society views politics differently today than when we were younger. About how we react to it and to each other. And having been through nine presidential elections, my observation is that our reactions have become less healthy, our interactions more heated. I dare to guess others will agree with this assessment, and the blame goes all around.

I don't mean to gloss over how seriously people take politics these days. Nor do I want to suggest that one side is worse than the other. And I certainly do not want to reveal my personal politics. But if the pundits are right, I do think we all need to evaluate our individual reactions if for no other reason than our own peace of mind.

Anne is very balanced in her approach to physical and mental fitness. She leans on meditation, yoga, and an occasional glass of tequila. Me? Not so balanced, but I am working on it. Past LTC Board Chair Marta Olson recently gave me a book on stoicism. I just started it, but I am already embracing some of the principles. So far, the most significant is that we are all in control of how we react to things. No one can change that unless we let them. So here is my plan: 1) Do not listen to the pundits, especially on social media (see my last column for that rant). They only amp up our reactions; 2) Aim to stay balanced, respectful, and open to dialogue. Just because I disagree with someone does not mean they are wrong; things are usually more complex than that; 3) Remember that I alone control my reaction to everything; 4) Rally around the core values we share.

This last one is why I love working for LTC, a non-advocacy organization to its core. We deal with people from all walks of life and the reason they come to us is a common love for northern Michigan and all its glory. Republicans, Democrats, and everyone in between who live here or visit our region do so for a similar reason. This area offers beautiful scenery, clean water, abundant wildlife, and serenity. These things are all connected and if we get together and push for what we value, all ships rise. That is what LTC is about and all are welcome regardless of which ticket you punch today.

Because such words of optimism fly in the face of the bitterness of today's politics, this column might be construed as insensitive or oblivious to the serious social and policy outcomes that this election represents for people. Calling for cooperation on topics such as land conservation may seem to some as dismissive of more important or urgent issues. But we need to start somewhere and working together for something so tangible and beautiful as the land we love seems as good a place as any.

It is hard to hold a grudge against people you make progress with, whom you identify with, people you learn to like. And when you like someone, you are more likely to listen to them. That seems more important than pointing fingers over how we got here. Perhaps I have more faith in our humanity than the pundits do and by the time this goes to press, we will know if such faith was naïve.

All I can say is that not long after the election, my dog Zeke and I will be bird hunting with a great friend (whose political viewpoint is contrary to my own) and his dog. We will chase our pups through the fields, miss a few birds, have a glass of bourbon each evening, reminisce about the great times we have had, cuss like sailors, and disagree with each other. We will do it repeatedly for as long as our legs can carry us, and our dogs will lead us. And I believe we will have that option because over the last 48 years, thousands of people across the political spectrum have repeatedly set aside their differences, and joined forces as members of LTC to ensure that we will always have what we value so much up here in the North Country.





# Looking Up and Looking Forward

## EDUCATION IN THE FACE OF A PANDEMIC

**Y**ou have an education department to be proud of. The challenges brought forth by the pandemic have manifested creativity and rattled our approach to education in all the ways that feel right. It's a welcomed adjustment that has brought growth, learning, and advanced our ability to adapt. It's a rattle to the system that has highlighted our commitment to the communities we serve and strengthened our connection to students, teachers, and administrators. A rattle that has elevated our program model, brought greater depth to our offerings, and prioritizes listening.

Many schools are not allowing classes to leave the school grounds this year. What a great opportunity for our education team to help students connect to the land right around their schools. Mackinaw City, Alanson, and Blackbird Elementary schools have all deepened their connection to local lands through our programming this fall. Your support helps protect land in so many ways, starting with teaching children to love it!

## Winter Programs

We are planning on offering winter programming. Whether you are teaching at home or in a school, we want to serve you. Please contact us to explore ways our education staff can meet your needs and to schedule your FREE outdoor education program. Sarah Mayhew: 231.344.1018 or [sarah@landtrust.org](mailto:sarah@landtrust.org).





# WETLAND PROTECTED

## JOHN J. HELSTROM NATURE PRESERVE AT MUD LAKE BOG

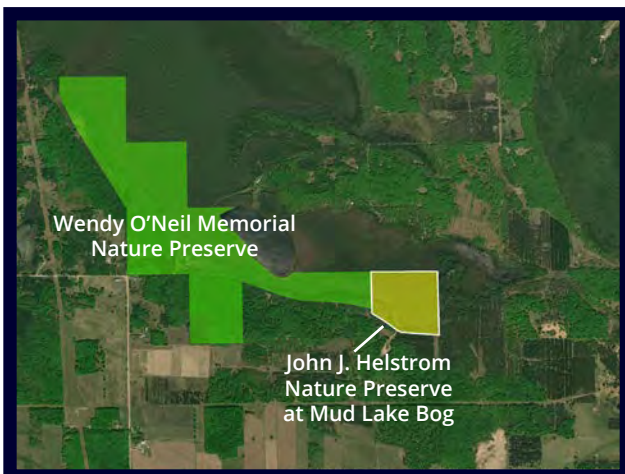
A generous gift from the John J. Helstrom Memorial Fund of the Community Foundation for Muskegon County has made possible the protection of a 34-acre forested wetland in Cheboygan County. The land is now known as the John J. Helstrom Nature Preserve at Mud Lake Bog. The new preserve adds to the existing Wendy O'Neil Memorial Nature Preserve, bringing the total land protected to 238 acres.

According to the Helstrom family, John had a great appreciation of the outdoors and the need to preserve it for future generations. As a child and an adult, he enjoyed visiting the natural areas of Michigan. When he was a young man, one of the favorite places for his family to visit was a bog in a local state park. It was considered a great adventure to see the special features of the bog, including plants such as sphagnum moss, pitcher plants, and sundew. John and his family also enjoyed seeing the animals that lived in the bog, such as herons and frogs.

This is the third LTC nature preserve that has been established in John's memory. His family knows that protecting these places would be pleasing to him. Previously protected preserves have been the John J. Helstrom Nature Preserve on Shelldrake River, just south of Whitefish Point in Chippewa County, and the Helstrom Family Nature Preserve, just west of Crooked Lake in Emmet County. All three preserves involve the protection of an important body of water and sensitive habitats, as well as the surrounding watershed.

"It has been such a pleasure to work with the Helstrom family to create these nature preserves," said Ty Ratliff, LTC Associate Director. "The intention and love that this family has for northern Michigan and for paying it forward is exactly why this organization was first founded almost 50 years ago."

Your support as a member of LTC helps to protect this special place forever. The John J. Helstrom Nature Preserve at Mud Lake Bog is another project that was only made possible because of your annual commitment to pursue the protection of more sensitive lands in our service area.





# Exactly As It Should Be

## SLOUGH FAMILY NATURE PRESERVE

Jim Slough has lived his whole life in Ellsworth and has a deep love of the region and the land. His family's roots go back four generations. Jim and his wife Katie raised four children in the farm house along Slough Road where they still live today. A former dairy farm owner, current business owner, and part-time pilot for Island Airways in Charlevoix, Jim is well connected to the upper chain of lakes region and its natural beauty and assets. "I think we can get complacent about how many natural resources we have right here," he remarked.

One of the neighboring families to the north of the Slough Farm was the Blanchard Family. Jim recalled a conversation with Ruth Blanchard roughly 20 years ago, "I never knew her well, but I remember in that conversation she talked about the land that she owned near her home, and how she really cared for it." Ruth's niece, Adrienne Alm, confirmed that her aunt bought the land for the deer and to keep it from being developed, "We called it Ruthie's Swamp, and she always carried a walking stick as she explored it."

Fast forward two decades and Katie Slough noticed a real estate sign on Blanchard's property at the edge of East Jordan. Ruth had passed away and the land was being sold as part of settling the estate. Something pulled Jim to take a closer look at the land, and when he did he saw how special it really was. "Even though the property is only about 10 acres, it is a huge watershed collecting water from several streams and funneling

into one of the primary creeks flowing into the southern end of Lake Charlevoix." Jim discovered that as he drove downhill toward the lake, the main stream crossed the road in several places, finally emptying into Lake Charlevoix next to a small hotel.

Jim and Katie decided to buy the land and protect it. They knew it was something that Ruth would have really appreciated and their family was in full support. "As wet as it is, there is still an upland portion that the health department thought could have been a site for a small home," Jim said. "I just felt it would be so much better to leave that land natural." Adrienne couldn't believe how perfect it was that the Sloughs purchased the land to protect it. "I feel this end result has been magical and exactly as it should be," she said.

The land is now known as the Slough Family Nature Preserve and it lies along more than a quarter mile of Ellsworth Road and the East Jordan Breezeway. "While it is a rare opportunity for us to protect direct shoreline on Lake Charlevoix, protection of the immediate watershed is the next best thing," said Caitlin Donnelly, LTC Director of Land Protection. "The health of that land is directly correlated to the health of the beautiful lake."



Jim's granddaughters, Saige Slough and Stella Zerby, exploring and enjoying the many creeks of the preserve.







# You Keep Us Going!

Through a global pandemic, unpredictable weather, and juggling multiple projects at once, our volunteers have absolutely blown us away this fall with the work they were able to help us accomplish. The trails you love to explore are made possible because of members like you and created and maintained by our incredible volunteers. Here are just a few photos from the busy fall season:

1. Staff members, Brad Von Blon and Derek Shiels, working on the trails at the Consuelo Diane & Charles L. Wilson, Jr. Working Forest Reserve just outside Harbor Springs. Trails were extended this fall and now reach almost two miles.
2. Trail camera data from the first two weeks that the Tanton Family Working Forest Reserve bike trail was open showed an average of 62 visitors per day. The trail has unquestionably become a popular option for local mountain biking, and hikers are enjoying the new trail as well.
3. With support from a grant through the Petoskey-Harbor Springs Area Community Foundation and a hearty crew of volunteers, we extended and improved boardwalk sections at the Allan and Virginia McCune Nature Preserve. (L-R: Jim Ehrnst, Richard Jenkins, and Stan Royalty)
4. We're excited to announce the completion of a new trail system at the Elizabeth B. Hoffmann Nature Preserve, just 10 minutes south of downtown Charlevoix. The trail offers some hills, traverses through a mix of apple orchards, woods, and farm fields, and follows a section of the beautiful Inwood Creek.
5. A large bat "condo" was completed and placed at the Nathan Beem Memorial Nature Preserve in Charlevoix County. As loss of habitat leads to declining bat populations, they are in need of conservation more than ever. Built by the Petoskey High School Building Trades class, the bat condo is over 16 feet tall and able to house up to 2,000 little brown bats. Its design mimics the bats' natural habitat of loose shaggy bark and hollow trees.



3.





# Business Member Spotlight:



Klepadlo • Winnell • Nuorala • P.C.

*Certified Public Accountants & Trusted Advisors*

Klepadlo Winnell Nuorala P.C. (KWN) is our business member spotlight this year. Since its first gift 1989, KWN has been a vocal supporter of LTC, most recently helping fundraise for our mountain bike trails. Here are some words from its team on why they love the mission of Little Traverse Conservancy:



The Richards family at The Hill Nature Preserve In Charlevoix County.

**K**WN is a locally based and managed accounting firm in Petoskey. We have a special focus on giving back to the wonderful communities that support us, and that we are so fortunate to be a part of. Our for-profit business has much in common with the non-profit Conservancy - a spirit of community leadership with an emphasis on serving our region, providing wonderful jobs, and caring for its membership and staff for generations to come.

There is also an interesting connection between full-service accounting and land preservation. Just as we strive to help our clients achieve their goals by focusing on long-term strategic financial planning, the Conservancy strives to protect and preserve the incredible natural resources of our region that will benefit generations to come in ways that we cannot possibly imagine.

There is another important connection. At KWN we focus with our team on finding a work-life balance that will hopefully lead to happier, more fulfilling lives. We happen to work in an industry where we spend countless hours in front of screens at desks, much like many others in our modern world. We believe it is critical to unplug from this human-made environment and recharge outside of the office. For many of us, this leads out into the natural world to hike, bike, fish and hunt - all activities made possible by LTC preserves all over the region.

## Thank You 2020 Business Members!

Thank you to the following businesses that have partnered with Little Traverse Conservancy to protect land in northern Michigan. Those listed made a donation between November 5, 2019 and November 5, 2020. Please call our office at 231.347.0991 if we missed you on this list.

American Home Technology, Inc.  
Ameriscape, Inc.  
Andrew Kan Travel Service  
Archambo Electric  
Arfstrom Pharmacies, Inc.  
B and G Investment Properties Inc.  
Bar Harbor  
Bay Harbor Yacht Club  
Bay Inn of Petoskey  
Bay Pines Veterinary Clinic  
Bay Street Orthopaedics  
Bear Creek Organic Farm  
Bearcub Outfitters  
Beaver Island Boat Company  
Bell Title Agency of Petoskey/Harbor Springs  
Benchmark Engineering, Inc.  
Berkshire Hathaway Home Services  
Big Stone Bay Fishery, Inc.  
Bill's Farm Market

Bingham Insurance Service  
Birchwood Property Management  
Birchwood Realty  
Elizabeth Blair Fine Pearls  
Blarney Castle Oil Company  
Brady's Carpet Cleaning  
Burt Lake Marina Inc.  
Burt Lake Preservation Association  
Carter's Imagewear and Awards  
Charlevoix State Bank  
Cherry Republic  
Citizens National Bank, Cheboygan  
The Clothes Post  
Consumers Energy  
The Cottage Company of Harbor Springs  
Crooked Tree Breadworks  
Dave's Barbershop  
Dave Kring Chevrolet Cadillac  
Decka Digital, LLC  
Dentistry By the Bay

Douglas Lake Improvement Assn.  
Drost Landscape  
East Jordan Plastics  
Edgewater Design Group  
EJ  
Emmet County Lakeshore Assn.  
Evening Star Joinery  
W. W. Fairbairn and Sons, Inc.  
Fergus Co. LCC  
Ferguson and Chamberlain Assoc.  
Fifth Third Bank - Petoskey  
First Community Bank  
First National Bank St. Ignace  
Flowers from Sky's the Limit  
Friends of the Boyne River  
Grandpa Shorter's Gifts  
Graham Building and Remodeling, LLC  
Great Lakes Energy - People Fund  
H. T. Roofing Co.  
Haggard's Plumbing & Heating



Some of our staff favorites are...

"The Richards family spends a lot of time adventuring in northern Michigan. Our favorite LTC trail is The Hill. We love that it is right down the road from our house and we can access it during any season of the year."

"As a Girl Scout leader, we have utilized the education programs that LTC offers. Our girls love learning about the outdoors from the amazing staff that put on the programs. We can't wait for our next one."

"My family and I have enjoyed many of the Little Traverse Conservancy's trails but our favorite is the Allan and Virginia McCune Nature Preserve. We first discovered it in the winter for snowshoeing with our dog and have continued to go back every season of the year. We love that it is so close to Petoskey, yet secluded enough that we can go on a hike and not see a single person. We are looking forward to taking our son on hikes while he is young to instill a love for nature and our beautiful area."

We are so proud to partner with LTC and look forward to the continued success of an organization that is an incredible community asset. We believe LTC is truly building a foundation of land preservation that we can all be confident will benefit our grandchildren, their grandchildren, and the many generations that will follow.

- Todd Winnell, KWN



HANNI Gallery  
Harbor Brenn Insurance Agencies  
Harbor Springs IGA  
Harbor Wear  
Hilda  
Holiday Vacation Rentals  
Irish Boat Shop  
Ironwood Construction Company, LLC  
Johan's Pastry Shop  
Johnston Engineering, LLC  
Klepadlo Winnell Nuorala P.C.  
L'Arbre Croche Fund  
Latitude 45 Bicycles and Fitness  
Trisha Lockman  
Legs Inn  
M & M Plumbing, Heating, Cooling  
Mackinaw Area Historical Society  
Heritage Village  
May Plumbing and Heating  
McLean and Eakin Booksellers  
Meyer Ace Hardware  
Michigan Scientific Corporation  
Midwest International  
Mitchell Graphics Inc.

Mr. Brian Babbitt  
Mountain Top Tree Company  
Muller Electric Company  
Mullett Lake Area Preservation Society  
Music Makers of Petoskey  
North by Nature Landscaping  
Nub's Nob Ski Area  
The Party Shoppe on Pickerel Lake  
Pat Cormican, Realtor  
Pateman Chiropractic Center Petoskey  
Performance Engineers, Inc.  
Personal Graphics  
Petoskey Moving Company  
Petoskey Plastics  
Petoskey Pretzel Co.  
Pleasantview Properties LLC  
Polly's Planting and Plucking  
Preston Feather Building Centers  
Rasmussen, Teller, O'Neil and  
Christman, PC  
Raven Hill Discovery Center  
Resort Reservations, Inc.  
Reusch Jewelers  
Rocking Horse Toy Company

Ruffed Grouse Society/American  
Woodcock Society  
Ruff Life  
Seedums Garden Club  
Shingle Roofing Service, Inc.  
Site Planning Development, Inc.  
Stafford's Hospitality  
Sturgeon River Pottery  
Teddy Griffin's Road House  
Tom's Mom's Cookies  
Toski Sands Market and Wine Shop  
Touring Gear  
Travelling Chef Inc.  
Urvana's LLC  
Van's Business Machines, Inc.  
Van Dam Custom Boats  
VanTreee and Associates  
Vernales Restaurant  
Walloon Lake Trust and Conservancy  
Ward and Eis Gallery  
Wentworth Builders, Inc.  
Wheeler Motors, Inc.  
Joel D. Wurster, PLC





# PASSING THE TORCH

Burt Lake residents, longtime LTC members, and conservation easement donors, Al and Mary Polk, recently retired from the LTC Finance Committee. They have turned their pens over to daughter, Liz Polk Lynch, to continue the tradition of personalizing membership letters for LTC. Below is an interview with Mom (Mary), Dad (Al), and Liz about their legacy with LTC.

***What connects you to the mission of land conservation in northern Michigan?***

**Liz:** It makes me happy that my own daughters can enjoy walking in the woods, being out in the natural world. I think that is really important, and I think it's an incredibly valuable resource that northern Michigan offers. In so many places people aren't able to access open "wild" spaces and losing that connection means losing a part of our humanity.

**Mom:** There is increasing pressure on the land and natural areas are disappearing. It's important to keep the land open in perpetuity, to keep it from all being developed. There is so little unspoiled, undeveloped land left.

**Dad:** We're interested in land conservation almost everywhere, but especially in northern Michigan because that is where we live. There is more undeveloped land here

than in many places, and we think that is important to maintain.

***Why do you feel it is important to support this mission each year?***

**Dad:** We're fortunate to be able to, and so we think it's our responsibility to support things like LTC. It's an important value to us. We also support the Boundary Waters Canoe Area Wilderness in Minnesota for similar reasons.

**Mom:** The work the Conservancy does is important, and we want to support it.

***If you could pass along one lesson to your children what would it be?***

**Dad:** That it's increasingly important to protect green spaces, a global warming factor. We've got to preserve as much natural environment as we can. For a while it was to the benefit of people who liked it, but conservation has become more necessary than ever.

**Mom:** I think he just said it. What used to seem like a privileged choice is more imperative.

**Liz:** That you have an obligation to be active in making the world a better place. There are a lot of ways to do that and everyone needs to figure out what that means for them. I know that my kids already see preserving the beauty of northern Michigan as one of the things they value.

***Liz, what motivated you to carry on your parents' legacy as an ambassador for LTC?***

Mom and Dad gave me an incredible childhood, and that included a lot of time on and around Burt Lake, in the woods and on the water. I feel so lucky to have had that, to still have it, and for my daughters to be able to be part of it, too. We need natural space, now more than ever, and I have a responsibility to do what I can. Volunteering is just part of what I can do.



# Welcome New Members!

Thank you to the following new members who donated between August 18 and November 9, 2020. If you were a new donor and do not see your name on the list, please accept our sincere apologies and contact our office at 231.347.0991.

Michael T. and Karen Alberts  
Mr. Thomas Auffenberg  
Jason Baiocco  
Sarah and Matthew Baughman  
John Behnke  
David Belanger  
James and Amanda Bell  
Christine and Michael Berry  
Kathy Bodzick  
Jeff and Kim Bowman  
Tom and Polly Bredt  
Koopatroopa  
Rob and Ellen Busch  
Gary and Bonnie Bussard  
Shelly Carlin  
Pamela and Glen Carpenter  
James C. and Carole Carroll  
Kurt and Sandy Carter  
Mr. J. Byron Chocola  
Ann Churchill  
Bruce and Pegg Clevenger  
Tom and Heather Comer  
Ray C.  
Mr. Daniel Costello  
Joseph Cundaria  
T. Chalmers Curtis, III  
Thornton Dixon  
Charles Duerr, Jr.  
Edward and Marjorie Dunwoody  
Sam Eakes  
Jamey Eakes  
Adam and Laura Epstein  
Fiona Fairty  
Mrs. Alfred J. Fisher, Jr.  
Ann and Robert Flanagan  
Sue Fleming  
Alex Fornal  
Mr. Leonard L. Forreider, Jr.

Mark and Laura Freed  
John Frey  
Mr. Christopher Gaede  
Cheryl and David Garrett  
Nancy Hayden  
Mary Hayes  
Steve and Cheryl Henderson  
Jacques Henning  
Ms. Pamela Hilton  
Michael and Sharon Hinz  
Daniel and Erin Ibele  
Scott Injerd  
Mark and Jennifer Jacobs  
Barbara King  
Louise Klarr  
Robert and Lesli Kleber  
Christina and Andrew Korinda  
Linda A. Kortesoja  
Sandra and Chester Kowal  
Carolyn Kraw  
John and Margaret Kukura  
Connie Landis  
Mr. and Mrs. Philo Lange, III  
Mr. and Mrs. Stefan Lauterbach  
Adam Lavallee  
George and Margo Lesser  
The Linkous Family  
Daniel and Anita Mauro  
Richard and Diane Mayer  
Jerry McClain  
Mr. Thomas McQueary  
Kay and Mike Meyer  
Sarah and Chad Mikesell  
Jeffrey Mono  
Cyndi and John Nelson  
Amanda Norcross and Stuart Brody  
Mr. and Mrs. Ronald E. Olson, Jr.  
Mike Otis

Philip Parr  
Mr. and Mrs. Michael W. Pemberton  
John F. and Deborah B. Phillips  
James and Constance Pim  
Hallie Prescott  
Bryan T. and Kathleen Ray  
Patrick and Theresa Reade  
Jodi and Robert Rogier  
Dean and Shannon Schueller  
Mrs. Jack Schulman  
Robert and Julie Sears  
Drew Seymour  
Kathy Shantz  
Rev. and Mrs. Russell Smith  
Thomas and Beverly Steckert  
Tina Stoeberl  
Travis Stoker  
Michael and Angela Strother  
Finn Sullivan  
Mr. Andrew K. Swanson  
Rajan and Susan Telang  
Tyler Thompson  
Brian and Carrie Titus  
Alice Todd  
Mike Travis  
Lyman and Sarah Vaughan  
Cinthia Keller and Paul Vermeesch  
Brad and Terri Warnecke  
Kathy and Dan Wassman  
Timothy and Marcia Webster  
Andrea Whitley  
Victor and Lynn Wittkowski  
Gary and Judith Wolf  
Hal Wolff  
Mike and Brooke Woodham  
Laurie Woodhouse  
Scott Wycoff  
Rick Zimonick



Want to honor someone this holiday?  
*Give the gift of land!*

Give the gift of membership, an honorarium, or memorial this holiday. These gifts provide exceptional support to conservation in northern Michigan AND make an amazing present for someone you love. It says that you honor their love for northern Michigan. Visit [www.landtrust.org](http://www.landtrust.org) for more information.



# GRATEFUL FOR YOU

**My Sister's Bake Shop** for donating volunteer snacks which were the highlight of our work day.

**Chad Johnson and Brian Iverson** for rebuilding the fence at the Offield Family Viewlands.

Preserve Perfectionists **Bruce Booth, John Baker, Kelly Jo Kitchen, Hannah D'Angelo, Ellen Waller, Mary Trout, Jim Ehrnst, Richard Jenkins, Stan Royalty, Eileen Thorp, and John and Mary Merrill** for improving and building new boardwalks at the Allan and Virginia McCune Nature Preserve.

Preserve Perfectionists **John Baker, Dan Dueweke, Chris Ford, Jim Ehrnst, John Merrill, Don and Mary Trout, and Walter Ustes** for hauling lumber and building boardwalks at Sleepy Hollow Nature Preserve.

**Joe Graham and Emily Hughes** for lending the use of their trailer.

**Dave McVicker** for sharing trail maintenance knowledge.

**Bruce Booth, Richard Jenkins, and John and Mary Merrill** for deep cleaning at the Agnes S. Andreae Cabin when almost no one else would brave the ash bucket and mouse droppings.

Preserve Perfectionists **John Baker, Richard Jenkins and Walter Ustes** for building a workbench at the LTC workshop.

Volunteer preserve trail and parking area mowers **Les Arnold, Gary High, Nils Lindwall, Bill Olstrom, Bill Sanderson, and Scott Smith.**

**Mary Jane Clayton, Hannah D'Angelo, and Mary Merrill** for help with data management.

**Ben Musielak** for donating labor and tools.

**Bonnie Mikkelsen and Tim DeWick** for transportation to Marquette Island.

**Bob Handyside and Mike Geary** for their consultation at the Offield Family Viewlands.

**Daniel Bartz and Carolyn Belknap** for assistance with trail access analysis.

**Mary Stewart Adams** for leading the Night Sky Storytelling series at the Offield Family Viewlands this fall.

**Glen Matthews** for preserve reconnaissance.

**Todd Parker, Todd Petersen, and Ray Gaynor** for photography.

**Bird's Eye Outfitters** for sharing solar lanterns for our Night Sky program.

**Dennis Beale** for sign work at the Aldo Leopold Nature Preserve on Marquette Island.

**Sally Bales, Michaleen and Nick Karay, Barb Bechhold, and Rye Muir** for helping with our fall mailing.

**Anne T. Melvin** for sharing her invaluable knowledge and experience with staff.

## VOLUNTEER SPOTLIGHT: Dale Landes

LTC member since 2000 and volunteer Land Steward at Cain's Creek Swamp Nature Preserve and Agnes S. Andreae Nature Preserve since 2013.



*A native of Pennsylvania, Dale raised his family in northern Michigan and lives on Black Lake in Cheboygan County. He spent his career teaching Spanish at Cheboygan Area High School and has enjoyed biking, fishing the Pigeon River, and traveling since retirement. Dale is a rare find and LTC is lucky to have his support and volunteerism. Thank you Dale!*

"The Andreae Preserve and Cain's Creek Swamp are two places that I will always cherish. I love being in my kayak along the shore of Cain's Creek Swamp Nature Preserve on Black Lake in the early morning. It's almost like a wilderness experience. I can enjoy the solitude as I witness the songbirds along the shore, an occasional eagle, and perhaps a loon family with its newly hatched chicks. I am in awe of the work that the LTC staff and volunteers have been doing, and I am happy to be a very small part of that. We are so fortunate to live in an area of such natural beauty. It is important to me that we continue to preserve these precious resources for future generations to enjoy. Even though the work that I do seems insignificant, I remind myself that many hands make light work."





# One Million for the Maple

PHOTO BY TMPETERSEN

## SIGNIFICANT MAPLE RIVER WATERSHED PROTECTION

This past September, Little Traverse Conservancy was officially approved for a \$1 million grant from the North American Wetlands Conservation Act (NAWCA). "This was a significant breakthrough for our efforts in this important ecological region of our service area," said Caitlin Donnelly, Director of Land Protection. The West Branch of the Maple River is 16 miles long and drains 93 square miles of land, arising out of the Pleasantview Swamp in Emmet County. The Maple River eventually drains into Burt Lake where it follows the Inland Waterway Route all the way to Cheboygan, emptying into Lake Huron through the Cheboygan River. Donnelly added, "We hope that with the closing of a very high-priority project along the West Branch of the Maple River, we will be able to build momentum to ensure more of the watershed can be permanently protected."

## PARTNER SPOTLIGHT: O.U.T. House Consortium

We want to offer a special shout-out to a group of people in Sault Ste. Marie who recently formed the Outdoor Use of Trails or O.U.T. House Consortium in order to improve outdoor recreation in the greater Sault region. Driven by their individual passions and explained by their mission statement:

*"The O.U.T. House Consortium was created with the intent of focusing on trail development, maintenance and promotion, whether it be hiking, biking or water trails. We work closely with government agencies, other non-profit agencies, private citizens and business owners to establish a network of trails for non-motorized recreational transit in the Eastern Upper Peninsula."*

This true grassroots group has formed their own 501(c)3 to begin working on initiatives. Everything they plan has both a health and a fun factor to it. For more information, visit [www.outhouseconsortium.org](http://www.outhouseconsortium.org).





# Memorials & Honorariums

Gifts given between August 18 and November 9, 2020.

## IN HONOR OF

### Ian and Sally Bund

Mr. and Mrs. Edward Koza

### David Irish

James and Lorraine Peck

### Bill and Lori James

Gwil and Kathy Price

### Nancy Kamieniecki

The Doyles

### Marta Olson

Sally and Ian Bund

Mr. Ken Winter

### Ty Ratliff

Ms. Sara Rose

### Ham Schirmer

Michael Boylan and Michelle Krebs

### William and Jeanine Smith

Harold and Lynda Friedman

### Donald Streett

Carolyn Simpson, David Streett and  
Michael Streett

## IN MEMORY OF

### Frances Alden

Community Foundation of Louisville  
Beargrass Fund

### Dick Bartosik

Mrs. Raymond Margherio

Lynn Margherio

Judge and Mrs. Richard Pajtas

Ty and Sarah Ratliff

### Nathan D. Beem

RiversEdge Outfitters, Inc.

### Susan Cousineau

East Burt Lake Association

### James Ehinger

Site Planning Development, Inc.

### Roger Faber

Kimberly E. Contag

### Randy Hayes

Mary Hayes

### Jack Heckenberg

Mrs. Mary Driggs

### Robert and Eunice Hendrix

Scott and Anne Fitzgerald

### Charles Letts

Thomas and Sarah Post

### Seberon "Boo" Litzenburger

Jim and Kathy Bricker

Paul and Meg Brown

Perry and Karen Clark

Dave Kring Chevrolet Cadillac

Drs. William and Jane Millar

Mr. and Mrs. James J. Murray

Laura M. Standen

Mr. and Mrs. Byron L. West

Nick and Betsy White

### Patricia Lowry

Leslie and Barry Teague

### Jennifer E. Mann

Mrs. Carol C. Bitting

### Tucker Morse

Mrs. Mary Driggs

### Dan and Jeanne Newby

Mildred and John Spalding

### Judy Newton

Mr. and Mrs. Richard P. Bruening

Kelley Newton

Mr. and Mrs. Thomas C. Peterson

### Jay and Clem O'Neil

Jim and Kathy Bricker

### Web Otis

Mr. and Mrs. Thomas C. Peterson

Mrs. Walter L. Ross, II

### Ceil Pretty

East Burt Lake Association

### Frazier Reams

Mrs. Mary Driggs

### Date Renton

Rob and Ann Bassett

### Don Shely

Mr. and Mrs. Harry Atkins, Jr.

Melissa and Elliot Chaikof

Colonial Weque Condo Owners  
Association

Mark Harrison

Klepadlo Winnell Nuorala P.C.

Mr. and Mrs. Eric Peterson

### Seymour Soverinsky

Lois and Max Kraus

### Jan Werner

Leslie and Kevin Lloyd



## WELCOME, Ada Rain!

Congratulations to the Hughes-Graham family on their new baby! LTC's Membership Coordinator Emily Hughes, her husband and LTC's Special Projects staff member, Joe Graham, and their first daughter, Ember, welcomed Ada Rain Graham into the world on July 9, 2020.

The happy and healthy family is pictured here at the Tanton Family Working Forest Reserve after a family mountain biking adventure this fall.





## The Viewlands at Crooked Tree Art Center

Since the Offield Family Viewlands Working Forest Reserve was purchased by the Conservancy last April, northern Michigan photographer Raymond Gaynor has been documenting the land and its changes through the seasons. Many of his images have been featured in Conservancy publications and on social media. "As an artist, I wanted to capture the beauty of the Viewlands' vistas from a creative and unique perspective," Gaynor said. "I hope that the viewer experiences the same level of excitement that I feel every time I hike this new preserve!"

Crooked Tree Arts Center (CTAC) in Petoskey is exploring "Preserving and Conserving" in upcoming exhibits that will run January 18 - April 3, 2021. One of the exhibits, "A Land's Conservancy: Reclaiming Nature," will be a solo show by Gaynor featuring the Viewlands. On Friday, January 22, CTAC will host a Coffee @ Ten lecture with Gaynor as he discusses his photography and the year-long project. For more information about the exhibition and congruent programming, contact Crooked Tree Arts Center at 231.347.4337 or visit [crookedtreetree.org](http://crookedtreetree.org).

All photos pictured here are by Raymond Gaynor.





# Welcome New Board Members!

LTC's current Board of Trustees consists of 36 members, with an additional 20 non-board members serving on various committees. We are so grateful to all of these individuals who volunteer their time to help us accomplish our mission!



**Lisa Blanchard**

*Petoskey*

"I welcomed the opportunity to serve on the LTC board because I have supported the mission for decades. I believe in land stewardship and preservation, I use the LTC trails, I advocate getting more kids outside, and I have deep respect for the incredibly talented LTC staff."

**John Merrill**

*Good Hart / Columbus, Ohio*

*College Administrator, Dept. of Engineering Education, Ohio State University (Retired)*

"I was inspired to serve as a board member for LTC for two primary reasons: 1) a desire to be directly involved in conservation activities and education in Northern Michigan; 2) the commitment, energy and enthusiasm of the LTC staff."

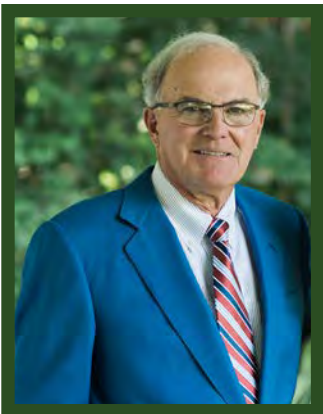


**Stuart Bishop**

*Harbor Springs / Columbus, Ohio*

*Health care service agency (Retired)*

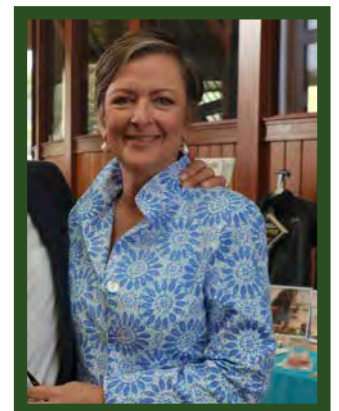
"I have been a member of LTC's Investment Committee since 2015 after encouragement from Dave Irish to become involved with LTC. I worry about this area because there are so many more people than there used to be. I try to do my part and preserve what we can preserve."



**Meg Sprow**

*Harbor Springs/ Naples, Florida*

Meg has been an LTC member for 15 years. She and her husband Jim are very active, and enjoy all that LTC has to offer in northern Michigan – especially hiking, boating and kayaking. Meg looks forward to encouraging others to explore the North Country we love and to help LTC protect what makes it so special.







Richard M. Bolton

*Good Hart*

*Corporate attorney specializing in private equity and mergers and acquisitions*

"I was inspired to join the LTC board because I have a passion for the mission, a desire to preserve the northern Michigan we all love and appreciate, and I want to give back to the community."



Josh Baker

*Harbor Springs*

*Owner of The Outfitter in Harbor Springs*

"We have been visiting LTC lands since we moved back to town 14 years ago. My dad, John Baker, has been involved with LTC for quite a while in various positions, and my wife, Molly, is a past board member. We are so lucky to have an organization of this caliber in northern Michigan. It is an honor to be part of a group working hard for what our family believes is worthwhile."

# LTC Online Storefront UP AND RUNNING!

Show the love for the North Country with a new LTC hat or hoodie! Call our office at 231.347.0991 or use our brand new online storefront to place your order: [www.landtrust.org/store](http://www.landtrust.org/store).

Shipping and curbside pick-up options available.







# Winter Events

These events are offered at no charge, but pre-registration is required by calling 231.347.0991 or online at [www.landtrust.org/events](http://www.landtrust.org/events). Note: Events are subject to change due to potential restrictions.

## Greenwood Foundation Winter Adventure

*Saturday, January 23 / 10am - Noon*

*Riverview Cabin, Webb Road (five miles east of I-75 overpass in Wolverine)*

The Greenwood Foundation is a privately-owned property near Wolverine protected with a conservation easement held by LTC. Greenwood welcomes the public on this day to enjoy and explore this rolling and remote property. A groomed trail for XC skiers will offer the chance to find respite in the beauty of a winter wildlife haven. A shorter route around MacAndrews Lake is available for snowshoers. Please provide your own skis or snowshoes, and social distancing measures will be practiced and enforced. Dogs are not allowed. Please try to arrive at least 20 minutes early.

## Snowshoe by the Waxing Moon

*Saturday, January 23 / 5:30 - 7:00pm*

*Offield Family Viewlands*

Join Star Lore Historian Mary Stewart Adams for a snowshoe hike by the light of the waxing gibbous Moon as it meets the star Aldebaran, the Bull's Eye in the constellation Taurus the Bull. This gathering will occur as Mercury creeps as far west of the Sun as it can get, and Mars stands guard over the night, while the Moon waxes toward its Full Wolf phase, encouraging us all to be resolute with regard to the New Year! The hike will be followed by guidance around the night sky and celestial highlights of the year ahead. Arrive earlier to catch the sunset!

## Snowshoe Lantern Walk

*Saturday, January 30 / 6:00 - 7:30pm*

*William B. Derby Nature Preserve, Cedarville*

Join the Conservancy as we partner with Bird's Eye Outfitters, Hessel Schoolhouse, and the Les Cheneaux Club to offer this cabin fever relief outing. The William B. Derby Nature Preserve will be a magical fairyland by lantern light. Bring your own snowshoes, or rentals are available through Bird's Eye Outfitters by calling their store at 906.259.7121.

## Winter's Cross Quarter and the Season of Candlemas – A Virtual Storytelling Event

*Saturday, February 6 / 7:00 - 8:30pm*

Halfway through each season we come to its "cross quarter," a dynamic moment when we turn away from the promise of new beginnings towards fulfillment. In winter, the cross quarter happens at the beginning of February as Orion marches through the sky with his dogs. Various known as Groundhog's Day, Candlemas, and St. Brigid's Day, the Winter's Cross Quarter festivals are a celebration of sustaining the inner light as the days are growing longer through the remaining weeks of the season.

Star Lore Historian Mary Stewart Adams will share insights into the celestial picture behind this month's festival season, and how it can inform the mood of the year. As always, the program will include information about finding your way through the sky in this season. A Zoom link will be sent to all registrants by the morning of the program.

## "When you go owling, you have to be quiet."

*Sunday, March 28 / 7:30 - 9:30pm*

*Thumb Lake Conservation Easement, Charlevoix County*

The book, *Owl Moon*, by Jan Yolen and John Schoenherr, describes a young girl and her Pa's still-winter-night walk in the woods. The story is as enchanting as being in the middle of the woods on a moonlit winter night. We will embark on our own quiet walk under a full moon to embrace the wild, the cold, the silence, and the lessons the northwoods winter has to offer. If this resonates with you, if you want to walk into the woods at night, in shared silence, in hunt of an owl sighting, with a purpose to listen intently, plan to join LTC Stewardship Director Derek Shiels at the far northwest corner of Thumb Lake where the road ends. Contact Conservancy for map and directions. Must be able to travel on uneven terrain, off trail, with limited light, and be exposed to the cold for up to two hours. Limited to 10 participants.





This fall, we asked you via social media to describe LTC preserves and reserves in one word. Your beautiful and thoughtful responses are below. Wishing you these words and more this holiday season and always.



*\*Size denotes repetition.*





Little Traverse Conservancy  
3264 Powell Road  
Harbor Springs, MI 49740  
[www.landtrust.org](http://www.landtrust.org)  
*Address Service Requested*

Non-profit Org.  
U.S. POSTAGE PAID  
Petoskey, MI  
Permit No. 110

## *The Power of Planned Giving*

By making a legacy gift to the Little Traverse Conservancy you will have an important role and lasting impact on the protection of our region's woods, shorelines, and wildlife habitats. You and your heirs may also receive significant tax and financial benefits. No matter your income level, planned giving offers you a way to support what you care about in life – and helps the Conservancy protect the North Country we all love.

There are many ways to leave a legacy gift to the Conservancy. For more information about planned giving please contact Ty Ratliff, Associate Director, at 231.344.1005 or [tyratliff@landtrust.org](mailto:tyratliff@landtrust.org).

