

7

Ray Johnston

53-acre preserve with over one mile of trail near Pickere Lake. Public boat launch and beach are nearby.
9600 Artesian Lane, Petoskey
From the intersection of M-119 and US-31 on the north end of Petoskey, follow US-31 ½ mile to Pickere Lake Rd. Turn right and follow Pickere Lake Rd. for approximately 7½ miles (the road has several confusing turns at intersections, so watch the road signs). Turn left on Ellsworth Road, go about one mile, and turn left on Artesian Lane. Look for parking area and preserve sign on left.

15

Stutsmanville Bog/ C. Beach Day & Family

Features a quarter mile fern-lined trail to the bog and a bench with an overlook view. The original preserve is 65 acres and the C. Beach Day & Family Preserve is 34 acres.
3465 S. State Road, Harbor Springs
From Harbor Springs, take State Road north approximately five miles. Look for the preserve sign on the right-hand side of the road and a small parking area.

23

Barney's Lake Beaver Island

A gorgeous 337-acre preserve with frontage on Barney's Lake and Lake Michigan. A mile of trail is east of Barney's Lake. A second trail is at the north off of Barney's Lake Road. **Open to waterfowl hunting only.**
35795 Barney's Lake Rd. S. Beaver Island
From St. James, take Kings Hwy. south 1¼ miles to Barney's Lake Rd. North and turn right. Go 2½ miles and the preserve can be found on both sides of the road. Look for a preserve sign and parking on the left.

31

Raven Ridge

140 acres and 1½ miles of hilly trails adjacent to the Raven Hill Discovery Center near East Jordan.
3658 Rogers Road, East Jordan
From Boyne Falls, take M-75 for one mile to Deer Lake Road. Turn left on Deer Lake Road and travel 3½ miles to East Jordan/Boyne City Road. Turn left and go 4 miles and turn left on Pearsall Road. Within 50 feet, turn left on Fuller Road. Go up the big hill past Raven Hill Discovery Center until you reach a "T." Turn left (Rogers Rd. but no sign). The parking area is a short distance down on the right.

39

Boyd B. Banwell

400 acres and three miles of Pigeon River shore, this is home to LTC's original nature megaphone. Nearly seven miles of trails exist between here, the adjacent Andreae Preserve, and the Bishop Reserve. **Hunting is allowed here but not at the Andreae Preserve.**
1126 M-68 Highway, Afton
From Indian River (exit 310 off I-75) take M-68 east about 5.3 miles. Look for parking area and sign on the left.

47

VanCampen Preserves

Both preserves are popular fishing destinations along the Pigeon River.
Vivian VanCampen: 56 acres and 3,500 feet along the Pigeon River.
6270 Haz Drive, Afton
Helmer's Dam/Robert D. Campen: 200 acres and 1 mile Pigeon River
7417 Afton Road, Afton
Vivian VanCampen: From Indian River, head southeast on M-68 for 5½ miles. Turn right on Afton Road and travel .8 mile to Haz Drive. Take right and go .6 mile to parking. Trail is west of road.
Helmer's Dam: From M-68/Afton Rd. turnoff, travel 1.3 miles to the preserve on left.

8

Seberon "Boo" Litzenburger

North of Harbor Springs, these 40 acres offer a beautiful one-mile looped trail with an overlook and path along Five Mile Creek. This preserve is part of a much larger preserve complex, but marked trails are only found at this preserve at this time.
5285 Five Mile Creek Rd., Harbor Springs
From Harbor Springs, travel north on M-119 approximately six miles and turn right on Five Mile Creek Road (first right, after Pond Hill Farm). Preserve parking is a quarter mile ahead on your right.

16

Tanton Family

A hilly 236-acre working forest reserve. More than seven miles of professionally-designed trail exist for bikers and hikers with increasingly challenging options. A partner project with Top of Michigan Mountain Bike Association. Located across the road from the McCune Preserve (see #9).
1447 Maxwell Road, Petoskey
From Petoskey, take Mitchell Road east approximately 7 miles. Turn south (right) onto Maxwell Road. Drive south just over ¼ mile and the new parking area is on the left (east) side of Maxwell Road.

24

Nathan Beem Memorial

With 105 acres and 1,880 feet of shoreline on the east side of Six Mile Lake, this preserve protects natural wetlands and uplands. A ½ mile trail loop takes you through beautiful meadow and pine forest. Look for the bat condominium on the northeast part of the preserve off of the trail.
4285 Miles Road, East Jordan
From the village of Ellsworth, take the East Jordan/Ellsworth Road 2.7 miles east and head right on Miles Road. Travel approximately 1.3 miles to the parking area on your right.

32

Rogers/Dressel/ Jordan River Complex

These preserves combine for a total of 201 acres and more than two miles of Jordan River frontage. An easy 1½ mile trail is found on the Rogers Family Homestead Preserve. By summer 2024, this trail will connect with a new boardwalk trail that connects to Sportsmans Park.
Two parking areas: 501 Echo St. OR 7944 Rogers Road, East Jordan
From downtown East Jordan, travel northeast and then east on M-32 for 1.3 miles to Rogers Road. Turn right and the Rogers Preserve is ½ mile down on the right.

40

L. John and Helen Bishop

360 acres and 7,500 feet along the Little Pigeon River. Two miles of trails connect to the Banwell Preserve and the Andreae Preserve, a protected complex of more than 800 acres. **Hunting is NOT allowed here.**
1093 W. Ostrander Road, Afton
From Indian River, travel 6 miles east on M-68 to Quarry Road, a dirt road. Turn left (north) and travel for two miles to W. Ostrander Road. Turn left (west) and parking area will be .2 mile down on the left (south) side of the road.

48

Birge/Mertaugh/Nye Wallace Complex

This 889-acre complex features beautiful wildflowers, excellent migratory bird habitat, and near the three miles of Lake Huron shore. There are three parking areas and three trails: Most northern trail is two miles, Loon Lake trail is a quarter mile, and the Search Bay trail loop is roughly .6 mile to the lakeshore.
7708 Pt. Brulee Rd., Hessel (main parking)
From Hessel, take M-134 west 2.4 miles. Turn left on Pt. Brulee Rd. and drive .7 mile to the first parking on right, or go 1.1 mile to shoreline parking on left. The Loon Lake platform is between these, and the Mertaugh/Search Bay trail parking is .5 mile further south with signs directing you to the trailhead.

9

Allan and Virginia McCune

172 acres with 3 miles of trail and more than ½ mile frontage on Minnehaha Creek. Located across the road from the Tanton Family Reserve (see #16).
1565 Berger Road OR seasonal parking at 1790 Maxwell Road, Petoskey
From Petoskey, take Mitchell Road east 6.25 miles to Berger Road, turn right and go .7 mile to parking on left.

17

Thorne Swift

On these 30 acres you will find a nature center and three easy trails to a pond and Lake Michigan beach. Open Memorial Day to Labor Day, 10 am to ½ hour after sunset. Call 231.526.6401 for extended hours. Managed by West Traverse Township. **Dogs are not allowed.** (Parking fee but no charge for LTC members and Township residents.)
6696 Lower Shore Dr., Harbor Springs
From Harbor Springs, take M-119 northwest 3.8 miles to Lower Shore Dr. on left. Follow Lower Shore Dr. for ½ mile. The preserve sign is on the left.

25

Darnton Family

Located between Boyne City and East Jordan, this 275-acre preserve includes 2.2 miles of trail through rolling terrain and varied habitats.
4251 Behling Road, Boyne City
From Front Street in Boyne City, head southwest out of town following the lake until it becomes Marshall Road. Follow .3 mile and take a left on Anderson Road. In 2½ miles, take a right on Behling Road. Follow Behling .8 mile to the parking area on the right.

33

St. Clair Lake/ Six Mile Lake

Jointly owned between the Grand Traverse Regional Land Conservancy and LTC, these 261 acres protect 2.3 miles of water frontage and a short loop half mile trail. The trail and kayak launch are universally accessible.
11800 Ellsworth Road, Ellsworth
In Ellsworth, take C-48 east approximately two miles to the preserve parking area on the right (south) side of the road.

41

LTC/UNIVERSITY OF MICHIGAN Chaboiganing/Indian Point

482 acres and 2½ miles of easy trails combined. **Hunting is allowed on Indian Point but not on Chaboiganing.** Parking also provides access to the paved Burt Lake Trail.
10251 Brutus Road, Brutus
From Petoskey, travel 14 miles north on US-31 and turn right on Brutus Rd. Travel 4 miles. Just past the intersection with Mundt Rd. look for the Chaboiganing Preserve entrance on right. Parking for the Indian Point property is another half mile beyond Chaboiganing on the right.

Hunting at Indian Point only

49

William B. Derby, Jr.

This 200-acre preserve includes a roughly 2½ mile figure-eight trail loop available through all seasons. Beautiful mossy rock gardens, evergreen forest, and the rugged Lake Huron shore are highlights. A local favorite, this preserve is found just outside of Cedarville.
1308 W. Club Road, Cedarville
From M-134, head south on Four Mile Road to Club Road. Take a right on Club Road and travel ½ mile. Look for signs on right and parking area is a little further up on the left. (Please no parking on Four Mile Road.)

10

Naas, Mauger, Raunecker and Leslie Complex

These adjacent preserves totaling 45 acres are found a few blocks west of downtown Harbor Springs. Less than a mile of trail total.
593 W. Fourth Street, Harbor Springs
From Main St. in downtown Harbor Springs, travel west past Holy Childhood Church until the road intersects on Traverse St. Take a right and travel 4 blocks to Fourth St. Turn left. The preserve entrance is about ¼ mile on the left at the turnaround.

18

Uh-ni-nah-tig Ziibing Joan and John Hutto

Over 40 acres and almost 3,000 feet of Maple River frontage. Excellent fishing access. Unmarked two-track trails meander the land.
2546 Pine Trail Rd., Brutus
From Brutus, head north on US-31 one mile to Maple River Road and turn right. In half a mile turn left on Pine Trail Road. This dirt road will dead end at the preserves where you can park. Stairs lead down to the river's edge.

26

Nathan "Barry" Driggers

A 1½ mile trail meanders these 75 acres offering views of Lake Charlevoix. Trails are sometimes groomed by a neighbor in winter.
8485 Boyne City Road, Charlevoix
From the intersection of US-31 just north of Charlevoix, head east on the Boyne City-Charlevoix Road and travel 5.3 miles. The preserve is found on the left (north) side of the road. This preserve is directly across the street from Hayes Township's Camp Seagull property.

34

Sleepy Hollow

More than one mile of easy trails are found at this 55-acre preserve. A spring-fed trout stream empties into the South Arm of Lake Charlevoix. Beautiful second growth forest of maple, beech, hemlock, and ash.
1125 Sleepy Hollow Lane, East Jordan
From Charlevoix, take M-66 south approximately 7 miles and turn left onto Sleepy Hollow Lane, across the road from Phelps Road. Drive in to the parking area on the left.

42

Duncan Bay

145-acres and 3,500 feet of Lake Huron make this preserve highly-important habitat for migratory waterfowl and other water-dependent species. An easy .9 mile trail loop leads to the lake where an overlook platform is found. This preserve lies along the Sunrise Coast Birding Trail and the City of Cheboygan's designated Bike Route.
829 Duncan Avenue, Cheboygan
From Cheboygan take US-23/State St. East to Duncan Avenue and turn left. Continue on Duncan Ave. .80 miles. The Duncan Bay parking and logo sign will be on your left.

50

Marquette Island Preserve Complex

2,030 acres and five miles of Lake Huron shoreline are protected with a complex of several preserves. (The Aldo Leopold Preserve is 1,683 acres alone.) Trail access is at the north end of the preserve on Liberty Road or at the Leopold Landing at Duck Bay.
From St. Ignace, follow I-75 north about 14 miles to M-134. Take M-134 east 13 miles to Hessel. Launch to the island from Hessel or further east in Cedarville. Quickest launch to Duck Bay is from the end of 4 Mile Rd./S. Park Ave. Only accessible by boat. Visit the Hessel Schoolhouse for maps.

11

Oden Island

A rare island of its size surrounded by an inland lake, Oden Island is accessed by a causeway. The 50 acres offer nearly a mile of trails.
3200 Leeward Drive, Petoskey
From Petoskey, take US-31 north 3¼ miles to Pickere Lake Rd. Turn right and follow 4 miles until Pickere turns into Channel Rd. Follow Channel Road one mile to Oden Island Road and turn left. Once on the island, turn right on Leeward Drive and go all the way to the end until you see the sign.

19

Waldron Fen

158-acres and a nearly two-mile trail loop offer exceptional birding and an easy walk. A small covered picnic table is near parking. Land is in the process of being restored to native species. **Dogs are not allowed.**
9417 Banwell Road, Alanson
From Petoskey, head north on US-31 to Pickere Lake Rd. Follow 9½ miles to Banwell Rd. and turn left. Continue on Banwell 3¼ miles to entrance on right. From Alanson, head east on M-68 to Banwell Rd. Turn right. Continue on Banwell 3.3 miles to entrance on left.

27

The Hill

This popular 119-acre property overlooks Boyne City with filtered views of Lake Charlevoix. A 2½ mile trail system meanders through mature hardwoods, old fields, orchards, and conifers. Groomed ski trails in winter.
1820 Clute Road, Boyne City
From downtown Boyne City at intersection of Lake and Water Streets, go north on Lake for one mile. Lake Street turns into W. Michigan. Go 0.1 mile on W. Michigan and turn right on Charlevoix Street. Go 1.6 miles north on Charlevoix to Clute Road. Turn right onto Clute. Go .7 mile to parking area on your right.

35

Susan Creek

314 acres and more than two miles of trails. The preserve includes a mile of frontage on Susan Creek and a mile along US-31. These trails merge with the land and trails of the 55-acre Taimi Hoag Natural Area owned by the Little Traverse Bay Bands of Odawa Indians.
10570 US-31 North, Charlevoix
Four miles east of Charlevoix and 11 miles west of Petoskey, the entrance to this preserve is across from the Little Traverse Wheelway, close to the Big Rock Restoration Site along US-31.

43

Hildner-Bearce/Waubun/ Davis Complex

These combined 46 wooded acres are dominated by oak, maple, and beech. The preserves offer a mile of trail in total.
1007 Chippewa Beach Rd., Indian River
From Indian River, go north on S. Straits Highway (M-27). Cross the bridge and take the first left onto Prospect Street which becomes Chippewa Beach Road. Drive 3 miles and the Hildner-Bearce Preserve logo sign and one-car parking area will be on the left. Trailheads can be found on both sides of the road.

51

De Tour Peninsula

More than three miles of northern Lake Huron shoreline and 145 acres on Point DeTour. From the parking area, a two-track trail leads through the middle of the preserve with short trails to the lake. *Please be respectful of private property.*
2331 Point St., Detour Village
From the Mackinac Bridge take I-75 north. Take exit 359 to M-134 East toward Cedarville. Go through Cedarville, and continue east passing De Tour State Park. From the campground entrance, continue 5 miles. (Town of De Tour is too far.) Turn right onto Pointe St. and continue to bear right to parking area.

12

Offield Family

At 390 acres, this reserve includes nearly four miles of trails and two parking areas a short distance from Harbor Springs, the ski resorts, and several golf courses.
Two parking options: 515 Quick Road OR 7425 Hedrick Road, Harbor Springs
From Petoskey, head north on US-31 2.6 miles to M-119. Turn left, follow M-119 for 3.2 miles to Pleasantview Rd. Continue north on Pleasantview 1½ miles to Quick Rd. and turn left. Look for parking area on left ½ mile down Quick Rd. Parking also off Hedrick Rd.

20

Watson and Schott Complex

These adjacent preserves between Petoskey and Harbor Springs total 110 acres. A one-mile trail loop spans both preserves.
9005 Mink Road, Harbor Springs
From the Harbor Springs Airport, head southeast along M-119 roughly a half mile. Head east on Woodview Road and travel a half mile. Take a right (south) on Mink Road and you will dead end at the parking area to the trail.

28

Elizabeth B. Hoffmann DeNardis Family

With 212 acres, this complex offers more than three miles of trail directly off of US-31 south of Pleasantview. Nearly a half mile of Inwood Creek flows through both preserves. The Bier Art Gallery and Bier's Inwood Brewery are next door.
Two parking options: 17596 Vratanina Road OR 3660 US-31 South, Charlevoix
From the light at the intersection of M-66 and US-31 at the south end of Charlevoix, travel .5.5 miles and take a left on Vratanina Road for one parking area. Another parking area is directly off of US-31 just north of the gallery.

36

Taylor/Horton Creek/ Schulz Complex

Six nature preserves along Horton Creek combine for 325 acres and 2.25 miles of stream frontage, and almost three miles of trails. A parking area is available along Pincerhy Road. The Schulz property is a working forest reserve.
7030 Pincerhy Rd., Charlevoix
From Charlevoix, take US-31 east two miles and turn right on the Boyne City-Charlevoix Road. Go 8.6 miles and turn left on Pincerhy Road. Go north 2.1 miles on Pincerhy Road. The parking area is on the right.

44

Barbara C. Hoffius

A 600-acre preserve with 2,000 feet of Lake Huron straddling the North Central State Trail. A short trail meanders to the lakeshore and a ¾-mile trail loop is found off the NCST in the upland part of the preserve.
4784 W. US-23 Hwy., Cheboygan
From the intersection of US-27 and US-23 in Cheboygan, head northeast on US-23 for 7.3 miles and look for the preserve sign on the right. From Mackinaw City, the preserve can also be found just under 8 miles southeast of town along US-23.

52

Round Island Point

1,026 acres, 1¾ miles along Lake Superior, and 1½ miles of inland trail does not currently go to the shore). There are two entrances, but directions below are to main parking.
6731 West Winding Ridge Rd., Brimley
From Sault Ste. Marie, head south on I-75 and take Exit 392. Travel about one mile and turn left (south) on 20th Street (aka S. Bakerside Road) and travel three miles. Turn right on 6 Mile Rd. Go five miles and turn right (north) on Birch Point Rd. (east loop). Go ½ mile and look for signs on right. Turn right onto the paved S. Winding Ct. Follow one mile to parking and trailhead.

13

Offield Family Viewlands

Formerly a golf course, these 280 acres have 4.5 miles of trails with views of Little Traverse Bay and the Inland Waterway. Features: Barrier free Reflection Labyrinth and Fishing Pond. Mountain Bike Trail coming in 2024.
995 Hideaway Valley Dr. Harbor Springs
From M-119/West Conway Road intersection across near the Harbor Springs Airport, head east on West Conway Road. Take the next left onto Clayton Road. Continue on Clayton past Hathaway Road. Take a right on Hideaway Valley Drive. The preserve is shortly on your left.

21

Consuelo Diane and Charles L. Wilson Jr.

A few miles north of Harbor Springs, this 248-acre working forest reserve includes 2½ miles of scenic trail. Volunteers and staff have planted thousands of trees to regenerate part of the land to forest.
4469 Middle Road, Harbor Springs
From the intersection of Lake Street and State Road north of downtown Harbor Springs, travel two miles north on State to Middle Road. Take a left on Middle and go roughly 2.8 miles to the preserve sign and parking on the left.

29

Little Sand Bay Beaver Island

116-acres with a short trail (.4 mile) to a beautiful beach. When added with state land to the north, nearly 1½ miles of Lake Michigan shoreline are protected. A good place for night sky viewing.
36010 East Side Dr., Beaver Island
From the Welke's Airport, go south on East Side Drive for approximately 200 yards. Look for a sign on the left side of the road. Parking is adjacent to the historic Gallagher House.

37

Wisser-Saworski

Just south of Boyne Falls, this 36-acre preserve includes 1½ miles of trails. The preserve is adjacent to the school's 160-acre forest. An overlook platform exists at the preserve's highest point, looking over Boyne Valley.
3335 Metros Road, Boyne Falls
From the light at the US-131 intersection in Boyne Falls, continue 1½ miles south along US-131. Turn left onto Metros Rd. Cross the railroad tracks and parking area is on left.

45

Melvin Family Hiking and Biking Trails

Opening in Spring 2024. With 150 acres of mostly forested, hilly terrain, this reserve offers seven miles of designed mountain bike trails that are also open for hiking. **Open for bow hunting only.**
3151 Bennett Road, Topinabee
From Indian River, head north on S. Straits Hwy for 2.8 miles, continue north on M-27N for 2.5 miles, turn left onto Bennett Rd and continue for 1.4 miles. Watch for the reserve entrance on your right.

53

Vermilion Point

Enjoy 1¾ miles of Lake Superior shoreline at this spectacular 175-acre preserve. The main building is used by researchers and the 1876 historic life saving station is being restored by the group S.O.S. Vermilion. Seasonal road. **No dogs allowed May-August 15 to protect piping plovers.**
17532 N. Vermilion Road, Paradise
From Paradise, travel north on N. Whitefish Rd. 5.2 miles. Turn left at Vermilion Rd. In .6 mile, be sure to stay slightly to the right on Vermilion Rd. and continue on steepest road for 6.1 miles. Again, stay straight for 1.3 miles until you reach the preserve.

14

Round Lake

Next to the Conservancy office are 58 acres with a mile of easy trail and a half mile on Round Lake. Easily accessible from Little Traverse Wheelway and Petoskey State Park.
3264 Powell Road. Harbor Springs
From US-31 in Petoskey, take M-119 1½ miles north to Powell Rd. Turn right on Powell and take the first driveway on the right, also the entrance to the LTC office. The trailhead is directly off of the parking area.

22

Woollam Family

A spectacular 69-acre Lake Michigan shoreline preserve. A hilly half-mile trail leads to the beach. This preserve lies along the Sunset Coast Birding Trail. **Dogs are not allowed.**
5581 N. Lakeshore Dr., Harbor Springs
From Harbor Springs, travel north on Lakeshore Drive (M-119) for 18.7 miles. Look for parking and sign on the left (west). From Cross Village head south on Lakeshore Drive roughly 1.7 miles and look for sign and parking on the right. Alternate routes can be taken via Google search.

30

Charles A. Ransom/ Robert L. Bytwerk

The 1½ mile trail at the Ransom portion of this 240-acre complex includes steep hills with views of Lake Michigan, Lake Charlevoix, and nearby islands. Bytwerk is open to hunting. A nature megaphone is found on the Bytwerk Reserve.
8065 Grange Road, Charlevoix
From Petoskey, take US-31 south approximately 9 miles to Burgess Road and turn left. Go 3½ miles to Quarterline Road and turn left. Then go 1 mile to Maple Grove Road and turn left. Go ¾ mile down Maple Grove and park at the road end.

Hunting at Bytwerk only

38

Agnes S. Andreae

81-acres along the lower Pigeon River. A rustic cabin is available for use by community groups. Nearly seven miles of trails exist between Andreae and the adjacent Banwell Preserve and Bishop Reserve. **Hunting is NOT allowed here.**
4569 Big Sky Trail, Indian River
From Indian River (exit 310 off I-75) take M-68 east 4½ miles. Turn left onto Old Onaway Rd. (Look for "Cochrane Lake Public Access" sign). Go north on Old Onaway Rd. 1.7 miles to Riverwood Rd. and turn right. At the T intersection with Big Sky Trail, look for preserve sign.

46

Seven Springs

A few miles outside of Indian River, this 66-acre preserve offers 1.2 miles of trail, including a shoreline overlook of Burt Lake. 2,800 feet of rocky and shallow lake frontage are protected.
2787 Chippewa Beach Rd., Indian River
From Hwy. M-27/75 in Indian River, turn west onto Prospect Rd. just north of the bridge. Continue straight onto Chippewa Beach Rd. which curves north and go roughly 1.1 miles. Look for preserve sign about ¼ mile past the curve on the left.

54

Clyde and Martha Williams

The Conservancy's first preserve on Drummond Island, these 80 acres include an easy 1.3 mile trail system. Points of interest include several forest types and evidence of glacial action. A designated stop along the North Huron Birding Trail.
30277 E. Maxton Rd., Drummond Island
From Detour, take the ferry to Drummond Island. Drive onto M-134/ East Channel road for 7.9 miles. Turn left at town Townline Rd. Travel 1.5 miles to Drummond Rd./East Maxton Rd. Turn right and go ½ mile to the preserve on the left.

KEY

All trails featured on this map are suitable for hiking, birdwatching, and similar activities. Parking is available with either a formal parking area or a safe pull off. The following icons highlight activities suited for each property.

Bicycling

Canoeing or Kayaking opportunity

Fishing

Horseback riding

Hunting - by written permission only. Visit www.landtrust.org for details and registration.

Located on an official Birding Trail

Trails are often groomed for skiing and snowshoeing

Swimming opportunity

Dogs not allowed

State law requires that all dogs be on a leash while visiting LTC properties.

Emmet County

Charlevoix County

Cheboygan County

Mackinac County

Chippewa County

photo below: Woollam Family Nature Preserve

LITTLE TRAVERSE CONSERVANCY'S Featured Trails

PROTECTING THE NORTH COUNTRY WE ALL LOVE



Featured Trails

ON LANDS PROTECTED BY
LITTLE TRAVERSE CONSERVANCY



0 5 10 15 20 Miles

Visit

www.landtrust.org

or call 231.347.0991
for more detailed
information and maps.

Guidelines

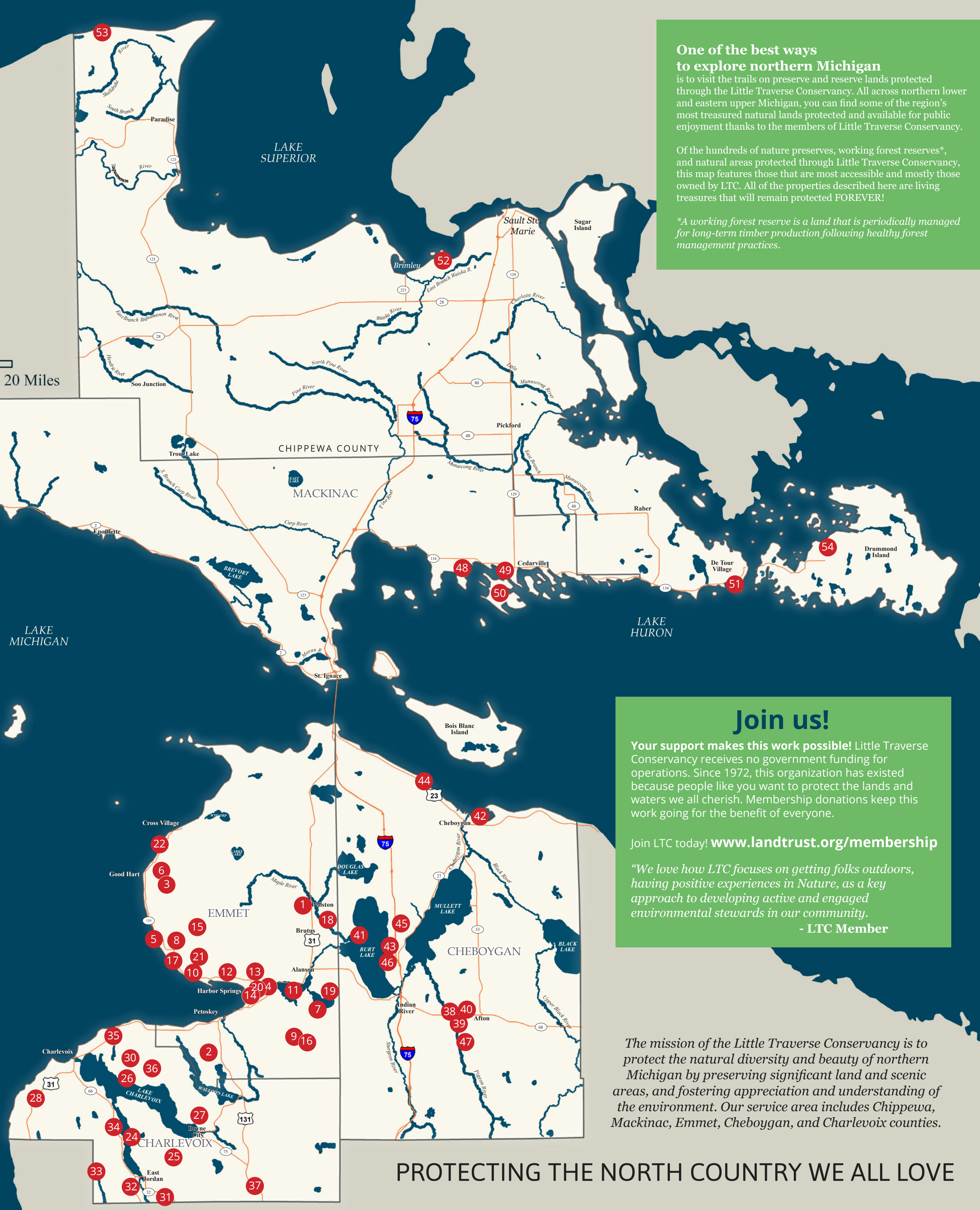
Please enjoy: Hiking, birdwatching, cross-country skiing, snowshoeing, fishing, and similar low-impact activities. Many of the properties include water frontage but none of these properties include developed boat launches.

Please refrain from: Camping, fires, dumping or littering, removal of vegetation, off-road vehicles, and snowmobiling.

Please remember:
• Hunting is allowed only on designated preserves and with written permission only.
Visit www.landtrust.org or call our office for details.
• **State law requires that all dogs be on a leash while visiting LTC properties.**

Please contact our office if trails, parking areas, or signs need attention or if you notice any inappropriate activity on a preserve. We greatly appreciate the assistance of the many individuals who help monitor and provide stewardship for our preserves and trails. Visit our website for volunteer opportunities!

15th Edition, January 2024



One of the best ways to explore northern Michigan

is to visit the trails on preserve and reserve lands protected through the Little Traverse Conservancy. All across northern lower and eastern upper Michigan, you can find some of the region's most treasured natural lands protected and available for public enjoyment thanks to the members of Little Traverse Conservancy.

Of the hundreds of nature preserves, working forest reserves*, and natural areas protected through Little Traverse Conservancy, this map features those that are most accessible and mostly those owned by LTC. All of the properties described here are living treasures that will remain protected FOREVER!

**A working forest reserve is a land that is periodically managed for long-term timber production following healthy forest management practices.*

Join us!

Your support makes this work possible! Little Traverse Conservancy receives no government funding for operations. Since 1972, this organization has existed because people like you want to protect the lands and waters we all cherish. Membership donations keep this work going for the benefit of everyone.

Join LTC today! www.landtrust.org/membership

"We love how LTC focuses on getting folks outdoors, having positive experiences in Nature, as a key approach to developing active and engaged environmental stewards in our community."

- LTC Member

The mission of the Little Traverse Conservancy is to protect the natural diversity and beauty of northern Michigan by preserving significant land and scenic areas, and fostering appreciation and understanding of the environment. Our service area includes Chippewa, Mackinac, Emmet, Cheboygan, and Charlevoix counties.

PROTECTING THE NORTH COUNTRY WE ALL LOVE

1 Philip J. Braun North

A short walk from Pellston, this 125-acre preserve protects almost a mile of the Maple River, a fly-fishing destination. A short trail takes you to the river.

5640 E. Robinson Rd., Pellston

From US-31 and Robinson Rd. head west ¼ mile on Robinson Road. Preserve entrance is on the south side.

NOTE: Braun South Preserve lies just south of Pellston and offers 32 acres and 1,500 feet of Maple River frontage. However, there are no established trails there.



2 Bubbling Springs/Robinson Gold Star Family

Just outside of Petoskey, this 20-acre preserve complex includes a short trail and overlook. While enjoying a mix of mature upland hardwood forest and a swamy corridor with a small stream, try to find the springs. The five-acre Robinson Family Preserve Honoring Gold Star Families was created to honor local Navy Seal Heath Robinson and all who have lost a loved one in military service.

2381 Intertown Road, Petoskey

From the intersection of US-31 and US-131 in Petoskey, travel south on US-131 1½ miles to Intertown Rd. Turn right (west) on Intertown and travel 1.1 miles to the preserve on the left side of the road.

3 Goodhart Farms

Close to Good Hart, this is one of LTC's largest preserves at 696 acres. You will find 7½ miles of trails with 5½ miles groomed for cross-country skiing. Trails are divided into East and West sections with four parking areas (only Robinson Road parking is plowed in the winter).

7251 W. Robinson Road, Harbor Springs

From Harbor Springs, take State Road north nine miles to Robinson Road. Turn left and travel 3½ miles to parking on the left (south). East trails are most easily accessed from here. Continue on Robinson 1.7 miles to Church Road and turn left. Parking for West trails is in .4 mile on right.



4 Hailand/Helstrom Family Complex

The 50-acre Hailand Preserve is adjacent to the 40-acre Helstrom Family Preserve combining for 1½ miles of trail. Access is also off of the Northwestern State Trail. A designated stop along the Sunset Coast Birding Trail.

4855 W. Conway Road, Harbor Springs

At the Conway light along US-31, turn left onto West Conway Road and in .2 mile you will see sign and parking on the right. OR catch the paved North Western State Trail at the fountain and go north about a hundred yards to access the preserves from the boardwalk/bike rack.



5 Hoogland Family

This 74-acre preserve along 3,000 feet of M-119/Trunk of Trees Scenic Heritage Route includes a 1½ mile trail loop. With rolling ridges to the east, it includes classic northern upland forest. In late spring, the woods are dotted with trillium, trout lily, and spring beauty.

4135 S. Lakeshore Dr., Harbor Springs

From Harbor Springs, drive north on M-119 for 7.7 miles. At the base of the big hill you have just descended, you will turn a fairly sharp corner to the right and the parking area will soon appear on the right.



6 Elmer Johnston

Just down the road from Good Hart, old logging trails offer nearly two miles of hiking and spectacular views of Lake Michigan and Beaver Island from this 220-acre preserve. Portions of the land were once tilled as farmland and used as pasture. A mix of rolling hardwoods and open meadowland.

1500 Church Rd., Harbor Springs

From Harbor Springs, take State Road nine miles to Robinson Road. Turn left on Robinson and travel 4 miles to Church Road. Take a right on Church and travel ½ mile to the preserve parking on the right.

