



# WILD SHORES INITIATIVE

You can protect sensitive and scenic places around the Great Lakes

## PROTECT WHAT IS GREAT

Any strategy for protecting northern Michigan must include a plan to conserve Great Lakes shoreline. Our home has some of the most sensitive and beautiful places on the Great Lakes. This same beauty is what puts them at risk for development.

A new program of the Conservancy's, the Wild Shores Initiative aims to acquire large, natural shoreline properties, primarily in the Upper Peninsula and on many of the islands, where there are significant conservation opportunities at affordable prices. These lands are typically robust in conservation value and are essential areas for many species, including migratory birds.

This initiative will be the home to a revolving group of worthy shoreline projects.

## YOUR GIFT

By supporting the Wild Shores Initiative, your gift will go directly towards the protection and care of the four properties you see here and to seed the protection of future shoreline projects.

**PROJECT GOAL: \$1,500,000**

## SUPPORT THIS PROJECT

To learn more about this initiative or specific naming opportunities contact:

Emily Hughes, Chief Development Officer  
231.347.0991  
[emily@landtrust.org](mailto:emily@landtrust.org)

*Protecting the North Country We All Love*



## Addition to Existing Preserve: Whitefish Point Township, Lake Superior

(#1 on attached map)

- 110-acre addition to the 16.77 acre John J. Helstrom Nature Preserve at Shelldrake River
- 628 feet of shoreline on Lake Superior
- 1/2 mile of frontage on Shelldrake River
- 5 acre open water wetland

Appraised Value: \$945,000

Bargain Sale Price for LTC: \$860,000



---

**\$860,000 needed to purchase and  
protect this land by December 2025!**





# Addition to Traverse Point Nature Preserve, Drummond Island

(#2 on attached map)

- 67 acres
- Over 1,600 feet of shoreline on Lake Huron
- Adjacent to 100's of acres of state land and LTC preserves.
- Adding to LTC's recently acquired 111-acre Traverse Point Nature Preserve



---

**This land has officially been  
protected!**





## Jerry and Eileen Fhaner Nature Preserve

(#3 on attached map)

- 40 acres
- Over 1,300 feet of shoreline on the St. Mary's River with a unique shoreline cove and diverse habitat
- Adjacent to 100's of acres of state land and LTC preserves



---

**This land has officially been  
protected!**





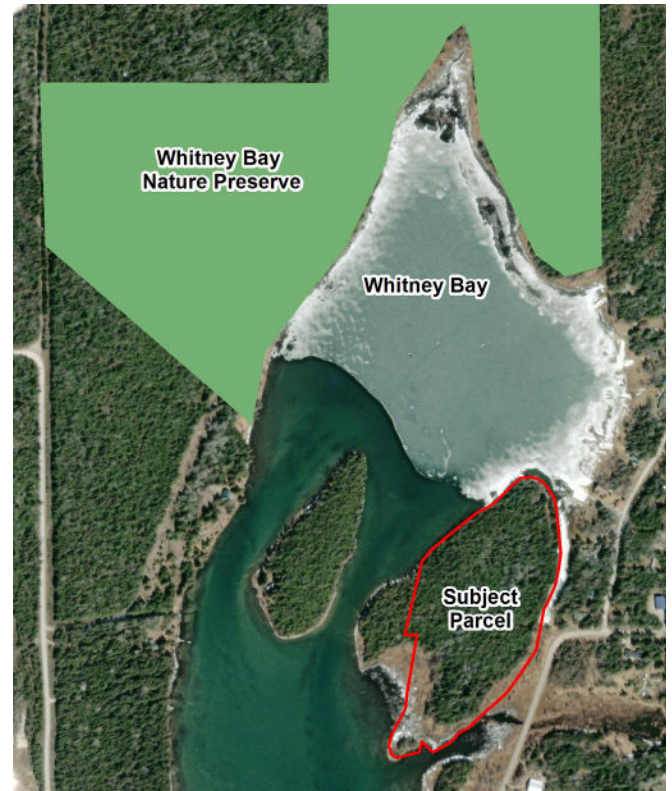
## Naming Opportunity: Botsford Island, Whitney Bay

(#4 on attached map)

- 11.05 acres on Botsford Island
- 2,331 feet of Lake Huron Whitney Bay frontage, a buffer to LTC's recently acquired 93 acre Whitney Bay Nature Preserve
- This is a barrier island to this peaceful bay on Drummond Island that is a key migration haven for birds.

---

**This land has officially been  
protected, you could name it with  
a gift of \$200,000.**

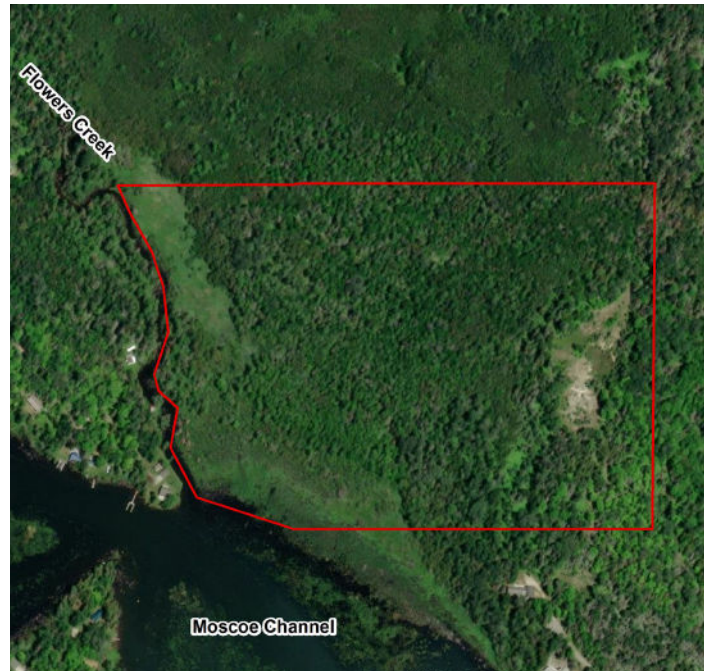




# Flowers Creek Nature Preserve Moscoe Channel

(#5 on attached map)

- 54 acres
- 1,250 feet of frontage on Lake Huron's Moscoe Channel, 1,200 feet of frontage on Flowers Creek
- Forests and coastal wetlands of this property make for a prominent scenic area in the Les Cheneaux Islands



---

**This land has officially been  
protected!**



## Legend

- LTC Protected Lands
- Wild Shores Projects
- Other Protected Lands

1. Addition to Shelldrake
2. Traverse Point
3. St. Mary's River
4. Botsford Island
5. Flowers Creek

